

Flight Procedures Cover Page	Task Action: FLIGHT CHECK	Task Type: IAP	Estimated Chart Date: 05/16/2024	APWS Task ID: 24BAC9B82B5B4916ABFA3DF51BC3B588	APWS Project ID: B6BBBD5DCF4FF4EB59DBE23652452A079
Procedure: ILS OR LOC RWY 36 AMDT 4		Enroute: NO	Specialist: Schones, Christopher		Agreement Number:
Airport ID: KAUO			Airport City: AUBURN		State: AL
Facility ID: AUO	Facility Type: ILS	Flight Inspection Remark Type: New FC Slot			
<div>Procedure Comments: ACTIVE AIRPORT AND RUNWAY DATA USED. PENDING NAVAID DATA FOR I-AUO USED. CONTACT: CASIMIR TABAKA (4005) 954-7931</div> <div>03/22/2024: THIS IS A CORRECTED COPY OF THE FORM APPROVED ON 02/22/2024. CHANGED BOTH PROCEDURE NA FOR ARRIVAL ON MGM VORTAC AND PROCEDURE NA FOR ARRIVAL LGC VORTAC NOTES FROM "CHART NOTE" TO "CHART PLANVIEW NOTE".</div>					

QUALITY
J ZEDER 03/22/2024 16
CHECKED

QUALITY
33
CHECKED

QUALITY
19
CHECKED

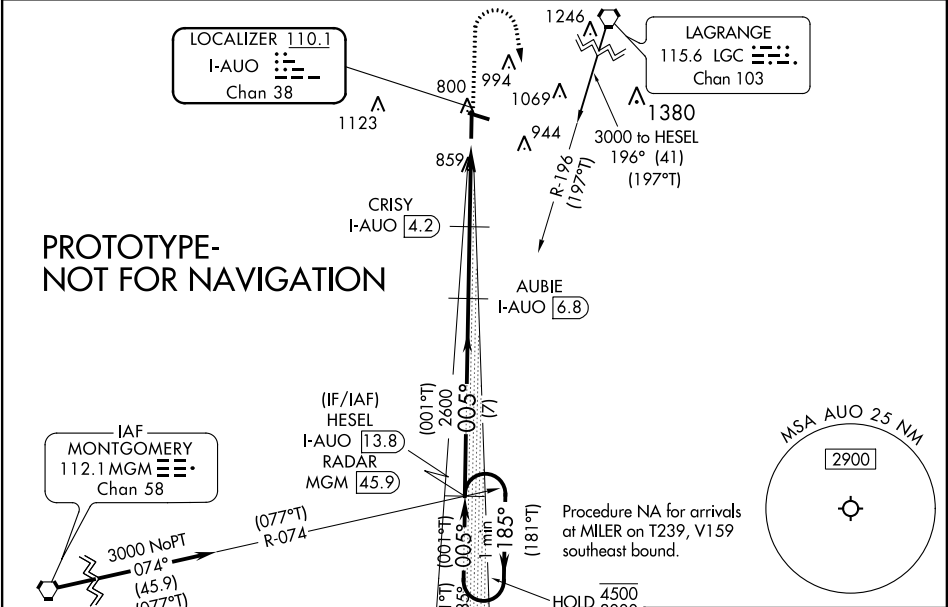
LOC/DME I-AUO	APP CRS	Rwy Idg	5264
110.1	005°	TDZE	759
Chan 38		Apt Elev	777

ILS or LOC RWY 36

AUBURN UNIVERSITY RGNL (AUO)

DME required.	MALSF	MISSED APPROACH: Climb to 1500 then climbing right turn to 3000 on heading 175° and on LGC VORTAC R-196 to HESEL/I-AUO 13.8 DME/RADAR and hold.
<div><div>▼</div><div>Inop table does not apply to S-ILS 36 all Cats. Procedure NA for arrival on MGM VORTAC airway radials 026 CW 126.</div><div>▲</div><div>Procedure NA for arrival on LGC VORTAC airway radials 159 CW 228.</div></div>	<div><div>✈</div><div></div></div>	

AWOS-3PT 132.575	ATLANTA APP CON ★ 125.5 323.1	CLNC DEL 118.7	UNICOM 123.0 (CTAF) 0
---------------------	----------------------------------	-------------------	--------------------------



	ELEV 777	TDZE 759
One Minute Holding Pattern	HESEL I-AUO 13.8 RADAR	AUBIE I-AUO 6.8
4500 3000	1500 3000	LGC R-196
GS 3.00° TCH 44	CRISY I-AUO 4.2	HESEL I-AUO 13.8
7 NM	2.5 NM	2.1 NM
1.1 NM		
CATEGORY	A	B
S-ILS 36	959-3/4	200 (200-3/4)
S-LOC 36	1120-3/4	361 (400-3/4)
CIRCLING	1240-1 463 (500-1)	1360-1 583 (600-1)
	1380-1 3/4 603 (700-1 3/4)	1440-2 663 (700-2)

LOC/DME I-AUO

110.1

Chan **38**

APP CRS

005°

Rwy Idg

5264

TDZE

759

Apt Elev

777

OLD

ILS or LOC RWY 36

AUBURN UNIVERSITY RGNL (AUO)

DME required.

▼

▲

Inop table does not apply to S-ILS 36 all Cats.

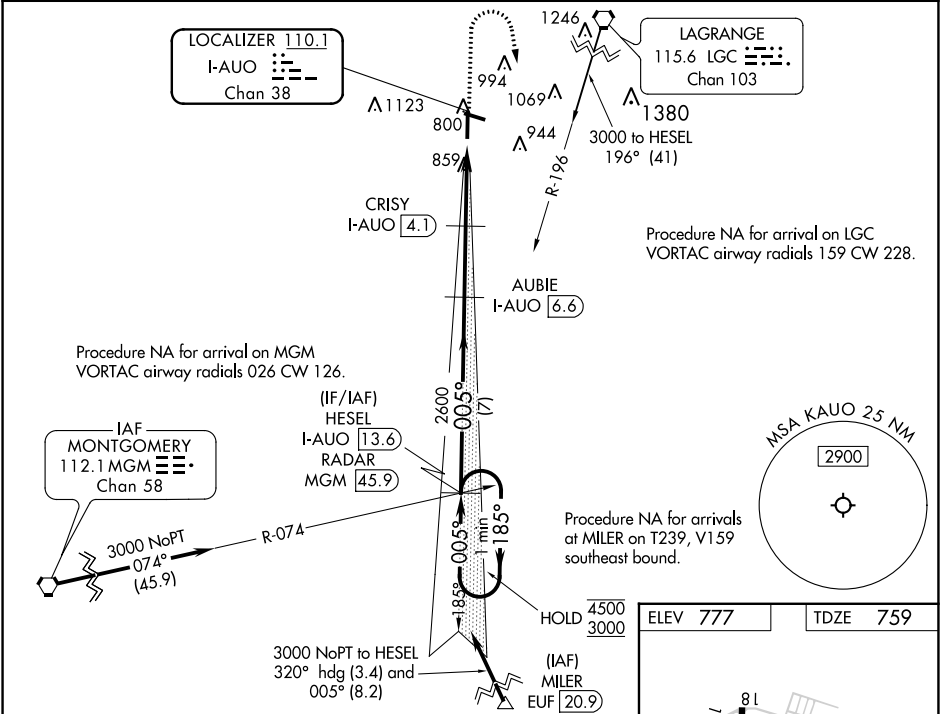
MALSF

2

1

MISSED APPROACH: Climb to 1500 then climbing right turn to 3000 on heading 175° and on LGC VORTAC R-196 to HESEL/I-AUO 13.6 DME/RADAR and hold.

AWOS-3PT 132.575	ATLANTA APP CON ★ 125.5 323.1	CLNC DEL 118.7	UNICOM 123.0 (CTAF) 0
----------------------------	---	--------------------------	---------------------------------



One Minute Holding Pattern	HESEL I-AUO 13.6 RADAR		AUBIE I-AUO 6.6		1500	3000	LGC R-196	HESEL I-AUO 13.6
CATEGORY	A		B		C		D	
S-ILS 36			959-¾		200 (200-¾)			
S-LOC 36			1120-¾		361 (400-¾)			
CIRCLING	1240-1 463 (500-1)	1360-1 583 (600-1)	1380-1¾ 603 (700-1¾)	1440-2 663 (700-2)				

ELEV 777	TDZE 759
<div><div>81</div><div>4000 X 75</div><div>5264 X 100</div><div>0.9% UP</div><div>36</div><div>005°</div><div>MIRL Rwy 11-29</div><div>HIRL Rwy 18-36</div><div>FAF to MAP 5.7 NM</div></div>	
Knots	60 90 120 150 180
Min:Sec	5:42 3:48 2:51 2:17 1:54

