

Flight Procedure Tracking Form		Action: AMENDMENT	Task Type: IAP	Date Open: 06/19/2019	Task #: 2019061931977501006	Request #: 20190619319775
Procedure: RNAV (GPS) Z RWY 29R AMDT 2E			Airport ID: KTUS	Airport: TUCSON INTL		Reimbursable #: NO
City: TUCSON	ST: AZ	GPS #:	Estimated Chart Date: 01/30/2020		FICO #:	
Fac ID: N/A		Fac. Type:		Specialist: THOR CORNELL		
Procedure Review						
	Rec'd	Rel'd	Full Name	Comments		
Lead:	06/28/2019			<div style="display: flex; justify-content: space-between;"> <div> QUALITY 24 CHECKED </div> <div>Digitally signed by</div> <div>Digitally signed by</div> </div>		
QA:				<div style="display: flex; justify-content: space-between;"> <div> 24 DAVID W SAUER </div> <div>WARDELL HENNING</div> </div>		
Liaison:				<div style="display: flex; justify-content: space-between;"> <div> CHECKED Dec 02, 2019 </div> <div>Dec 20, 2019</div> </div>		
Procedure Comments: ENROUTE-NON Remark Type: INFORMATION						
PROCESSED IAW AIRCRAFT OPERATIONS GROUP (AJW-33) MEMO, OCTOBER 3, 2018, SUBJECT: FLIGHT INSPECTION REVIEW NOT REQUIRED. ACTIVE DATA USED FOR KTUS AIRPORT AND RUNWAYS. CONTACT WARDELL HENNING: 405.954.9954.						

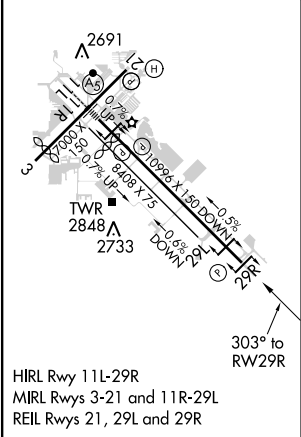
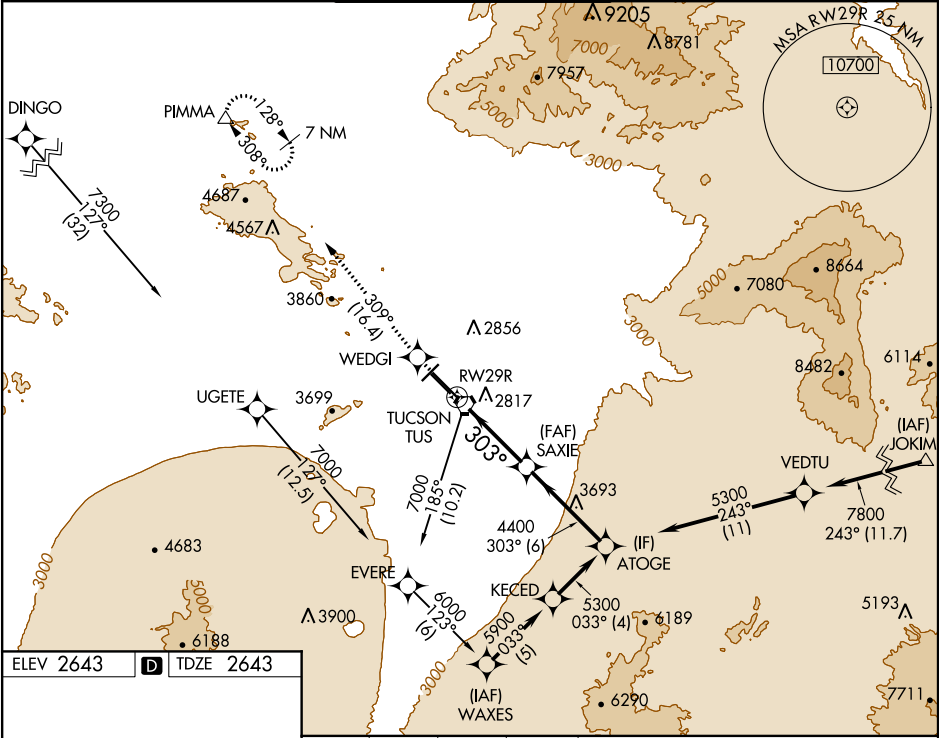
QUALITY
 15
CHECKED



WAAS CH 82203 W29A	APP CRS 303°	Rwy Idg 10996 TDZE 2643 Apt Elev 2643
--	------------------------	--

OLD

RNAV (GPS) Z RWY 29R
TUCSON INTL (TUS)

RNP APCH: For uncompensated Baro-VNAV systems, LNAV/VNAV NA below -3°C or above 52°C.		MISSED APPROACH: Climb to 6800 direct WEDGI and track 309° to PIMMA and hold.		
ATIS 123.8 279.65	TUCSON APP CON 119.4 318.1	TUCSON TOWER 118.3 257.8	GND CON 124.4 348.6	CLNC DEL 126.65 326.2



6800 ↑		WEDGI 		Ir 309°		PIMMA △					
*LNAV only								SAXIE			
		RW29R		*1.9 NM to RW29R		4400		303°			
		1.9		3.4 NM		4400		5300			
								ATOGE			
								GP 3.00° TCH 53			
CATEGORY		A		B		C		D		E	
LPV DA		2929-1 286 (300-1)									
LNAV/ VNAV DA		3106-1½ 463 (500-1½)									
		3106-1¾ 463 (500-1¾)									
LNAV MDA		3300-1 657 (700-1)				3300-1⅞ 657 (700-1⅞)		3300-2 657 (700-2)		3300-2¼ 657 (700-2¼)	
CIRCLING		3300-1 657 (700-1)				3300-1⅞ 657 (700-1⅞)		3300-2 657 (700-2)		3800-3 1157 (1200-3)	