

Flight Procedures Cover Page	Task Action: FLIGHT CHECK	Task Type: IAP	Estimated Chart Date: 05/19/2022	APWS Task ID: 240A5ABF40924058BF1973272EF5A8BC	APWS Project ID: 8EF1CECE8DA84A02869A25CB11F207D2
Procedure: ILS OR LOC RWY 2 AMDT 18		Enroute: NO	Specialist: Downey, Lorri		Agreement Number:
Airport ID: KCOU			Airport City: COLUMBIA		State: MO
Facility ID:	Facility Type:	Flight Inspection Remark Type: New FC Slot			
<div>Procedure Comments: PENDING AIRNAV DATA USED FOR AMENDMENT. CANCELS NOTAM FDC 2/7557 - UPDATED MISSED APPROACH. CONTACT: JON DENTON 405-954-5467.</div> <div>Digitally signed by CASIMIR L TABAKA Mar 31, 2022</div> <div>QUALITY 41 CHECKED</div> <div>QUALITY 8 CHECKED</div>					

FIPC BASIC FORM								
PROCEDURE: ILS OR LOC RWY 2 AMDT 18			AIRPORT NAME: COLUMBIA RGNL		AIRPORT ID: KCOU	SPECIAL CONTROL NO: OP-02-173-22		
FAC ID: COU		CITY: COLUMBIA			ST: MO	ORIG CHART DATE: 05/19/2022		
DFL TYPE: PROC/A	THIRD PARTY: <input type="checkbox"/> YES	EST. TIME ON SITE: 0.4	REIMB. NUMBER:		PTS TASK ID:			
PREFLIGHT NOTES								
REVIEWER:					DATE:			
COMMENTS:					CHECK ONE: <input type="checkbox"/> FLT CK REQ <input type="checkbox"/> NFCR <input type="checkbox"/> REJECT			
							YES	NO
					CPV COMPLETE?		X	
PROCEDURE RESULTS								
INSPECTION DATE: 03/29/2022		CREW #: VN423	N #: N73	INSTRUMENT PROCEDURE STATUS: <input checked="" type="checkbox"/> SAT <input type="checkbox"/> SAT W/CHANGES <input type="checkbox"/> UNSAT		ARINC CODING: <input checked="" type="checkbox"/> SAT <input type="checkbox"/> SAT/GOLD <input type="checkbox"/> UNSAT		
FLIGHT INSPECTOR SIGNATURE: terry hester @ 03/30/2022 08:54			PRINTED NAME: HESTER, TERRY LEE				NOTAM INITIATED? <input type="checkbox"/> YES <input checked="" type="checkbox"/> NO	
FLIGHT INSPECTOR REMARKS: Special Number: O-03-246-22: Establish new Missed Approach Holding Pattern. Columbia Regional Airport, Columbia, MO. ILS OR LOC RWY 2 AMDT 18, SAT.								
IN-FLIGHT OBSTACLE REPORT								
OBSTRUCTION ID #:	COORDINATES OR LOCATION:		GNSS ALTITUDE (MSL):		BAROMETRIC ALTITUDE (MSL):		HEIGHT ABOVE GROUND LEVEL:	

[Print](#)

Project Name: ILS or LOC RWY 2

Project Reason: CURRENT MISSED APPROACH UTILIZES LOCALIZER BACK COURSE WHICH HAS BEEN DECOMMISSIONED. CHANGING MISSED APPROACH INSTRUCTIONS TO READ: CLIMB TO 2700 ON COU VOR/DME R-020 TO BOVEN/COU 6.34 DME AND HOLD, CONTINUE CLIMB-IN-HOLD TO 2700. HOLD NORTH, LEFT TURNS, 200.40 INBOUND.

Last Updated By: Lorri Downey

Last Updated At: 2022-01-25 19:22:38.41628

Status: Active

!FDC 2/7557 COU IAP COLUMBIA RGNL, COLUMBIA, MO. ILS OR LOC RWY 2, AMDT 17... MISSED APPROACH: CLIMB TO 2700 ON COU VOR/DME R-020 TO BOVEN/COU 6.34 DME AND HOLD, CONTINUE CLIMB-IN-HOLD TO 2700. HOLD NORTH, LEFT TURNS, 200.40 INBOUND.. 2201251920-2401251920EST

FIG

ILS or LOC RWY 2

COLUMBIA RGNL (COU)

MISSED APPROACH: Climb to 2700 on COU
VOR/DME R-020 to BOVEN 6.3 DME and hold,
continue climb-in-hold to 2700.



MSA COU 25 NM
3100

HALLSVILLE
114.2 HLV
Chan 89

COLUMBIA
110.2 COU
Chan 39

LOCALIZER 110.7
I-COU
Chan 44

BOVEN
COU 6.3

NEUKS
I-COU 3.4

YATGU
I-COU 7.2

CATIL
I-COU 13.1

MIZZU
HLV 36.1

2037
△
3000 NoPT to CATIL
(101° T) 101° hdg (7.3) and
(021° T) 021° (3.9)

HOLD 6000
2700

ELEV 889
D **TDZE 889**

HIRL Rwy 2-20
MIRL Rwy 13-31
REIL Rwy 20

PROTOTYPE: NOT FOR NAVIGATION

ELEV 889

021° 5.9 NM from FAF

2

949

5500 X 100

7402 X 150

TWR 960

HIRL Rwy 2-20

MIRL Rwy 13-31

REIL Rwy 20

REIL Rws 13 and 31




AUTOMATED AL-5595 ILS or LOC RWY 2

NC-3
28 JAN 2022
COMPILER: CG
REVIEWER:
DBL CHKR:
EFF DATE: FIG

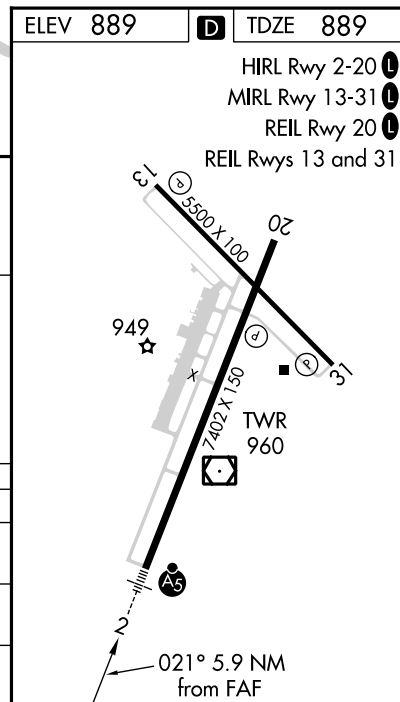
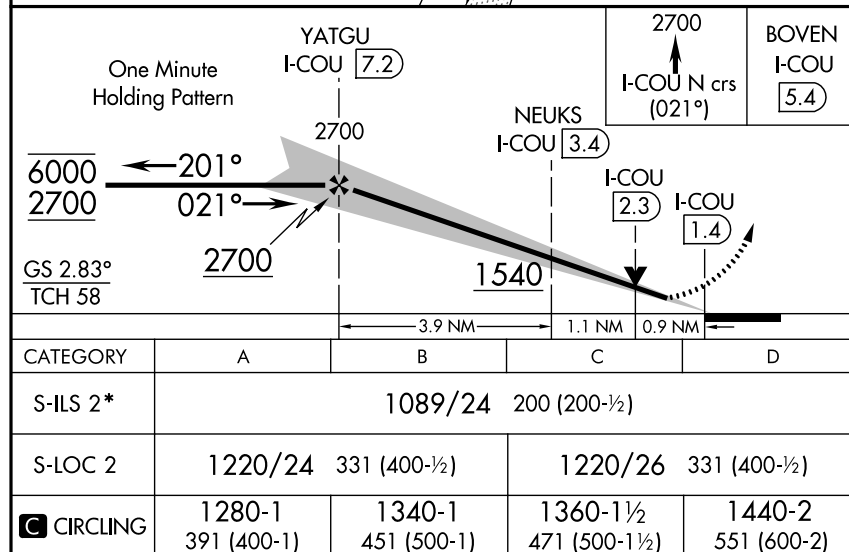
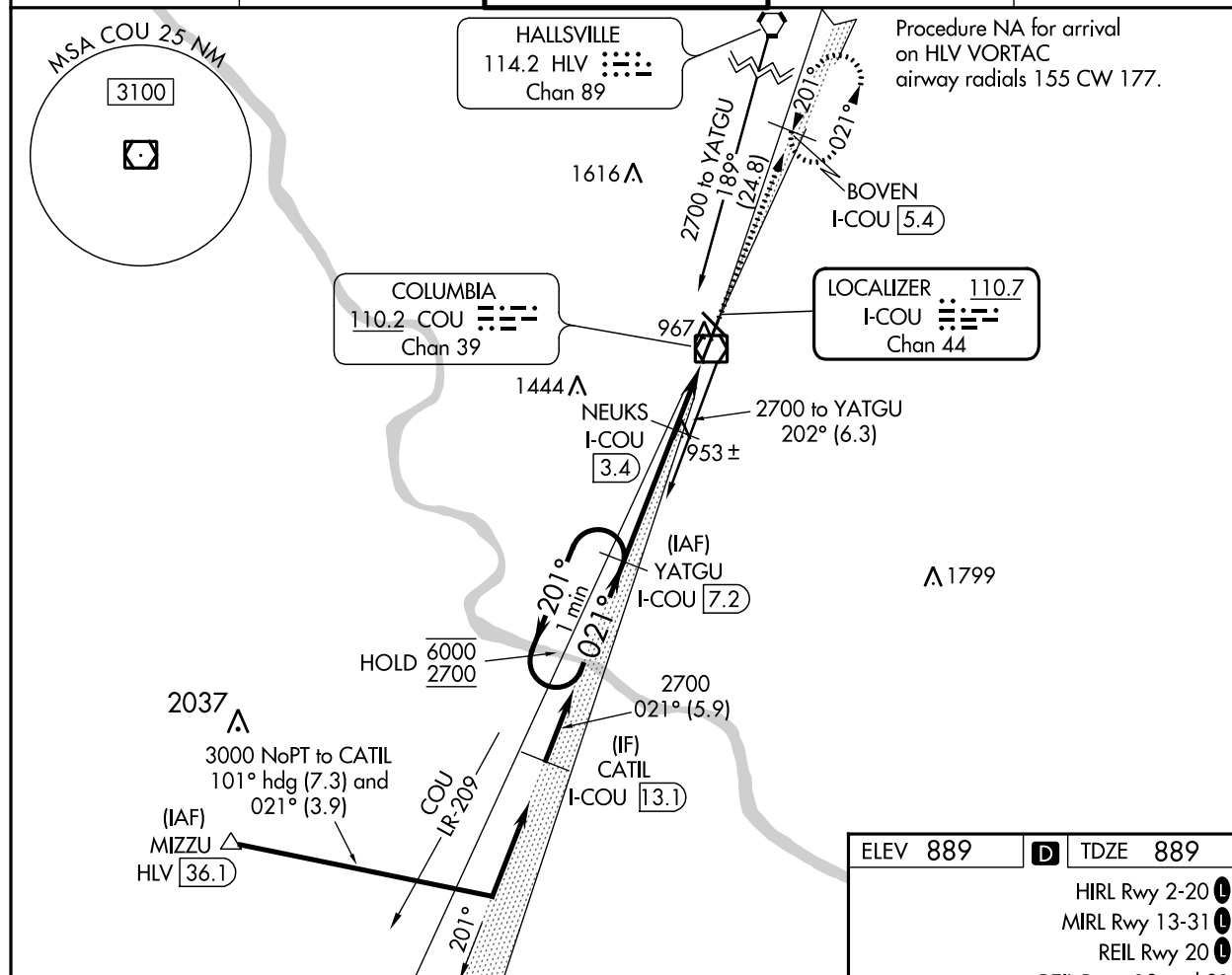
COLUMBIA RGNL (COU)
ILS or LOC RWY 2

LOC/DME I-COU <u>110.7</u> Chan 44	APP CRS 021°	Rwy Idg 7402 TDZE 889 Apt Elev 889
--	------------------------	---

ILS or LOC RWY 2

DME required.	MALSR	MISSED APPROACH: Climb to 2700 on I-COU localizer north course (021°) to BOVEN/I-COU 5.4 DME and hold, continue climb-in-hold to 2700.
 Circling NA for Cat D west of Rws 2 and 13.  *RVR 1800 authorized with use of FD or AP or HUD to DA.		

ATIS 128.45	MIZZU APP CON 124.375 353.925	COLUMBIA TOWER★ 119.3 (CTAF) 0 363.25	GND CON 121.6	UNICOM 122.95
-----------------------	---	---	-------------------------	-------------------------



NC-3, 30 DEC 2021 to 27 JAN 2022

NC-3, 30 DEC 2021 to 27 JAN 2022

COLUMBIA, MISSOURI
Amdt 17 02DEC21

38°49'N-92°13'W

COLUMBIA RGNL (COU)
ILS or LOC RWY 2

