

Flight Procedures Cover Page	Task Action: FLIGHT CHECK	Task Type: IAP	Estimated Chart Date: 06/15/2023	APWS Task ID: 23E493B8147A4C298CB62D2181A1FBDF	APWS Project ID: 4968CC625AE24399B4A11FB0E32C37A1
Procedure: RNAV (GPS) RWY 6 AMDT 2A		Enroute: NO	Specialist: Tuttle, Judith		Agreement Number:
Airport ID: KTHA			Airport City: TULLAHOMA		State: TN
Facility ID:	Facility Type:	Flight Inspection Remark Type: New FC Slot			
<div>Procedure Comments: INCORPORATED P-NOTAM 1/1226 FOR AMDT 2 INTO FORM. ACTIVE DATA USED FOR KTHA. NEW CONTROLLING OBSTACLES: CIRCLING CAT A: 1231 TOWER (47-115232) 352258.51N/0861338.82W CIRCLING CAT B: 1262 TRANSMISSION_LINE (47-115264) 352317.97N/0861721.26W CIRCLING CAT C: 1319 TOWER (47-000549) 352036.00N/0861202.08W FAS OBST: 1258 WATER TOWER (47-115341) 352211.75N/0861739.00W CONTACT: ERIC SUSKI, 405.954.7331.</div> <div>QUALITY 10 CHECKED</div>					

FIPC BASIC FORM						
PROCEDURE: RNAV (GPS) RWY 6 AMDT 2A			AIRPORT NAME: TULLAHOMA RGNL/WM NORTHERN		AIRPORT ID: KTHA	SPECIAL CONTROL NO: AG-02-252-23
FAC ID: KTHA06.02		CITY: TULLAHOMA			ST: TN	ORIG CHART DATE: 06/15/2023
DFL TYPE: PROC/S	THIRD PARTY: <input type="checkbox"/> YES	EST. TIME ON SITE: 0.4	REIMB. NUMBER: AC0721	PTS TASK ID: 23E493B8147A4C298CB62D2181A1FBDF		
PREFLIGHT NOTES						
REVIEWER:					DATE:	
COMMENTS:					CHECK ONE:	
					<input type="checkbox"/> FLT CK REQ <input type="checkbox"/> NFCR <input type="checkbox"/> REJECT	
						YES
					CPV COMPLETE?	X
PROCEDURE RESULTS						
INSPECTION DATE: 04/18/2023	CREW #: VN426	N #: N72	INSTRUMENT PROCEDURE STATUS: <input checked="" type="checkbox"/> SAT <input type="checkbox"/> SAT W/CHANGES <input type="checkbox"/> UNSAT		ARINC CODING: <input checked="" type="checkbox"/> SAT <input type="checkbox"/> SAT/GOLD <input type="checkbox"/> UNSAT	
FLIGHT INSPECTOR SIGNATURE: robert e williams @ 04/19/2023 07:02			PRINTED NAME: WILLIAMS, ROBERT EMIL			NOTAM INITIATED? <input type="checkbox"/> YES <input checked="" type="checkbox"/> NO
FLIGHT INSPECTOR REMARKS: Tullahoma RGNL/WM Northern FLD, Tullahoma, TN, RNAV (GPS) RWY 01 AMDT 2A. SAT						
IN-FLIGHT OBSTACLE REPORT						
OBSTRUCTION ID #:	COORDINATES OR LOCATION:	GNSS ALTITUDE (MSL):	BAROMETRIC ALTITUDE (MSL):	HEIGHT ABOVE GROUND LEVEL:		

WAAS CH 99324 W06A	APP CRS 061°	Rwy Idg TDZE Apt Elev	5501 1084 1084
--	------------------------	-----------------------------	---

RNAV (GPS) RWY 6

TULLAHOMA RGNL/WM NORTHERN FLD (THA)

RNP APCH - GPS.

▼ Circling NA to Rwy 9 and 27. Circling to Rwy 18 and 36 NA at night.

▲ Rwy 6 helicopter visibility reduction below ¾ SM NA. Inop table does not apply to LPV all Cnts and LNAV Cat A/B. For uncompensated Baro-VNAV systems, LNAV/VNAV NA below -17°C or above 54°C. For inop ALS increase LNAV/VNAV Cat C/D visibility to 1¾ SM.

ODALS

MISSED APPROACH: Climb to 3500 direct IDEYA and hold.

AWOS-3 128.325	MEMPHIS CENTER 128.15 323.125	UNICOM 123.0 (CTAF)
--------------------------	---	-------------------------------

Procedure NA for arrivals at SYI VOR/DME on V67 northwest bound.

3000 210° (13.1) (207°T)

SHELBYVILLE SYI

1524

PROTOTYPE- NOT FOR NAVIGATION

4 NM (058°T) 061° (238°T) IDEYA

(IAF) FOVEK 3000 NoPT 136° (7.2) (133°T)

(055°T) 3000 NoPT 058° (4.7)

(IF/IAF) EXEGE 2700 061° (6) (058°T)

(IAF) ATWUS 4 NM HOLD 6000 3000

241° (238°T)

1258

(FAF) DACNA 2700 061°

JAROL 2.2 NM to RW06

1227

MSA RW06 25 NM 3400

ELEV 1084 TDZE 1084

4 NM Holding Pattern

EXEGE

DACNA

JAROL 2.2 NM to RW06

1.2 NM to RW06

RW06

3500 IDEYA

6000 3000

GP 3.00° TCH 41

2700 1820

6 NM 2.8 NM 1 NM 1.2 NM

CATEGORY	A	B	C	D
LPV DA		1334-1	250 (300-1)	
LNAV/VNAV DA		1525-1 ½	441 (500-1 ½)	
LNAV MDA		1500-1	416 (500-1)	
CIRCLING	1540-1 456 (500-1)	1580-1 496 (500-1)	1620-1 ½ 536 (600-1 ½)	1640-2 556 (600-2)

81

5501 X 100

5001 X 100

4203 X 100

3130 X 100

27

36

061°

MIRL Rwy 6-24 and 18-36

REIL Rwy 6, 18, 24 and 36

TULLAHOMA, TENNESSEE

Amnd 2A FIG

TULLAHOMA RGNL/WM NORTHERN FLD (THA)

35°23'N-86°15'W

RNAV (GPS) RWY 6

OLD

TULLAHOMA, TENNESSEE

AL-508 (FAA)

22251

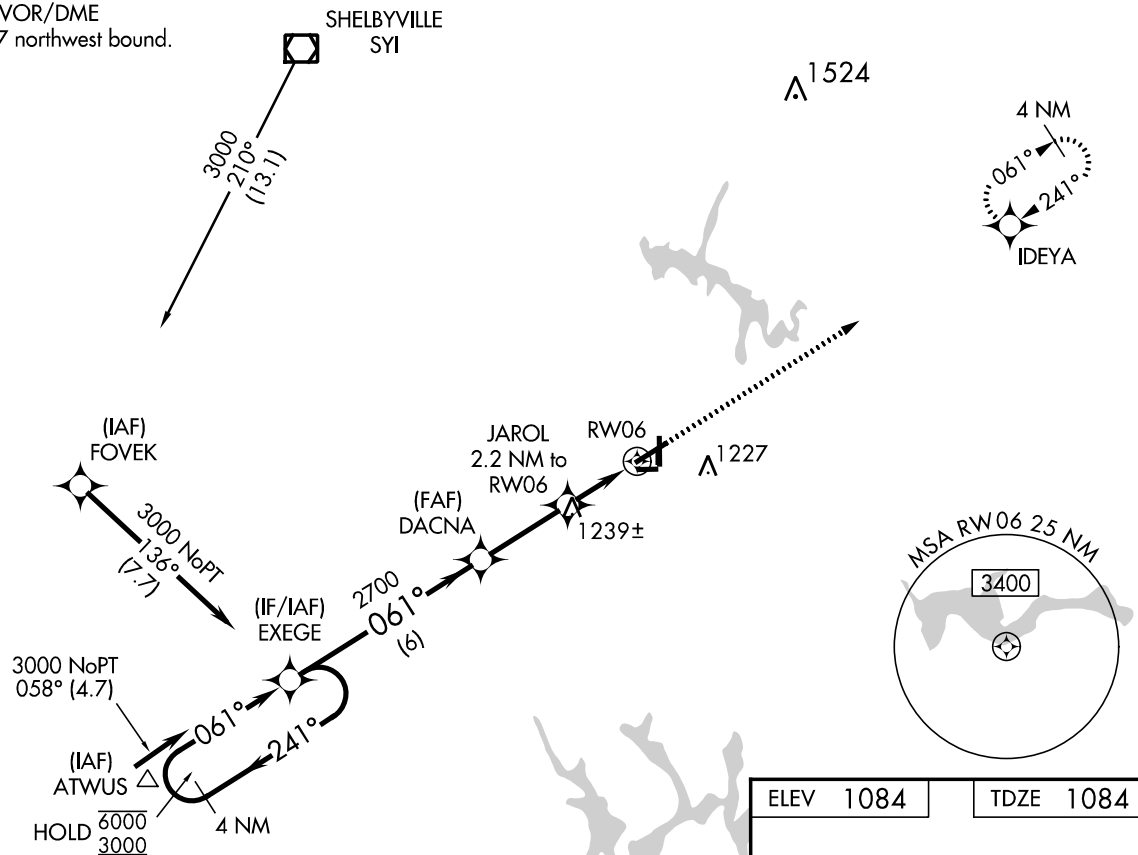
WAAS CH 99324 W06A	APP CRS 061°	Rwy Idg TDZE Apt Elev	5501 1084 1084
--	------------------------	-----------------------------	---

RNAV (GPS) RWY 6

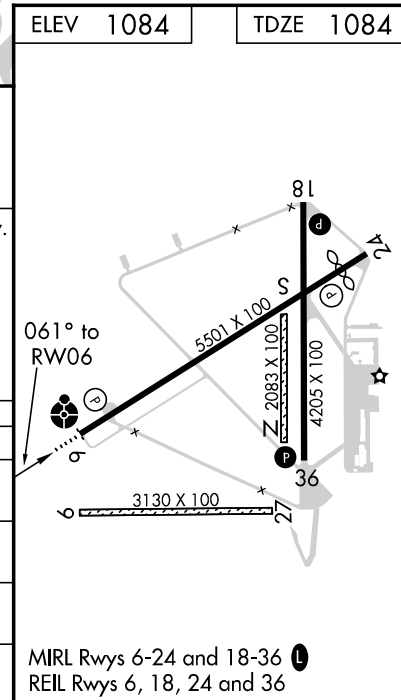
TULLAHOMA RGNL/WM NORTHERN FLD (THA)

RNP APCH.		ODALS	MISSED APPROACH: Climb to 3500 direct IDEYA and hold.
<p>▼ Circling NA to Rwy 9 and 27. Inop table does not apply. For uncompensated Baro-VNAV systems, LNAV/VNAV NA below -17°C or above 54°C.</p>			
AWOS-3 128.325	MEMPHIS CENTER 128.15 323.125		UNICOM 123.0 (CTAF) 1

Procedure NA for arrivals at SYI VOR/DME on V67 northwest bound.



<div>4 NM Holding Pattern</div> <div>6000 3000</div> <div>GP 3.00° TCH 41</div>				<div>EXEGE</div> <div>2700</div> <div>6 NM</div>				<div>DACNA</div> <div>2700</div> <div>2.8 NM</div>				<div>JAROL</div> <div>2.2 NM to RW06</div> <div>1.1 NM</div>				<div>3500</div> <div>IDEYA</div> <div>*LNAV only</div>			
<div>← 241°</div> <div>→ 061°</div>				<div>061°</div>				<div>*1820</div>				<div>*1.1 NM to RW06</div> <div>RW06</div>							
CATEGORY		A		B		C		D											
LPV DA				1334-3/4		250 (300-3/4)													
LNAV/VNAV DA				1525-13/8		441 (500-13/8)													
LNAV MDA		1500-1		416 (500-1)		1500-1 1/8		416 (500-1 1/8)											
CIRCLING		1540-1 456 (500-1)		1560-1 476 (500-1)		1580-1 1/2 496 (500-1 1/2)		1640-2 556 (600-2)											



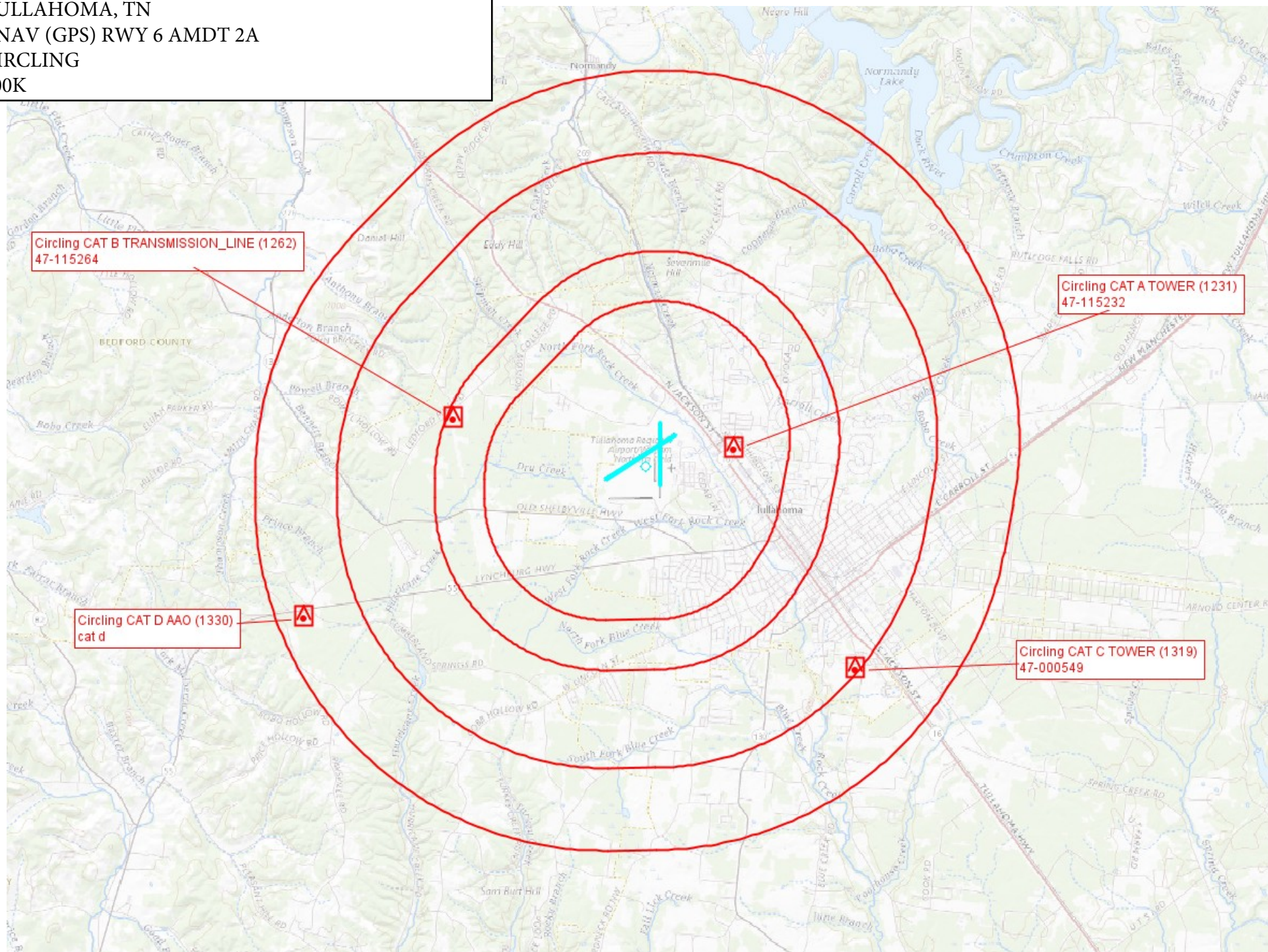
TULLAHOMA, TENNESSEE
Amdt 2 03JAN19

TULLAHOMA RGNL/WM NORTHERN FLD (THA)
35°23'N-86°15'W
RNAV (GPS) RWY 6

SE-1, 01 DEC 2022 to 29 DEC 2022

SE-1, 01 DEC 2022 to 29 DEC 2022

TULLAHOMA RGNL/WM NORTHERN FLD (KTHA)
TULLAHOMA, TN
RNAV (GPS) RWY 6 AMDT 2A
CIRCLING
100K



TULLAHOMA RGNL/WM NORTHERN FLD (KTHA)
TULLAHOMA, TN
RNAV (GPS) RWY 6 AMDT 2A
LNAV FINAL, FAS OBST
1:00K

FAS OBST WATER_TOWER (1258)
47-115341

LNAV DACNA to JAROL TOWER (1360)
47-023149

JAROL

DACNA

