

Flight Procedures Cover Page	Task Action: FLIGHT CHECK	Task Type: IAP	Estimated Chart Date: 09/07/2023	APWS Task ID: 23B4C09AC0204DDE9FB9CA488C226807	APWS Project ID: 9E8F1CD4F0C244DFB26F290A2931FA68
Procedure: RNAV (GPS) RWY 23 AMDT 2C		Enroute: NO	Specialist: Hilley, Micah		Agreement Number:
Airport ID: KSBX			Airport City: SHELBY		State: MT
Facility ID:	Facility Type:	Flight Inspection Remark Type: New FC Slot			
<div>Procedure Comments:</div> <div>UTILIZED PENDING AIRNAV DATA FOR KSBX RWY 23.</div> <div>ESTABLISHED PRIMARY ALTIMETER.</div> <div>CONTACT JASON KRETSCHMER: AJV-A421, 405-954-4019.</div> <div><div>QUALITY 10 CHECKED</div><div>QUALITY 41 CHECKED</div></div>					

FIPC BASIC FORM						
PROCEDURE: RNAV (GPS) RWY 23 AMDT 2C			AIRPORT NAME: SHELBY		AIRPORT ID: KSBX	SPECIAL CONTROL NO: SG-06-009-23
FAC ID: KSBX23.02		CITY: SHELBY			ST: MT	ORIG CHART DATE: 10/05/2023
DFL TYPE: PROC/S	THIRD PARTY: <input type="checkbox"/> YES	EST. TIME ON SITE: 0.4	REIMB. NUMBER:	PTS TASK ID: 23B4C09AC0204DDE9FB9CA488C226807		
PREFLIGHT NOTES						
REVIEWER: gary j veer					DATE: 06/21/2023	
COMMENTS: Package is SAT/Change for incorrect FIG.					CHECK ONE: <input checked="" type="checkbox"/> FLT CK REQ <input type="checkbox"/> NFCR <input type="checkbox"/> REJECT <div style="display: flex; justify-content: space-between; border-top: 1px solid black; border-bottom: 1px solid black; padding: 2px 5px;"> YES NO </div> CPV COMPLETE? <div style="display: flex; justify-content: space-between; border-top: 1px solid black; border-bottom: 1px solid black; padding: 2px 5px;"> X </div>	
PROCEDURE RESULTS						
INSPECTION DATE: 06/21/2023	CREW #: VN362	N #: N76	INSTRUMENT PROCEDURE STATUS: <input type="checkbox"/> SAT <input checked="" type="checkbox"/> SAT W/CHANGES <input type="checkbox"/> UNSAT		ARINC CODING: <input type="checkbox"/> SAT <input type="checkbox"/> SAT/GOLD <input type="checkbox"/> UNSAT	
FLIGHT INSPECTOR SIGNATURE: gary j veer @ 06/21/2023 22:39			PRINTED NAME: VEER, GARY JOHN			NOTAM INITIATED? <input type="checkbox"/> YES <input checked="" type="checkbox"/> NO
FLIGHT INSPECTOR REMARKS: Note changes, local altimeter established, visibility adjustments, 20:1 slope clear, night restrictions removed. SHELBY, SHELBY, MT, RNAV (GPS) RWY 23, AMDT 2C, SAT. Runway survey SAT w/Changes. Package contains incorrect FIG. Night eval not required according to Policy (JM) because procedures and lights are "grandfathered."						
<div style="border: 1px solid blue; padding: 5px; margin: 5px;"> Procedure SAT. SAT w/Changes is a typo per PIC, Garry Veer and should read: "Runway survey SAT. Package contains incorrect FIG". Correct FIG added to this file. E-mail added to project's DATA folder. </div>						
IN-FLIGHT OBSTACLE REPORT						
OBSTRUCTION ID #:	COORDINATES OR LOCATION:	GNSS ALTITUDE (MSL):	BAROMETRIC ALTITUDE (MSL):	HEIGHT ABOVE GROUND LEVEL:		

SHELBY, MONTANA

AL-5372 (FAA)

FIG

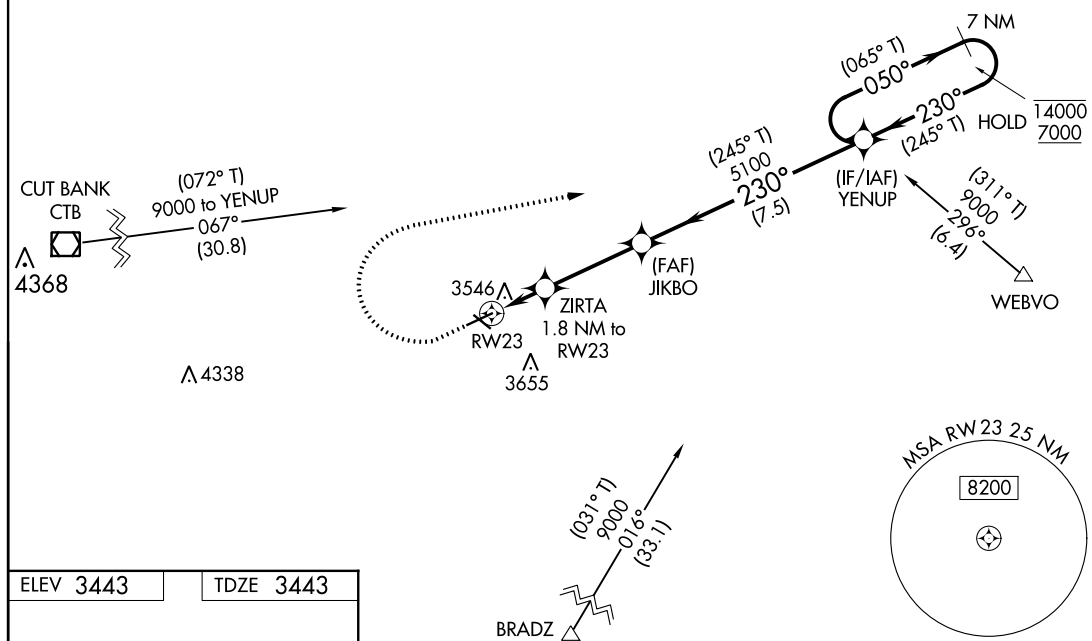
WAAS CH 78026 W23A	APP CRS 230°	Rwy Idg TDZE Apt Elev	5005 3443 3443
--	------------------------	-----------------------------	---

RNAV (GPS) RWY 23

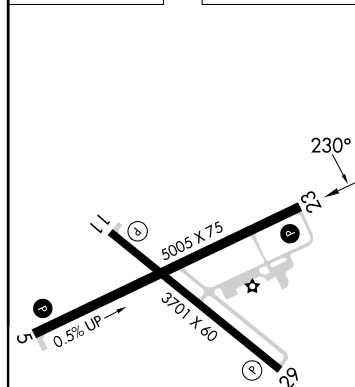
SHELBY (SBX)

RNP APCH - GPS.			MISSED APPROACH: Climb to 4300 then climbing right turn to 9000 direct YENUP and hold, continue climb-in-hold to 9000.
<div><div><div>▼</div><div>▲</div></div><div>Rwy 23 helicopter visibility reduction below ¾ SM NA. Baro-VNAV and VDP NA when using Cut Bank altimeter setting. For uncompensated Baro-VNAV systems, LNAV/VNAV NA below -21°C or above 54°C. When local altimeter setting not received, use Cut Bank altimeter setting.</div></div>			
AWOS-3PT 128.325	SALT LAKE CITY CENTER 133.4 285.4	UNICOM 122.8 (CTAF) 0	

PROTOTYPE: NOT
FOR NAVIGATION



ELEV 3443 TDZE 3443



MIRL Rwy 5-23 and 11-29 0

4300 9000 YENUP		VGSI and RNAV glidepath not coincident (VGSI Angle 3.00/TCH 32).		7 NM Holding Pattern
ZIRTA 1.8 NM to RW23		JIKBO 5100	(065° T) 050° 14000 7000	
RW23 4060		5100	(245° T) 230° (245° T)	
1.8 NM		3.3 NM	7.5 NM	
CATEGORY	A	B	C	D
LPV DA	3799-1 356 (400-1)			
LNAV/VNAV DA	3813-1 370 (400-1)			
LNAV MDA	3920-1 477 (500-1)		3920-1 $\frac{3}{8}$ 477 (500-1 $\frac{3}{8}$)	
CIRCLING	4020-1 577 (600-1)	4080-1 637 (700-1)	4100-1 $\frac{3}{4}$ 657 (700-1 $\frac{3}{4}$)	4220-2 $\frac{1}{2}$ 777 (800-2 $\frac{1}{2}$)

SHELBY, MONTANA

SHELBY (SBX)

Amdt 2C FIG

48°32'N-111°52'W

RNAV (GPS) RWY 23

AUTOMATED AL-5372 RNAV (GPS) RWY 23

NW-1
31 MAY 2023
COMPILER: CG
REVIEWER:
DBL CHKR:
EFF: FIG

WAAS CH 78026 W23A	APP CRS 230°	Rwy Idg TDZE 3443 Apt Elev 3443
--	------------------------	---

OLD

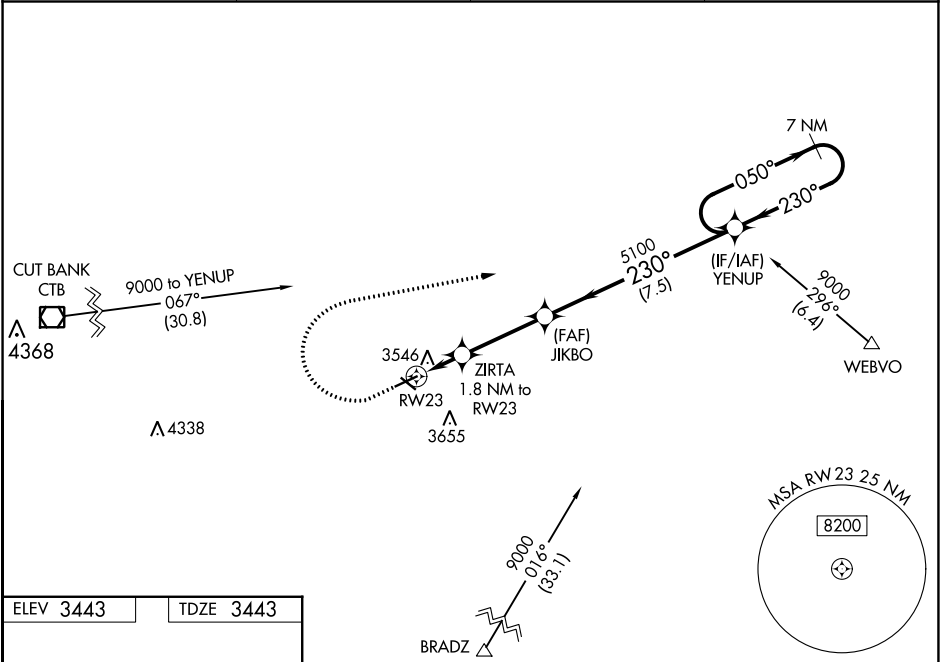
RNAV (GPS) RWY 23
SHELBY (SBX)

NA

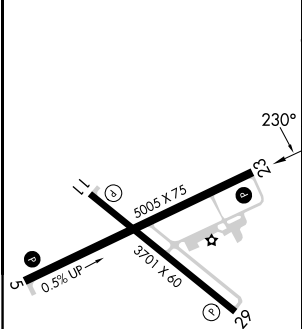
Baro-VNAV NA. Rwy 23 helicopter visibility reduction below 1 SM NA. DME/DME RNP-0.3 NA. Use Cut Bank altimeter setting, if not received use Great Falls altimeter setting and increase all DA 81 feet and all MDA 100 feet; increase LPV all Cats visibility $\frac{3}{8}$ mile, LNAV/VNAV all Cats, LNAV Cats C/D, Circling Cats C/D visibilities $\frac{1}{4}$ mile. Straight-in Rwy 23 NA at night. Circling Rwy 23 NA at night.

MISSED APPROACH: Climb to 4300 then climbing right turn to 9000 direct YENUP and hold, continue climb-in-hold to 9000.

AWOS-3PT 128.325	CTB ASOS 119.025	SALT LAKE CITY CENTER 133.4 285.4	UNICOM 122.8 (CTAF) 0
----------------------------	----------------------------	---	---------------------------------



ELEV 3443	TDZE 3443
------------------	------------------



4300 9000 YENUP

VGSI and RNAV glidepath not coincident (VGSI Angle 3.00/TCH 32).

*LNAV only.

ZIRTA 1.8 NM to RW23

JIKBO 5100

7 NM Holding Pattern

050° 230° 7000

GP 3.00° TCH 45

1.8 NM 3.3 NM 7.5 NM

CATEGORY	A	B	C	D
LPV DA	3799-1 $\frac{1}{8}$ 356 (400-1 $\frac{1}{8}$)			
LNAV/VNAV DA	3813-1 $\frac{1}{4}$ 370 (400-1 $\frac{1}{4}$)			
LNAV MDA	3920-1	477 (500-1)	3920-1 $\frac{3}{8}$	477 (500-1 $\frac{3}{8}$)
C CIRCLING	4020-1 577 (600-1)	4080-1 637 (700-1)	4100-1 $\frac{3}{4}$ 657 (700-1 $\frac{3}{4}$)	4220-2 $\frac{1}{2}$ 777 (800-2 $\frac{1}{2}$)

NW-1, 20 APR 2023 to 18 MAY 2023

NW-1, 20 APR 2023 to 18 MAY 2023