


Flight Procedures Cover Page	Task Action: FLIGHT CHECK	Task Type: IAP	Estimated Chart Date: 02/20/2025	APWS Task ID: 23A9E513EF1F47A599A8F44675AF0DDB	APWS Project ID: 3CFE3B3681AE407E9B7BD0D4268874B5
Procedure: RNAV (GPS) RWY 7 AMDT 1		Enroute: NO	Specialist: Johnson, Raymond		Agreement Number:
Airport ID: KSBA			Airport City: SANTA BARBARA		State: CA
Facility ID:	Facility Type:	Flight Inspection Remark Type: New FC Slot			
<div>Procedure Comments:</div> <div>TCH CHANGED FROM 48.1 TO 52.3.</div> <div>CRC REMAINDER CHANGED FROM 5910949B TO 6C2F60C1.</div> <div>ACTIVE DATA USED FOR KSBA</div> <div>CONTACT ALLAN WILL (405)954-6103.</div> <div>01/14/2025: THIS IS A CORRECTED COPY OF THE FORM DEVELOPED ON 10/16/24.</div> <div>F FILE</div> <div>1. TERMINAL ROUTES: ROUTES CESRA TO ITOBE AND IYOBE TO GOLET ADD DISTANCES 6.85 AND 6.71.</div> <div>2. NOTES: CHANGED NOTE FROM WHEN LOCAL ALTIMETER SETTING NOT RECEIVED, USE OXR ALTIMETER SETTING AND INCREASE LPV DA TO 386 FEET; INCREASE LNAV/VNAV DA TO 686 FEET AND ALL VISIBILITIES 1/4 SM. INCREASE ALL MDA'S 100 FT, AND LNAV VISIBILITY CAT C AND D 1/8 SM, AND CIRCLING VISIBILT CAT A/C/D 1/4 SM TO WHEN LOCAL ALTIMETER SETTING NOT RECEIVED, USE OXR ALTIMETER SETTING AND INCREASE LPV DA TO 392 FEET; INCREASE LNAV/VNAV DA TO 686 FEET AND ALL VISIBILITIES 1/4 SM. INCREASE ALL MDA'S 100 FT, AND LNAV VISIBILITY CAT C AND D 1/8 SM, AND CIRCLING VISIBILT CAT A/C 1/4 SM.</div> <div>QUALITY 10 CHECKED</div> <div>QUALITY 38 CHECKED</div>					

FIPC BASIC FORM						
PROCEDURE: RNAV (GPS) RWY 7 AMDT 1			AIRPORT NAME: SANTA BARBARA MUNI		AIRPORT ID: KSBA	SPECIAL CONTROL NO: SG-08-062-24
FAC ID: KSBA07.01		CITY: SANTA BARBARA			ST: CA	ORIG CHART DATE: 10/31/2024
DFL TYPE: PROC/S	THIRD PARTY: <input type="checkbox"/> YES	EST. TIME ON SITE: 0.4	REIMB. NUMBER:	PTS TASK ID: 23A9E513EF1F47A599A8F44675AF0DDB		
PREFLIGHT NOTES						
REVIEWER:					DATE:	
COMMENTS:					CHECK ONE: <input type="checkbox"/> FLT CK REQ <input type="checkbox"/> NFCR <input type="checkbox"/> REJECT	
						YES
					CPV COMPLETE? <input checked="" type="checkbox"/> X <input type="checkbox"/> NO	
PROCEDURE RESULTS						
INSPECTION DATE: 10/11/2024	CREW #: VN235	N #: N72	INSTRUMENT PROCEDURE STATUS: <input checked="" type="checkbox"/> SAT <input type="checkbox"/> SAT W/CHANGES <input type="checkbox"/> UNSAT		ARINC CODING: <input checked="" type="checkbox"/> SAT <input type="checkbox"/> SAT/GOLD <input type="checkbox"/> UNSAT	
FLIGHT INSPECTOR SIGNATURE: thomas e molokie @ 10/11/2024 16:18			PRINTED NAME: MOLOKIE, THOMAS EDWARD			NOTAM INITIATED? <input type="checkbox"/> YES <input checked="" type="checkbox"/> NO
FLIGHT INSPECTOR REMARKS: RNAV (GPS) Rwy 07 Amdt 1 flown, satisfactory. This completes inspection started 09/25/2024 by N72.						
IN-FLIGHT OBSTACLE REPORT						
OBSTRUCTION ID #:	COORDINATES OR LOCATION:	GNSS ALTITUDE (MSL):	BAROMETRIC ALTITUDE (MSL):	HEIGHT ABOVE GROUND LEVEL:		

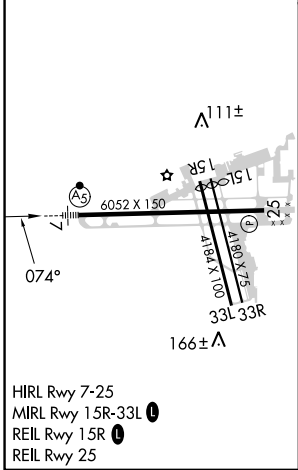
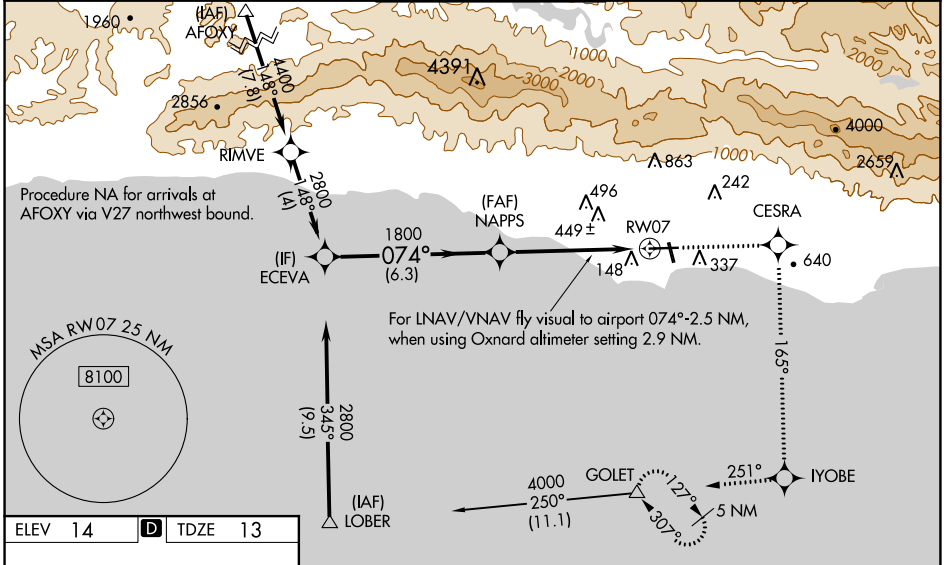
WAAS CH 78306 W07A	APP CRS 074°	Rwy Idg 6052 TDZE 13 Apt Elev 14
--	------------------------	---

OLD

RNAV (GPS) RWY 7
SANTA BARBARA MUNI (SBA)

RNP APCH-GPS.		<div>MALSR</div> <div></div>	MISSED APPROACH: Climb to 4000 direct CESRA and right turn via 165° track to IYOBE and right turn via 251° track to GOLET and hold, continue climb-in-hold to 4000.
<div><div><div>⚠</div><div>⚠</div></div><div>Inop table does not apply to LNAV/VNAV. For inop MALSR when using Oxnard altimeter setting, increase LPV all Cats visibility to 1½, and LNAV Cat C to 1¾, Cat D to 2. For inop MALSR, increase LPV all Cats visibility to RVR 6000. For uncompensated Baro-VNAV systems, LNAV/VNAV NA below -15°C or above 49°C. Baro-VNAV NA when using Oxnard altimeter setting. When local altimeter setting not received, use Oxnard altimeter setting and increase all DAs/MDAs 100 feet, and increase, LNAV/VNAV visibility Cat C and D ½ mile, LNAV Cat C to RVR 6000, Cat D ¼ mile, Circling Cat A visibility ½ mile, Cat C visibility ½ mile. VDP NA when using Oxnard altimeter setting. Circling Rwy 15R NA at night. Circling NA for Cats C and D north of Rwy 7-25.</div></div>			

ATIS 132.65	SANTA BARBARA APP CON★ 120.55 319.15 (151°-329°) 125.4 291.1 (330°-150°)	SANTA BARBARA TOWER★ 119.7 (CTAF) 0 254.35	GND CON 121.7	CLNC DEL 132.9	UNICOM 122.95
-----------------------	--	---	-------------------------	--------------------------	-------------------------



ECEVA		Procedure Turn NA	4000	CESRA	IYOBE	GOLET
2800						
GP 3.00° TCH 48						
6.3 NM		3.8 NM	1.6 NM			
CATEGORY	A	B	C	D		
LPV DA	380/40			367 (400-¾)		
LNAV/VNAV DA	866-2	853 (900-2)	866-2½ 853 (900-2½)	866-2¾ 853 (900-2¾)		
LNAV MDA	560/24	547 (600-½)	560/50 547 (600-1)	560/60 547 (600-1¼)		
CIRCLING	800-1 786 (800-1)	800-1¼ 786 (800-1¼)	800-2¼ 786 (800-2¼)	1000-3 986 (1000-3)		

OLD

SANTA BARBARA, CALIFORNIA

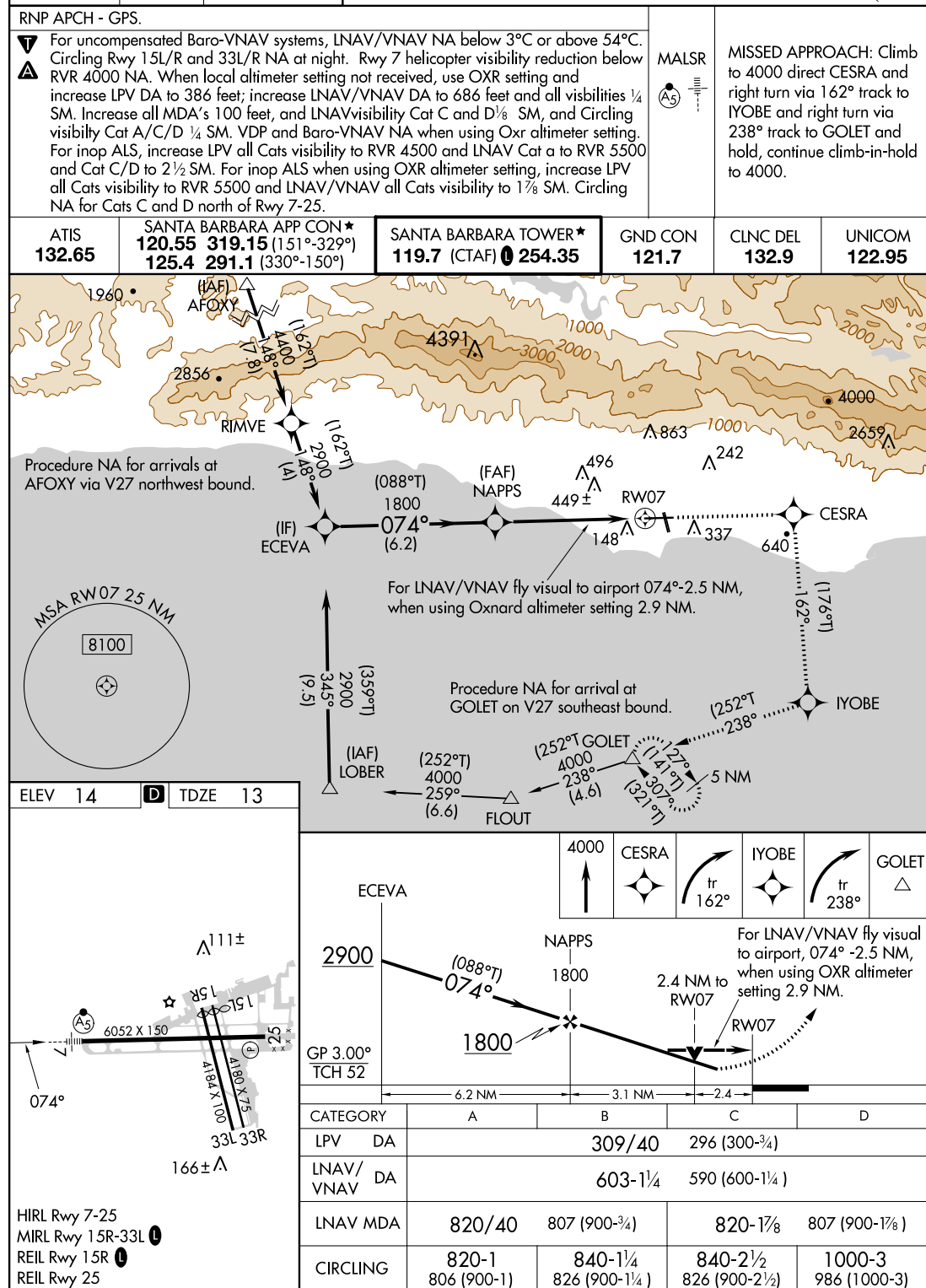
AL-378 (FAA)

FIG

WAAS CH 78306 W07A	APP CRS 074°	Rwy Idg 6052 TDZE 13 Apt Elev 14
--	------------------------	---

RNAV (GPS) RWY 7

SANTA BARBARA MUNI (SBA)



AUTOMATED AL-378 RNAV (GPS) RWY 7
AUTOMATED AL-378 RNAV (GPS) RWY 7

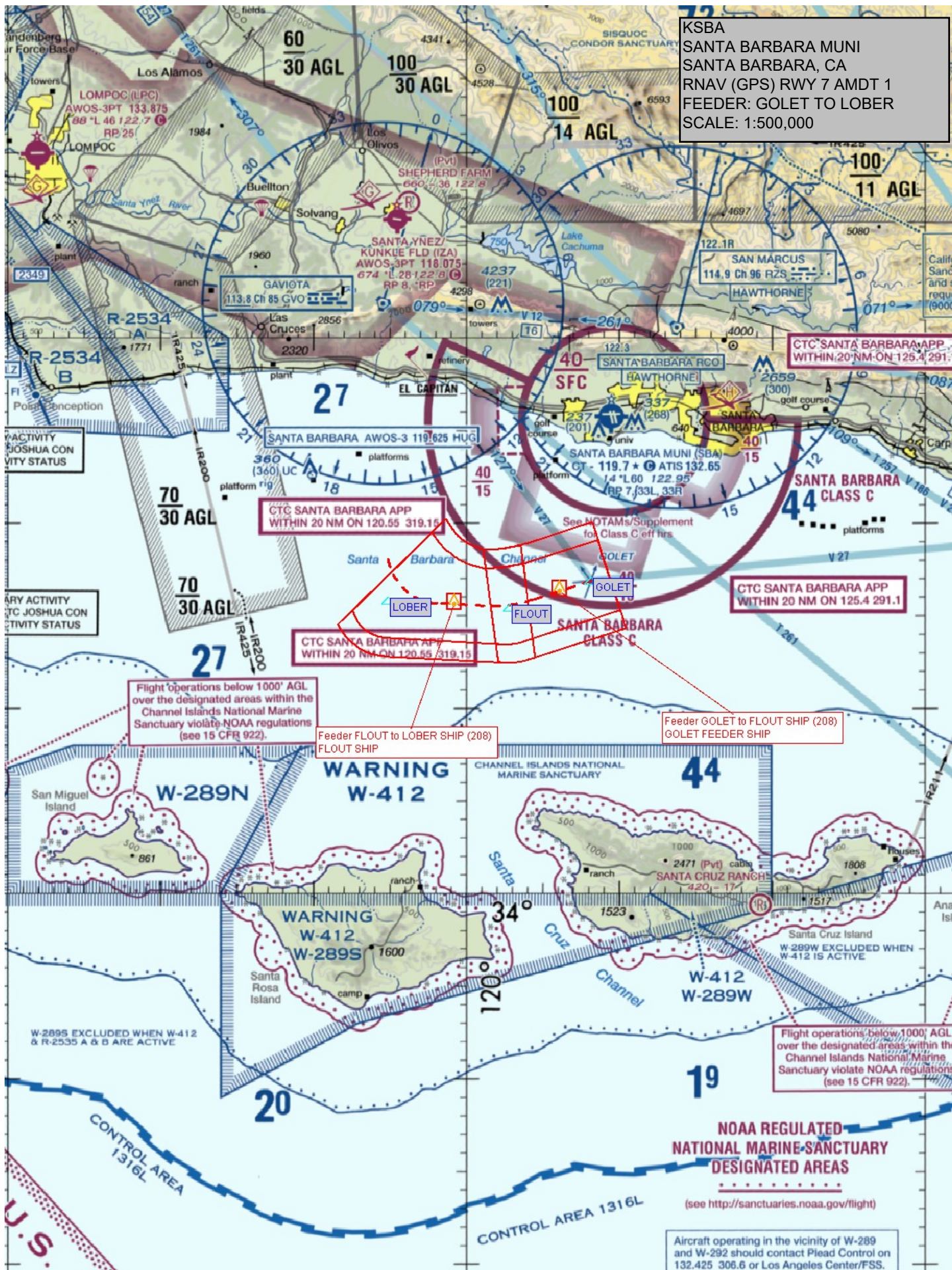
SW-3
7-18-24
COMPILER: JUN
REVIEWER:
DBL CHKR:
EFF: FIG

SANTA BARBARA, CALIFORNIA

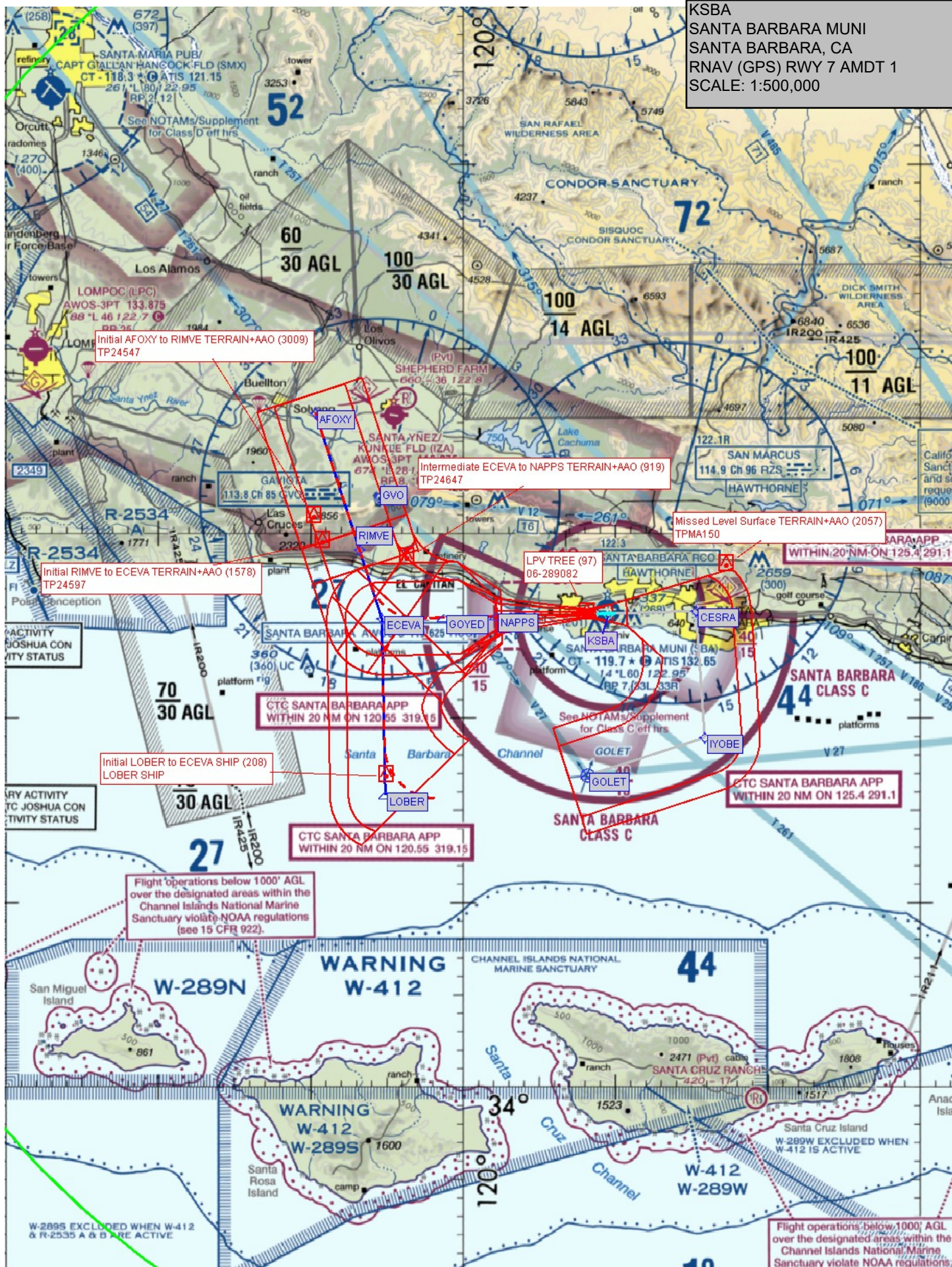
Amdt 1 FIG

34°26'N-119°50'W

SANTA BARBARA MUNI (SBA)
RNAV (GPS) RWY 7



KSBA
SANTA BARBARA MUNI
SANTA BARBARA, CA
RNAV (GPS) RWY 7 AMDT 1
SCALE: 1:500,000



KSBA
SANTA BARBARA MUNI
SANTA BARBARA, CA
RNAV (GPS) RWY 7 AMDT 1
GOLET HOLDING
SCALE: 1:500,000



KSBA
SANTA BARBARA MUNI
SANTA BARBARA, CA
RNAV (GPS) RWY 7 AMDT 1
LPV FINAL/MISSED
SCALE: 1:100,000

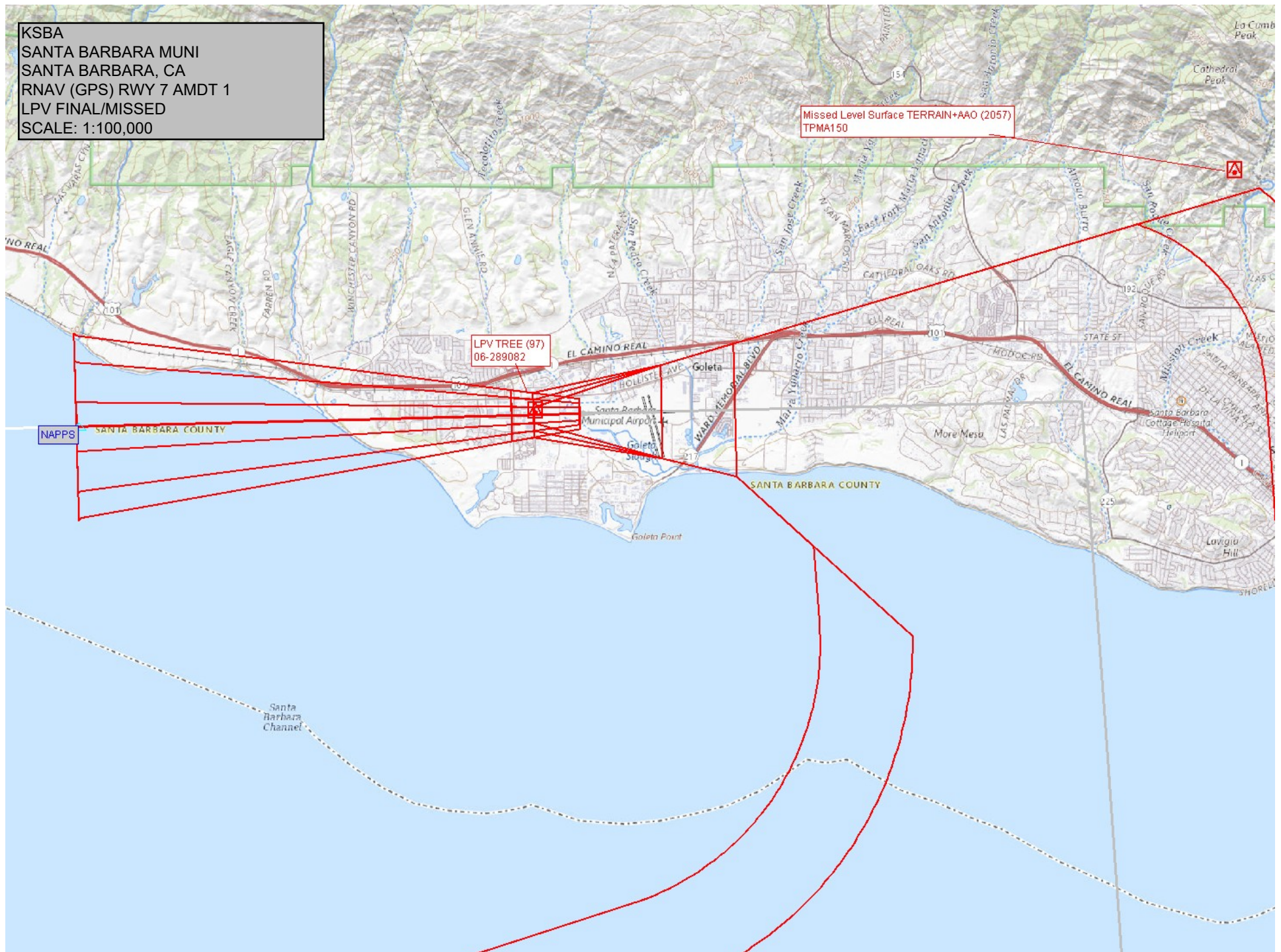
Missed Level Surface TERRAIN+AAO (2057)
TPMA150

LPV TREE (97)
06-289082

NAPPS

SANTA BARBARA COUNTY

SANTA BARBARA COUNTY



KSBA
SANTA BARBARA MUNI
SANTA BARBARA, CA
RNAV (GPS) RWY 7 AMDT 1
LNAV/VNAV FINAL/MISSED
SCALE: 1:100,000

Misled Level Surface TERRAIN+AAO (2057)
TPMA150

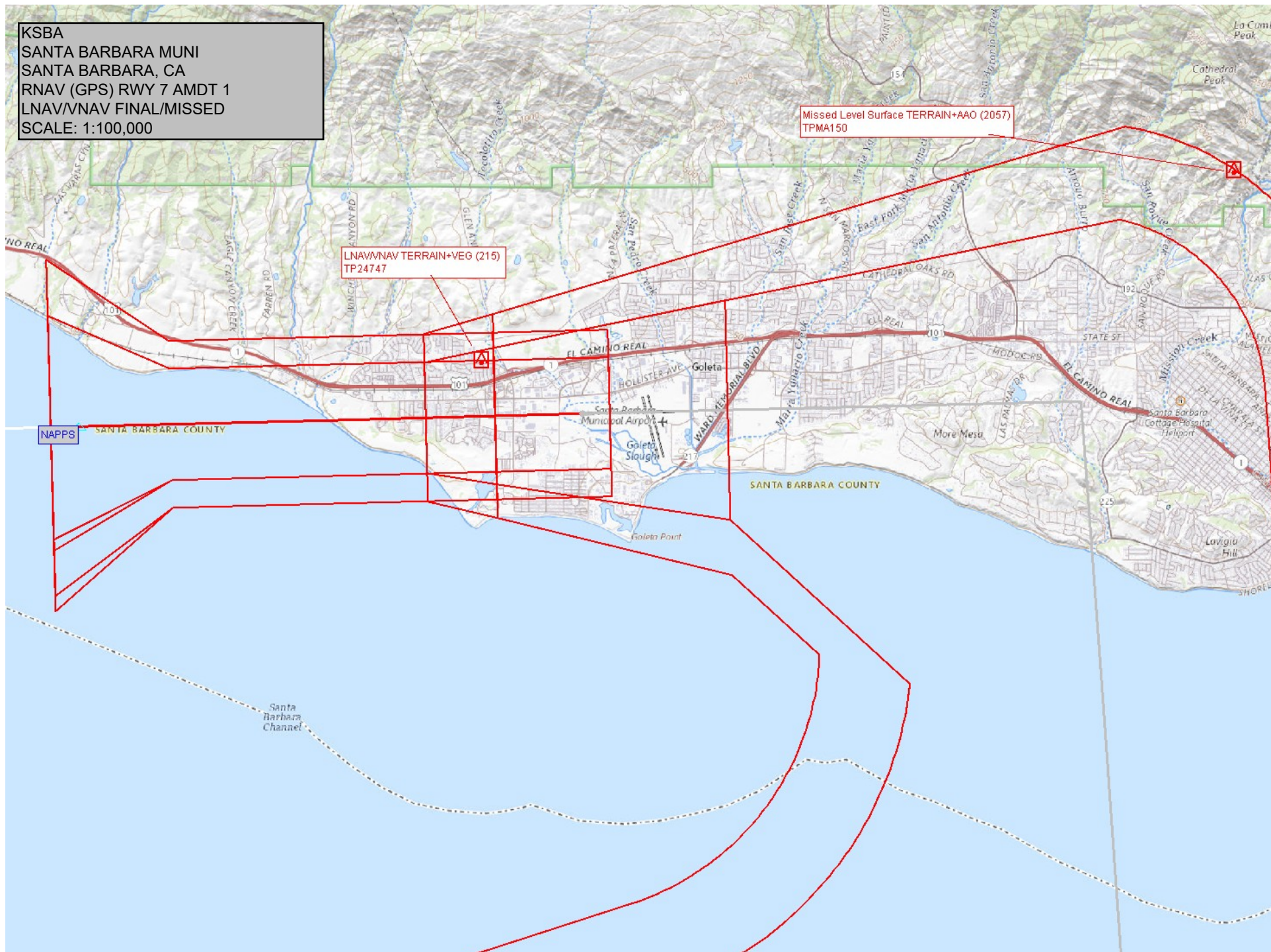
LNAV/VNAV TERRAIN+VEG (215)
TP24747

NAPPS

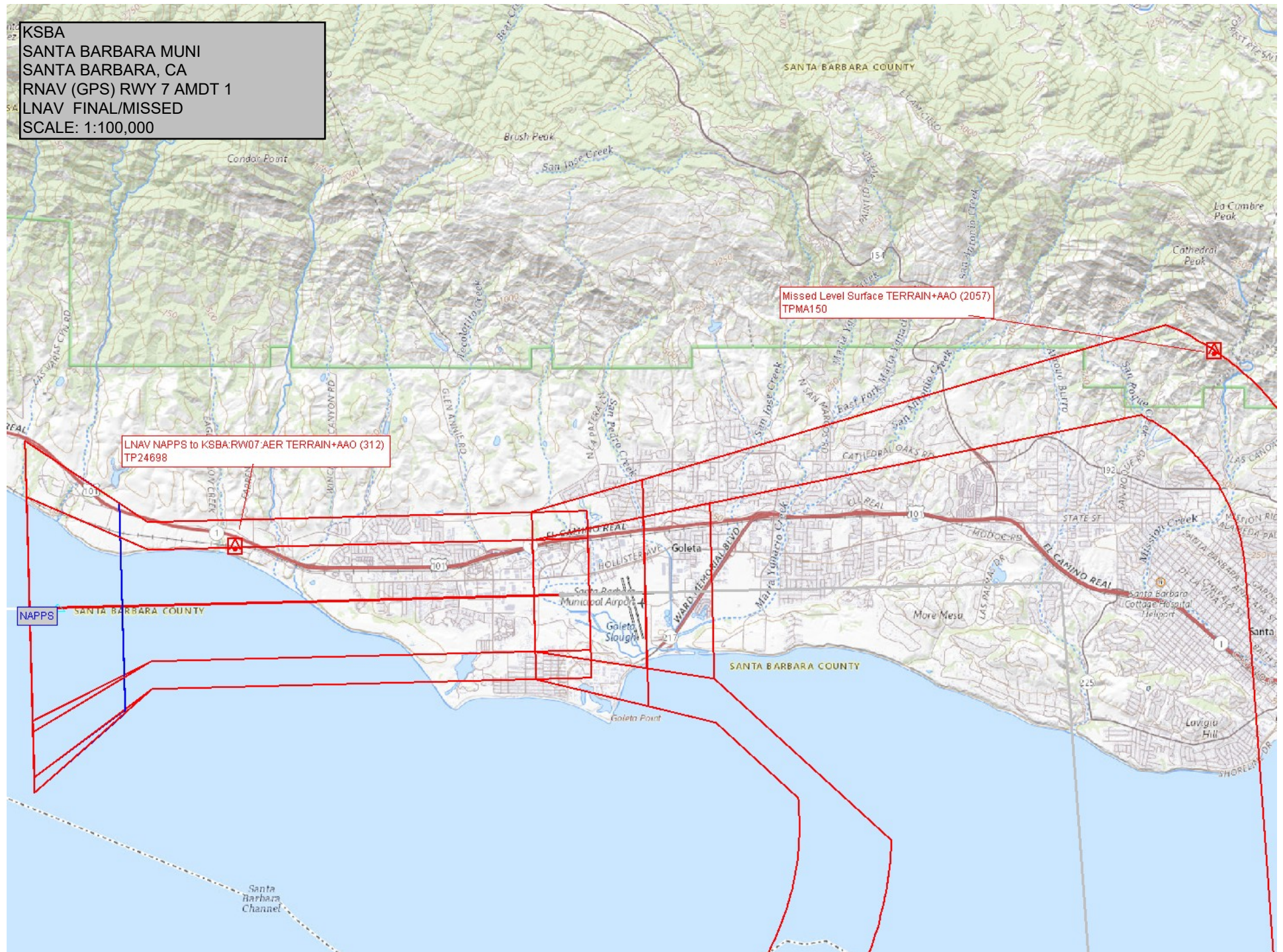
SANTA BARBARA COUNTY

SANTA BARBARA COUNTY

Santa
Barbara
Channel



KSBA
SANTA BARBARA MUNI
SANTA BARBARA, CA
RNAV (GPS) RWY 7 AMDT 1
LNAV FINAL/MISSED
SCALE: 1:100,000



KSBA
SANTA BARBARA MUNI
SANTA BARBARA, CA
RNAV (GPS) RWY 7 AMDT 1
CIRCLING
SCALE: 1:100,000

