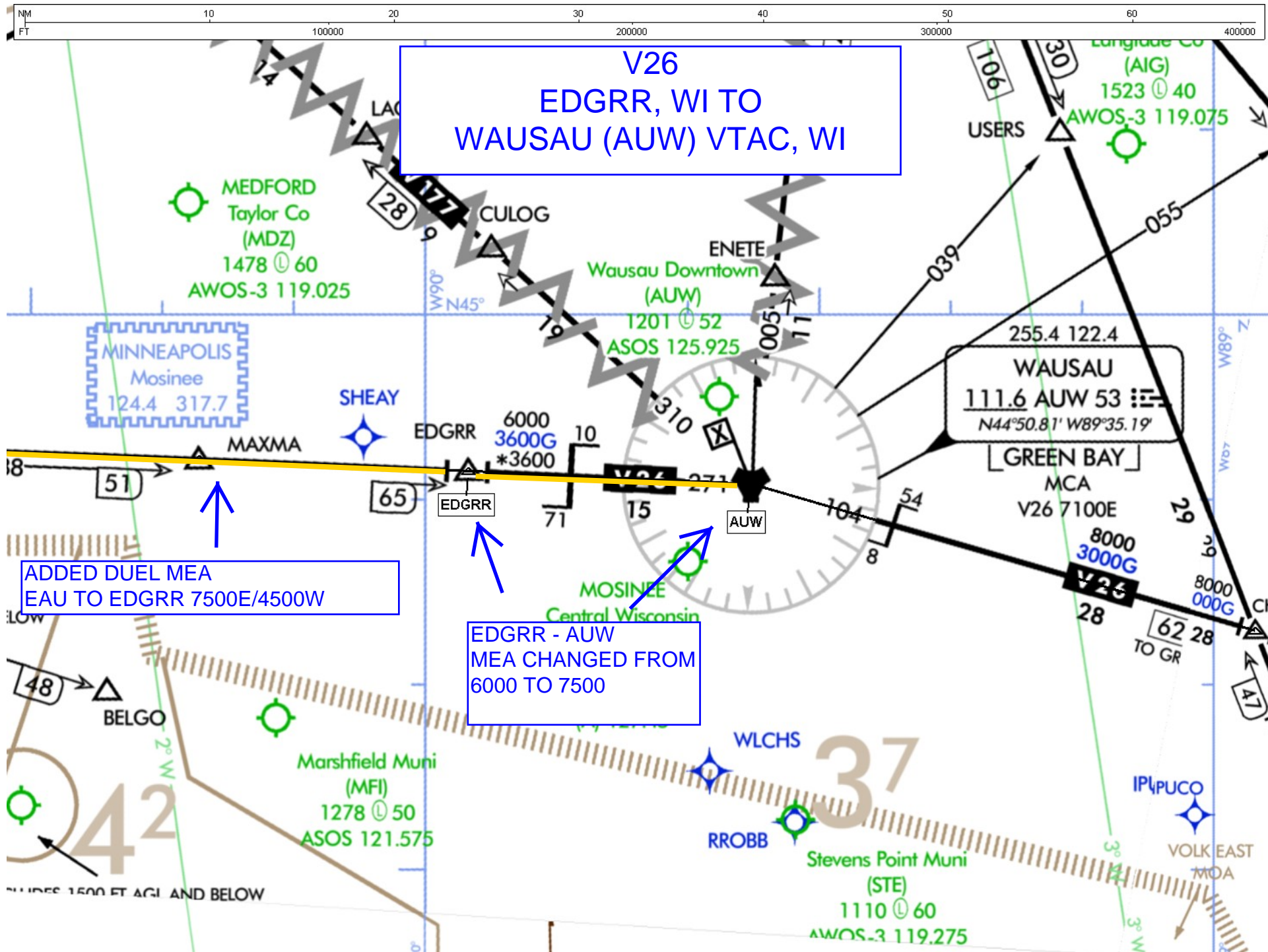


Flight Procedures Cover Page	Task Action: Amendment	Task Type: Segment	Estimated Chart Date: 09/10/2020	APWS Task ID: 228CEB8BE4E94AD0A483AE24EFD42FD3	APWS Project ID: 65CF407E3B4543C4AA65827BE98FADBF
Procedure: V26 EAU VTAC, WI TO CHURP, WI		Enroute: YES	Specialist: Martinelli, Tara		Agreement Number:
Airport ID:	Airport Name:		Airport City:		State:
Facility ID:	Facility Type:	Flight Inspection Remark Type:			
<p>Procedure Comments:</p> <p>AIRWAY STARTING POINT: EAU VORTAC 445351.61N/0912842.73W</p> <p>CANCELS NOTAMS: !FDC 0/3417 AND !FDC 8/5800.</p> <p>FC REVALIDATED EAU R-088 AT 51NM, 66NM AND 71NM ON 12/27/2019.</p> <p>PENDING DATA USED FOR WAUSAU (AUW) - AUW CHANGED FROM VORTAC TO VOR/DME FACILITY.</p> <p>PROCESSED IAW AIRCRAFT OPERATIONS GROUP (AJF-10) MEMO, APR 29, 2020, SUBJECT: FLIGHT INSPECTION REVIEW NOT REQUIRED.</p> <p>CONTACT DON LANIER: AJV-A431 405-954-8242.</p> <div>QUALITY 3 CHECKED</div>					





U.S. Department of Transportation
Federal Aviation Administration

FIDEX Submission: FIDEX-EAU-187251

I. General Information

Name: Ralph Uzzle
Email: ralph.r.uzzle@faa.gov
Phone: 405-996-8475
Submission Date: 01/26/2020
Date of Inspection: 12/27/2019
Aircraft Number: N68
PIC: Paul Armstrong
PIC Email: paul.r.armstrong@faa.gov
Mission Specialist: Ralph Uzzle
Mission Specialist Email: ralph.r.uzzle@faa.gov
Country: United States
State: MN
Submission Type: Expanded Service Volumes (ESV)
Military Owned: NO
Facility Identifier: EAU
Facility Type: VTAC

IV. Expanded Service Volumes (ESV)

Type Change	Component	Service Date	Radial	Distance	Lower Altitude	Upper Altitude	Request Type
CANCEL	VOR	01/27/2017	357	41.0 NM	5,700 FT	17,500 FT	ORIGINAL
PUBLISH	VOR	12/27/2019	357	41.0 NM	5,700 FT	17,500 FT	REVALIDATION
CANCEL	TACAN	01/27/2017	357	41.0 NM	5,700 FT	17,500 FT	ORIGINAL
PUBLISH	TACAN	12/27/2019	357	41.0 NM	5,700 FT	17,500 FT	REVALIDATION
CANCEL	VOR	01/27/2017	357	67.0 NM	8,000 FT	17,500 FT	ORIGINAL
PUBLISH	VOR	12/27/2019	357	67.0 NM	8,000 FT	17,500 FT	REVALIDATION
CANCEL	TACAN	01/27/2017	357	67.0 NM	8,000 FT	17,500 FT	ORIGINAL
PUBLISH	TACAN	12/27/2019	357	67.0 NM	8,000 FT	17,500 FT	REVALIDATION
CANCEL	VOR	07/13/2007	026	48.0 NM	6,000 FT	17,500 FT	ORIGINAL
PUBLISH	VOR	12/27/2019	026	48.0 NM	6,000 FT	17,500 FT	REVALIDATION
CANCEL	TACAN	07/13/2007	026	48.0 NM	6,000 FT	17,500 FT	ORIGINAL
PUBLISH	TACAN	12/27/2019	026	48.0 NM	6,000 FT	17,500 FT	REVALIDATION
CANCEL	VOR	04/30/2008	026	68.0 NM	6,000 FT	17,500 FT	ORIGINAL
PUBLISH	VOR	12/27/2019	026	68.0 NM	6,000 FT	17,500 FT	REVALIDATION
CANCEL	TACAN	04/30/2008	026	68.0 NM	6,000 FT	17,500 FT	ORIGINAL
PUBLISH	TACAN	12/27/2019	026	68.0 NM	6,000 FT	17,500 FT	REVALIDATION
CANCEL	VOR	06/16/2005	058	49.0 NM	3,700 FT	17,500 FT	ORIGINAL
PUBLISH	VOR	12/27/2019	058	49.0 NM	3,700 FT	17,500 FT	REVALIDATION
CANCEL	VOR	04/30/2008	058	96.0 NM	10,000 FT	17,500 FT	ORIGINAL
PUBLISH	VOR	12/27/2019	058	96.0 NM	10,000 FT	17,500 FT	REVALIDATION
CANCEL	TACAN	04/30/2008	058	96.0 NM	10,000 FT	17,500 FT	ORIGINAL
PUBLISH	TACAN	12/27/2019	058	96.0 NM	10,000 FT	17,500 FT	REVALIDATION
CANCEL	VOR	02/26/2008	087	51.0 NM	4,500 FT	17,500 FT	ORIGINAL
PUBLISH	VOR	12/27/2019	088	51.0 NM	4,500 FT	17,500 FT	REVALIDATION
CANCEL	VOR	07/03/2019	087	66.0 NM	4,500 FT	17,500 FT	ORIGINAL
PUBLISH	VOR	12/27/2019	088	66.0 NM	4,500 FT	17,500 FT	REVALIDATION
CANCEL	VOR	07/14/1016	088	71.0 NM	6,000 FT	17,500 FT	ORIGINAL

PUBLISH	VOR	12/27/2019	088	71.0 NM	7,500 FT	17,500 FT	REVALIDATION
CANCEL	TACAN	02/15/2017	088	71.0 NM	6,000 FT	17,500 FT	ORIGINAL
PUBLISH	TACAN	12/27/2019	088	71.0 NM	7,500 FT	17,500 FT	REVALIDATION
CANCEL	VOR	04/30/2008	103	49.0 NM	3,000 FT	18,000 FT	ORIGINAL
PUBLISH	VOR	12/27/2019	103	49.0 NM	4,000 FT	18,000 FT	REVALIDATION
CANCEL	TACAN	04/30/2008	103	49.0 NM	3,000 FT	18,000 FT	ORIGINAL
PUBLISH	TACAN	12/27/2019	103	49.0 NM	4,000 FT	18,000 FT	REVALIDATION