

Flight Procedures Cover Page	Task Action: FLIGHT CHECK	Task Type: Textual DP	Estimated Chart Date: 06/12/2025	APWS Task ID: 2285B47A07E84757BDE3C8A5A0898DAD	APWS Project ID: 0E4E10A2F5E0454185D1771A327C59AA
Procedure: TAKEOFF MINIMUMS AND OBSTACLE DP AMDT 3		Enroute: NO	Specialist: Krueger, Zachary		Agreement Number:
Airport ID: C35			Airport City: REEDSBURG		State: WI
Facility ID:	Facility Type:	Flight Inspection Remark Type: New FC Slot			
<div>Procedure Comments: FULL AMDT COMPLETED USING ACTIVE DATA. CLEAR NOTAM FDC 3/4561 APPROVAL LETTER SUBMITTED FOR CLIMB GRADIENT IN EXCESS OF 500 FT PER NM. CONTACT ROBERT HAMILTON 405-954-4608</div>					

QUALITY
8
CHECKED

FIPC BASIC FORM						
PROCEDURE: TAKEOFF MINIMUMS AND OBSTACLE DP AMDT 3			AIRPORT NAME: REEDSBURG MUNI		AIRPORT ID: KC35	SPECIAL CONTROL NO: BP-03-135-25
FAC ID: KC35		CITY: REEDSBURG			ST: WI	ORIG CHART DATE: 06/12/2025
DFL TYPE: PROC/T	THIRD PARTY: <input type="checkbox"/> YES	EST. TIME ON SITE: 0.4	REIMB. NUMBER:	PTS TASK ID: 2285B47A07E84757BDE3C8A5A0898DAD		
PREFLIGHT NOTES						
REVIEWER: marc webber					DATE: 04/01/2025	
COMMENTS:					CHECK ONE:	
					<input checked="" type="checkbox"/> FLT CK REQ <input type="checkbox"/> NFCR <input type="checkbox"/> REJECT	
						YES
					CPV COMPLETE?	
					X	
PROCEDURE RESULTS						
INSPECTION DATE: 04/01/2025	CREW #: VN424	N #: N75	INSTRUMENT PROCEDURE STATUS: <input checked="" type="checkbox"/> SAT <input type="checkbox"/> SAT W/CHANGES <input type="checkbox"/> UNSAT		ARINC CODING: <input type="checkbox"/> SAT <input type="checkbox"/> SAT/GOLD <input type="checkbox"/> UNSAT	
FLIGHT INSPECTOR SIGNATURE: marc webber @ 04/01/2025 16:31			PRINTED NAME: WEBBER, MARC RAYMOND			NOTAM INITIATED? <input type="checkbox"/> YES <input checked="" type="checkbox"/> NO
FLIGHT INSPECTOR REMARKS:						
IN-FLIGHT OBSTACLE REPORT						
OBSTRUCTION ID #:	COORDINATES OR LOCATION:	GNSS ALTITUDE (MSL):	BAROMETRIC ALTITUDE (MSL):	HEIGHT ABOVE GROUND LEVEL:		

DATE: 1/17/2025

TO: LESLIE H. SMITH, MANAGER, FLIGHT TECHNOLOGIES AND PROCEDURES DIVISION.

THRU: DANNY E. HAMILTON, MANAGER, FLIGHT PROCEDURE IMPLEMENTATION & OVERSIGHT
BRANCH.

FROM: WADE EK TERRELL LEAD, PRODUCTION INTEGRATION TEAM AJV-34

SUBJECT: ACTION: APPROVAL REQUEST.

TAKE OFF MINIMUMS AND OBSTACLE DEPARTURE PROCEDURE (ODP) RWY 18, REEDSBURG
MUNICIPAL, REEDSBURG, WI (KC35)

CLIMB GRADIENT EXCEEDS 500 FEET PER NM, 8260.46J, 2-1-D(2).

A "1256" MSL SURVEYED TREE IN THE ICA REQUIRES A CLIMB IN EXCESS OF 500FT PER NM.
BECAUSE OF THE LOCATION OF THE OBSTACLE IN THE ICA A DEPARTURE ROUTE TO AVOID IT CAN
NOT BE CONSTRUCTED. AN ADDITIONAL OBSTACLE OUTSIDE THE ICA, NECESSITATES THE
DEVELOPMENT OF A VISUAL CLIMB OVER THE AIRPORT. (VCOA)

RWY 18/36 IS 4840 FEET LONG. THE AIRPORT IS USED PRIMARILY BY SINGLE ENGINE PROPELLER
AIRCRAFT. FAA FORM 5010 FOR THE AIRPORT LISTS 16 SINGLE ENGINE AND 4 MULTI-ENGINE
AIRCRAFT BASED THERE.

REQUEST APPROVAL TO PUBLISH THE FOLLOWING MINIMUMS: RWY 18: 400-1 5/8 WITH
MINIMUM CLIMB OF 225 FT/NM TO 1400 OR STANDARD WITH MINIMUM CLIMB OF 516 FT/NM TO
1400, OR 1000-3 FOR VCOA.



TAKE-OFF MINIMUMS AND (OBSTACLE) DEPARTURE PROCEDURES

12096

REEDSBURG, WI

REEDSBURG MUNI (C35)

AMDT 2 12096 (FAA)

TAKE-OFF MINIMUMS: **Rwys 7, 25**, NA-obstacles.

Rwy 18, std. w/min. climb of 505' per NM to 1400 or 400-1 1/4 w/min. climb of 215' per NM to 2000 or 800-2 1/2, for climb in visual conditions. **Rwy 36**, 400-2 or std. w/min. climb of 300' per NM to 1400.

DEPARTURE PROCEDURE: **Rwy 18**, for climb in visual conditions: cross Reedsburg Muni Airport at or above 1600 MSL before proceeding on course. When executing VCOA, notify ATC prior to departure.

NOTE: **Rwy 18**, trees beginning 22' from DER, 6' right of centerline, up to 88' AGL/1031' MSL. Train and railroad tracks 99' from DER, right to left of centerline, 23' AGL/900' MSL. Terrain beginning 286' from DER, 83' right of centerline, 1033' MSL. Vehicles on road 571' from DER, right to left of centerline, 15' AGL/1033' MSL. T-L tower 3633' from DER, right to left of centerline, up to 80' AGL/1009' MSL. Trees beginning 27' from DER, 6' left of centerline, up to 89' AGL/1032' MSL. Pole 3842' from DER, 39' left of centerline, up to 76' AGL/997' MSL. Terrain beginning 5518' from DER, 14' left of centerline, 1033' MSL. **Rwy 36**, vertical structures beginning 23' from DER, 62' right and left of centerline, up to 21' AGL/942' MSL. Vehicle on road 44' from DER, left to right of centerline, 15' AGL/962' MSL. Buildings beginning 79' from DER, 5' right of centerline, up to 29' AGL/1050' MSL. Trees beginning 100' from DER, 12' right of centerline, up to 40' AGL/1041' MSL. Fences beginning 121' from DER, right and left of centerline, up to 24' AGL/925' MSL. Signs beginning 196' from DER, left and right of centerline, up to 38' AGL/939' MSL. Parking lot 198' from DER, 295' right of centerline, 13' AGL/914' MSL. Poles beginning 204' from DER, right and left of centerline, up to 102' AGL/1043' MSL. Light support structures beginning 291' from DER, left and right of centerline, up to 44' AGL/945' MSL. Buildings beginning 328' from DER, 107' left of centerline, up to 55' AGL/976' MSL. Terrain beginning 397' from DER, 176' right of centerline, up to 915' MSL. Flag poles 825' from DER, 158' left of centerline, up to 37' AGL/978' MSL. Trees beginning 1032' from DER, 28' left of centerline, up to 40' AGL/1041' MSL.

RHINELANDER, WI

RHINELANDER-ONEIDA COUNTY (RHI)

AMDT 4 10098 (FAA)

TAKE-OFF MINIMUMS: **Rwy 9**, std. w/min. climb of 230' per NM to 3900 before turning, or 900-2 1/2 for climb in visual conditions.

DEPARTURE PROCEDURE: **Rwy 9**, for climb in visual conditions: cross Rhinelander-Oneida County airport at or above 2400 before proceeding on course.

NOTE: **Rwy 9**, tree 3101' from DER, 1084' right of centerline, 61' AGL/1686' MSL. Tree 3117' from DER, 1194' left of centerline, 67' AGL/1685' MSL. **Rwy 15**, multiple trees beginning 624' from DER, 283' right of centerline, up to 63' AGL/1684' MSL. Multiple trees beginning 663' from DER, 376' left of centerline, up to 52' AGL/1660' MSL. Fence beginning 62' from DER, 482' left of centerline, up to 13' AGL/1625' MSL. Pole 729' from DER, 449' right of centerline, 22' AGL/1634' MSL. **Rwy 33**, multiple trees beginning 890' from DER, 234' right of centerline, up to 98' AGL/1709' MSL. Multiple trees beginning 187' from DER, 106' left of centerline, up to 83' AGL/1678' MSL. Poles beginning 1755' from DER, 297' right of centerline, up to 80' AGL/1691' MSL. Poles beginning 866' from DER, 106' left of centerline, up to 74' AGL/1669' MSL.

RICE LAKE, WI

RICE LAKE RGNL-CARL'S FIELD (RPD)

ORIG 05132 (FAA)

TAKE-OFF MINIMUMS: of 231' per NM to 2200, conditions.

DEPARTURE PROCEDURE:

visual conditions: Cross at or above 2300. **Rwy 31**, climb via heading 310° to 1900 before turning left.

NOTE: **Rwy 13**, trees 1550' from departure end of runway, 200' right of centerline, 67' AGL/1167' MSL. **Rwy 19**, trees 2780' from departure end of runway, 200' left of centerline, 73' AGL/1169' MSL. **Rwy 31**, trees 1480' from departure end of runway, 50' right of centerline, 64' AGL/1156' MSL.

RICHLAND CENTER, WI

RICHLAND (93C)

AMDT 1A 07241 (FAA)

TAKE-OFF MINIMUMS: **Rwys 9, 17**, NA. **Rwy 27**, 400-2 or std. with a min. climb of 491' per NM to 1300. **Rwy 35**, 300-1 or std. with a min. climb of 222' per NM to 1800.

ROBINSON, IL

CRAWFORD CO (RSV)

ORIG 08269 (FAA)

NOTE: **Rwy 9**, trees 2285' from departure end of runway, 474' right of centerline, 60' AGL/516' MSL. Trees 971' from departure end of runway, 594' left of centerline, 58' AGL/517' MSL. **Rwy 17**, tree 2493' from departure end of runway, 521' right of centerline, 100' AGL/589' MSL. **Rwy 27**, trees beginning at 178' from departure end of runway, 358' right of centerline, up to 78' AGL/547' MSL. Trees beginning at 2190' from departure end of runway, 89' left of centerline, 98' AGL/567' MSL. **Rwy 35**, road with vehicle 693' from departure end of runway, 611' right of centerline, 15' AGL/474' MSL. Tree 1545' from departure end of runway, 841' left of centerline, 100' AGL/554' MSL.

ROCHELLE, IL

ROCHELLE MUNI AIRPORT-KORITZ FIELD (RPJ)

AMDT 3 03191 (FAA)

TAKE-OFF MINIMUMS: **Rwy 7**, 800-1 or std. with a min. climb of 433' per NM to 1800.

NOTE: **Rwy 7**, tower 3415' from departure end of runway, 1135' right of centerline, 120' AGL/924' MSL. Tower, 3.66 NM from departure end of runway, 2020' left of centerline, 625' AGL/1463' MSL.

ST. JACOB, IL

ST LOUIS METRO-EAST/ SHAFER FIELD (3K6)

ORIG 87155 (FAA)

TAKE-OFF MINIMUMS: **Rwy 13**, 300-1.

SALEM, IL

SALEM-LECKRONE (SLO)

AMDT 6 01193 (FAA)

TAKE-OFF MINIMUMS: **Rwy 18**, 300-2 or std. with a min. climb of 280' per NM to 900.

05 APR 2012 to 03 MAY 2012

05 APR 2012 to 03 MAY 2012

12096

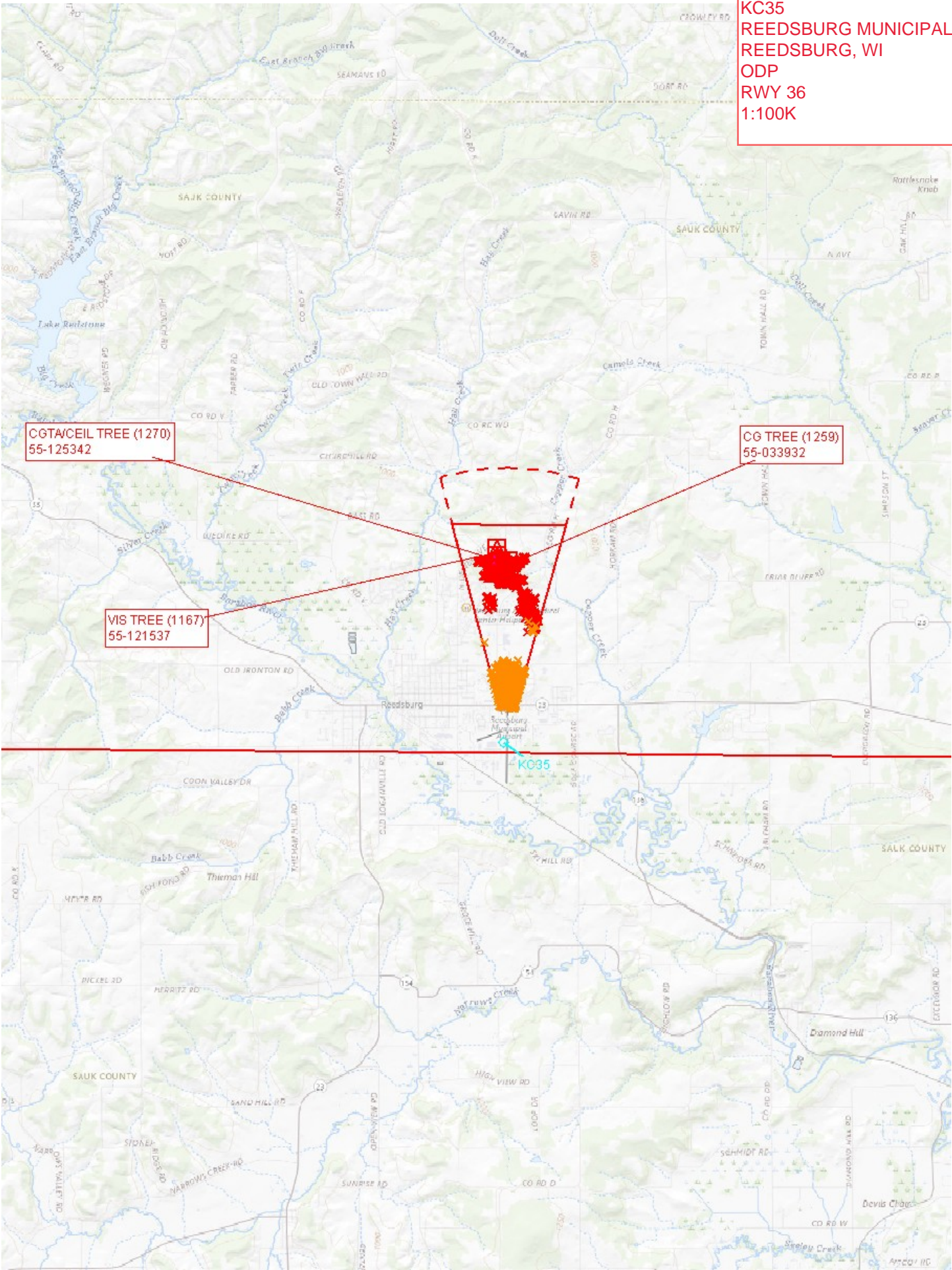


TAKE-OFF MINIMUMS AND (OBSTACLE) DEPARTURE PROCEDURES

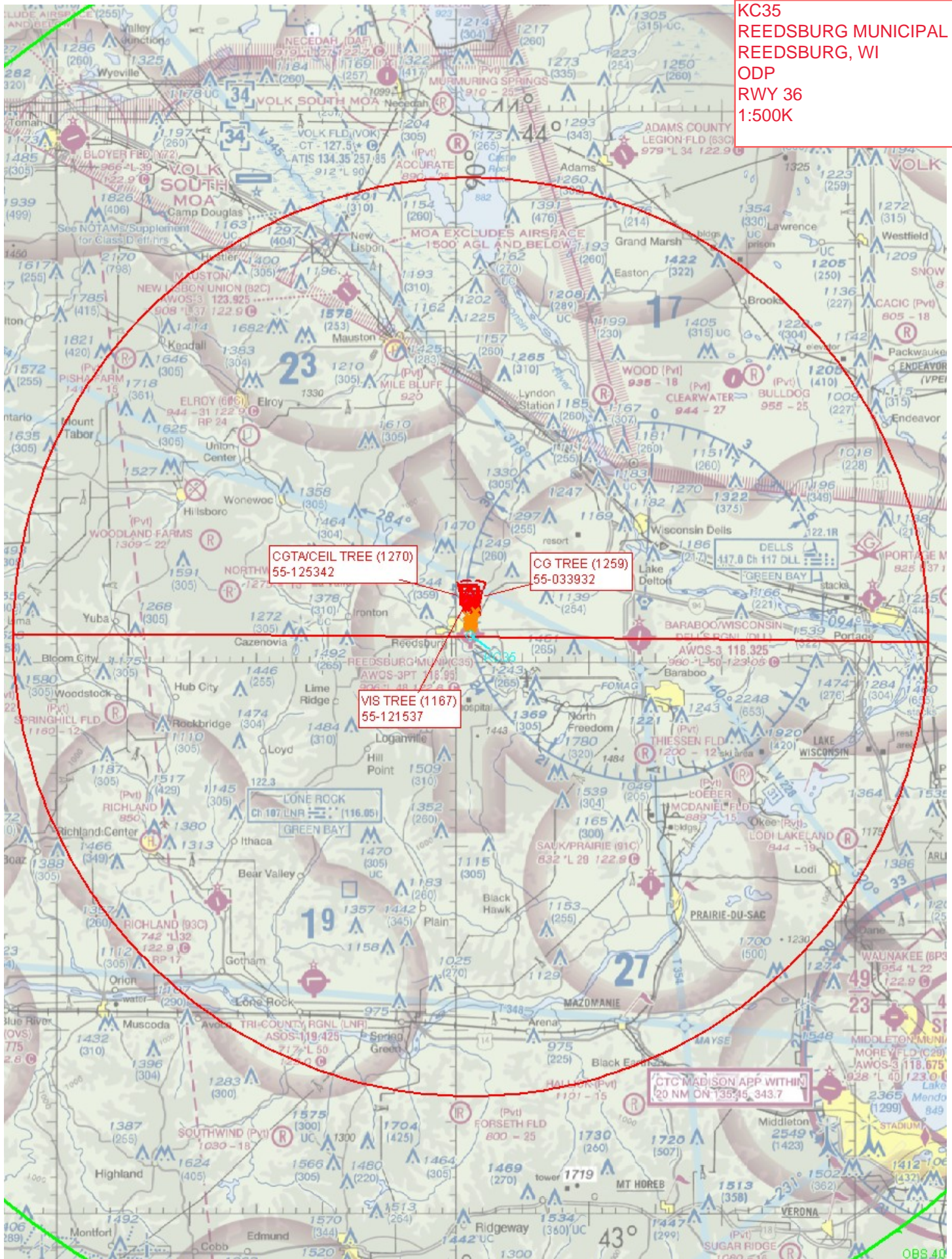
L20

EC-3

KC35
REEDSBURG MUNICIPAL
REEDSBURG, WI
ODP
RWY 36
1:100K



KC35
REEDSBURG MUNICIPAL
REEDSBURG, WI
ODP
RWY 36
1:500K



KC35
REEDSBURG MUNICIPAL
REEDSBURG, WI
ODP
RWY 18 225 TO 1400
1:100K

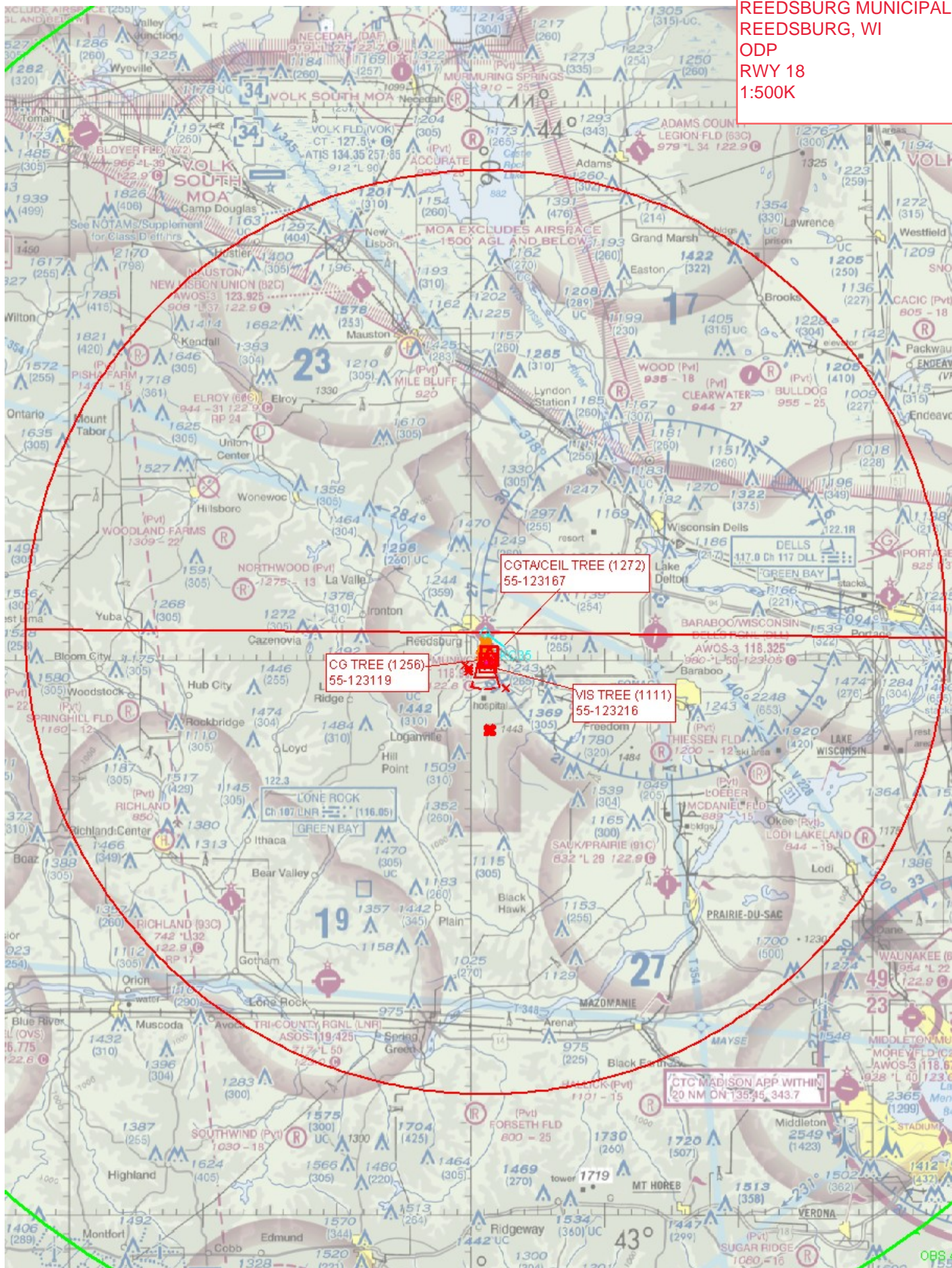
CGTA/CEIL TREE (1272)
55-123167

KC35

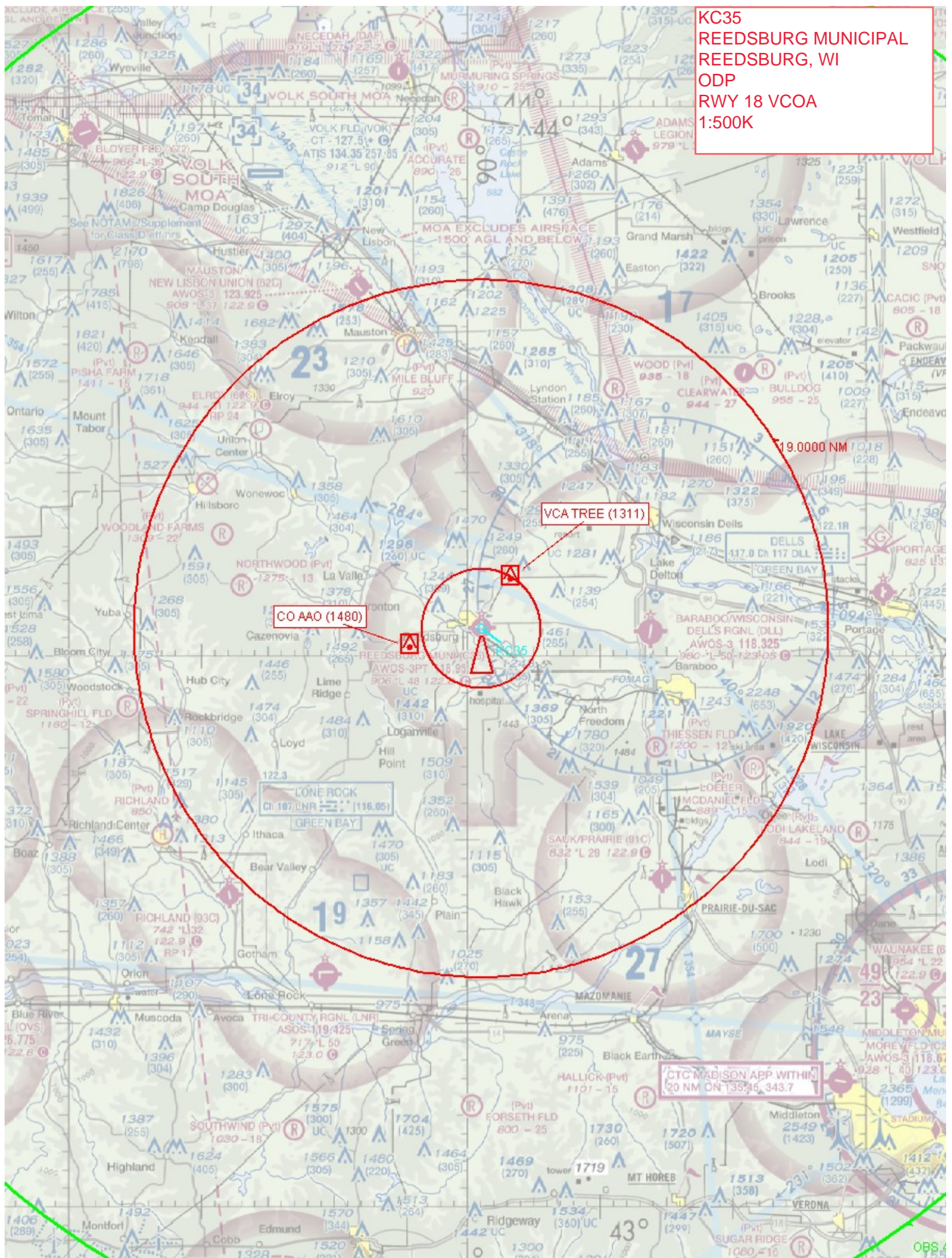
CG TREE (1256)
55-123119

VIS TREE (1111)
55-123216

KC35
REEDSBURG MUNICIPAL
REEDSBURG, WI
ODP
RWY 18
1:500K



WC35
REEDSBURG MUNICIPAL
REEDSBURG, WI
ODP
RWY 18 VCOA
1:500K





Federal Aviation Administration

Memorandum

Date:

To: Manager, Production Integration Team, AJV-341

From: Manager, Flight Technologies and Procedures Division, AFS-400

Prepared by: Flight Procedure Implementation & Oversight Branch, AFS-460

Subject: Approval Request; AJV-341 Memorandum Dated 12/23/2011

Robert Ruiz

Signed By: Robert Ruiz

Thu Jan 26 2012 14:33:46 GMT-0500 (Eastern Standard Time)

SIGN HERE

Your request to utilize a climb gradient of 505 feet per Nautical Mile (NM) for RWY 18 on the "TAKEOFF MINIMUMS AND OBSTACLE DEPARTURE PROCEDURES (ODP), AMDT 2" at Reedsburg Muni, Reedsburg, WI was discussed at Flight Standards' Procedure Review Board (PRB) on 01/19/2012 and is approved.

Please direct all inquiries to Danny E. Hamilton, AFS-460, at (405) 954-9359.

Attachments

cc:

AJV-341

AGL-220

AFS-400/410/420/440/460/470

INFORMATION ONLY