

DME DME Assessment Results for CUURT1 path ACORI_BULZI

Results Summary

Flyability:	Completed
DME/DME:	Completed - No Critical DMEs
Name:	Miles CTR Carpenter
Project File:	C:\Users\Miles CTR Carpenter\Desktop\KOPF STARS\KOPF CUURT1 STAR\KOPF CUURT1 STAR DME 20220726.tgs
Output File:	C:\Users\Miles CTR Carpenter\Desktop\KOPF STARS\KOPF CUURT1 STAR\KOPF CUURT1 STAR DME\KOPF [IFPA] CUURT1 20220726_1559 EDT\ACORI_BULZI\KOPF CUURT1 RNAV STAR ACORI BULZI 20220726_1559 EDT.pdf
Procedure Name:	CUURT1
Software: DmeDmePlugin:	6.5.1
Date/Time:	07/26/2022 15:59 EDT
Databases:	DTED MAX

Failures

No Failures

Warnings

No Warnings

Informational

No Informational

Notes For Flight Check

None

Flight Plan

Name	Type	Lat/Lon	Altitude (ft)	VNAV Mode	Ground Speed (kts)	Turn Type	Leg Type
ACORI	WP	N31° 46' 23.360", W085° 51' 29.510"	18000	VNAV	280	FLY_BY	TF
BULZI	WP	N30° 22' 24.930", W084° 04' 34.470"	18000	VNAV	280	FLY_BY	TF

Flyability

Flight Type:	RNAV_STAR
Selected Airport:	KOPF [IFPA]
Climb Gradient:	None assigned
Speeds:	200 Ground Speed to 11000 FT
	240 Ground Speed to 18000 FT
	260 Ground Speed to 24000 FT
	340 Ground Speed above 24000 FT
Descent During a Turn:	Allowed
VNAV Mode:	Flight Plan

DME DME Assessment Results for CUURT1 path ACORI_BULZI

DME/DME	
RNP:	RNP 2
Flight Mode:	Manual
Line of Sight (DTED Level 0 Max):	Evaluated
Inertial Drift:	Enabled
Initial Drift:	0.558 NM
INS Drift Rate:	8.0 NM/Hour
Range Mode:	OSV
RNP Edges:	Evaluated
Min DME Range:	3.0 NM
DME Types:	DME, VOR-DME, VORTAC
DME Include Angles:	30 to 150
Critical DMEs:	Not Allowed
DoD Facilities:	Not included
Foreign Facilities:	Included
High DMEs:	Included
Low DMEs:	Included
Terminal DMEs:	Included
Flight Check DMEs:	Not selected
Higher Altitudes:	Not Evaluated
Near Maximum Altitude:	Not Evaluated
Automatic ESVs:	Not enabled
Disabled DMEs:	ZFP,ZQA,ZTC

DME/DME (Continued)										
DMEs Used										
#	Name	Lat/Lon	MAGVAR	Range	Type	Source	Critical	Status	Time	Distance
1	TAY	N30° 30' 16.696", W082° 33' 10.452"	3.0 W	130	H	IFPA	NO	Enabled	20.1 %	20.1 %
2	LGC	N33° 02' 56.828", W085° 12' 22.397"	1.0 E	130	H	IFPA	NO	Enabled	23.3 %	23.3 %
3	OZR	N31° 16' 08.215", W085° 43' 34.725"	3.0 W	40	L	IFPA	NO	Enabled	47.3 %	47.3 %
4	EUF	N31° 57' 00.903", W085° 07' 49.726"	2.0 E	40	L	IFPA	NO	Enabled	25.1 %	25.1 %
5	OTK	N30° 46' 49.599", W083° 16' 47.024"	2.0 W	130	H	IFPA	NO	Enabled	59 %	59 %
6	MGM	N32° 13' 20.214", W086° 19' 11.018"	3.0 E	130	H	IFPA	NO	Enabled	87.7 %	87.7 %
7	GEF	N30° 33' 04.830", W083° 46' 59.278"	1.0 E	40	L	IFPA	NO	Enabled	23.7 %	23.7 %
8	RRS	N31° 17' 04.514", W085° 25' 52.355"	2.0 E	40	L	IFPA	NO	Enabled	59.8 %	59.8 %
9	CEW	N30° 49' 34.226", W086° 40' 44.916"	3.0 E	130	H	IFPA	NO	Enabled	59 %	59 %
10	MAI	N30° 47' 10.305", W085° 07' 28.081"	0.0 E	40	L	IFPA	NO	Enabled	53.2 %	53.2 %
11	AMG	N31° 32' 11.598", W082° 30' 29.120"	0.0 E	130	H	IFPA	NO	Enabled	40.2 %	40.2 %
12	SZW	N30° 33' 22.418", W084° 22' 26.192"	2.0 E	130	H	IFPA	NO	Enabled	88.3 %	88.3 %
13	ZFP	N26° 33' 19.250", W078° 41' 52.250"	3.0 W	130	H	IFPA	NO	Disabled		
14	ZQA	N25° 01' 31.800", W077° 26' 47.100"	6.0 W	130	H	IFPA	NO	Disabled		
15	ZTC	N26° 44' 05.000", W077° 22' 45.000"	5.0 W	130	H	IFPA	NO	Disabled		

DME DME Assessment Results for CUURT1 path ACORI_BULZI

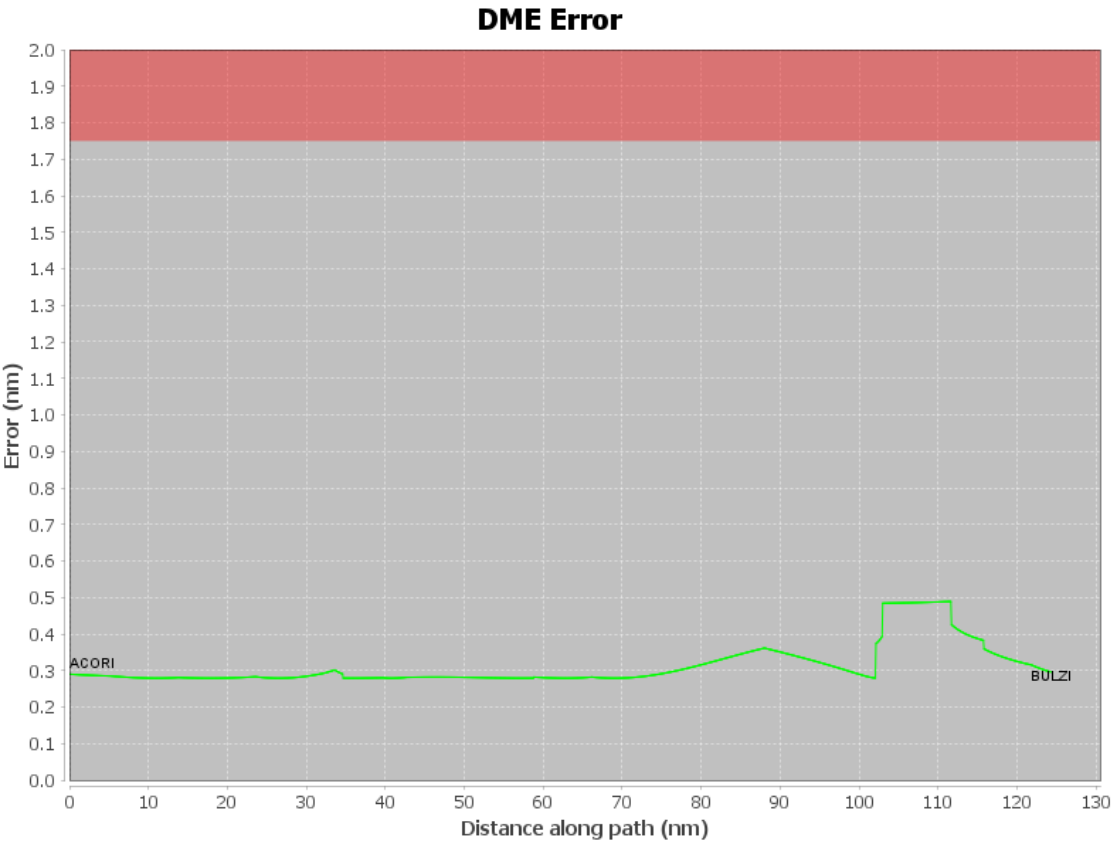
Flight Check DME Selection						
Distance [NM]	Selected DMEs					Alternate
0.0	MGM	CEW	RRS	LGC	OZR	
29.0	MGM	OZR	EUF	SZW	CEW	RRS
36.0	OZR	MAI	RRS	SZW	MGM	CEW
58.8	RRS	MAI	SZW	OTK	CEW	MGM
64.2	RRS	MAI	SZW	OTK	CEW	
73.5	SZW	MAI	RRS	OTK		
74.4	SZW	MAI	MGM	AMG	OTK	
100.8	SZW	OTK	AMG	MGM	GEF	TAY
103.0	AMG	MGM	OTK	GEF	TAY	
119.3	SZW	OTK	GEF	AMG	TAY	

Inertial Drift Segments			
#	Start Location	End Location	Length [NM]

Available DMEs by Waypoints			
Waypoint Before	Waypoint After	DME List	Suggested DMEs
ACORI	BULZI	SZW, MGM, RRS, CEW, MAI, OZR, EUF, OTK, LGC, GEF, AMG, TAY	

User Data Files								
#	File Name							
1	UserDMEsKMIA [IFPA] FROGZ4 RNAV STAR_20220512_0830 EDT.udt							
User DMEs								
#	Name	Lat/Lon	MAGVAR	Range	Elevation [ft]	Frequency	Replaces	Status
1	UDT ESV AMG AMG [IFPA]	N31° 32' 11.598", W082° 30' 29.120"	0.0 E	130	193.5	115.1	UDT ESV AMG	
ESV:		Bearing [True]: 170.0 to 350.0 Bearing [Mag]: 170.0 to 350.0				Arc Distance: Out to 155.0 NM Altitude: 18000.0 to 45000.0 ft		
2	DHP FAA 955265-65 DHP [IFPA]	N25° 47' 59.866", W080° 20' 56.526"	4.0 W	130	5.9	113.9	DHP FAA 955265-65	
ESV:		Bearing [True]: 238.0 to 292.0 Bearing [Mag]: 242.0 to 296.0				Arc Distance: Out to 85.0 NM Altitude: 5900.0 to 14600.0 ft		
3	RSW FAA 191354-15 RSW [IFPA]	N26° 31' 47.551", W081° 46' 32.764"	2.0 W	40	25	114.15	RSW FAA 191354-15	
ESV:		Bearing [True]: 293.0 to 313.0 Bearing [Mag]: 295.0 to 315.0				Arc Distance: Out to 130.0 NM Altitude: 12800.0 to 18000.0 ft		
4	PHK FAA 900991-43 PHK [IFPA]	N26° 46' 57.873", W080° 41' 29.157"	0.0 E	130	15.5	115.4	PHK FAA 900991-43	
ESV:		Bearing [True]: 143.0 to 238.0 Bearing [Mag]: 143.0 to 238.0				Arc Distance: Out to 55.0 NM Altitude: 3000.0 to 16000.0 ft		
5	UDT ESV PHK PHK [IFPA]	N26° 46' 57.873", W080° 41' 29.157"	0.0 E	130	15.5	115.4	UDT ESV PHK	
ESV:		Bearing [True]: 216.0 to 232.0 Bearing [Mag]: 216.0 to 232.0				Arc Distance: Out to 83.0 NM Altitude: 8900.0 to 14600.0 ft		
6	UDT ESV MGM MGM [IFPA]	N32° 13' 20.214", W086° 19' 11.018"	3.0 E	130	271	112.1	UDT ESV MGM	
ESV:		Bearing [True]: 108.0 to 248.0 Bearing [Mag]: 105.0 to 245.0				Arc Distance: Out to 155.0 NM Altitude: 18000.0 to 33000.0 ft		

DME DME Assessment Results for CUURT1 path ACORI_BULZI



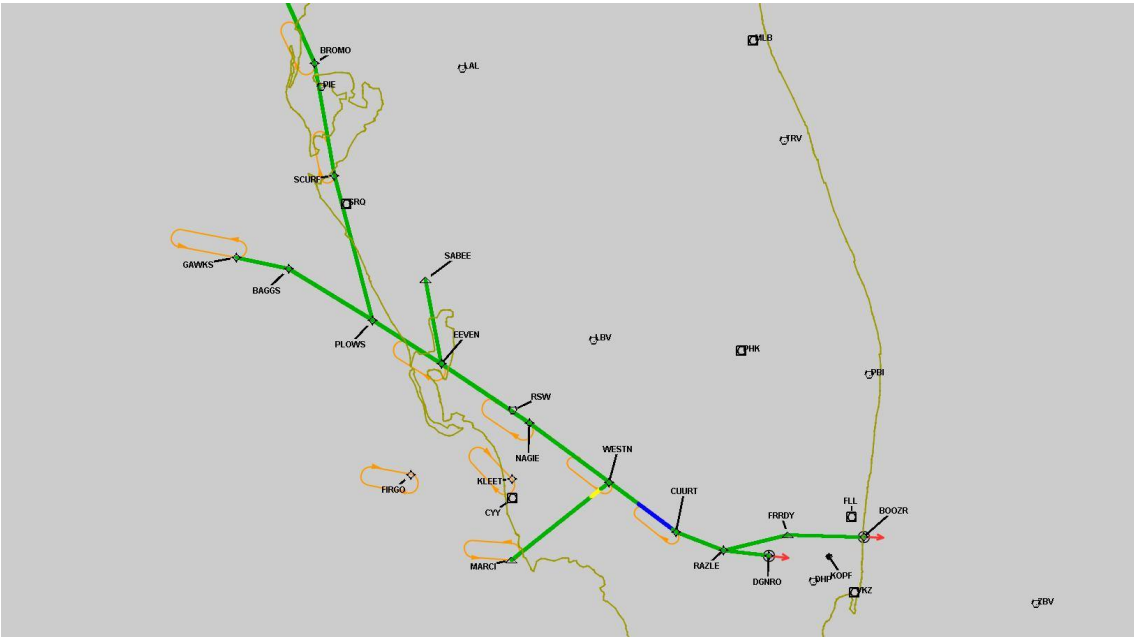
DME DME Assessment Results for CUURT1 path ACORI_BULZI

Graphic Depiction 1



DME DME Assessment Results for CUURT1 path ACORI_BULZI

Graphic Depiction 2



DME DME Assessment Results for CUURT1 path DEFUN_BOOZR

Results Summary

Flyability:	Completed
DME/DME:	Completed - No Critical DMEs
Name:	Miles CTR Carpenter
Project File:	C:\Users\Miles CTR Carpenter\Desktop\KOPF STARS\KOPF CUURT1 STAR\KOPF CUURT1 STAR DME 20220726.tgs
Output File:	C:\Users\Miles CTR Carpenter\Desktop\KOPF STARS\KOPF CUURT1 STAR\KOPF CUURT1 STAR DME\KOPF [IFPA] CUURT1 20220726_1559 EDT\DEFUN_BOOZR\KOPF CUURT1 RNAV STAR DEFUN BOOZR 20220726_1559 EDT.pdf
Procedure Name:	CUURT1
Software: DmeDmePlugin:	6.5.1
Date/Time:	07/26/2022 15:59 EDT
Databases:	DTED MAX

Failures

No Failures

Warnings

No Warnings

Informational

No Informational

Notes For Flight Check

None

Flight Plan

Name	Type	Lat/Lon	Altitude (ft)	VNAV Mode	Ground Speed (kts)	Turn Type	Leg Type
DEFUN	WP	N30° 48' 51.270", W086° 07' 53.090"	18000	VNAV	280	FLY_BY	TF
CABLO	WP	N30° 46' 29.000", W084° 50' 24.000"	18000	VNAV	280	FLY_BY	TF
BULZI	WP	N30° 22' 24.930", W084° 04' 34.470"	18000	VNAV	280	FLY_BY	TF
SNAPY	WP	N29° 48' 51.170", W083° 42' 23.610"	18000	VNAV	280	FLY_BY	TF
NICKI	WP	N29° 15' 20.190", W083° 20' 31.800"	18000	VNAV	280	FLY_BY	TF
BROMO	WP	N28° 00' 38.280", W082° 43' 02.490"	18000	VNAV	280	FLY_BY	TF
SCURF	WP	N27° 31' 52.170", W082° 37' 22.510"	18000	VNAV	280	FLY_BY	TF
PLOWS	WP	N26° 54' 54.450", W082° 26' 33.320"	18000	VNAV	280	FLY_BY	TF
EEVEN	WP	N26° 43' 43.726", W082° 06' 57.955"	18000	VNAV	280	FLY_BY	TF
NAGIE	WP	N26° 28' 33.180", W081° 41' 51.634"	18000	VNAV	280	FLY_BY	TF
WESTN	WP	N26° 13' 26.709", W081° 19' 06.829"	9000	VNAV	280	FLY_BY	TF
CUURT	WP	N26° 00' 40.446", W081° 00' 02.459"	6000	VNAV	280	FLY_BY	TF
RAZLE	WP	N25° 55' 58.920", W080° 46' 34.564"	6000	VNAV	280	FLY_BY	TF
FRRDY	WP	N25° 59' 57.260", W080° 28' 24.830"	6000	VNAV	280	FLY_BY	TF
BOOZR	WP	N25° 59' 22.725", W080° 06' 37.869"	6000	VNAV	280	FLY_OVER	TF

DME DME Assessment Results for CUURT1 path DEFUN_BOOZR

Flyability	
Flight Type:	RNAV_STAR
Selected Airport:	KOPF [IFPA]
Climb Gradient:	None assigned
Speeds:	200 Ground Speed to 11000 FT
	240 Ground Speed to 18000 FT
	260 Ground Speed to 24000 FT
	340 Ground Speed above 24000 FT
Descent During a Turn:	Allowed
VNAV Mode:	Flight Plan

DME/DME	
RNP:	RNP 2
Flight Mode:	Manual
Line of Sight (DTED Level 0 Max):	Evaluated
Inertial Drift:	Enabled
Initial Drift:	0.558 NM
INS Drift Rate:	8.0 NM/Hour
Range Mode:	OSV
RNP Edges:	Evaluated
Min DME Range:	3.0 NM
DME Types:	DME, VOR-DME, VORTAC
DME Include Angles:	30 to 150
Critical DMEs:	Not Allowed
DoD Facilities:	Not included
Foreign Facilities:	Included
High DMEs:	Included
Low DMEs:	Included
Terminal DMEs:	Included
Flight Check DMEs:	Not selected
Higher Altitudes:	Not Evaluated
Near Maximum Altitude:	Not Evaluated
Automatic ESVs:	Not enabled
Disabled DMEs:	ZFP,ZQA,ZTC

DME DME Assessment Results for CUURT1 path DEFUN_BOOZR

DME/DME (Continued)										
DMEs Used										
#	Name	Lat/Lon	MAGVAR	Range	Type	Source	Critical	Status	Time	Distance
1	LAL	N27° 59' 10.310", W082° 00' 50.056"	1.0 E	130	H	IFPA	NO	Enabled	38.8 %	38.9 %
2	PHK	N26° 46' 57.873", W080° 41' 29.157"	0.0 E	130	H	IFPA	NO	Enabled	23.5 %	23.5 %
3	OZR	N31° 16' 08.215", W085° 43' 34.725"	3.0 W	40	L	IFPA	NO	Enabled	9.1 %	9.1 %
4	OTK	N30° 46' 49.599", W083° 16' 47.024"	2.0 W	130	H	IFPA	NO	Enabled	31.1 %	31.1 %
5	MGM	N32° 13' 20.214", W086° 19' 11.018"	3.0 E	130	H	IFPA	NO	Enabled	20.3 %	20.2 %
6	CTY	N29° 35' 56.403", W083° 02' 55.651"	2.0 W	40	L	IFPA	NO	Enabled	11.8 %	11.8 %
7	RRS	N31° 17' 04.514", W085° 25' 52.355"	2.0 E	40	L	IFPA	NO	Enabled	9.1 %	9.1 %
8	RSW	N26° 31' 47.551", W081° 46' 32.764"	2.0 W	40	L	IFPA	NO	Enabled	15.2 %	15.2 %
9	ORL	N28° 32' 33.802", W081° 20' 06.053"	0.0 E	130	H	IFPA	NO	Enabled	19.6 %	19.6 %
10	TAY	N30° 30' 16.696", W082° 33' 10.452"	3.0 W	130	H	IFPA	NO	Enabled	24.2 %	24.3 %
11	CYY	N26° 09' 12.339", W081° 46' 41.172"	3.0 W	25	T	IFPA	NO	Enabled	1.6 %	1.6 %
12	SRQ	N27° 24' 25.256", W082° 33' 49.185"	5.0 W	130	H	IFPA	NO	Enabled	35.2 %	35.2 %
13	GEF	N30° 33' 04.830", W083° 46' 59.278"	1.0 E	40	L	IFPA	NO	Enabled	12 %	12 %
14	PIE	N27° 54' 27.952", W082° 41' 03.513"	5.0 W	130	H	IFPA	NO	Enabled	39.4 %	39.5 %
15	VKZ	N25° 45' 06.846", W080° 09' 15.996"	4.0 W	130	H	IFPA	NO	Enabled	9.5 %	9.5 %
16	CEW	N30° 49' 34.226", W086° 40' 44.916"	3.0 E	130	H	IFPA	NO	Enabled	14.6 %	14.5 %
17	LBV	N26° 49' 41.466", W081° 23' 29.178"	1.0 E	40	L	IFPA	NO	Enabled	10.4 %	10.4 %
18	MLB	N28° 06' 19.120", W080° 38' 06.460"	7.0 W	130	DH	IFPA	NO	Enabled	33.9 %	33.9 %
19	FLL	N26° 04' 26.183", W080° 09' 59.192"	6.0 W	130	H	IFPA	NO	Enabled	11.6 %	11.5 %
20	MAI	N30° 47' 10.305", W085° 07' 28.081"	0.0 E	40	L	IFPA	NO	Enabled	11.3 %	11.3 %
21	AMG	N31° 32' 11.598", W082° 30' 29.120"	0.0 E	130	H	IFPA	NO	Enabled	14.5 %	14.5 %
22	DHP	N25° 47' 59.866", W080° 20' 56.526"	4.0 W	130	H	IFPA	NO	Enabled	15.3 %	15.3 %
23	PBI	N26° 40' 48.198", W080° 05' 11.359"	3.0 W	130	H	IFPA	NO	Enabled	4.2 %	4.2 %
24	SZW	N30° 33' 22.418", W084° 22' 26.192"	2.0 E	130	H	IFPA	NO	Enabled	37.7 %	37.7 %
25	ZFP	N26° 33' 19.250", W078° 41' 52.250"	3.0 W	130	H	IFPA	NO	Disabled		
26	ZQA	N25° 01' 31.800", W077° 26' 47.100"	6.0 W	130	H	IFPA	NO	Disabled		
27	ZTC	N26° 44' 05.000", W077° 22' 45.000"	5.0 W	130	H	IFPA	NO	Disabled		

DME DME Assessment Results for CUURT1 path DEFUN_BOOZR

Flight Check DME Selection						
Distance [NM]	Selected DMEs					Alternate
0.0	MGM	CEW	OZR	SZW		
12.2	OZR	MAI	CEW	SZW	MGM	
35.2	RRS	MAI	CEW	SZW	OZR	
44.2	RRS	MAI	CEW	SZW	MGM	AMG
46.6	RRS	CEW	SZW	MGM	AMG	
57.2	MGM	OTK	CEW	AMG	SZW	
70.5	AMG	MGM	OTK	SZW		
77.5	AMG	SZW	MGM	OTK	MAI	
85.1	AMG	MGM	OTK	MAI		
86.4	AMG	MGM	OTK	MAI	GEF	
92.4	MGM	OTK	AMG	GEF	TAY	
107.1	SZW	OTK	GEF	AMG	TAY	
114.5	SZW	GEF	OTK	TAY		
144.4	TAY	SZW	OTK			
150.7	CTY	OTK	TAY	SZW		
178.7	SZW	CTY	PIE	TAY	OTK	
195.4	LAL	CTY	TAY	PIE	OTK	
197.6	LAL	CTY	TAY	PIE		
207.6	TAY	LAL	PIE			
207.7						
216.7	ORL	PIE	SRQ			
218.6	ORL	PIE	SRQ	LAL		
236.9	ORL	SRQ	PIE	MLB	LAL	
275.1	LAL	SRQ	ORL	MLB		
281.0	LAL	SRQ	PIE	ORL	MLB	
306.1	LAL	PIE	MLB	ORL		
311.3	MLB	PIE	LAL			
313.1	MLB	PIE	LAL	SRQ		
332.7	LAL	PHK	SRQ	PIE	MLB	
384.0	LBV	SRQ	PHK	DHP	LAL	VKZ
393.5	RSW	LBV	DHP	FLL	PHK	SRQ
393.7	RSW	LBV	MLB			
398.7	RSW	CYY	LBV	MLB		
400.7	RSW	CYY	LBV			
406.5	PHK	RSW	LBV			
413.0	PHK	RSW				
421.3						
432.2	PHK	DHP				
442.0	PHK	DHP	FLL			
442.3	PHK	VKZ	DHP	FLL		
446.4	VKZ	FLL				
446.6	PHK	VKZ	DHP	FLL		
462.9	PHK	FLL	DHP			
470.3	PHK	FLL	VKZ	DHP		
470.5	VKZ	FLL	DHP			
477.0	VKZ	DHP				
482.7	FLL	DHP	VKZ			

Inertial Drift Segments			
#	Start Location	End Location	Length [NM]
1	N28° 59' 14.624", W083° 12' 22.217"	N28° 51' 03.092", W083° 08' 14.063"	8.941
2	N26° 07' 58.224", W081° 10' 55.282"	N26° 01' 27.888", W081° 01' 13.081"	10.8813

DME DME Assessment Results for CUURT1 path DEFUN_BOOZR

Available DMEs by Waypoints

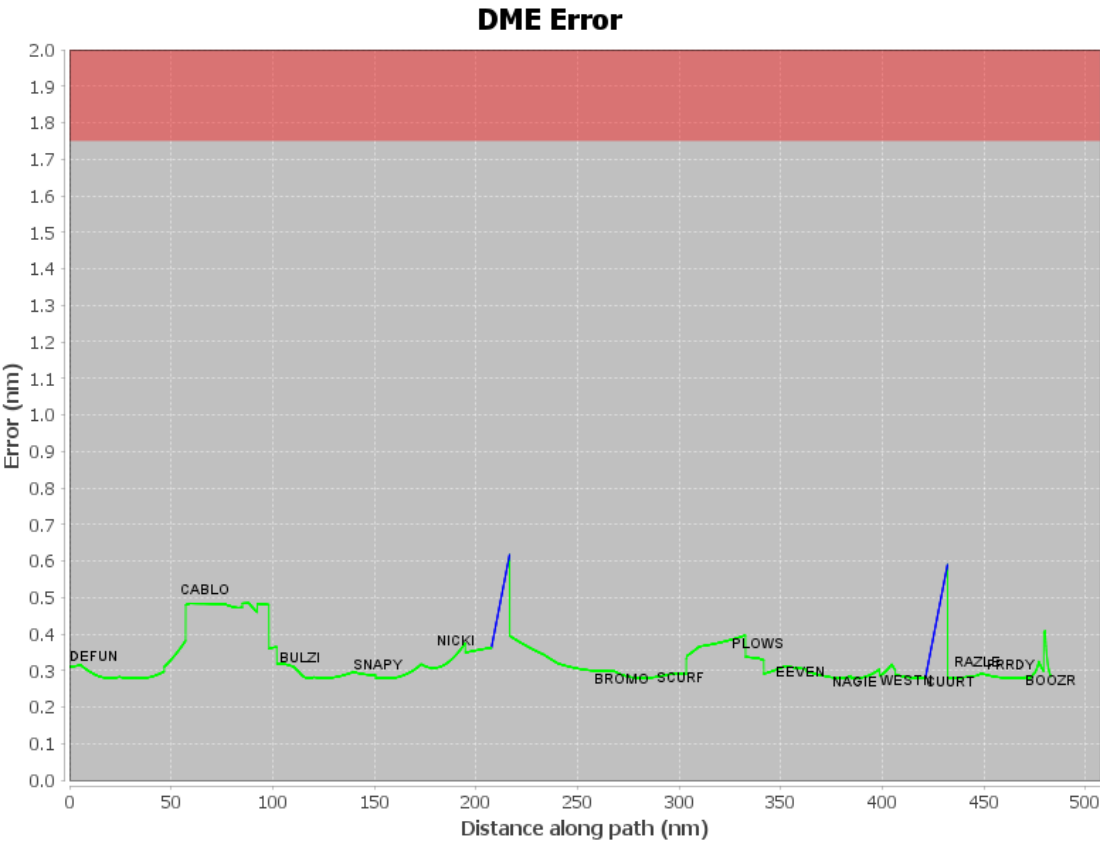
Waypoint Before	Waypoint After	DME List	Suggested DMEs
DEFUN	CABLO	SZW, MGM, RRS, CEW, MAI, OZR, OTK, AMG	
CABLO	BULZI	SZW, MGM, CEW, MAI, OTK, GEF, AMG, TAY	
BULZI	SNAPY	SZW, OTK, GEF, CTY, AMG, TAY	
SNAPY	NICKI	SZW, OTK, CTY, TAY, PIE	
NICKI	BROMO	SZW, MLB, SRQ, LAL, OTK, ORL, CTY, TAY, PIE	
BROMO	SCURF	MLB, SRQ, LAL, ORL, PIE	
SCURF	PLOWS	MLB, PHK, SRQ, LAL, ORL, PIE	
PLOWS	EEVEN	PHK, MLB, SRQ, LAL, RSW, PIE	
EEVEN	NAGIE	LBV, MLB, PHK, SRQ, VKZ, LAL, PBI, RSW, FLL, PIE, DHP	
NAGIE	WESTN	LBV, MLB, PHK, CYY, SRQ, VKZ, LAL, PBI, RSW, FLL, DHP	
WESTN	CUURT	LBV, PHK, RSW, DHP	
CUURT	RAZLE	PHK, VKZ, FLL, DHP	
RAZLE	FRRDY	PHK, VKZ, FLL, DHP	
FRRDY	BOOZR	PHK, VKZ, FLL, DHP	

User Data Files

#	File Name
1	UserDMEsKMIA [IFPA] FROGZ4 RNAV STAR_20220512_0830 EDT.udt

User DMEs

#	Name	Lat/Lon	MAGVAR	Range	Elevation [ft]	Frequency	Replaces	Status
1	UDT ESV AMG AMG [IFPA]	N31° 32' 11.598", W082° 30' 29.120"	0.0 E	130	193.5	115.1	UDT ESV AMG	
ESV:		Bearing [True]: 170.0 to 350.0 Bearing [Mag]: 170.0 to 350.0				Arc Distance: Out to 155.0 NM Altitude: 18000.0 to 45000.0 ft		
2	DHP FAA 955265-65 DHP [IFPA]	N25° 47' 59.866", W080° 20' 56.526"	4.0 W	130	5.9	113.9	DHP FAA 955265-65	
ESV:		Bearing [True]: 238.0 to 292.0 Bearing [Mag]: 242.0 to 296.0				Arc Distance: Out to 85.0 NM Altitude: 5900.0 to 14600.0 ft		
3	RSW FAA 191354-15 RSW [IFPA]	N26° 31' 47.551", W081° 46' 32.764"	2.0 W	40	25	114.15	RSW FAA 191354-15	
ESV:		Bearing [True]: 293.0 to 313.0 Bearing [Mag]: 295.0 to 315.0				Arc Distance: Out to 130.0 NM Altitude: 12800.0 to 18000.0 ft		
4	PHK FAA 900991-43 PHK [IFPA]	N26° 46' 57.873", W080° 41' 29.157"	0.0 E	130	15.5	115.4	PHK FAA 900991-43	
ESV:		Bearing [True]: 143.0 to 238.0 Bearing [Mag]: 143.0 to 238.0				Arc Distance: Out to 55.0 NM Altitude: 3000.0 to 16000.0 ft		
5	UDT ESV PHK PHK [IFPA]	N26° 46' 57.873", W080° 41' 29.157"	0.0 E	130	15.5	115.4	UDT ESV PHK	
ESV:		Bearing [True]: 216.0 to 232.0 Bearing [Mag]: 216.0 to 232.0				Arc Distance: Out to 83.0 NM Altitude: 8900.0 to 14600.0 ft		
6	UDT ESV MGM MGM [IFPA]	N32° 13' 20.214", W086° 19' 11.018"	3.0 E	130	271	112.1	UDT ESV MGM	
ESV:		Bearing [True]: 108.0 to 248.0 Bearing [Mag]: 105.0 to 245.0				Arc Distance: Out to 155.0 NM Altitude: 18000.0 to 33000.0 ft		



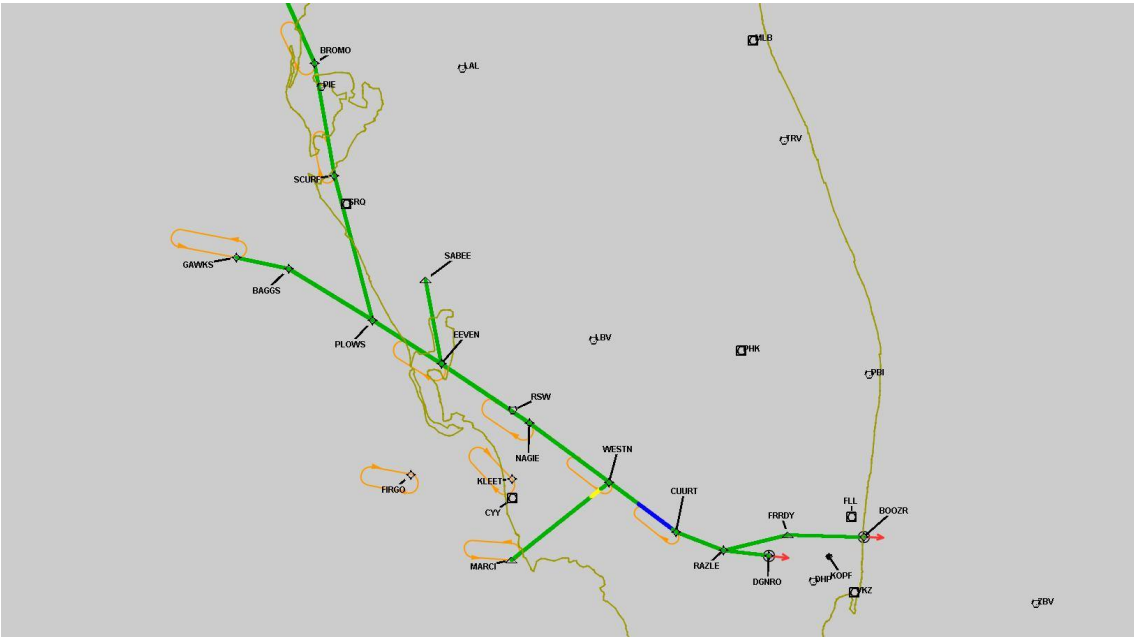
DME DME Assessment Results for CUURT1 path DEFUN_BOOZR

Graphic Depiction 1



DME DME Assessment Results for CUURT1 path DEFUN_BOOZR

Graphic Depiction 2



DME DME Assessment Results for CUURT1 path GAWKS_PLOWS

Results Summary

Flyability:	Completed
DME/DME:	Completed - No Critical DMEs
Name:	Miles CTR Carpenter
Project File:	C:\Users\Miles CTR Carpenter\Desktop\KOPF STARS\KOPF CUURT1 STAR\KOPF CUURT1 STAR DME 20220726.tgs
Output File:	C:\Users\Miles CTR Carpenter\Desktop\KOPF STARS\KOPF CUURT1 STAR\KOPF CUURT1 STAR DME\KOPF [IFPA] CUURT1 20220726_1559 EDT\GAWKS_PLOWS\KOPF CUURT1 RNAV STAR GAWKS PLOWS 20220726_1559 EDT.pdf
Procedure Name:	CUURT1
Software: DmeDmePlugin:	6.5.1
Date/Time:	07/26/2022 15:59 EDT
Databases:	DTED MAX

Failures

No Failures

Warnings

No Warnings

Informational

No Informational

Notes For Flight Check

None

Flight Plan

Name	Type	Lat/Lon	Altitude (ft)	VNAV Mode	Ground Speed (kts)	Turn Type	Leg Type
GAWKS	WP	N27° 10' 53.380", W083° 05' 15.170"	18000	VNAV	280	FLY_BY	TF
BAGGS	WP	N27° 08' 03.280", W082° 50' 27.200"	18000	VNAV	280	FLY_BY	TF
PLOWS	WP	N26° 54' 54.450", W082° 26' 33.320"	18000	VNAV	280	FLY_BY	TF

Flyability

Flight Type:	RNAV_STAR
Selected Airport:	KOPF [IFPA]
Climb Gradient:	None assigned
Speeds:	200 Ground Speed to 11000 FT
	240 Ground Speed to 18000 FT
	260 Ground Speed to 24000 FT
	340 Ground Speed above 24000 FT
Descent During a Turn:	Allowed
VNAV Mode:	Flight Plan

DME DME Assessment Results for CUURT1 path GAWKS_PLOWS

DME/DME	
RNP:	RNP 2
Flight Mode:	Manual
Line of Sight (DTED Level 0 Max):	Evaluated
Inertial Drift:	Enabled
Initial Drift:	0.558 NM
INS Drift Rate:	8.0 NM/Hour
Range Mode:	OSV
RNP Edges:	Evaluated
Min DME Range:	3.0 NM
DME Types:	DME, VOR-DME, VORTAC
DME Include Angles:	30 to 150
Critical DMEs:	Not Allowed
DoD Facilities:	Not included
Foreign Facilities:	Included
High DMEs:	Included
Low DMEs:	Included
Terminal DMEs:	Included
Flight Check DMEs:	Not selected
Higher Altitudes:	Not Evaluated
Near Maximum Altitude:	Not Evaluated
Automatic ESVs:	Not enabled
Disabled DMEs:	ZFP,ZQA,ZTC

DME/DME (Continued)										
DMEs Used										
#	Name	Lat/Lon	MAGVAR	Range	Type	Source	Critical	Status	Time	Distance
1	LAL	N27° 59' 10.310", W082° 00' 50.056"	1.0 E	130	H	IFPA	NO	Enabled	100 %	100 %
2	PHK	N26° 46' 57.873", W080° 41' 29.157"	0.0 E	130	H	IFPA	NO	Enabled	11.9 %	11.9 %
3	SRQ	N27° 24' 25.256", W082° 33' 49.185"	5.0 W	130	H	IFPA	NO	Enabled	100 %	100 %
4	PIE	N27° 54' 27.952", W082° 41' 03.513"	5.0 W	130	H	IFPA	NO	Enabled	100 %	100 %
5	MLB	N28° 06' 19.120", W080° 38' 06.460"	7.0 W	130	DH	IFPA	NO	Enabled	41.4 %	41.5 %
6	RSW	N26° 31' 47.551", W081° 46' 32.764"	2.0 W	40	L	IFPA	NO	Enabled	58.4 %	58.3 %
7	ZFP	N26° 33' 19.250", W078° 41' 52.250"	3.0 W	130	H	IFPA	NO	Disabled		
8	ZQA	N25° 01' 31.800", W077° 26' 47.100"	6.0 W	130	H	IFPA	NO	Disabled		
9	ZTC	N26° 44' 05.000", W077° 22' 45.000"	5.0 W	130	H	IFPA	NO	Disabled		

Flight Check DME Selection						
Distance [NM]	Selected DMEs					Alternate
0.0	RSW	PIE	LAL	SRQ		
22.6	MLB	PIE	LAL	SRQ		
34.0	PHK	SRQ	PIE	LAL	MLB	

Inertial Drift Segments			
#	Start Location	End Location	Length [NM]

Available DMEs by Waypoints			
Waypoint Before	Waypoint After	DME List	Suggested DMEs
GAWKS	BAGGS	SRQ, LAL, RSW, PIE	
BAGGS	PLOWS	MLB, PHK, SRQ, LAL, RSW, PIE	

DME DME Assessment Results for CUURT1 path GAWKS_PLOWS

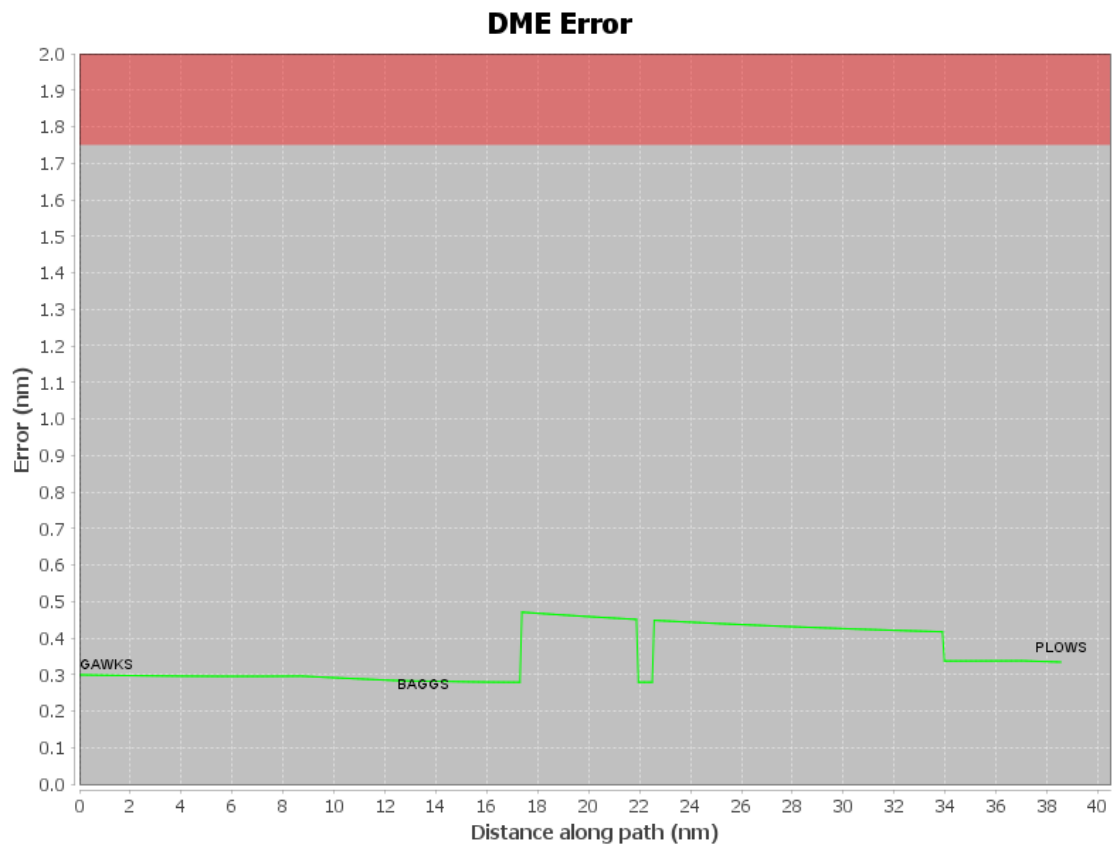
User Data Files

#	File Name							
1	UserDMEsKMIA [IFPA] FROGZ4 RNAV STAR_20220512_0830 EDT.udt							

User DMEs

#	Name	Lat/Lon	MAGVAR	Range	Elevation [ft]	Frequency	Replaces	Status
1	UDT ESV AMG AMG [IFPA]	N31° 32' 11.598", W082° 30' 29.120"	0.0 E	130	193.5	115.1	UDT ESV AMG	
ESV:		Bearing [True]: 170.0 to 350.0 Bearing [Mag]: 170.0 to 350.0				Arc Distance: Out to 155.0 NM Altitude: 18000.0 to 45000.0 ft		
2	DHP FAA 955265-65 DHP [IFPA]	N25° 47' 59.866", W080° 20' 56.526"	4.0 W	130	5.9	113.9	DHP FAA 955265-65	
ESV:		Bearing [True]: 238.0 to 292.0 Bearing [Mag]: 242.0 to 296.0				Arc Distance: Out to 85.0 NM Altitude: 5900.0 to 14600.0 ft		
3	RSW FAA 191354-15 RSW [IFPA]	N26° 31' 47.551", W081° 46' 32.764"	2.0 W	40	25	114.15	RSW FAA 191354-15	
ESV:		Bearing [True]: 293.0 to 313.0 Bearing [Mag]: 295.0 to 315.0				Arc Distance: Out to 130.0 NM Altitude: 12800.0 to 18000.0 ft		
4	PHK FAA 900991-43 PHK [IFPA]	N26° 46' 57.873", W080° 41' 29.157"	0.0 E	130	15.5	115.4	PHK FAA 900991-43	
ESV:		Bearing [True]: 143.0 to 238.0 Bearing [Mag]: 143.0 to 238.0				Arc Distance: Out to 55.0 NM Altitude: 3000.0 to 16000.0 ft		
5	UDT ESV PHK PHK [IFPA]	N26° 46' 57.873", W080° 41' 29.157"	0.0 E	130	15.5	115.4	UDT ESV PHK	
ESV:		Bearing [True]: 216.0 to 232.0 Bearing [Mag]: 216.0 to 232.0				Arc Distance: Out to 83.0 NM Altitude: 8900.0 to 14600.0 ft		
6	UDT ESV MGM MGM [IFPA]	N32° 13' 20.214", W086° 19' 11.018"	3.0 E	130	271	112.1	UDT ESV MGM	
ESV:		Bearing [True]: 108.0 to 248.0 Bearing [Mag]: 105.0 to 245.0				Arc Distance: Out to 155.0 NM Altitude: 18000.0 to 33000.0 ft		

DME DME Assessment Results for CUURT1 path GAWKS_PLOWS



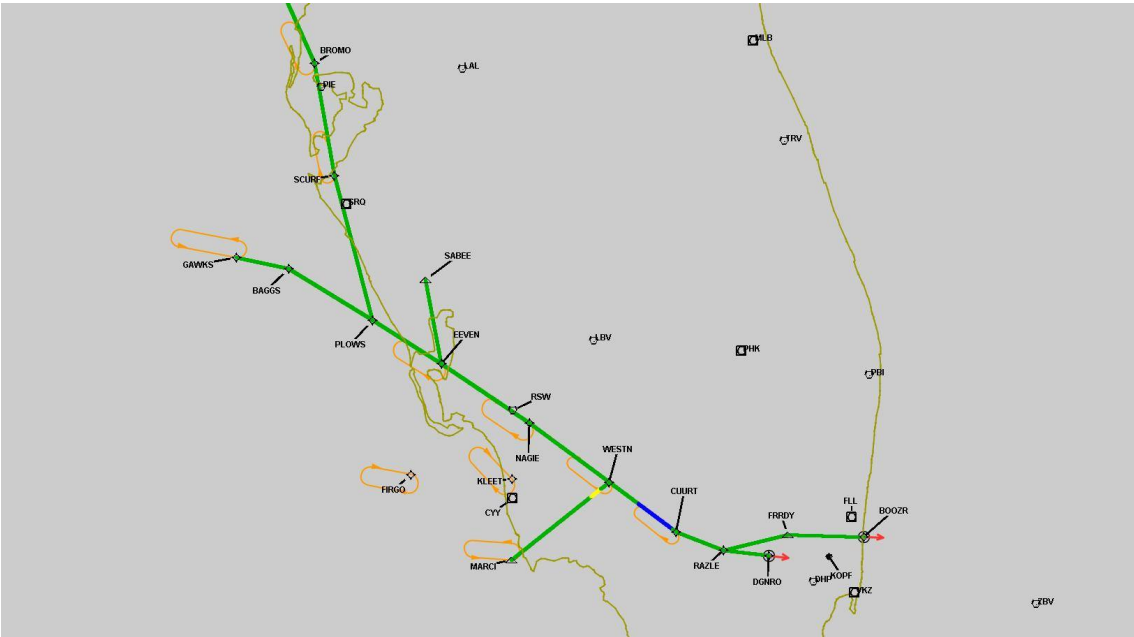
DME DME Assessment Results for CUURT1 path GAWKS_PLOWS

Graphic Depiction 1



DME DME Assessment Results for CUURT1 path GAWKS_PLOWS

Graphic Depiction 2



DME DME Assessment Results for CUURT1 path HONID_BULZI

Results Summary

Flyability:	Completed
DME/DME:	Completed - No Critical DMEs
Name:	Miles CTR Carpenter
Project File:	C:\Users\Miles CTR Carpenter\Desktop\KOPF STARS\KOPF CUURT1 STAR\KOPF CUURT1 STAR DME 20220726.tgs
Output File:	C:\Users\Miles CTR Carpenter\Desktop\KOPF STARS\KOPF CUURT1 STAR\KOPF CUURT1 STAR DME\KOPF [IFPA] CUURT1 20220726_1559 EDT\HONID_BULZI\KOPF CUURT1 RNAV STAR HONID BULZI 20220726_1559 EDT.pdf
Procedure Name:	CUURT1
Software: DmeDmePlugin:	6.5.1
Date/Time:	07/26/2022 15:59 EDT
Databases:	DTED MAX

Failures

No Failures

Warnings

No Warnings

Informational

No Informational

Notes For Flight Check

None

Flight Plan

Name	Type	Lat/Lon	Altitude (ft)	VNAV Mode	Ground Speed (kts)	Turn Type	Leg Type
HONID	WP	N31° 38' 50.310", W084° 23' 42.600"	18000	VNAV	280	FLY_BY	TF
IPOKE	WP	N30° 50' 38.050", W084° 11' 34.840"	18000	VNAV	280	FLY_BY	TF
BULZI	WP	N30° 22' 24.930", W084° 04' 34.470"	18000	VNAV	280	FLY_BY	TF

Flyability

Flight Type:	RNAV_STAR
Selected Airport:	KOPF [IFPA]
Climb Gradient:	None assigned
Speeds:	200 Ground Speed to 11000 FT
	240 Ground Speed to 18000 FT
	260 Ground Speed to 24000 FT
	340 Ground Speed above 24000 FT
Descent During a Turn:	Allowed
VNAV Mode:	Flight Plan

DME DME Assessment Results for CUURT1 path HONID_BULZI

DME/DME	
RNP:	RNP 2
Flight Mode:	Manual
Line of Sight (DTED Level 0 Max):	Evaluated
Inertial Drift:	Enabled
Initial Drift:	0.558 NM
INS Drift Rate:	8.0 NM/Hour
Range Mode:	OSV
RNP Edges:	Evaluated
Min DME Range:	3.0 NM
DME Types:	DME, VOR-DME, VORTAC
DME Include Angles:	30 to 150
Critical DMEs:	Not Allowed
DoD Facilities:	Not included
Foreign Facilities:	Included
High DMEs:	Included
Low DMEs:	Included
Terminal DMEs:	Included
Flight Check DMEs:	Not selected
Higher Altitudes:	Not Evaluated
Near Maximum Altitude:	Not Evaluated
Automatic ESVs:	Not enabled
Disabled DMEs:	ZFP,ZQA,ZTC

DME/DME (Continued)										
DMEs Used										
#	Name	Lat/Lon	MAGVAR	Range	Type	Source	Critical	Status	Time	Distance
1	TAY	N30° 30' 16.696", W082° 33' 10.452"	3.0 W	130	H	IFPA	NO	Enabled	61.2 %	61.2 %
2	LGC	N33° 02' 56.828", W085° 12' 22.397"	1.0 E	130	H	IFPA	NO	Enabled	7.1 %	7.1 %
3	OTK	N30° 46' 49.599", W083° 16' 47.024"	2.0 W	130	H	IFPA	NO	Enabled	100 %	100 %
4	PZD	N31° 39' 18.741", W084° 17' 35.162"	2.0 W	40	L	IFPA	NO	Enabled	46.1 %	46.1 %
5	MGM	N32° 13' 20.214", W086° 19' 11.018"	3.0 E	130	H	IFPA	NO	Enabled	8.5 %	8.5 %
6	MGR	N31° 04' 56.166", W083° 48' 15.176"	-0.0 E	40	L	IFPA	NO	Enabled	77.4 %	77.4 %
7	GEF	N30° 33' 04.830", W083° 46' 59.278"	1.0 E	40	L	IFPA	NO	Enabled	50.4 %	50.4 %
8	MCN	N32° 41' 28.266", W083° 38' 49.860"	1.0 E	130	H	IFPA	NO	Enabled	39.2 %	39.2 %
9	AMG	N31° 32' 11.598", W082° 30' 29.120"	0.0 E	130	H	IFPA	NO	Enabled	79.6 %	79.6 %
10	SZW	N30° 33' 22.418", W084° 22' 26.192"	2.0 E	130	H	IFPA	NO	Enabled	100 %	100 %
11	ZFP	N26° 33' 19.250", W078° 41' 52.250"	3.0 W	130	H	IFPA	NO	Disabled		
12	ZQA	N25° 01' 31.800", W077° 26' 47.100"	6.0 W	130	H	IFPA	NO	Disabled		
13	ZTC	N26° 44' 05.000", W077° 22' 45.000"	5.0 W	130	H	IFPA	NO	Disabled		

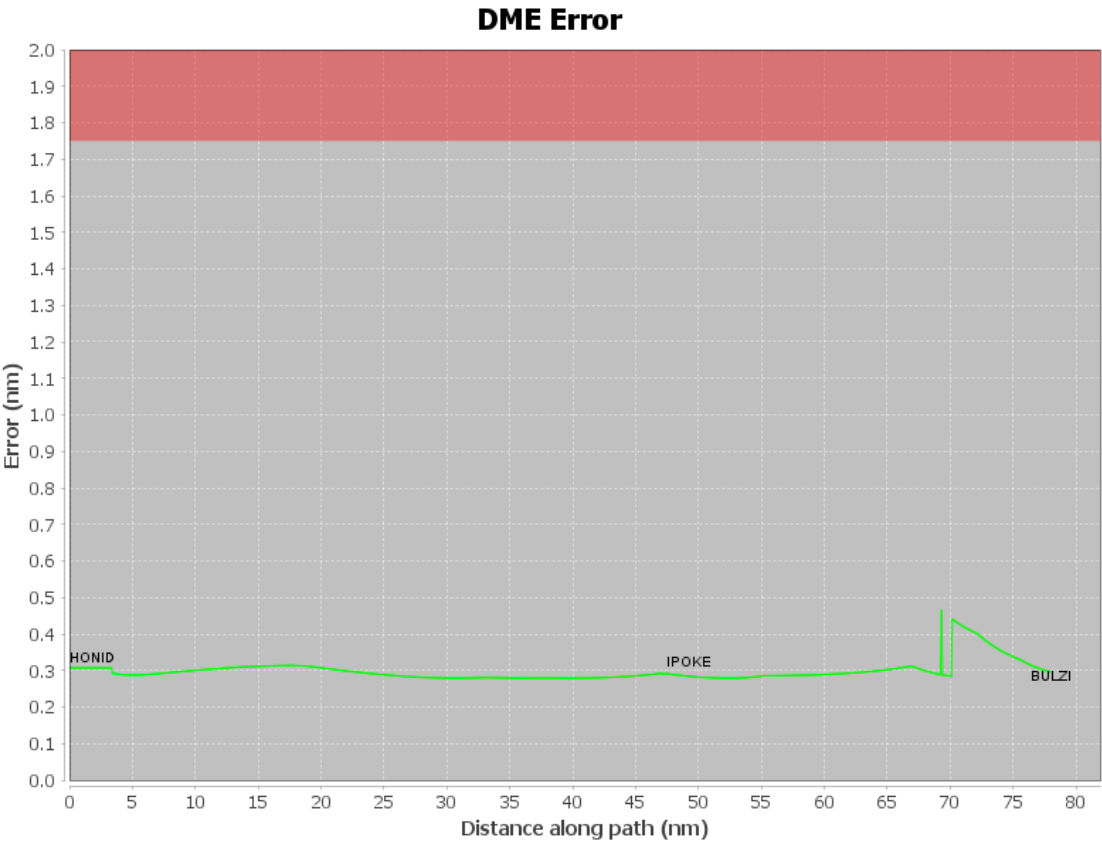
DME DME Assessment Results for CUURT1 path HONID_BULZI

Flight Check DME Selection						
Distance [NM]	Selected DMEs					Alternate
0.0	MCN	OTK	LGC	SZW		
2.2	MCN	OTK	AMG	SZW	LGC	
5.6	PZD	OTK	MCN	AMG	SZW	
30.6	MGR	SZW	PZD	OTK	AMG	TAY
39.5	SZW	OTK	MGR	GEF	TAY	AMG
49.9	SZW	GEF	MGR	OTK	TAY	
69.3	AMG	SZW	MGM	OTK	GEF	TAY
69.4	MGR	SZW	TAY	GEF	OTK	
70.2	AMG	SZW	OTK	TAY		
71.9	AMG	SZW	OTK	GEF	TAY	

Inertial Drift Segments			
#	Start Location	End Location	Length [NM]

Available DMEs by Waypoints			
Waypoint Before	Waypoint After	DME List	Suggested DMEs
HONID	IPOKE	SZW, OTK, LGC, MCN, MGR, GEF, AMG, PZD, TAY	
IPOKE	BULZI	SZW, MGM, OTK, MGR, GEF, AMG, TAY	

User Data Files								
#	File Name							
1	UserDMEsKMIA [IFPA] FROGZ4 RNAV STAR_20220512_0830 EDT.udt							
User DMEs								
#	Name	Lat/Lon	MAGVAR	Range	Elevation [ft]	Frequency	Replaces	Status
1	UDT ESV AMG AMG [IFPA]	N31° 32' 11.598", W082° 30' 29.120"	0.0 E	130	193.5	115.1	UDT ESV AMG	
ESV:		Bearing [True]: 170.0 to 350.0 Bearing [Mag]: 170.0 to 350.0				Arc Distance: Out to 155.0 NM Altitude: 18000.0 to 45000.0 ft		
2	DHP FAA 955265-65 DHP [IFPA]	N25° 47' 59.866", W080° 20' 56.526"	4.0 W	130	5.9	113.9	DHP FAA 955265-65	
ESV:		Bearing [True]: 238.0 to 292.0 Bearing [Mag]: 242.0 to 296.0				Arc Distance: Out to 85.0 NM Altitude: 5900.0 to 14600.0 ft		
3	RSW FAA 191354-15 RSW [IFPA]	N26° 31' 47.551", W081° 46' 32.764"	2.0 W	40	25	114.15	RSW FAA 191354-15	
ESV:		Bearing [True]: 293.0 to 313.0 Bearing [Mag]: 295.0 to 315.0				Arc Distance: Out to 130.0 NM Altitude: 12800.0 to 18000.0 ft		
4	PHK FAA 900991-43 PHK [IFPA]	N26° 46' 57.873", W080° 41' 29.157"	0.0 E	130	15.5	115.4	PHK FAA 900991-43	
ESV:		Bearing [True]: 143.0 to 238.0 Bearing [Mag]: 143.0 to 238.0				Arc Distance: Out to 55.0 NM Altitude: 3000.0 to 16000.0 ft		
5	UDT ESV PHK PHK [IFPA]	N26° 46' 57.873", W080° 41' 29.157"	0.0 E	130	15.5	115.4	UDT ESV PHK	
ESV:		Bearing [True]: 216.0 to 232.0 Bearing [Mag]: 216.0 to 232.0				Arc Distance: Out to 83.0 NM Altitude: 8900.0 to 14600.0 ft		
6	UDT ESV MGM MGM [IFPA]	N32° 13' 20.214", W086° 19' 11.018"	3.0 E	130	271	112.1	UDT ESV MGM	
ESV:		Bearing [True]: 108.0 to 248.0 Bearing [Mag]: 105.0 to 245.0				Arc Distance: Out to 155.0 NM Altitude: 18000.0 to 33000.0 ft		



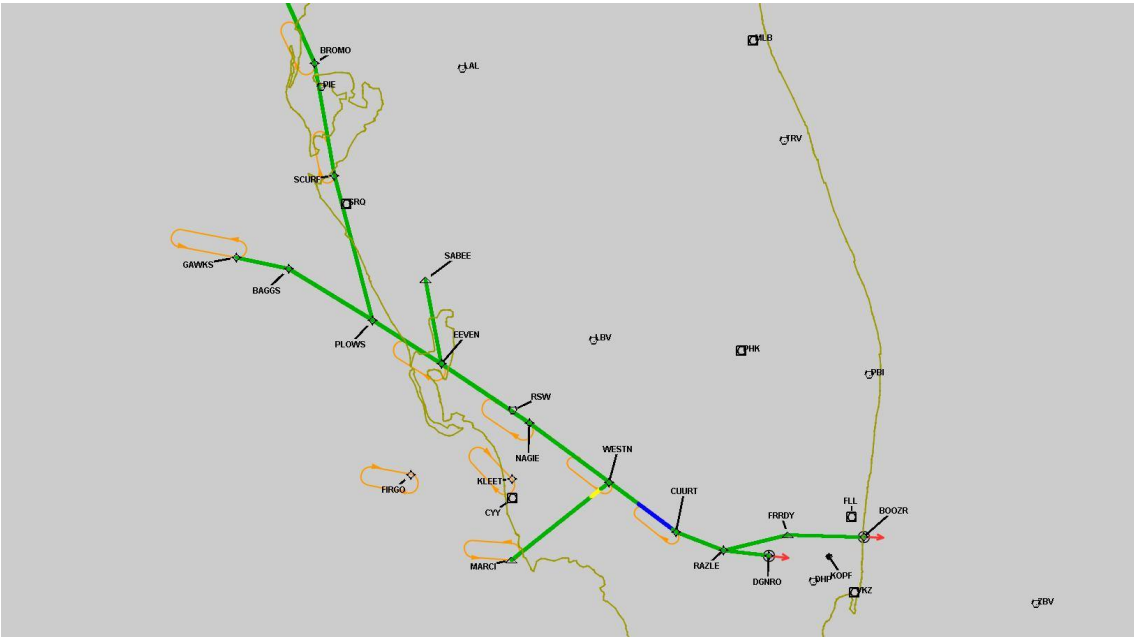
DME DME Assessment Results for CUURT1 path HONID_BULZI

Graphic Depiction 1



DME DME Assessment Results for CUURT1 path HONID_BULZI

Graphic Depiction 2



DME DME Assessment Results for CUURT1 path MARCI_WESTN

Results Summary

Flyability:	Completed
DME/DME:	Completed - No Critical DMEs
Name:	Miles CTR Carpenter
Project File:	C:\Users\Miles CTR Carpenter\Desktop\KOPF STARS\KOPF CUURT1 STAR\KOPF CUURT1 STAR DME 20220726.tgs
Output File:	C:\Users\Miles CTR Carpenter\Desktop\KOPF STARS\KOPF CUURT1 STAR\KOPF CUURT1 STAR DME\KOPF [IFPA] CUURT1 20220726_1559 EDT\MARCI_WESTN\KOPF CUURT1 RNAV STAR MARCI WESTN 20220726_1559 EDT.pdf
Procedure Name:	CUURT1
Software: DmeDmePlugin:	6.5.1
Date/Time:	07/26/2022 15:59 EDT
Databases:	DTED MAX

Failures

No Failures

Warnings

No Warnings

Informational

No Informational

Notes For Flight Check

None

Flight Plan

Name	Type	Lat/Lon	Altitude (ft)	VNAV Mode	Ground Speed (kts)	Turn Type	Leg Type
MARCI	WP	N25° 53' 27.840", W081° 47' 02.370"	9000	VNAV	280	FLY_BY	TF
WESTN	WP	N26° 13' 26.709", W081° 19' 06.829"	9000	VNAV	280	FLY_BY	TF

Flyability

Flight Type:	RNAV_STAR
Selected Airport:	KOPF [IFPA]
Climb Gradient:	None assigned
Speeds:	200 Ground Speed to 11000 FT
	240 Ground Speed to 18000 FT
	260 Ground Speed to 24000 FT
	340 Ground Speed above 24000 FT
Descent During a Turn:	Allowed
VNAV Mode:	Flight Plan

DME DME Assessment Results for CUURT1 path MARCI_WESTN

DME/DME	
RNP:	RNP 2
Flight Mode:	Manual
Line of Sight (DTED Level 0 Max):	Evaluated
Inertial Drift:	Enabled
Initial Drift:	0.558 NM
INS Drift Rate:	8.0 NM/Hour
Range Mode:	OSV
RNP Edges:	Evaluated
Min DME Range:	3.0 NM
DME Types:	DME, VOR-DME, VORTAC
DME Include Angles:	30 to 150
Critical DMEs:	Not Allowed
DoD Facilities:	Not included
Foreign Facilities:	Included
High DMEs:	Included
Low DMEs:	Included
Terminal DMEs:	Included
Flight Check DMEs:	Not selected
Higher Altitudes:	Not Evaluated
Near Maximum Altitude:	Not Evaluated
Automatic ESVs:	Not enabled
Disabled DMEs:	ZFP,ZQA,ZTC

DME/DME (Continued)										
DMEs Used										
#	Name	Lat/Lon	MAGVAR	Range	Type	Source	Critical	Status	Time	Distance
1	CYY	N26° 09' 12.339", W081° 46' 41.172"	3.0 W	25	T	IFPA	NO	Enabled	91 %	91 %
2	PHK	N26° 46' 57.873", W080° 41' 29.157"	0.0 E	130	H	IFPA	NO	Enabled	89.8 %	89.8 %
3	LBV	N26° 49' 41.466", W081° 23' 29.178"	1.0 E	40	L	IFPA	NO	Enabled	10.2 %	10.2 %
4	RSW	N26° 31' 47.551", W081° 46' 32.764"	2.0 W	40	L	IFPA	NO	Enabled	91.5 %	91.5 %
5	DHP	N25° 47' 59.866", W080° 20' 56.526"	4.0 W	130	H	IFPA	NO	Enabled	78 %	78 %
6	ZFP	N26° 33' 19.250", W078° 41' 52.250"	3.0 W	130	H	IFPA	NO	Disabled		
7	ZQA	N25° 01' 31.800", W077° 26' 47.100"	6.0 W	130	H	IFPA	NO	Disabled		
8	ZTC	N26° 44' 05.000", W077° 22' 45.000"	5.0 W	130	H	IFPA	NO	Disabled		

Flight Check DME Selection						
Distance [NM]	Selected DMEs					Alternate
0.0	DHP	CYY	PHK			
2.7	DHP	RSW	CYY	PHK		
25.1	PHK	RSW	CYY			
26.1	LBV	CYY	RSW			
29.3	PHK	RSW				
31.9	PHK	RSW	LBV			

Inertial Drift Segments			
#	Start Location	End Location	Length [NM]

Available DMEs by Waypoints			
Waypoint Before	Waypoint After	DME List	Suggested DMEs
MARCI	WESTN	LBV, CYY, PHK, RSW, DHP	

DME DME Assessment Results for CUURT1 path MARCI_WESTN

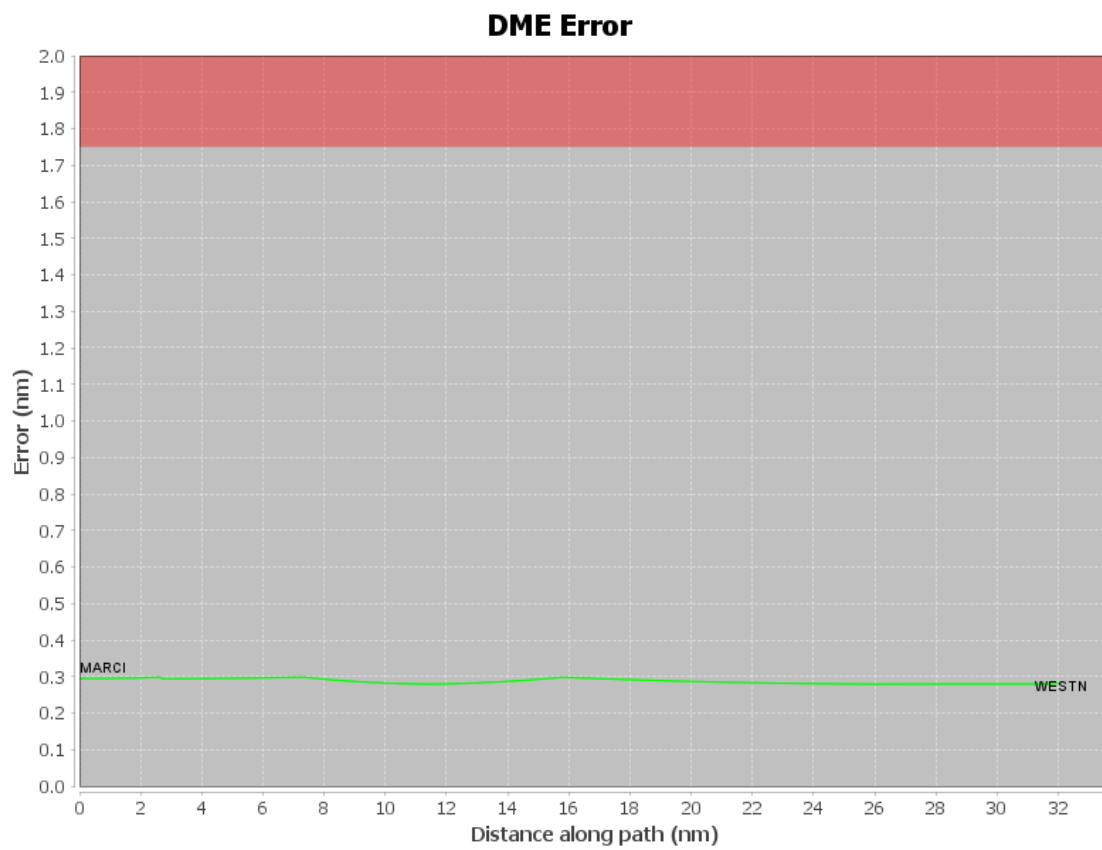
User Data Files

#	File Name
1	UserDMEsKMIA [IFPA] FROGZ4 RNAV STAR_20220512_0830 EDT.udt

User DMEs

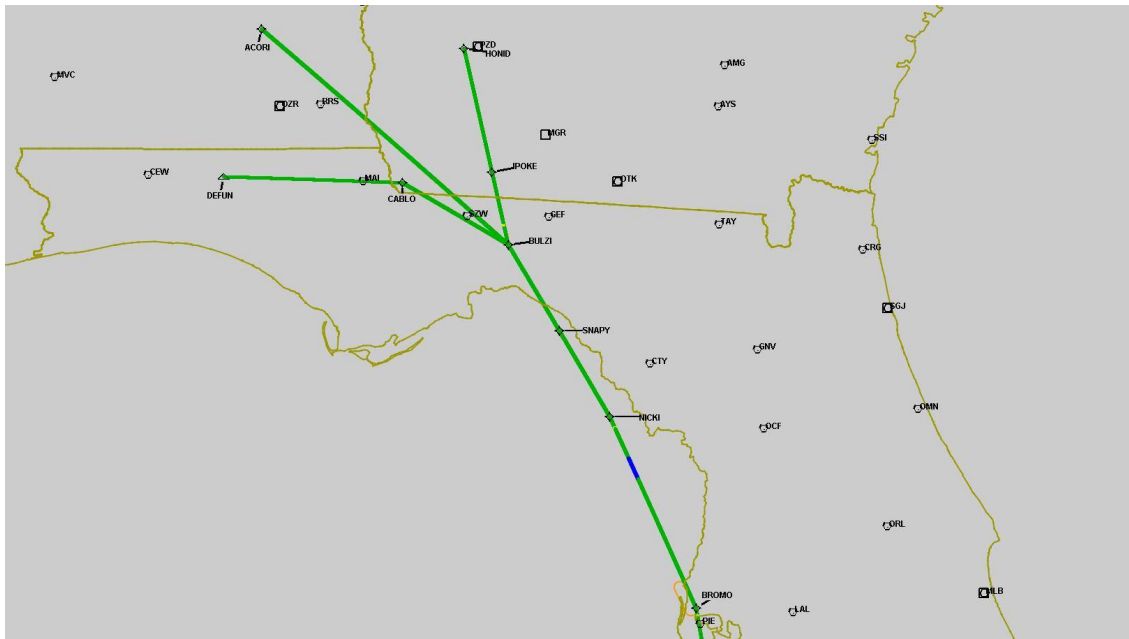
#	Name	Lat/Lon	MAGVAR	Range	Elevation [ft]	Frequency	Replaces	Status
1	UDT ESV AMG AMG [IFPA]	N31° 32' 11.598", W082° 30' 29.120"	0.0 E	130	193.5	115.1	UDT ESV AMG	
ESV:		Bearing [True]: 170.0 to 350.0 Bearing [Mag]: 170.0 to 350.0				Arc Distance: Out to 155.0 NM Altitude: 18000.0 to 45000.0 ft		
2	DHP FAA 955265-65 DHP [IFPA]	N25° 47' 59.866", W080° 20' 56.526"	4.0 W	130	5.9	113.9	DHP FAA 955265-65	
ESV:		Bearing [True]: 238.0 to 292.0 Bearing [Mag]: 242.0 to 296.0				Arc Distance: Out to 85.0 NM Altitude: 5900.0 to 14600.0 ft		
3	RSW FAA 191354-15 RSW [IFPA]	N26° 31' 47.551", W081° 46' 32.764"	2.0 W	40	25	114.15	RSW FAA 191354-15	
ESV:		Bearing [True]: 293.0 to 313.0 Bearing [Mag]: 295.0 to 315.0				Arc Distance: Out to 130.0 NM Altitude: 12800.0 to 18000.0 ft		
4	PHK FAA 900991-43 PHK [IFPA]	N26° 46' 57.873", W080° 41' 29.157"	0.0 E	130	15.5	115.4	PHK FAA 900991-43	
ESV:		Bearing [True]: 143.0 to 238.0 Bearing [Mag]: 143.0 to 238.0				Arc Distance: Out to 55.0 NM Altitude: 3000.0 to 16000.0 ft		
5	UDT ESV PHK PHK [IFPA]	N26° 46' 57.873", W080° 41' 29.157"	0.0 E	130	15.5	115.4	UDT ESV PHK	
ESV:		Bearing [True]: 216.0 to 232.0 Bearing [Mag]: 216.0 to 232.0				Arc Distance: Out to 83.0 NM Altitude: 8900.0 to 14600.0 ft		
6	UDT ESV MGM MGM [IFPA]	N32° 13' 20.214", W086° 19' 11.018"	3.0 E	130	271	112.1	UDT ESV MGM	
ESV:		Bearing [True]: 108.0 to 248.0 Bearing [Mag]: 105.0 to 245.0				Arc Distance: Out to 155.0 NM Altitude: 18000.0 to 33000.0 ft		

DME DME Assessment Results for CUURT1 path MARCI.WESTN

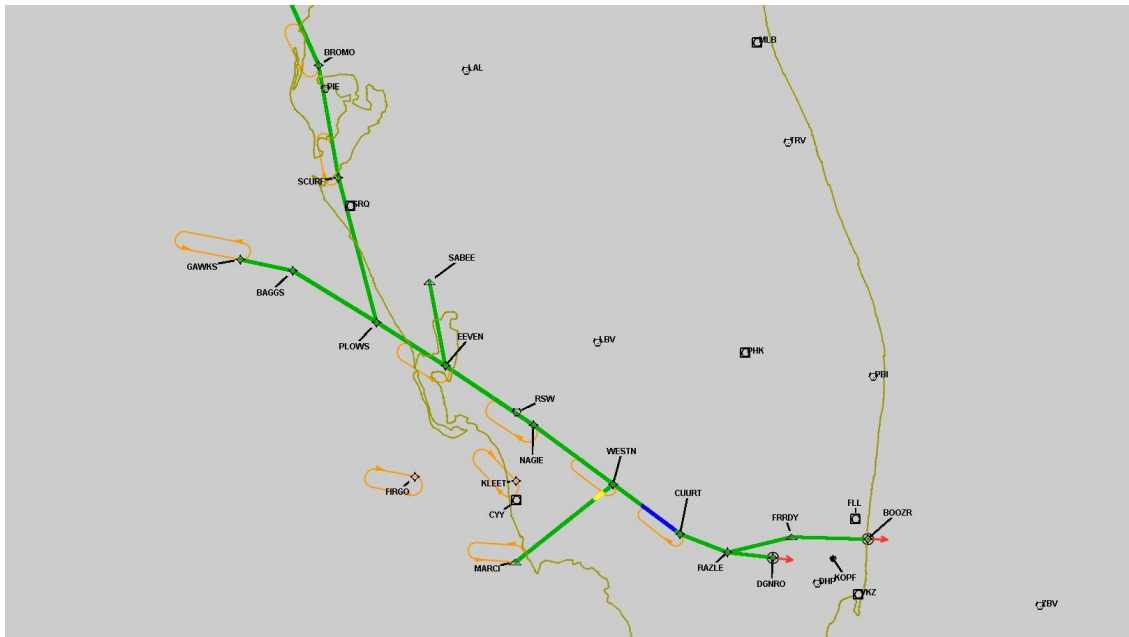


DME DME Assessment Results for CUURT1 path MARCI_WESTN

Graphic Depiction 1



Graphic Depiction 2



DME DME Assessment Results for CUURT1 path RAZLE_DGNRO

Results Summary

Flyability:	Completed
DME/DME:	Completed - No Critical DMEs
Name:	Miles CTR Carpenter
Project File:	C:\Users\Miles CTR Carpenter\Desktop\KOPF STARS\KOPF CUURT1 STAR\KOPF CUURT1 STAR DME 20220726.tgs
Output File:	C:\Users\Miles CTR Carpenter\Desktop\KOPF STARS\KOPF CUURT1 STAR\KOPF CUURT1 STAR DME\KOPF [IFPA] CUURT1 20220726_1559 EDT\RAZLE_DGNRO\KOPF CUURT1 RNAV STAR RAZLE DGNRO 20220726_1559 EDT.pdf
Procedure Name:	CUURT1
Software: DmeDmePlugin:	6.5.1
Date/Time:	07/26/2022 15:59 EDT
Databases:	DTED MAX

Failures

No Failures

Warnings

No Warnings

Informational

No Informational

Notes For Flight Check

None

Flight Plan

Name	Type	Lat/Lon	Altitude (ft)	VNAV Mode	Ground Speed (kts)	Turn Type	Leg Type
RAZLE	WP	N25° 55' 58.920", W080° 46' 34.564"	6000	VNAV	280	FLY_BY	TF
DGNRO	WP	N25° 54' 39.890", W080° 33' 42.818"	6000	VNAV	280	FLY_OVER	TF

Flyability

Flight Type:	RNAV_STAR
Selected Airport:	KOPF [IFPA]
Climb Gradient:	None assigned
Speeds:	200 Ground Speed to 11000 FT
	240 Ground Speed to 18000 FT
	260 Ground Speed to 24000 FT
	340 Ground Speed above 24000 FT
Descent During a Turn:	Allowed
VNAV Mode:	Flight Plan

DME DME Assessment Results for CUURT1 path RAZLE_DGNRO

DME/DME	
RNP:	RNP 2
Flight Mode:	Manual
Line of Sight (DTED Level 0 Max):	Evaluated
Inertial Drift:	Enabled
Initial Drift:	0.558 NM
INS Drift Rate:	8.0 NM/Hour
Range Mode:	OSV
RNP Edges:	Evaluated
Min DME Range:	3.0 NM
DME Types:	DME, VOR-DME, VORTAC
DME Include Angles:	30 to 150
Critical DMEs:	Not Allowed
DoD Facilities:	Not included
Foreign Facilities:	Included
High DMEs:	Included
Low DMEs:	Included
Terminal DMEs:	Included
Flight Check DMEs:	Not selected
Higher Altitudes:	Not Evaluated
Near Maximum Altitude:	Not Evaluated
Automatic ESVs:	Not enabled
Disabled DMEs:	ZFP,ZQA,ZTC

DME/DME (Continued)										
DMEs Used										
#	Name	Lat/Lon	MAGVAR	Range	Type	Source	Critical	Status	Time	Distance
1	VKZ	N25° 45' 06.846", W080° 09' 15.996"	4.0 W	130	H	IFPA	NO	Enabled	100 %	100 %
2	FLL	N26° 04' 26.183", W080° 09' 59.192"	6.0 W	130	H	IFPA	NO	Enabled	100 %	100 %
3	DHP	N25° 47' 59.866", W080° 20' 56.526"	4.0 W	130	H	IFPA	NO	Enabled	100 %	100 %
4	ZFP	N26° 33' 19.250", W078° 41' 52.250"	3.0 W	130	H	IFPA	NO	Disabled		
5	ZQA	N25° 01' 31.800", W077° 26' 47.100"	6.0 W	130	H	IFPA	NO	Disabled		
6	ZTC	N26° 44' 05.000", W077° 22' 45.000"	5.0 W	130	H	IFPA	NO	Disabled		

Flight Check DME Selection						
Distance [NM]	Selected DMEs					Alternate
0.0	FLL	DHP	VKZ			

Inertial Drift Segments			
#	Start Location	End Location	Length [NM]

Available DMEs by Waypoints			
Waypoint Before	Waypoint After	DME List	Suggested DMEs
RAZLE	DGNRO	VKZ, FLL, DHP	

DME DME Assessment Results for CUURT1 path RAZLE_DGNRO

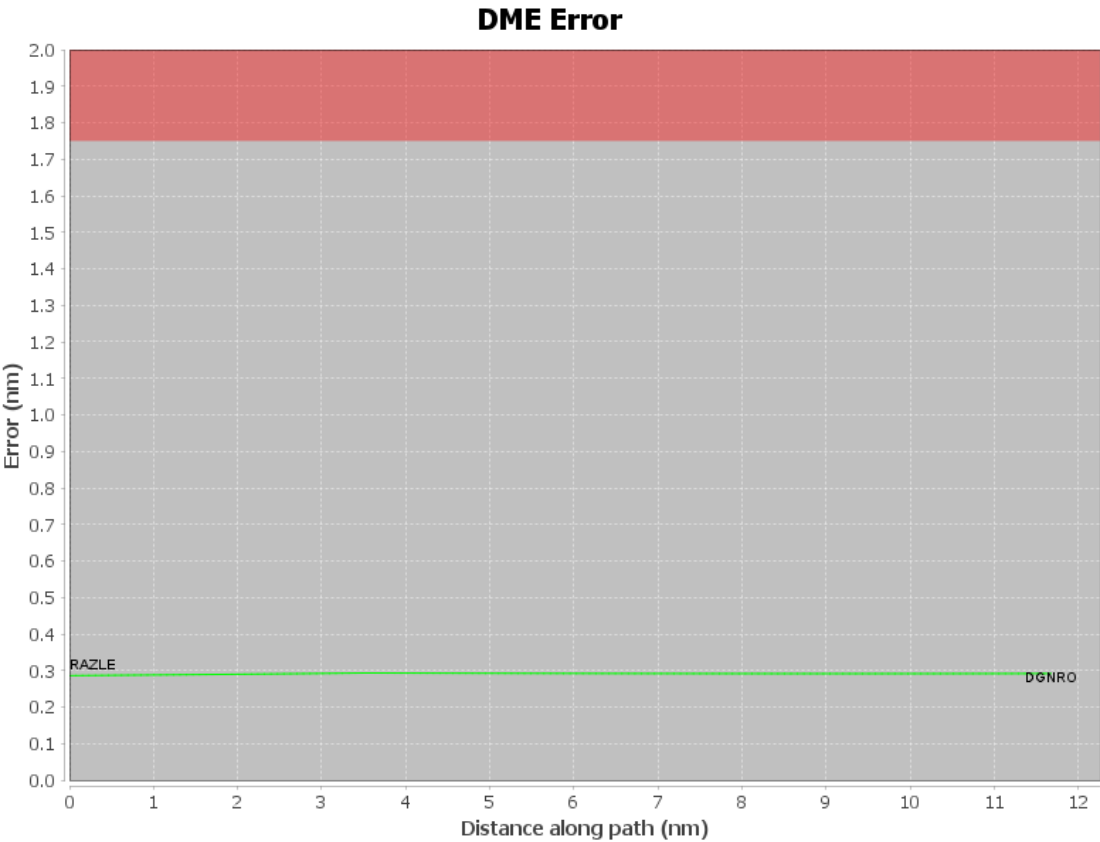
User Data Files

#	File Name
1	UserDMEsKMIA [IFPA] FROGZ4 RNAV STAR_20220512_0830 EDT.udt

User DMEs

#	Name	Lat/Lon	MAGVAR	Range	Elevation [ft]	Frequency	Replaces	Status
1	UDT ESV AMG AMG [IFPA]	N31° 32' 11.598", W082° 30' 29.120"	0.0 E	130	193.5	115.1	UDT ESV AMG	
ESV:		Bearing [True]: 170.0 to 350.0 Bearing [Mag]: 170.0 to 350.0				Arc Distance: Out to 155.0 NM Altitude: 18000.0 to 45000.0 ft		
2	DHP FAA 955265-65 DHP [IFPA]	N25° 47' 59.866", W080° 20' 56.526"	4.0 W	130	5.9	113.9	DHP FAA 955265-65	
ESV:		Bearing [True]: 238.0 to 292.0 Bearing [Mag]: 242.0 to 296.0				Arc Distance: Out to 85.0 NM Altitude: 5900.0 to 14600.0 ft		
3	RSW FAA 191354-15 RSW [IFPA]	N26° 31' 47.551", W081° 46' 32.764"	2.0 W	40	25	114.15	RSW FAA 191354-15	
ESV:		Bearing [True]: 293.0 to 313.0 Bearing [Mag]: 295.0 to 315.0				Arc Distance: Out to 130.0 NM Altitude: 12800.0 to 18000.0 ft		
4	PHK FAA 900991-43 PHK [IFPA]	N26° 46' 57.873", W080° 41' 29.157"	0.0 E	130	15.5	115.4	PHK FAA 900991-43	
ESV:		Bearing [True]: 143.0 to 238.0 Bearing [Mag]: 143.0 to 238.0				Arc Distance: Out to 55.0 NM Altitude: 3000.0 to 16000.0 ft		
5	UDT ESV PHK PHK [IFPA]	N26° 46' 57.873", W080° 41' 29.157"	0.0 E	130	15.5	115.4	UDT ESV PHK	
ESV:		Bearing [True]: 216.0 to 232.0 Bearing [Mag]: 216.0 to 232.0				Arc Distance: Out to 83.0 NM Altitude: 8900.0 to 14600.0 ft		
6	UDT ESV MGM MGM [IFPA]	N32° 13' 20.214", W086° 19' 11.018"	3.0 E	130	271	112.1	UDT ESV MGM	
ESV:		Bearing [True]: 108.0 to 248.0 Bearing [Mag]: 105.0 to 245.0				Arc Distance: Out to 155.0 NM Altitude: 18000.0 to 33000.0 ft		

DME DME Assessment Results for CUURT1 path RAZLE_DGNRO



DME DME Assessment Results for CUURT1 path RAZLE_DGNRO

Graphic Depiction 1



DME DME Assessment Results for CUURT1 path RAZLE_DGNRO

Graphic Depiction 2

