

Flight Procedures Cover Page	Task Action: FLIGHT CHECK	Task Type: STAR	Estimated Chart Date: 01/25/2024	APWS Task ID: 21B5060A21514E3C8F1A7CD578CC9946	APWS Project ID: 8CBD06CA49824980A1547E4E1C2AB05C
Procedure: FLL CUUDA THREE (RNAV) STAR		Enroute: YES	Specialist: Larue, Derek		Agreement Number:
Airport ID: KFLI			Airport City: FORT LAUDERDALE		State: FL
Facility ID:	Facility Type:	Flight Inspection Remark Type: New FC Slot			
<div>Procedure Comments:</div> <div>ACTIVE AND PENDING DATA USED.</div> <div>WAIVER FOR NONSTANDARD AIRCRAFT TYPE NOTE ATTACHED.</div> <div>FIX WOPNR REPLACED WITH ROKKT AND MOVED 60 FT SOUTH. NO CHANGES TO CRS/</div> <div>DIST. REQUEST FC TABLE-TOP.</div> <div>CONTACT JOHN BORDY, 405-954-0980</div> <div><div>09/27/2023</div><div><div>QUALITY 14 CHECKED</div><div>QUALITY 33 CHECKED</div></div></div>					

KFLL, FL

CUUDA THREE (RNAV) STAR

REQUESTED BY: FAA

PRB RESULT: RETURN FOR REWORK

WAIVER: NO HAZARD IDENTIFIED

COMMENTS:

1. APPROVAL REQUEST MEMO OF NO ALTITUDE AT TERMINUS FIX: PARA 4: 7100.65 IS A JO RATHER THAN AN FAAO.
2. 8260-1 SECTION 2: EXPAND CRITERIA REFERENCE TO INCLUDE 8260.19 PARA 4-5-12D.
3. 8260-1 SECTION 1: REMOVE PROCEDURE REVISION NUMBER FROM PROCEDURE IDENTIFICATION IAW BOTH THE 8260.19J PARA 8-4-1 AND 8260.19I PARA 8-4-1.B.

<b>FIPC BASIC FORM</b>						
<b>PROCEDURE:</b> FLL CUUDA THREE (RNAV) STAR			<b>AIRPORT NAME:</b> FORT LAUDERDALE/HOLLYWOOD		<b>AIRPORT ID:</b> KFLI	<b>SPECIAL CONTROL NO:</b> AG-10-114-23
<b>FAC ID:</b> CUUDA3		<b>CITY:</b> FORT LAUDERDALE			<b>ST:</b> FL	<b>ORIG CHART DATE:</b> 01/25/2024
<b>DFL TYPE:</b> PROC/D	<b>THIRD PARTY:</b> <input type="checkbox"/> YES	<b>EST. TIME ON SITE:</b> 1.0	<b>REIMB. NUMBER:</b>	<b>PTS TASK ID:</b> 21B5060A21514E3C8F1A7CD578CC9946		
<b>PREFLIGHT NOTES</b>						
<b>REVIEWER:</b> william m yingling					<b>DATE:</b> 10/23/2023	
<b>COMMENTS:</b> FLL CUUDA THREE (RNAV) STAR NO CHANGES TO CRS. REPLACED WOPNR WAYPOINT WITH NEW WAYPOINT ROKKT, .01NM SOUTH AND RENAMED					<b>CHECK ONE:</b> <input type="checkbox"/> FLT CK REQ <input checked="" type="checkbox"/> NFCR <input type="checkbox"/> REJECT <div style="border-top: 1px solid black; display: flex; justify-content: space-between; padding-top: 2px;"> <span></span> <span>YES</span> <span>NO</span> </div> <div style="border-top: 1px solid black; display: flex; justify-content: space-between; padding-top: 2px;"> <span>CPV COMPLETE?</span> <span>X</span> <span></span> </div>	
<b>PROCEDURE RESULTS</b>						
<b>INSPECTION DATE:</b> 10/24/2023	<b>CREW #:</b> VN534	<b>N #:</b>	<b>INSTRUMENT PROCEDURE STATUS:</b> <input checked="" type="checkbox"/> SAT <input type="checkbox"/> SAT W/CHANGES <input type="checkbox"/> UNSAT		<b>ARINC CODING:</b> <input checked="" type="checkbox"/> SAT <input type="checkbox"/> SAT/GOLD <input type="checkbox"/> UNSAT	
<b>FLIGHT INSPECTOR SIGNATURE:</b> william m yingling @ 10/23/2023 20:14			<b>PRINTED NAME:</b> YINGLING, WILLIAM MARK			<b>NOTAM INITIATED?</b> <input type="checkbox"/> YES <input checked="" type="checkbox"/> NO
<b>FLIGHT INSPECTOR REMARKS:</b> FLL CUUDA THREE (RNAV) STAR NO CHANGES TO CRS. REPLACED WOPNR WAYPOINT WITH NEW WAYPOINT ROKKT, .01NM SOUTH AND RENAMED TRANSITION. ADDED PROCEDURAL DATA NOTE: JET AIRCRAFT ONLY, EXCLUDING EA50, E50P, SF50, C510, C525 AIRCRAFT, WHICH SHOULD FILE TARPEN RNAV STAR. REMOVED AIRPORT NAME FROM AIRPORTS SERVED Procedure as amended is Satisfactory.						
<b>IN-FLIGHT OBSTACLE REPORT</b>						
<b>OBSTRUCTION ID #:</b>	<b>COORDINATES OR LOCATION:</b>	<b>GNSS ALTITUDE (MSL):</b>	<b>BAROMETRIC ALTITUDE (MSL):</b>	<b>HEIGHT ABOVE GROUND LEVEL:</b>		

**1. FLIGHT PROCEDURE IDENTIFICATION:**

Fort Lauderdale, FL  
Fort Lauderdale/Hollywood Intl  
CUUDA ARRIVAL (RNAV)

**2. WAIVER REQUIRED AND APPLICABLE STANDARD:**

To use a note other than specified by Order 8260.19 Paragraphs 4-5-2.w. and 4-5-12.d. When ATC has determined that they do not want pilots to "Flight Plan" or file a particular STAR (i.e., use will be determined by ATC), ATC will request that a chart note be placed on the STAR. In the "Procedural Data Notes" section of Form 8260-17.1, use: "Chart Note: Do Not File – To Be Assigned by ATC."

**3. REASON FOR WAIVER (JUSTIFICATION FOR NONSTANDARD TREATMENT):**

Miami ARTCC requests to use the following Procedural Data Notes:

- JET AIRCRAFT ONLY, EXCLUDING EA50, E50P, SF50, C510, C525 AIRCRAFT, WHICH SHOULD FILE THE TARPEN RNAV STAR.
- DO NOT FILE AYBID, ROKKT, PLUMP, COPIN TRANSITIONS – TO BE ASSIGNED BY ATC

These are to support ATC assigned routings which are required to prevent particular aircraft types from filing Flight Plans that are non-standard routing and ensure they are on the correct arrival into the South Florida Metroplex area. These alternate routings are Data Comm, ERAM, and FMC compliant to allow users to utilize these routes as required by Miami ARTCC.

**4. EQUIVALENT LEVEL FOR SAFETY PROVIDED:**

To ensure that these specific aircraft types have an acceptable route to file into the South Florida area, the CUUDA RNAV STAR was designed to accommodate these users. This allows these aircraft to transition into the terminal area without impacting traffic with differing performance characteristics.

**5. ALTERNATIVE ACTIONS DEEMED NOT FEASIBLE:**

Consideration was given to allowing these aircraft types on the CUUDA (RNAV) STAR but measurable performance differences of these types was too great to provide a consistent and efficient flow of traffic between them and higher performing aircraft. Coding the procedure with altitude and speed constraints based on aircraft types was also discussed, but that is not allowed per criteria.

**6. COORDINATION WITH USER ORGANIZATIONS (SPECIFY):**

ESC PBN Co-Leads, Miami ARTCC, Miami TRACON

**7. SUBMITTED BY:**

DATE	OFFICE IDENTIFICATION	TITLE	SIGNATURE
11/27/2023	AJV-A33	MANAGER	<i>Digitally signed by</i> <b>JOHN BORDY</b> Nov 27, 2023

**8. AFS ACTIONS:**

☐ APPROVED ☐ DISAPPROVED ☐ NOT REQUIRED

**COMMENTS:**

DATE	ROUTING SYMBOL	SIGNATURE
------	----------------	-----------





# Federal Aviation Administration

---

## Memorandum

Date: April 14, 2023

To: Christopher Hope, Manager, Flight Technologies and Procedures Division  
THRU: Romana Wolf, Manager, Flight Procedures and Airspace Group

From: Bev Bordy, Manager, Instrument Flight Procedures (IFP) Coordination Team, AJV-A45

Prepared by: Erik J. John, Sr. ATC Specialist, NAVTAC CTR Support Approval

Subject: Approval Request: Fort Lauderdale, FL (KFL) CUUDA (RNAV) STAR  
No published altitude at terminus fix

---

The termination fixes for the CUUDA Standard Terminal Arrival Route (STAR) are WANAR (RWY 10L/R), QDAWG (RWY 28L/R).

Currently, FAAO 8260.3E, PARA 2-2-7.f. requires an altitude at the termination fix and that altitude must be at or above the minimum vectoring altitude (MVA) and/or minimum IFR altitude (MIA) (as applicable).

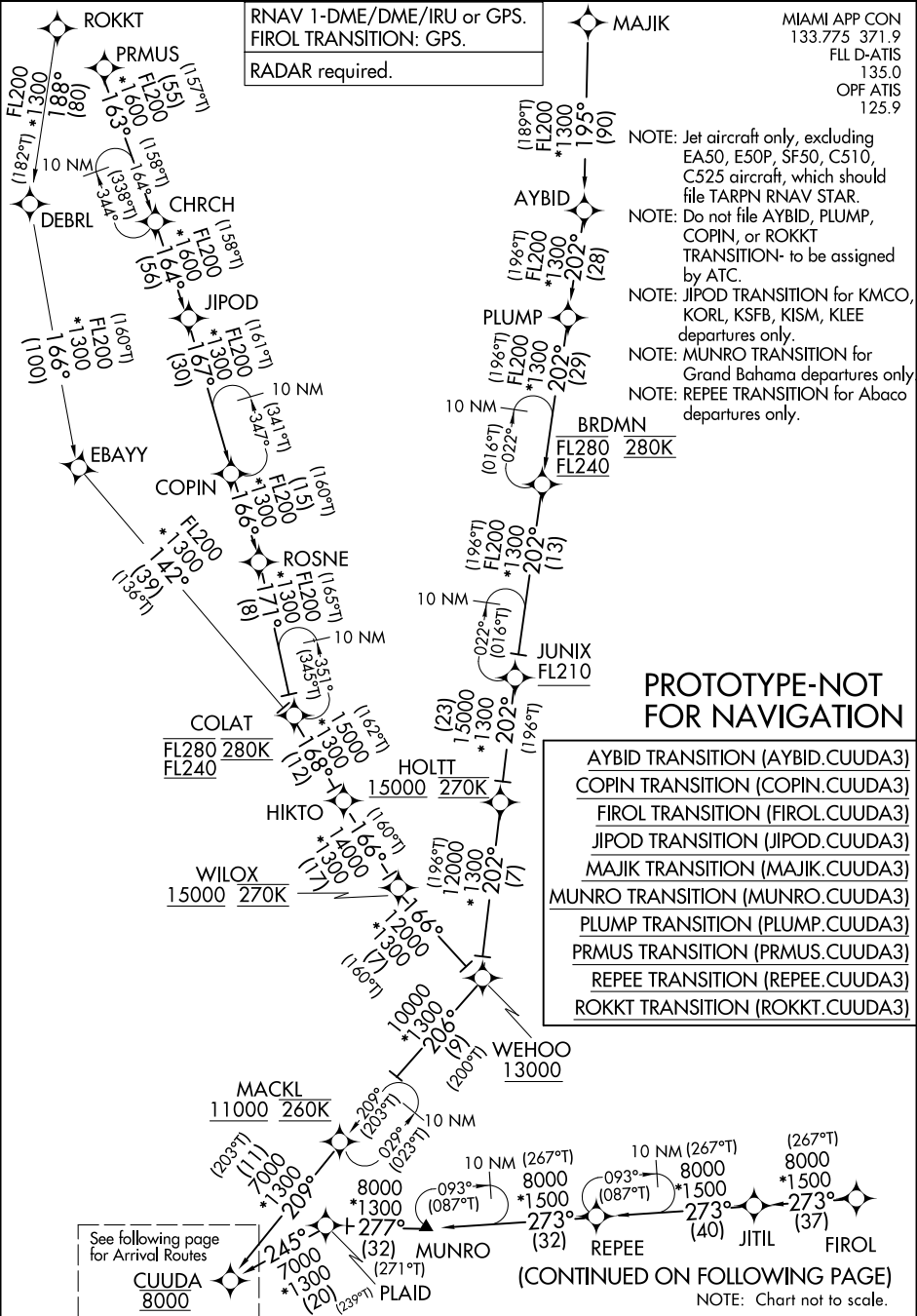
The KFL CUUDA STAR has no published/coded terminus altitude for KFL runway transitions. The STAR serves KFL airport and the delivery altitude at WANAR/QDAWG from MIA TRACON is based on the operation at KMIA, East or West. This is covered in the MIA Letter of Agreement. With varying altitude restrictions in use the coding of a single altitude at WANAR/QDAWG is impractical for Air Traffic and would be misleading, adding possible confusion and distraction to both Air Traffic and the Flight crews utilizing the arrival.

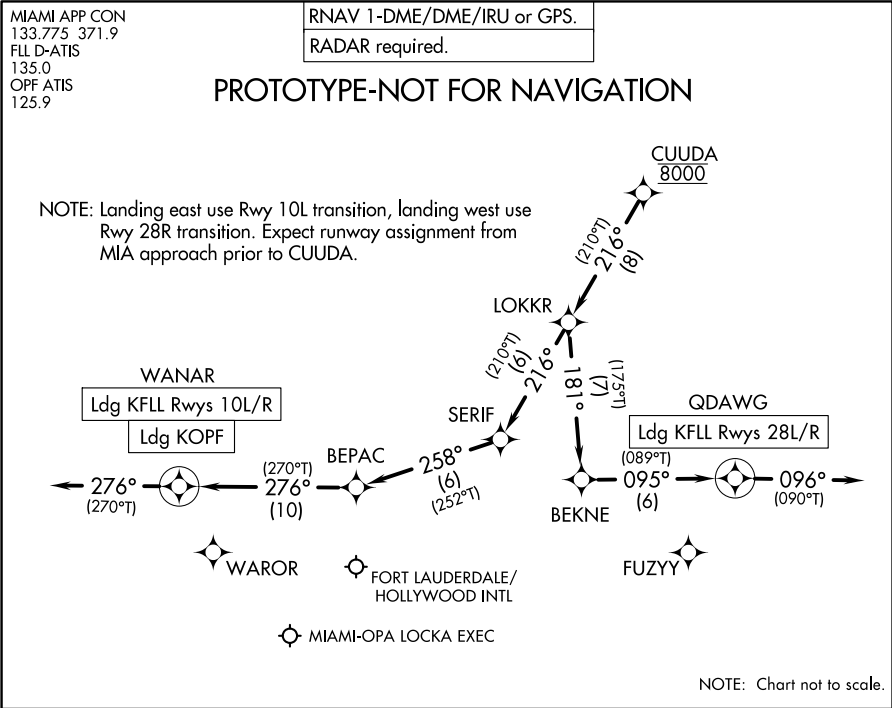
The KFL CUUDA STAR is a "descend via" procedure with a bottom altitude of 8000 at CUUDA. FAAO JO 7110.65 PA RA 4-5-6 and 5-6-1 requires altitude assignments above the minimum IFR altitude / minimum vectoring altitude (MIA/MVA) so the absence of an altitude at the terminus fix will not introduce any new risk into the system.

Therefore, the Miami District is requesting an Approval to continue to utilize the CUUDA (RNAV) STAR without a published terminus altitude for KFL arrivals.

---

Reginald E. Davis  
ESC OSG PBN Management Co-Lead





ARRIVAL ROUTE DESCRIPTION

KFL: From CUUDA on track 216° to LOKKR.

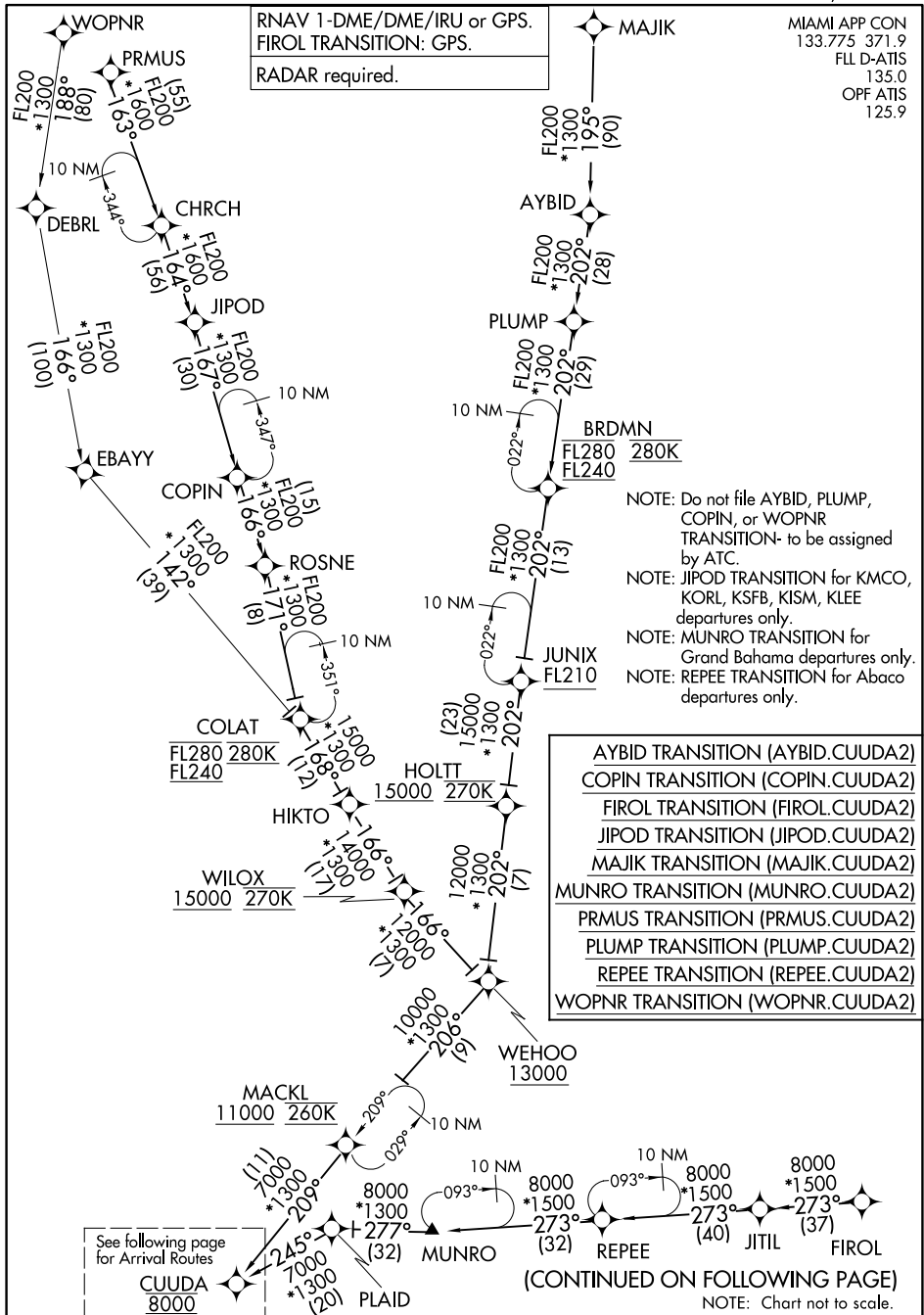
LANDING KFL RUNWAYS 10L/R: From LOKKR on track 216° to SERIF, then on track 258° to BEPAC, then on track 276° to WANAR, then on track 276°. Expect RADAR vectors to final approach course.

LANDING KFL RUNWAYS 28L/R: From LOKKR on track 181° to BEKNE, then on track 095° to QDAWG, then on track 096°. Expect RADAR vectors to final approach course.

LANDING KOPF: From CUUDA on track 216° to LOKKR, then on track 216° to SERIF, then on track 258° to BEPAC, then on track 276° to WANAR, then on track 276°. Expect RADAR vectors to final approach course.

CUUDA TWO ARRIVAL (RNAV) Transition Routes

FORT LAUDERDALE, FLORIDA



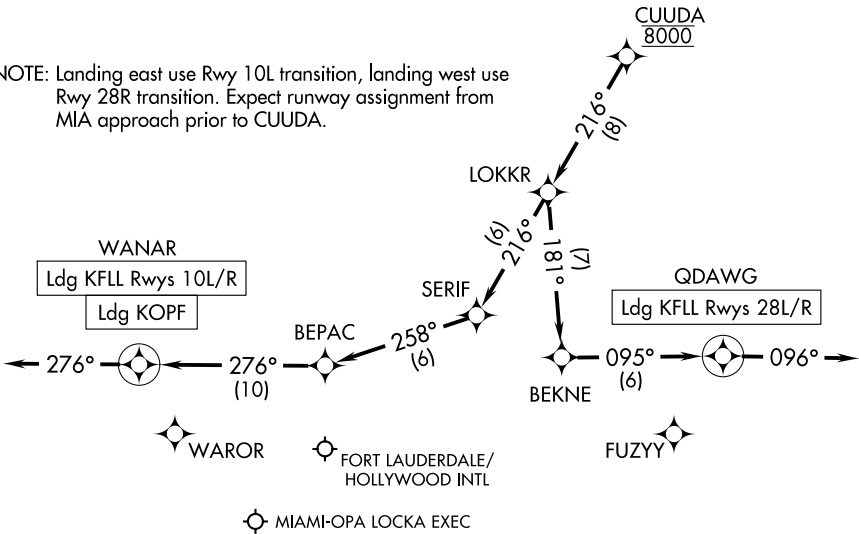
CUUDA TWO ARRIVAL (RNAV) Transition Routes

FORT LAUDERDALE, FLORIDA

MIAMI APP CON  
133.775 371.9  
FLL D-ATIS  
135.0  
OPF ATIS  
125.9

RNAV 1-DME/DME/IRU or GPS.  
RADAR required.

NOTE: Landing east use Rwy 10L transition, landing west use Rwy 28R transition. Expect runway assignment from MIA approach prior to CUUDA.



NOTE: Chart not to scale.

ARRIVAL ROUTE DESCRIPTION

KFLL: From CUUDA on track 216° to LOKKR.

LANDING KFL RUNWAYS 10L/R: From LOKKR on track 216° to SERIF, then on track 258° to BEPAC, then on track 276° to WANAR, then on track 276°. Expect RADAR vectors to final approach course.

LANDING KFL RUNWAYS 28L/R: From LOKKR on track 181° to BEKNE, then on track 095° to QDAWG, then on track 096°. Expect RADAR vectors to final approach course.

LANDING KOPF: From CUUDA on track 216° to LOKKR, then on track 216° to SERIF, then on track 258° to BEPAC, then on track 276° to WANAR, then on track 276°. Expect RADAR vectors to final approach course.

KFLL, FORT  
LAUDERDALE, FL  
CUUDA3 ARRIVAL  
1:500,000

CTC JACKSONVILLE APP WITHIN  
20 NM ON 127.0 292.15

JACKSONVILLE INSET  
See inset chart for additional detail

MAYPORT HIGH MOA  
MAYPORT LOW MOA

See NOTAMS/Supplement  
for Class D/E (sfcr) eff h

MAYPORT NS (ADM DAVID  
L MCDONALD FLD) (NRB)  
CT - 118.75 \* ATIS 136.775  
15 °L 80

CAUTION: HIGH DENSITY  
MILITARY TRAFFIC

JACKSONVILLE EXEC  
AT CRAIG (CRG)  
CT - 132.1 \* ATIS 125.4  
41 °L 40 123.95

122.2 VORTAC  
CRAIG  
114.5 Ch 12 CRG  
GAINESVILLE

CTC JACKSONVILLE APP WITHIN  
20 NM ON 132.7 (5 284.6 ABOVE 5000';  
124.9 308.4 5000' & BELOW

DEEP FOREST  
24 - 64

SPECIAL MILITARY ACTIVITY  
CTC GAINESVILLE RADIO ON 122.2  
FOR ACTIVITY STATUS

60  
05 AGL

VOR-DME  
ST AUGUSTINE  
109.4 Ch 31 SGJ  
GAINESVILLE

NORTHEAST FLORIDA RGNL (SGJ)  
CT - 127.625 \* ATIS 119.825  
10 °L 80  
00 °L 120  
122.25

W-137L

W-137D SOUTH FLORIDA  
LOW CONTROL AREA

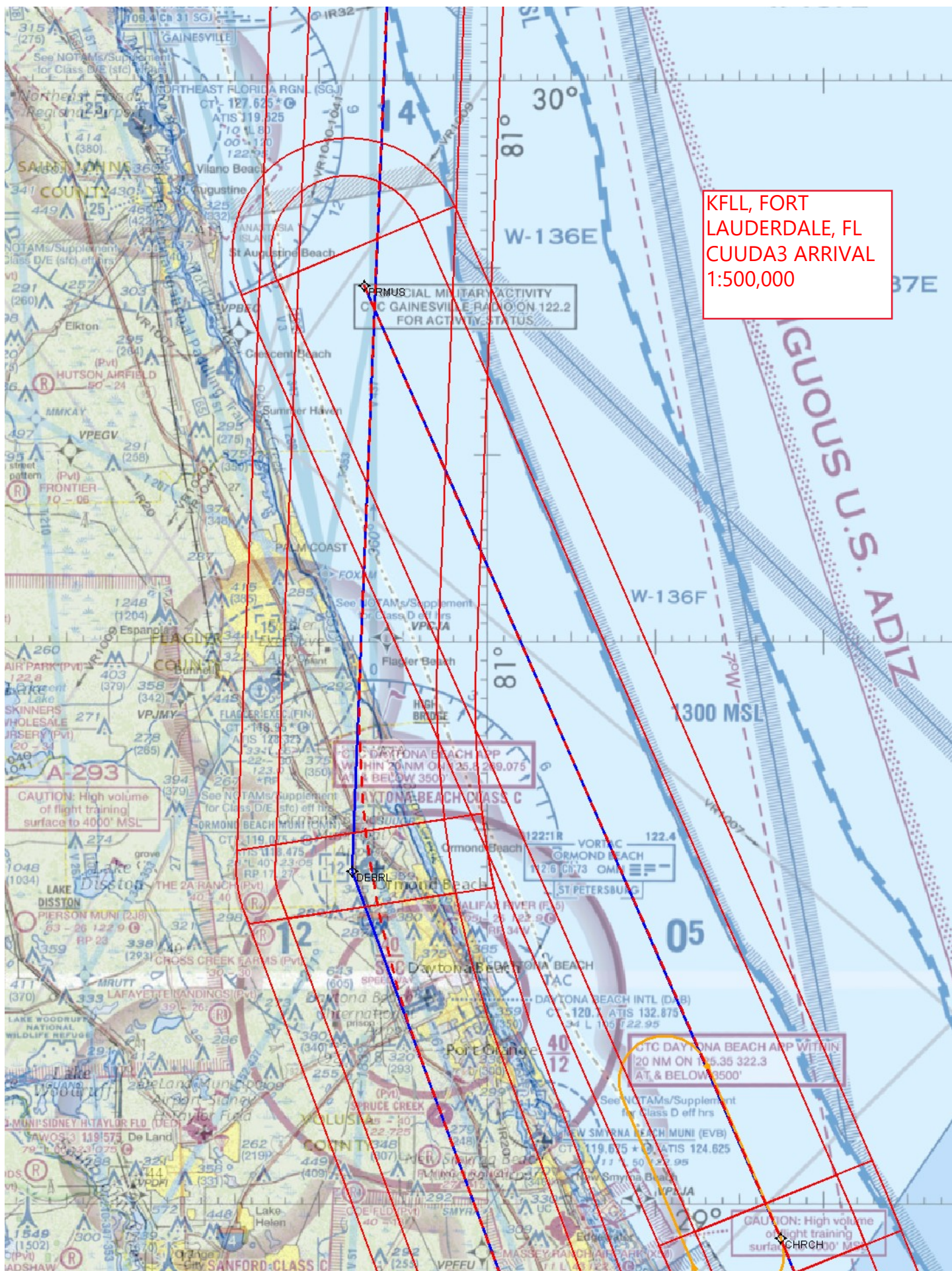
2700 MSL

W-136E

2700 MSL  
1300 MSL

W-137E







KFLL, FORT  
LAUDERDALE, FL  
CUUDA3 ARRIVAL  
1:500,000

CHRC TO  
12-002595

~~CTC ORLANDO APP WITHIN  
20 NM OF 119-775 351.9  
AT & BELOW 3500'~~

## EXAMPLES OF CLASS C ALTITUDES

- Ceiling is to but not including floor of CLASS B
- Floor in hundreds of feet MSL

V3, V437 and V533  
excluded within  
R-2934 R-2935

See NOTAMS/Supplement  
for Class D off hrs  
Class D excluded when

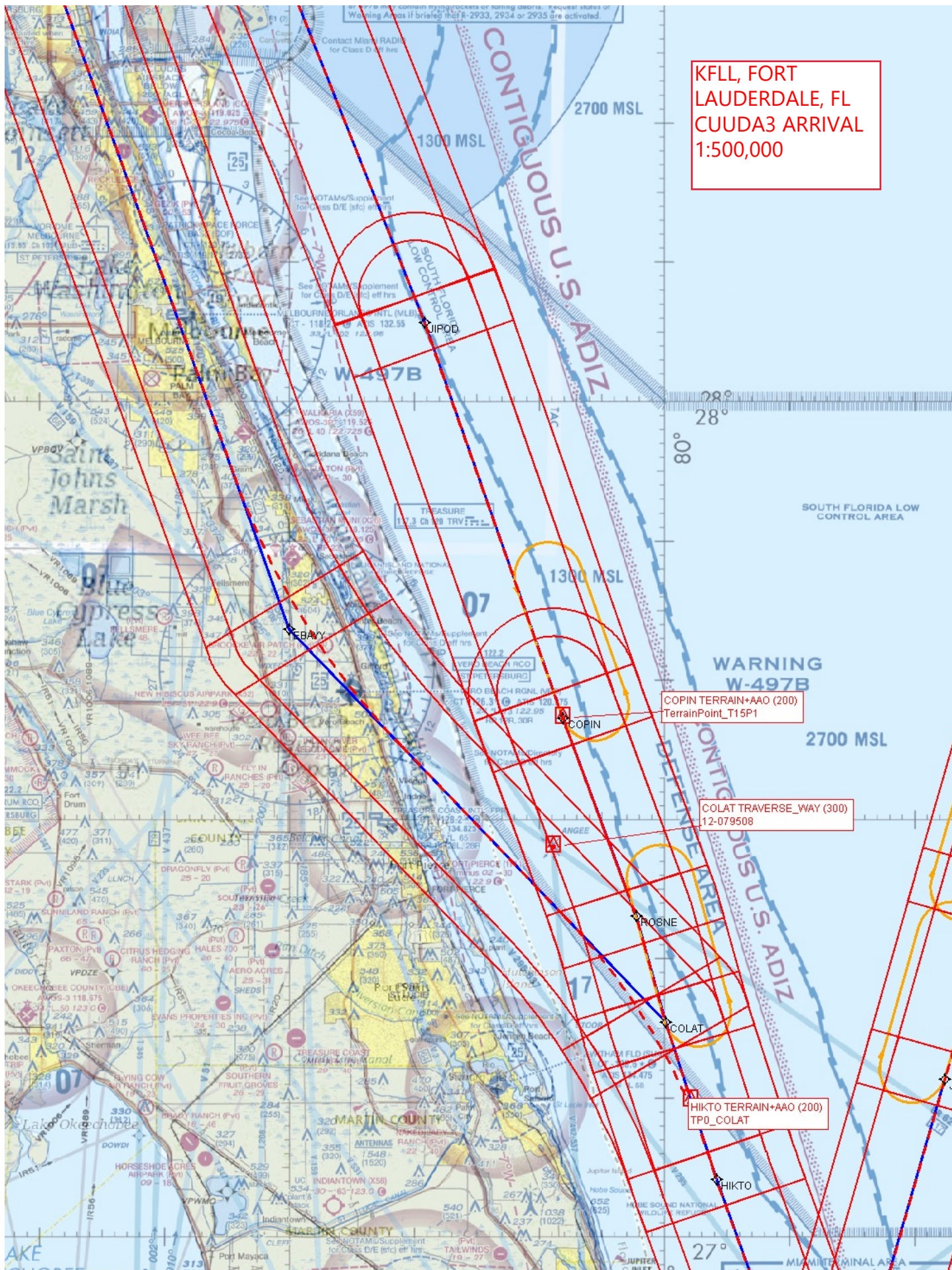
R-2932  
R-2933  
CAPE CANAVERAL SPACE FORCE  
STATION SKID STRIP (XMR)  
CT - 118.625 \* 143.15 \*  
ASOS 118.325  
72 ° L 10

**CAUTION:** If R-293 or 197B may contain Warning Areas if bi

Contact Miami RADIO  
for Class D off hrs

See NOTAMs/Supplement  
for Class D/E (sf) eff hrs





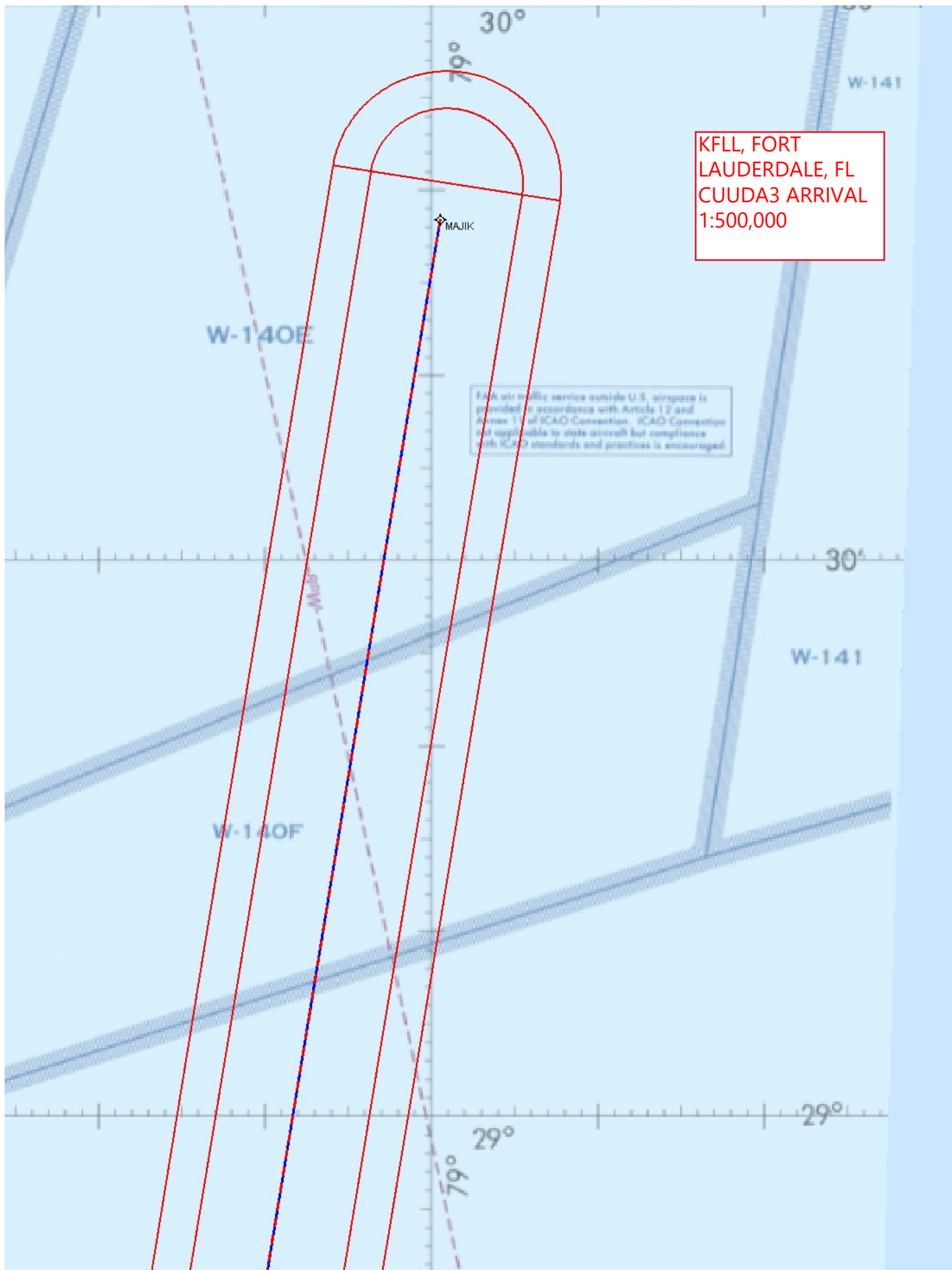
KFLL, FORT  
LAUDERDALE, FL  
CUUDA3 ARRIVAL  
1:500,000

COPIN TERRAIN+AAO (200)  
TerrainPoint\_T15P1

COLAT TRAVERSE\_WAY (300)  
12-079508

HIKTO TERRAIN+AAO (200)  
TP0\_COLAT





KFLA, FORT  
LAUDERDALE, FL  
CUUDA3 ARRIVAL  
1:500,000

FRA air traffic service outside U.S. airspace is  
provided in accordance with Article 12 and  
Annex 13 of ICAO Convention. ICAO Convention  
not applicable to state aircraft but compliance  
with ICAO standards and practices is encouraged.

KFLL, FORT  
LAUDERDALE, FL  
CUUDA3 ARRIVAL  
1:500,000

SOUTH FLORIDA LOW  
CONTROL AREA

ARNING  
497B

00)

2700 MSL

Warning: National Defense Operating Areas  
Operations hazardous to the flight of aircraft  
conducted within these areas.

RSE\_WAY (300)

U.S. ADIZ

BRDMN

JUNIX

AAO (200)

28

79°

KFLL, FORT  
LAUDERDALE, FL  
CUUDA3 ARRIVAL  
1:500,000

Warning: National Defense Operating Area  
Operations hazardous to the right of aircraft  
conducted within these areas.

W-497B

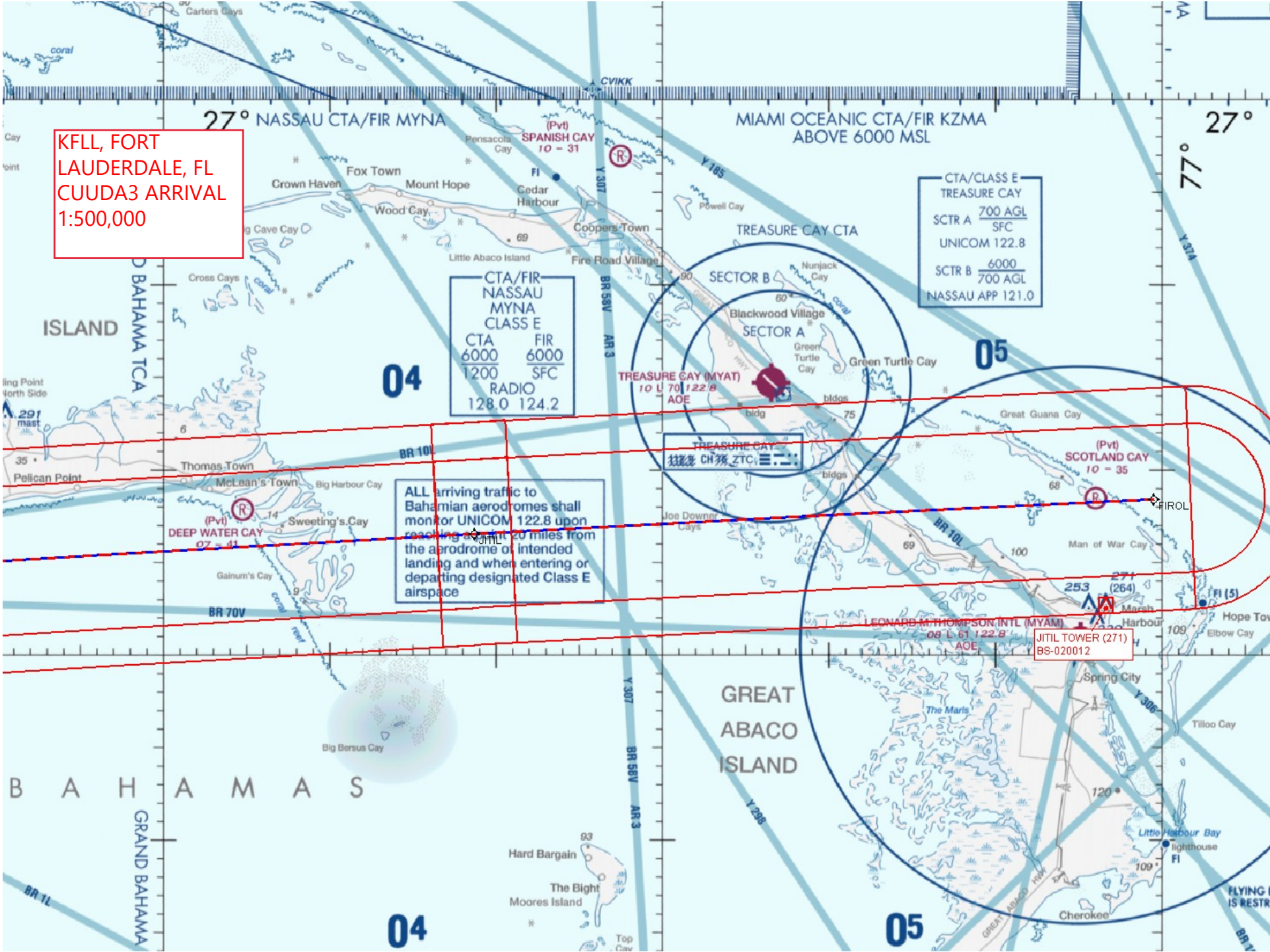
AYBID

SOUTH FLORIDA  
LOW CONTROL AREA

2700 MSL



KFLL, FORT  
LAUDERDALE, FL  
CUUDA3 ARRIVAL  
1:500,000





KFLL, FORT  
LAUDERDALE, FL  
CUUDA3 ARRIVAL  
1:500,000

TCA/CLASS D  
GRAND BAHAMA  
6000  
1500  
FREEPORT  
APP  
126.5

NASSAU CTA/FIR MYNA  
GRAND BAHAMA TCA  
[CTA/CLASS E-  
NASSAU  
6000  
1200  
RADIO  
128.0 124.2

REPEE TOWER (425)  
BS-000001

MUNRO CRANE (437)  
BS-020020

126.9 VOR-DME  
FREEPORT  
113.2 Ch 79 ZFP

~~II OCEANIC CENTER~~  
FL 240  
SFC  
133.4 263.1

~~GRAND BAHAMA INTL (MYGF)  
CT - 118.5\*  
AWOS-3 119.275  
06 L 110 / 23.0  
AOE~~



