

## DME DME Assessment Results for RATPK1 path KLAS:RW01L:DER\_JENFR

### Results Summary

Flyability:	Completed
DME/DME:	Completed - No Critical DMEs
Name:	Bob CTR Graham
Project File:	C:\Users\Bob CTR Graham\Desktop\AREA NAV Projects and TARGETS Files\LAS METROPLEX\KLAS FINAL PACKAGES\RATPK\20190909_KLAS RATPK.tgs
Output File:	C:\Users\Bob CTR Graham\Desktop\AREA NAV Projects and TARGETS Files\LAS METROPLEX\KLAS FINAL PACKAGES\RATPK\KLAS [IFPA] RATPK1 20190910_1551 MST\KLAS-RW01L-DER_JENFR\KLAS RATPK1 SID KLAS RW01L JENFR 20190910_1551 MST.pdf
Procedure Name:	RATPK1
Software: DmeDmePlugin:	5.6.0
Date/Time:	09/10/2019 15:51 MST
Databases:	DTED Level o MAX

### Failures

No Failures

### Warnings

No Warnings

### Notes For Flight Check

None

### Flight Plan

Name	Type	Lat/Lon	Altitude (ft)	VNAV Mode	Ground Speed (kts)	Turn Type	Leg Type
KLAS:RW01L:DER	WP	N36° 05' 51.77", W115° 09' 27.19"	2088.5	VNAV	130	FLY_BY	TF
KLAS:RW01L-VI End	WP	N36° 07' 33.03", W115° 08' 29.19"	2683.2	VNAV	145	FLY_BY	TF
KYBAD	WP	N36° 08' 38.95", W114° 57' 32.45"	6000	VNAV	200	FLY_BY	TF
JENFR	WP	N36° 11' 46.11", W114° 52' 52.04"	6980.2	VNAV	200	FLY_BY	TF
Climb Gradient: 320.0 ft/NM up to 5000.0 ft MSL 200.0 ft/NM							

### Flyability

Flight Type:	SID
Selected Airport:	KLAS [IFPA]
Climb Gradient:	None assigned
Speeds:	130 at the Runway DER
	145 at the end of the VA or VI leg
	200 Ground Speed to 11000 FT
	240 Ground Speed to 18000 FT
	260 Ground Speed to 24000 FT
	340 Ground Speed above 24000 FT
Descent During a Turn:	Allowed
VNAV Mode:	Flight Plan

## DME DME Assessment Results for RATPK1 path KLAS:RW01L:DER\_JENFR

DME/DME	
RNP:	RNP 2
Flight Mode:	Manual
Line of Sight (DTED Level 0 Max):	Evaluated
Inertial Drift:	Enabled
Initial Drift:	0.558 NM
INS Drift Rate:	8.0 NM/Hour
Range Mode:	OSV
RNP Edges:	Evaluated
Min DME Range:	3.0 NM
DME Types:	DME, VOR-DME, VORTAC
DME Include Angles:	30 to 150
Critical DMEs:	Allowed
DoD Facilities:	Not included
Foreign Facilities:	Not included
High DMEs:	Included
Low DMEs:	Included
Terminal DMEs:	Included
Flight Check DMEs:	Not selected
Higher Altitudes:	Not Evaluated
Near Maximum Altitude:	Not Evaluated
Automatic ESVs:	Not enabled
Disabled DMEs:	None

DME/DME (Continued)										
DMEs Used										
#	Name	Lat/Lon	MAGVAR	Range	Type	Source	Critical	Status	Time	Distance
1	LAS	N36° 04' 46.93", W115° 09' 35.27"	15.0 E	130	H	IFPA	NO	Enabled	30.9 %	37.9 %
2	BLD	N35° 59' 44.84", W114° 51' 48.88"	15.0 E	130	H	IFPA	NO	Enabled	30.9 %	37.9 %

Flight Check DME Selection						
Distance [NM]	Selected DMEs					Alternate
0.0						
9.7	LAS	BLD				

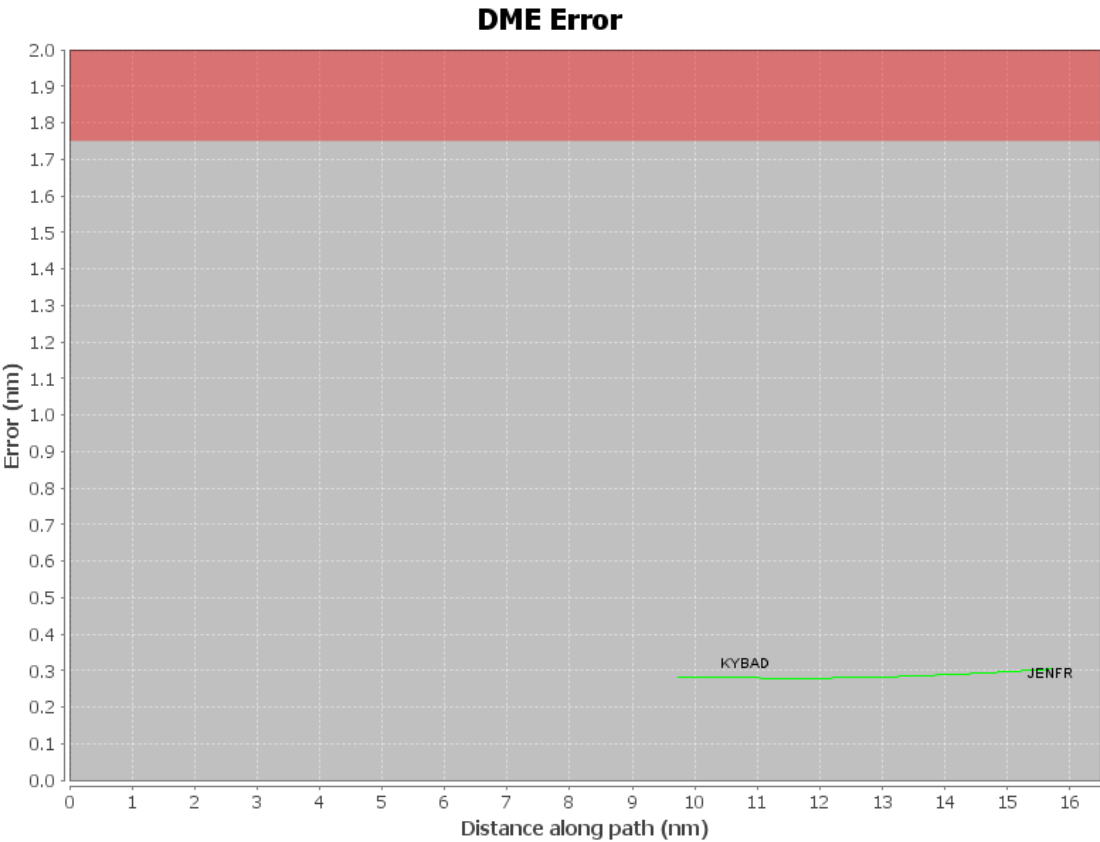
# DME DME Assessment Results for RATPK1 path KLAS:RW01L:DER\_JENFR

Inertial Drift Segments			
#	Start Location	End Location	Length [NM]
1	N36° 04' 35.07", W115° 07' 13.23"	N36° 04' 27.26", W115° 10' 02.96"	2.2903
2	N36° 04' 25.36", W115° 10' 04.05"	N35° 55' 21.62", W114° 57' 06.08"	13.8641
3	N36° 41' 00.59", W114° 20' 51.51"	N36° 42' 59.45", W114° 19' 19.23"	2.3337
4	N36° 49' 46.80", W114° 14' 02.22"	N36° 56' 50.87", W114° 08' 31.02"	8.3343
5	N36° 04' 24.99", W115° 03' 55.43"	N36° 03' 24.88", W114° 57' 34.20"	5.2335
6	N36° 02' 55.02", W114° 54' 25.66"	N36° 04' 25.06", W115° 09' 41.16"	12.4271
7	N36° 04' 25.06", W115° 09' 43.75"	N36° 08' 31.30", W114° 58' 49.20"	9.7234
8	N36° 09' 10.33", W115° 18' 11.41"	N36° 11' 46.11", W114° 52' 52.04"	20.6078
9	N36° 04' 35.14", W115° 04' 57.21"	N36° 03' 24.78", W114° 57' 32.74"	6.1025
10	N36° 02' 55.02", W114° 54' 25.66"	N36° 04' 31.17", W115° 10' 13.31"	12.8695
11	N36° 04' 29.26", W115° 10' 14.41"	N36° 05' 51.77", W115° 09' 27.19"	1.5152
12	N36° 05' 53.71", W115° 09' 26.07"	N36° 08' 31.28", W114° 58' 49.38"	8.9661
13	N36° 04' 25.17", W115° 07' 30.36"	N36° 30' 59.93", W114° 38' 51.82"	35.2089
14	N36° 37' 09.02", W114° 39' 54.26"	N36° 39' 35.85", W114° 40' 19.15"	2.4701
15	N36° 03' 32.07", W115° 10' 47.12"	N36° 11' 46.00", W115° 11' 11.26"	8.2396
16	N36° 11' 46.10", W115° 09' 55.78"	N36° 11' 46.15", W115° 09' 13.32"	0.5711
17	N36° 02' 55.02", W114° 54' 25.66"	N36° 05' 54.88", W115° 09' 12.81"	12.3225
18	N36° 05' 56.83", W115° 09' 11.69"	N36° 11' 26.47", W115° 12' 12.69"	6.0105
19	N37° 17' 24.95", W114° 46' 47.20"	N37° 45' 42.30", W114° 51' 41.79"	28.5593
20	N38° 06' 11.48", W114° 55' 17.51"	N36° 22' 04.14", W114° 37' 21.47"	105.1087
21	N36° 03' 30.07", W115° 10' 35.68"	N36° 04' 34.92", W115° 10' 12.69"	1.1244

Available DMEs by Waypoints		
Waypoint Before	Waypoint After	DME List
KLAS:RW01L:DER	KLAS:RW01L-VI End	
KLAS:RW01L-VI End	KYBAD	BLD, LAS
KYBAD	JENFR	BLD, LAS

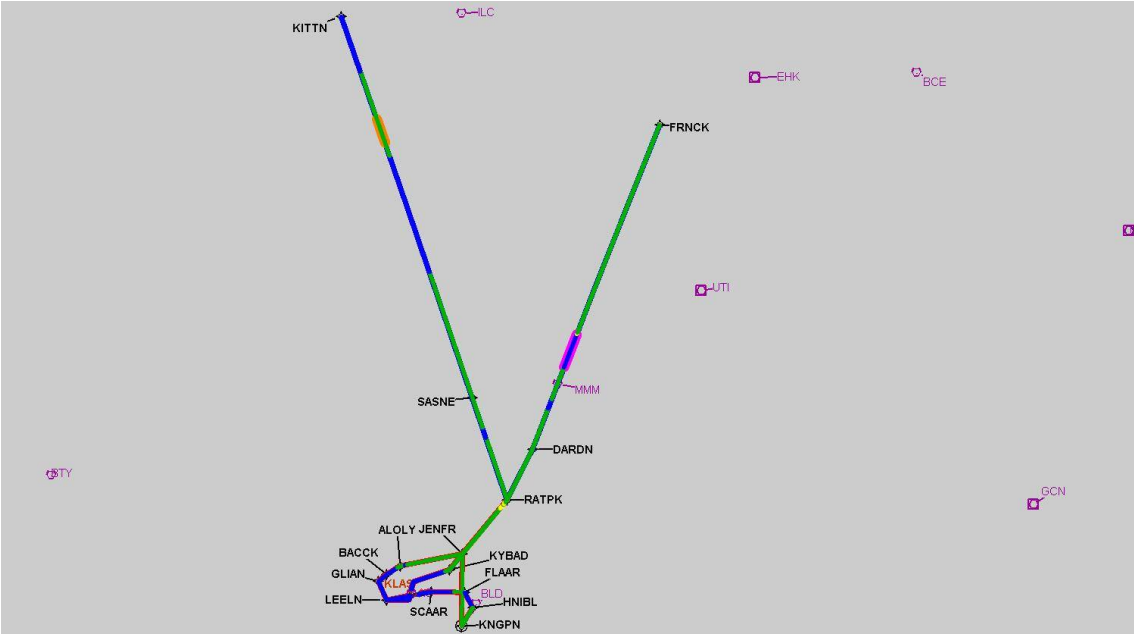
# DME DME Assessment Results for RATPK1 path KLAS:RW01L:DER\_JENFR

User Data Files								
#	File Name							
1	UserDMEsKLAS [IFPA] RATPK1 SID_20190904_1754 MST.udt							
User DMEs								
#	Name	Lat/Lon	MAGVAR	Range	Elevation [ft]	Frequency	Replaces	Status
1	UDT ESV UTI UTI [IFPA]	N37° 01' 03.43", W113° 31' 04.44"	12.0 E	25	2848	108.6	UDT ESV UTI	
ESV:		Bearing [True]: 240.0° to 357.0° Bearing [Mag]: 228.0° to 345.0°				Arc Distance: Out to 45.0 NM Altitude: 10800.0 to 14600.0 ft		
2	UDT ESV ILC ILC [IFPA]	N38° 15' 00.69", W114° 23' 39.22"	16.0 E	130	9347.1	116.3	UDT ESV ILC	
ESV:		Bearing [True]: 146.0° to 156.0° Bearing [Mag]: 130.0° to 140.0°				Arc Distance: Out to 77.0 NM Altitude: 12900.0 to 23900.0 ft		
3	UDT ESV PGS PGS [IFPA]	N35° 37' 28.96", W113° 32' 40.08"	15.0 E	130	4760	112.0	UDT ESV PGS	
ESV:		Bearing [True]: 323.0° to 354.0° Bearing [Mag]: 308.0° to 339.0°				Arc Distance: Out to 118.0 NM Altitude: 11900.0 to 14800.0 ft		
4	UDT ESV EED EED [IFPA]	N34° 45' 57.62", W114° 28' 26.77"	15.0 E	130	689	115.2	UDT ESV EED	
ESV:		Bearing [True]: 239.0° to 5.0° Bearing [Mag]: 224.0° to 350.0°				Arc Distance: Out to 99.0 NM Altitude: 7200.0 to 13100.0 ft		
5	UDT ESV LAS LAS [IFPA]	N36° 04' 46.93", W115° 09' 35.27"	15.0 E	130	2158.8	116.9	UDT ESV LAS	
ESV:		Bearing [True]: 44.0° to 139.0° Bearing [Mag]: 29.0° to 124.0°				Arc Distance: Out to 115.0 NM Altitude: 10000.0 to 22000.0 ft		
6	UDT ESV PGS PGS [IFPA]	N35° 37' 28.96", W113° 32' 40.08"	15.0 E	130	4760	112.0	UDT ESV PGS	
ESV:		Bearing [True]: 298.0° to 46.0° Bearing [Mag]: 283.0° to 31.0°				Arc Distance: Out to 83.0 NM Altitude: 9900.0 to 20000.0 ft		
7	UDT ESV BLD BLD [IFPA]	N35° 59' 44.84", W114° 51' 48.88"	15.0 E	130	3641	116.7	UDT ESV BLD	
ESV:		Bearing [True]: 349.0° to 34.0° Bearing [Mag]: 334.0° to 19.0°				Arc Distance: Out to 127.0 NM Altitude: 12600.0 to 18900.0 ft		
8	UDT ESV ILC ILC [IFPA]	N38° 15' 00.69", W114° 23' 39.22"	16.0 E	130	9347.1	116.3	UDT ESV ILC	
ESV:		Bearing [True]: 79.0° to 171.0° Bearing [Mag]: 63.0° to 155.0°				Arc Distance: Out to 76.0 NM Altitude: 12900.0 to 24000.0 ft		
9	UDT ESV LAS LAS [IFPA]	N36° 04' 46.93", W115° 09' 35.27"	15.0 E	130	2158.8	116.9	UDT ESV LAS	
ESV:		Bearing [True]: 12.0° to 41.0° Bearing [Mag]: 357.0° to 26.0°				Arc Distance: Out to 74.0 NM Altitude: 11900.0 to 14500.0 ft		
10	UDT ESV EHK EHK [IFPA]	N37° 47' 14.39", W113° 04' 05.63"	16.0 E	130	5482.3	117.3	UDT ESV EHK	
ESV:		Bearing [True]: 275.0° to 284.0° Bearing [Mag]: 259.0° to 268.0°				Arc Distance: Out to 94.0 NM Altitude: 17700.0 to 18900.0 ft		



DME DME Assessment Results for RATPK1 path KLAS:RW01L:DER\_JENFR

Graphic Depiction 1



## DME DME Assessment Results for RATPK1 path KLAS:RW01R:DER\_KYBAD

### Results Summary

Flyability:	Completed
DME/DME:	Completed - No Critical DMEs
Name:	Bob CTR Graham
Project File:	C:\Users\Bob CTR Graham\Desktop\AREA NAV Projects and TARGETS Files\LAS METROPLEX\KLAS FINAL PACKAGES\RATPK\20190909_KLAS RATPK.tgs
Output File:	C:\Users\Bob CTR Graham\Desktop\AREA NAV Projects and TARGETS Files\LAS METROPLEX\KLAS FINAL PACKAGES\RATPK\KLAS [IFPA] RATPK1 20190910_1551 MST\KLAS-RW01R-DER_KYBAD\KLAS RATPK1 SID KLAS RW01R KYBAD 20190910_1551 MST.pdf
Procedure Name:	RATPK1
Software: DmeDmePlugin:	5.6.0
Date/Time:	09/10/2019 15:51 MST
Databases:	DTED Level o MAX

### Failures

No Failures

### Warnings

No Warnings

### Notes For Flight Check

None

### Flight Plan

Name	Type	Lat/Lon	Altitude (ft)	VNAV Mode	Ground Speed (kts)	Turn Type	Leg Type
KLAS:RW01R:DER	WP	N36° 05' 54.88", W115° 09' 12.81"	2077.6	VNAV	130	FLY_BY	TF
KLAS:RW01R-VI End	WP	N36° 07' 34.38", W115° 08' 15.82"	2680.2	VNAV	145	FLY_BY	TF
KYBAD	WP	N36° 08' 38.95", W114° 57' 32.45"	6000	VNAV	200	FLY_BY	TF
Climb Gradient: 330.0 ft/NM up to 5000.0 ft MSL 200.0 ft/NM							

### Flyability

Flight Type:	SID
Selected Airport:	KLAS [IFPA]
Climb Gradient:	None assigned
Speeds:	130 at the Runway DER
	145 at the end of the VA or VI leg
	200 Ground Speed to 11000 FT
	240 Ground Speed to 18000 FT
	260 Ground Speed to 24000 FT
	340 Ground Speed above 24000 FT
Descent During a Turn:	Allowed
VNAV Mode:	Flight Plan

# DME DME Assessment Results for RATPK1 path KLAS:RW01R:DER\_KYBAD

DME/DME	
RNP:	RNP 2
Flight Mode:	Manual
Line of Sight (DTED Level 0 Max):	Evaluated
Inertial Drift:	Enabled
Initial Drift:	0.558 NM
INS Drift Rate:	8.0 NM/Hour
Range Mode:	OSV
RNP Edges:	Evaluated
Min DME Range:	3.0 NM
DME Types:	DME, VOR-DME, VORTAC
DME Include Angles:	30 to 150
Critical DMEs:	Allowed
DoD Facilities:	Not included
Foreign Facilities:	Not included
High DMEs:	Included
Low DMEs:	Included
Terminal DMEs:	Included
Flight Check DMEs:	Not selected
Higher Altitudes:	Not Evaluated
Near Maximum Altitude:	Not Evaluated
Automatic ESVs:	Not enabled
Disabled DMEs:	None

DME/DME (Continued)										
DMEs Used										
#	Name	Lat/Lon	MAGVAR	Range	Type	Source	Critical	Status	Time	Distance
1	LAS	N36° 04' 46.93", W115° 09' 35.27"	15.0 E	130	H	IFPA	NO	Enabled	7.8 %	9.9 %
2	BLD	N35° 59' 44.84", W114° 51' 48.88"	15.0 E	130	H	IFPA	NO	Enabled	7.8 %	9.9 %

Flight Check DME Selection						
Distance [NM]	Selected DMEs					Alternate
0.0						
9.5	LAS	BLD				



# DME DME Assessment Results for RATPK1 path KLAS:RW01R:DER\_KYBAD

Inertial Drift Segments			
#	Start Location	End Location	Length [NM]
1	N36° 04' 35.07", W115° 07' 13.23"	N36° 04' 27.26", W115° 10' 02.96"	2.2903
2	N36° 04' 25.36", W115° 10' 04.05"	N35° 55' 21.62", W114° 57' 06.08"	13.8641
3	N36° 41' 00.59", W114° 20' 51.51"	N36° 42' 59.45", W114° 19' 19.23"	2.3337
4	N36° 49' 46.80", W114° 14' 02.22"	N36° 56' 50.87", W114° 08' 31.02"	8.3343
5	N36° 04' 24.99", W115° 03' 55.43"	N36° 03' 24.88", W114° 57' 34.20"	5.2335
6	N36° 02' 55.02", W114° 54' 25.66"	N36° 04' 25.06", W115° 09' 41.16"	12.4271
7	N36° 04' 25.06", W115° 09' 43.75"	N36° 08' 31.30", W114° 58' 49.20"	9.7234
8	N36° 09' 10.33", W115° 18' 11.41"	N36° 11' 46.11", W114° 52' 52.04"	20.6078
9	N36° 04' 35.14", W115° 04' 57.21"	N36° 03' 24.78", W114° 57' 32.74"	6.1025
10	N36° 02' 55.02", W114° 54' 25.66"	N36° 04' 31.17", W115° 10' 13.31"	12.8695
11	N36° 04' 29.26", W115° 10' 14.41"	N36° 05' 51.77", W115° 09' 27.19"	1.5152
12	N36° 05' 53.71", W115° 09' 26.07"	N36° 08' 31.28", W114° 58' 49.38"	8.9661
13	N36° 04' 25.17", W115° 07' 30.36"	N36° 30' 59.93", W114° 38' 51.82"	35.2089
14	N36° 37' 09.02", W114° 39' 54.26"	N36° 39' 35.85", W114° 40' 19.15"	2.4701
15	N36° 03' 32.07", W115° 10' 47.12"	N36° 11' 46.00", W115° 11' 11.26"	8.2396
16	N36° 11' 46.10", W115° 09' 55.78"	N36° 11' 46.15", W115° 09' 13.32"	0.5711
17	N36° 02' 55.02", W114° 54' 25.66"	N36° 05' 54.88", W115° 09' 12.81"	12.3225
18	N36° 05' 56.83", W115° 09' 11.69"	N36° 11' 26.47", W115° 12' 12.69"	6.0105
19	N37° 17' 24.95", W114° 46' 47.20"	N37° 45' 42.30", W114° 51' 41.79"	28.5593
20	N38° 06' 11.48", W114° 55' 17.51"	N36° 22' 04.14", W114° 37' 21.47"	105.1087
21	N36° 03' 30.07", W115° 10' 35.68"	N36° 04' 34.92", W115° 10' 12.69"	1.1244

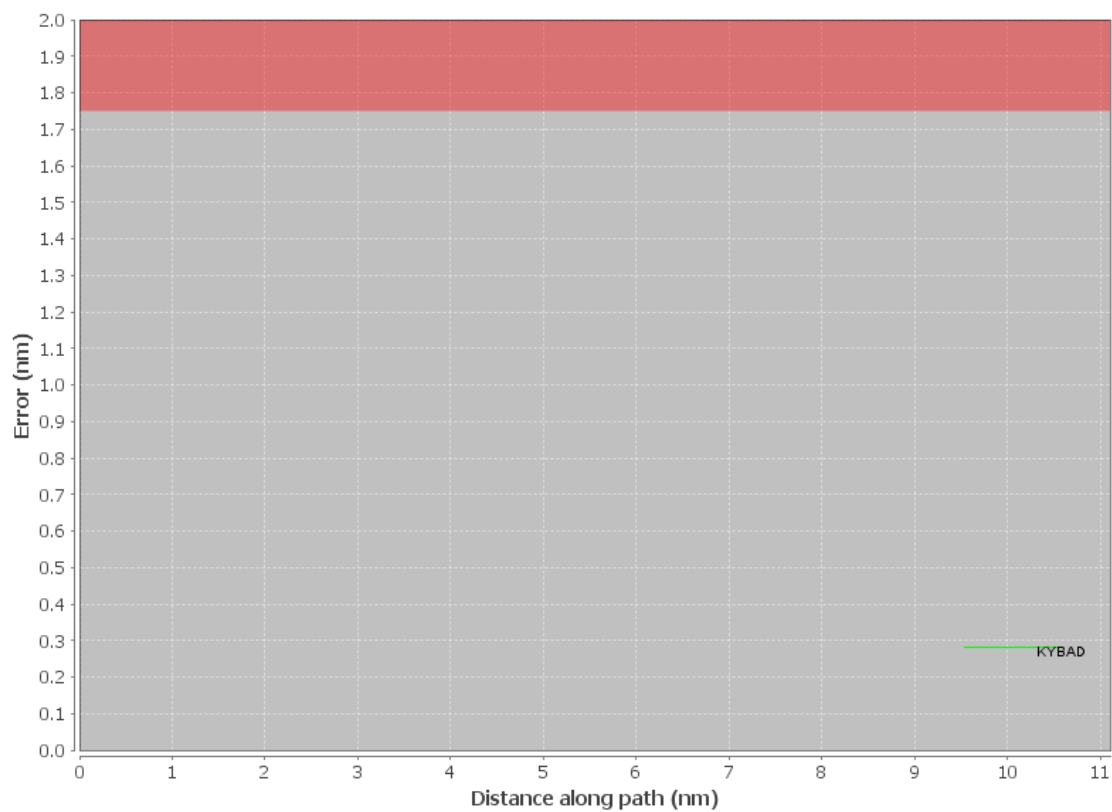
Available DMEs by Waypoints		
Waypoint Before	Waypoint After	DME List
KLAS:RW01R:DER	KLAS:RW01R-VI End	
KLAS:RW01R-VI End	KYBAD	BLD, LAS

# DME DME Assessment Results for RATPK1 path KLAS:RW01R:DER\_KYBAD

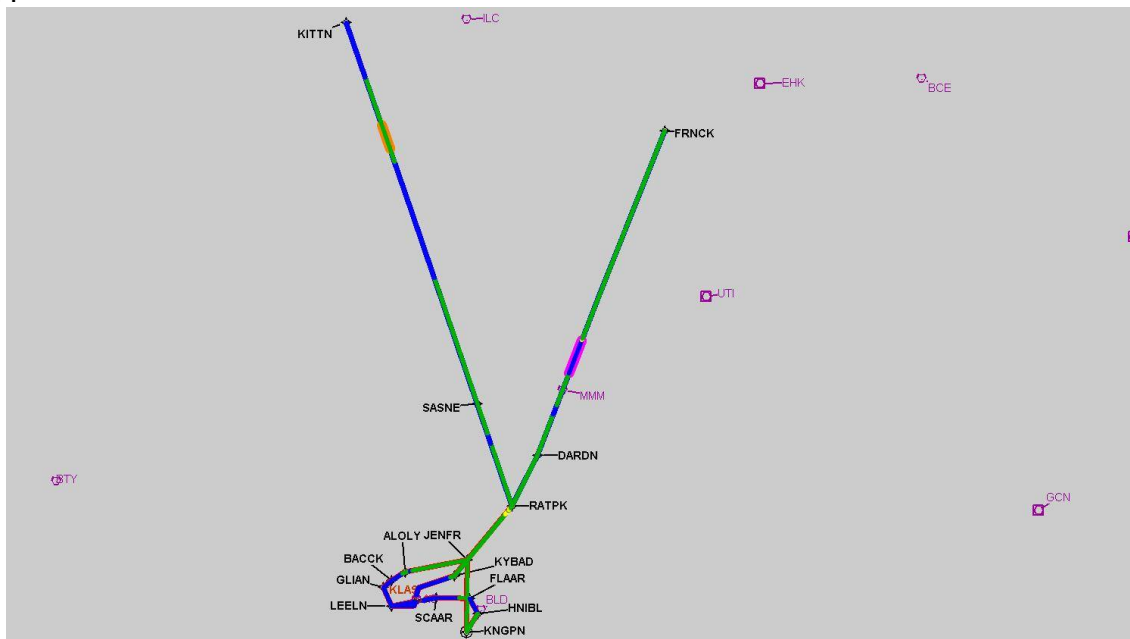
User Data Files								
#	File Name							
1	UserDMEsKLAS [IFPA] RATPK1 SID_20190904_1754 MST.udt							
User DMEs								
#	Name	Lat/Lon	MAGVAR	Range	Elevation [ft]	Frequency	Replaces	Status
1	UDT ESV UTI UTI [IFPA]	N37° 01' 03.43", W113° 31' 04.44"	12.0 E	25	2848	108.6	UDT ESV UTI	
ESV:		Bearing [True]: 240.0° to 357.0° Bearing [Mag]: 228.0° to 345.0°				Arc Distance: Out to 45.0 NM Altitude: 10800.0 to 14600.0 ft		
2	UDT ESV ILC ILC [IFPA]	N38° 15' 00.69", W114° 23' 39.22"	16.0 E	130	9347.1	116.3	UDT ESV ILC	
ESV:		Bearing [True]: 146.0° to 156.0° Bearing [Mag]: 130.0° to 140.0°				Arc Distance: Out to 77.0 NM Altitude: 12900.0 to 23900.0 ft		
3	UDT ESV PGS PGS [IFPA]	N35° 37' 28.96", W113° 32' 40.08"	15.0 E	130	4760	112.0	UDT ESV PGS	
ESV:		Bearing [True]: 323.0° to 354.0° Bearing [Mag]: 308.0° to 339.0°				Arc Distance: Out to 118.0 NM Altitude: 11900.0 to 14800.0 ft		
4	UDT ESV EED EED [IFPA]	N34° 45' 57.62", W114° 28' 26.77"	15.0 E	130	689	115.2	UDT ESV EED	
ESV:		Bearing [True]: 239.0° to 5.0° Bearing [Mag]: 224.0° to 350.0°				Arc Distance: Out to 99.0 NM Altitude: 7200.0 to 13100.0 ft		
5	UDT ESV LAS LAS [IFPA]	N36° 04' 46.93", W115° 09' 35.27"	15.0 E	130	2158.8	116.9	UDT ESV LAS	
ESV:		Bearing [True]: 44.0° to 139.0° Bearing [Mag]: 29.0° to 124.0°				Arc Distance: Out to 115.0 NM Altitude: 10000.0 to 22000.0 ft		
6	UDT ESV PGS PGS [IFPA]	N35° 37' 28.96", W113° 32' 40.08"	15.0 E	130	4760	112.0	UDT ESV PGS	
ESV:		Bearing [True]: 298.0° to 46.0° Bearing [Mag]: 283.0° to 31.0°				Arc Distance: Out to 83.0 NM Altitude: 9900.0 to 20000.0 ft		
7	UDT ESV BLD BLD [IFPA]	N35° 59' 44.84", W114° 51' 48.88"	15.0 E	130	3641	116.7	UDT ESV BLD	
ESV:		Bearing [True]: 349.0° to 34.0° Bearing [Mag]: 334.0° to 19.0°				Arc Distance: Out to 127.0 NM Altitude: 12600.0 to 18900.0 ft		
8	UDT ESV ILC ILC [IFPA]	N38° 15' 00.69", W114° 23' 39.22"	16.0 E	130	9347.1	116.3	UDT ESV ILC	
ESV:		Bearing [True]: 79.0° to 171.0° Bearing [Mag]: 63.0° to 155.0°				Arc Distance: Out to 76.0 NM Altitude: 12900.0 to 24000.0 ft		
9	UDT ESV LAS LAS [IFPA]	N36° 04' 46.93", W115° 09' 35.27"	15.0 E	130	2158.8	116.9	UDT ESV LAS	
ESV:		Bearing [True]: 12.0° to 41.0° Bearing [Mag]: 357.0° to 26.0°				Arc Distance: Out to 74.0 NM Altitude: 11900.0 to 14500.0 ft		
10	UDT ESV EHK EHK [IFPA]	N37° 47' 14.39", W113° 04' 05.63"	16.0 E	130	5482.3	117.3	UDT ESV EHK	
ESV:		Bearing [True]: 275.0° to 284.0° Bearing [Mag]: 259.0° to 268.0°				Arc Distance: Out to 94.0 NM Altitude: 17700.0 to 18900.0 ft		

# DME DME Assessment Results for RATPK1 path KLAS:RW01R:DER\_KYBAD

## DME Error



### Graphic Depiction 1



## DME DME Assessment Results for RATPK1 path KLAS:RW08L:DER\_FLAAR

### Results Summary

Flyability:	Completed
DME/DME:	Completed - No Critical DMEs
Name:	Bob CTR Graham
Project File:	C:\Users\Bob CTR Graham\Desktop\AREA NAV Projects and TARGETS Files\LAS METROPLEX\KLAS FINAL PACKAGES\RATPK\20190909_KLAS RATPK.tgs
Output File:	C:\Users\Bob CTR Graham\Desktop\AREA NAV Projects and TARGETS Files\LAS METROPLEX\KLAS FINAL PACKAGES\RATPK\KLAS [IFPA] RATPK1 20190910_1551 MST\KLAS-RW08L-DER_FLAAR\KLAS RATPK1 SID KLAS RW08L FLAAR 20190910_1551 MST.pdf
Procedure Name:	RATPK1
Software: DmeDmePlugin:	5.6.0
Date/Time:	09/10/2019 15:51 MST
Databases:	DTED Level o MAX

### Failures

No Failures

### Warnings

No Warnings

### Notes For Flight Check

None

### Flight Plan

Name	Type	Lat/Lon	Altitude (ft)	VNAV Mode	Ground Speed (kts)	Turn Type	Leg Type
KLAS:RW08L:DER	WP	N36° 04' 35.06", W115° 07' 15.90"	2033	VNAV	130	FLY_BY	TF
KLAS:RW08L-VI End	WP	N36° 04' 35.14", W115° 04' 57.21"	2407.7	VNAV	145	FLY_BY	TF
FLAAR	WP	N36° 02' 55.02", W114° 54' 25.66"	6000	VNAV	230	FLY_BY	TF
Climb Gradient: 250.0 ft/NM up to 6500.0 ft MSL 200.0 ft/NM							

### Flyability

Flight Type:	SID
Selected Airport:	KLAS [IFPA]
Climb Gradient:	None assigned
Speeds:	130 at the Runway DER
	145 at the end of the VA or VI leg
	200 Ground Speed to 11000 FT
	240 Ground Speed to 18000 FT
	260 Ground Speed to 24000 FT
	340 Ground Speed above 24000 FT
Descent During a Turn:	Allowed
VNAV Mode:	Flight Plan

## DME DME Assessment Results for RATPK1 path KLAS:RW08L:DER\_FLAAR

DME/DME	
RNP:	RNP 2
Flight Mode:	Manual
Line of Sight (DTED Level 0 Max):	Evaluated
Inertial Drift:	Enabled
Initial Drift:	0.558 NM
INS Drift Rate:	8.0 NM/Hour
Range Mode:	OSV
RNP Edges:	Evaluated
Min DME Range:	3.0 NM
DME Types:	DME, VOR-DME, VORTAC
DME Include Angles:	30 to 150
Critical DMEs:	Allowed
DoD Facilities:	Not included
Foreign Facilities:	Not included
High DMEs:	Included
Low DMEs:	Included
Terminal DMEs:	Included
Flight Check DMEs:	Not selected
Higher Altitudes:	Not Evaluated
Near Maximum Altitude:	Not Evaluated
Automatic ESVs:	Not enabled
Disabled DMEs:	None

DME/DME (Continued)											
DMEs Used											
#	Name	Lat/Lon	MAGVAR	Range	Type	Source	Critical	Status	Time	Distance	
1	LAS	N36° 04' 46.93", W115° 09' 35.27"	15.0 E	130	H	IFPA	NO	Enabled	18.5 %	24 %	
2	BLD	N35° 59' 44.84", W114° 51' 48.88"	15.0 E	130	H	IFPA	NO	Enabled	18.5 %	24 %	

Flight Check DME Selection						
Distance [NM]	Selected DMEs					Alternate
0.0						
8.0	LAS	BLD				
10.6						

# DME DME Assessment Results for RATPK1 path KLAS:RW08L:DER\_FLAAAR

Inertial Drift Segments			
#	Start Location	End Location	Length [NM]
1	N36° 04' 35.07", W115° 07' 13.23"	N36° 04' 27.26", W115° 10' 02.96"	2.2903
2	N36° 04' 25.36", W115° 10' 04.05"	N35° 55' 21.62", W114° 57' 06.08"	13.8641
3	N36° 41' 00.59", W114° 20' 51.51"	N36° 42' 59.45", W114° 19' 19.23"	2.3337
4	N36° 49' 46.80", W114° 14' 02.22"	N36° 56' 50.87", W114° 08' 31.02"	8.3343
5	N36° 04' 24.99", W115° 03' 55.43"	N36° 03' 24.88", W114° 57' 34.20"	5.2335
6	N36° 02' 55.02", W114° 54' 25.66"	N36° 04' 25.06", W115° 09' 41.16"	12.4271
7	N36° 04' 25.06", W115° 09' 43.75"	N36° 08' 31.30", W114° 58' 49.20"	9.7234
8	N36° 09' 10.33", W115° 18' 11.41"	N36° 11' 46.11", W114° 52' 52.04"	20.6078
9	N36° 04' 35.14", W115° 04' 57.21"	N36° 03' 24.78", W114° 57' 32.74"	6.1025
10	N36° 02' 55.02", W114° 54' 25.66"	N36° 04' 31.17", W115° 10' 13.31"	12.8695
11	N36° 04' 29.26", W115° 10' 14.41"	N36° 05' 51.77", W115° 09' 27.19"	1.5152
12	N36° 05' 53.71", W115° 09' 26.07"	N36° 08' 31.28", W114° 58' 49.38"	8.9661
13	N36° 04' 25.17", W115° 07' 30.36"	N36° 30' 59.93", W114° 38' 51.82"	35.2089
14	N36° 37' 09.02", W114° 39' 54.26"	N36° 39' 35.85", W114° 40' 19.15"	2.4701
15	N36° 03' 32.07", W115° 10' 47.12"	N36° 11' 46.00", W115° 11' 11.26"	8.2396
16	N36° 11' 46.10", W115° 09' 55.78"	N36° 11' 46.15", W115° 09' 13.32"	0.5711
17	N36° 02' 55.02", W114° 54' 25.66"	N36° 05' 54.88", W115° 09' 12.81"	12.3225
18	N36° 05' 56.83", W115° 09' 11.69"	N36° 11' 26.47", W115° 12' 12.69"	6.0105
19	N37° 17' 24.95", W114° 46' 47.20"	N37° 45' 42.30", W114° 51' 41.79"	28.5593
20	N38° 06' 11.48", W114° 55' 17.51"	N36° 22' 04.14", W114° 37' 21.47"	105.1087
21	N36° 03' 30.07", W115° 10' 35.68"	N36° 04' 34.92", W115° 10' 12.69"	1.1244

Available DMEs by Waypoints		
Waypoint Before	Waypoint After	DME List
KLAS:RW08L:DER	KLAS:RW08L-VI End	
KLAS:RW08L-VI End	FLAAR	BLD, LAS

# DME DME Assessment Results for RATPK1 path KLAS:RW08L:DER\_FLAAAR

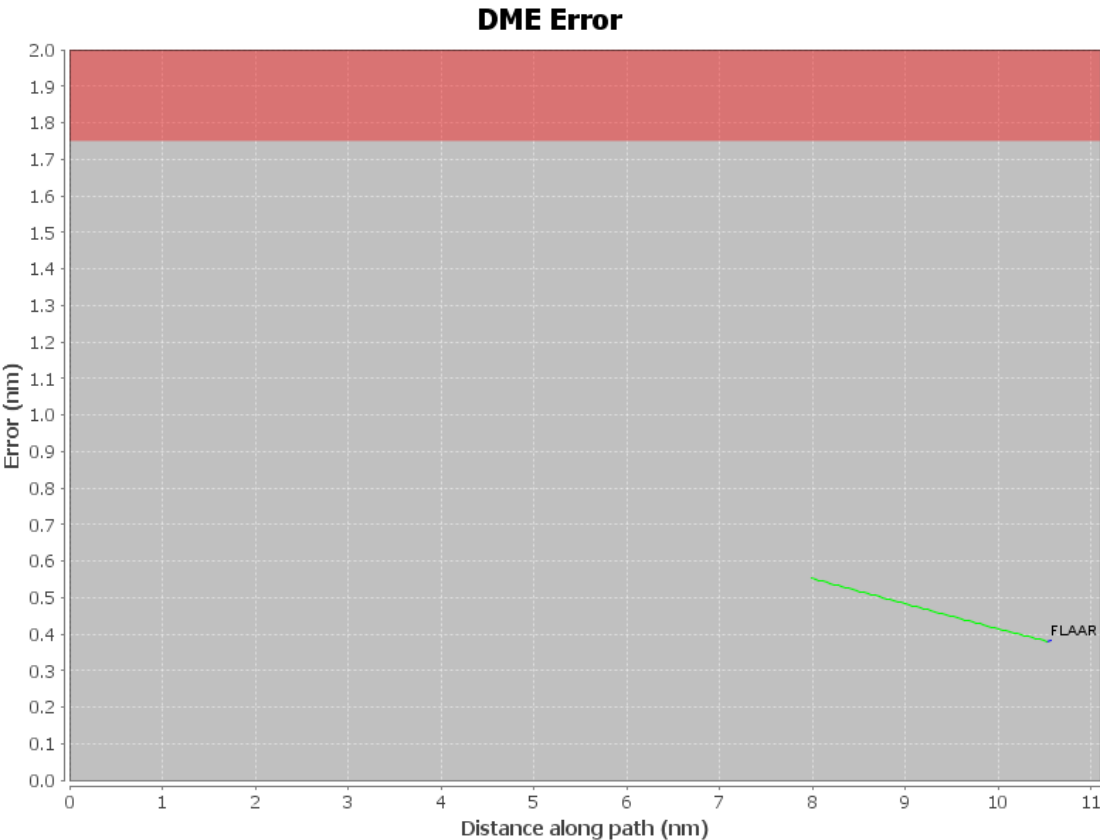
## User Data Files

#	File Name
1	UserDMEsKLAS [IFPA] RATPK1 SID_20190904_1754 MST.udt

## User DMEs

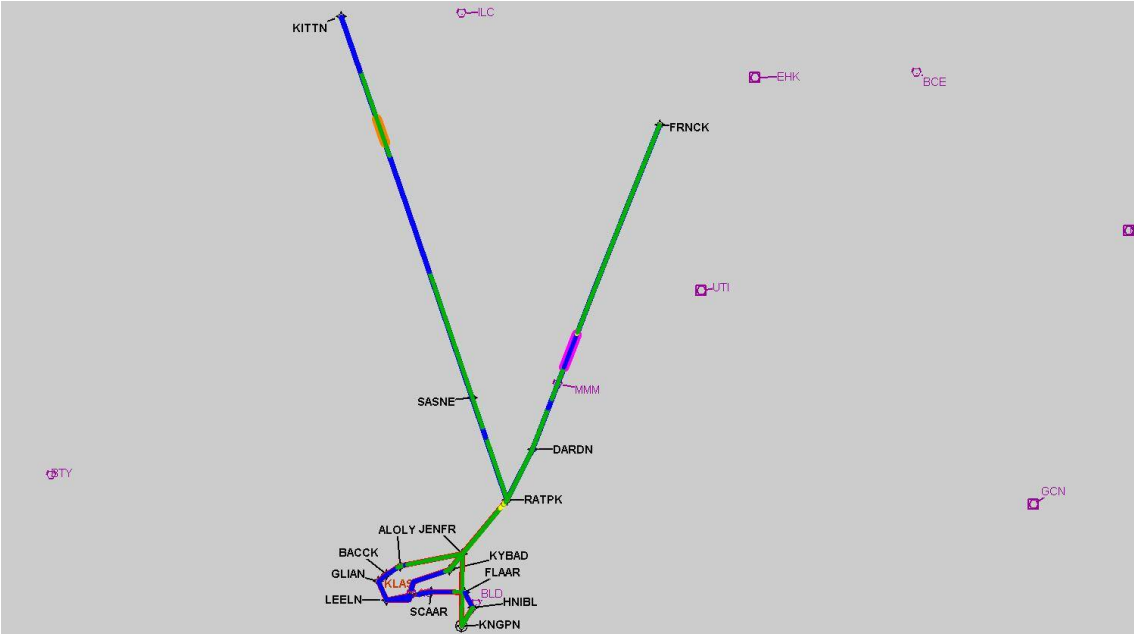
#	Name	Lat/Lon	MAGVAR	Range	Elevation [ft]	Frequency	Replaces	Status
1	UDT ESV UTI UTI [IFPA]	N37° 01' 03.43", W113° 31' 04.44"	12.0 E	25	2848	108.6	UDT ESV UTI	
ESV:		Bearing [True]: 240.0° to 357.0° Bearing [Mag]: 228.0° to 345.0°				Arc Distance: Out to 45.0 NM Altitude: 10800.0 to 14600.0 ft		
2	UDT ESV ILC ILC [IFPA]	N38° 15' 00.69", W114° 23' 39.22"	16.0 E	130	9347.1	116.3	UDT ESV ILC	
ESV:		Bearing [True]: 146.0° to 156.0° Bearing [Mag]: 130.0° to 140.0°				Arc Distance: Out to 77.0 NM Altitude: 12900.0 to 23900.0 ft		
3	UDT ESV PGS PGS [IFPA]	N35° 37' 28.96", W113° 32' 40.08"	15.0 E	130	4760	112.0	UDT ESV PGS	
ESV:		Bearing [True]: 323.0° to 354.0° Bearing [Mag]: 308.0° to 339.0°				Arc Distance: Out to 118.0 NM Altitude: 11900.0 to 14800.0 ft		
4	UDT ESV EED EED [IFPA]	N34° 45' 57.62", W114° 28' 26.77"	15.0 E	130	689	115.2	UDT ESV EED	
ESV:		Bearing [True]: 239.0° to 5.0° Bearing [Mag]: 224.0° to 350.0°				Arc Distance: Out to 99.0 NM Altitude: 7200.0 to 13100.0 ft		
5	UDT ESV LAS LAS [IFPA]	N36° 04' 46.93", W115° 09' 35.27"	15.0 E	130	2158.8	116.9	UDT ESV LAS	
ESV:		Bearing [True]: 44.0° to 139.0° Bearing [Mag]: 29.0° to 124.0°				Arc Distance: Out to 115.0 NM Altitude: 10000.0 to 22000.0 ft		
6	UDT ESV PGS PGS [IFPA]	N35° 37' 28.96", W113° 32' 40.08"	15.0 E	130	4760	112.0	UDT ESV PGS	
ESV:		Bearing [True]: 298.0° to 46.0° Bearing [Mag]: 283.0° to 31.0°				Arc Distance: Out to 83.0 NM Altitude: 9900.0 to 20000.0 ft		
7	UDT ESV BLD BLD [IFPA]	N35° 59' 44.84", W114° 51' 48.88"	15.0 E	130	3641	116.7	UDT ESV BLD	
ESV:		Bearing [True]: 349.0° to 34.0° Bearing [Mag]: 334.0° to 19.0°				Arc Distance: Out to 127.0 NM Altitude: 12600.0 to 18900.0 ft		
8	UDT ESV ILC ILC [IFPA]	N38° 15' 00.69", W114° 23' 39.22"	16.0 E	130	9347.1	116.3	UDT ESV ILC	
ESV:		Bearing [True]: 79.0° to 171.0° Bearing [Mag]: 63.0° to 155.0°				Arc Distance: Out to 76.0 NM Altitude: 12900.0 to 24000.0 ft		
9	UDT ESV LAS LAS [IFPA]	N36° 04' 46.93", W115° 09' 35.27"	15.0 E	130	2158.8	116.9	UDT ESV LAS	
ESV:		Bearing [True]: 12.0° to 41.0° Bearing [Mag]: 357.0° to 26.0°				Arc Distance: Out to 74.0 NM Altitude: 11900.0 to 14500.0 ft		
10	UDT ESV EHK EHK [IFPA]	N37° 47' 14.39", W113° 04' 05.63"	16.0 E	130	5482.3	117.3	UDT ESV EHK	
ESV:		Bearing [True]: 275.0° to 284.0° Bearing [Mag]: 259.0° to 268.0°				Arc Distance: Out to 94.0 NM Altitude: 17700.0 to 18900.0 ft		





DME DME Assessment Results for RATPK1 path KLAS:RW08L:DER\_FLAAR

Graphic Depiction 1



## DME DME Assessment Results for RATPK1 path KLAS:RW08R:DER\_KITTN

### Results Summary

Flyability:	Completed
DME/DME:	Completed - 2 Critical DMEs: ILC, BLD
Name:	Bob CTR Graham
Project File:	C:\Users\Bob CTR Graham\Desktop\AREA NAV Projects and TARGETS Files\LAS METROPLEX\KLAS FINAL PACKAGES\RATPK\20190909_KLAS RATPK.tgs
Output File:	C:\Users\Bob CTR Graham\Desktop\AREA NAV Projects and TARGETS Files\LAS METROPLEX\KLAS FINAL PACKAGES\RATPK\KLAS [IFPA] RATPK1 20190910_1551 MST\KLAS-RW08R-DER_KITTN\KLAS RATPK1 SID KLAS RW08R KITTN 20190910_1551 MST.pdf
Procedure Name:	RATPK1
Software: DmeDmePlugin:	5.6.0
Date/Time:	09/10/2019 15:51 MST
Databases:	DTED Level o MAX

### Failures

No Failures

### Warnings

EXCEEDED_DRIFT_TIME	Combination of critical/no-coverage segments exceeded combined drift time (11.46 minutes) from SASNE to KITTN
---------------------	---

### Notes For Flight Check

None

### Flight Plan

Name	Type	Lat/Lon	Altitude (ft)	VNAV Mode	Ground Speed (kts)	Turn Type	Leg Type
KLAS:RW08R:DER	WP	N36° 04' 25.17", W115° 07' 32.97"	2048.4	VNAV	130	FLY_OVER	TF
KLAS:RW08R-VA End	WP	N36° 04' 25.22", W115° 05' 59.19"	2682	VNAV	145	FLY_OVER	TF
SCAAR	WP	N36° 04' 24.99", W115° 03' 55.43"	3016.4	VNAV	200	FLY_BY	TF
FLAAR	WP	N36° 02' 55.02", W114° 54' 25.66"	6000	VNAV	230	FLY_BY	TF
HNIBL	WP	N35° 59' 03.67", W114° 52' 57.26"	8000	VNAV	230	FLY_BY	TF
KNGPN	WP	N35° 55' 21.62", W114° 57' 06.08"	8999.9	VNAV	230	FLY_OVER	TF
JENFR	WP	N36° 11' 46.11", W114° 52' 52.04"	6980.2	VNAV	200	FLY_BY	TF
RATPK	WP	N36° 22' 04.14", W114° 37' 21.47"	10200	VNAV	200	FLY_BY	TF
SASNE	WP	N36° 46' 52.37", W114° 41' 33.30"	12000	VNAV	240	FLY_BY	TF
KITTN	WP	N38° 19' 44.23", W114° 57' 41.27"	20000	VNAV	260	FLY_BY	TF
Climb Gradient: 500.0 ft/NM up to 2682.0 ft MSL 240.0 ft/NM up to 6500.0 ft MSL 200.0 ft/NM							

## DME DME Assessment Results for RATPK1 path KLAS:RW08R:DER\_KITTN

Flyability	
Flight Type:	SID
Selected Airport:	KLAS [IFPA]
Climb Gradient:	None assigned
Speeds:	130 at the Runway DER
	145 at the end of the VA or VI leg
	200 Ground Speed to 11000 FT
	240 Ground Speed to 18000 FT
	260 Ground Speed to 24000 FT
	340 Ground Speed above 24000 FT
Descent During a Turn:	Allowed
VNAV Mode:	Flight Plan

DME/DME	
RNP:	RNP 2
Flight Mode:	Manual
Line of Sight (DTED Level 0 Max):	Evaluated
Inertial Drift:	Enabled
Initial Drift:	0.558 NM
INS Drift Rate:	8.0 NM/Hour
Range Mode:	OSV
RNP Edges:	Evaluated
Min DME Range:	3.0 NM
DME Types:	DME, VOR-DME, VORTAC
DME Include Angles:	30 to 150
Critical DMEs:	Allowed
DoD Facilities:	Not included
Foreign Facilities:	Not included
High DMEs:	Included
Low DMEs:	Included
Terminal DMEs:	Included
Flight Check DMEs:	Not selected
Higher Altitudes:	Not Evaluated
Near Maximum Altitude:	Not Evaluated
Automatic ESVs:	Not enabled
Disabled DMEs:	None

DME/DME (Continued)										
DMEs Used										
#	Name	Lat/Lon	MAGVAR	Range	Type	Source	Critical	Status	Time	Distance
1	LAS	N36° 04' 46.93", W115° 09' 35.27"	15.0 E	130	H	IFPA	NO	Enabled	51.3 %	50.4 %
2	GOG	N35° 53' 39.30", W115° 29' 45.90"	0.0 E	130	H	IFPA	NO	Enabled	13.5 %	13.5 %
3	EED	N34° 45' 57.62", W114° 28' 26.77"	15.0 E	130	H	IFPA	NO	Enabled	16 %	15.3 %
4	ILC	N38° 15' 00.69", W114° 23' 39.22"	16.0 E	130	H	IFPA	YES	Enabled	11.4 %	12 %
5	EHK	N37° 47' 14.39", W113° 04' 05.63"	16.0 E	130	H	IFPA	NO	Enabled	6.3 %	6.7 %
6	MMM	N36° 46' 09.31", W114° 16' 38.83"	16.0 E	40	L	IFPA	NO	Enabled	27.2 %	26.7 %
7	BLD	N35° 59' 44.84", W114° 51' 48.88"	15.0 E	130	H	IFPA	YES	Enabled	53.6 %	53.1 %
8	PGS	N35° 37' 28.96", W113° 32' 40.08"	15.0 E	130	H	IFPA	NO	Enabled	27.9 %	28 %

**DME DME Assessment Results for RATPK1 path KLAS:RW08R:DER\_KITTN**

<b>Flight Check DME Selection</b>						
<b>Distance [NM]</b>	<b>Selected DMEs</b>					<b>Alternate</b>
0.0						
8.2	LAS	BLD				
10.8						
14.9	EED	GOG	LAS			
17.5	LAS	BLD	EED	GOG		
17.9	LAS	BLD	GOG			
22.1	GOG	LAS				
23.6	EED	GOG	LAS			
24.3	EED	GOG	PGS	LAS		
27.9	GOG	BLD	EED	LAS	PGS	
36.6	LAS	BLD				
39.6	LAS	BLD	GOG			
41.0	LAS	BLD				
44.2	EED	LAS	BLD	MMM		
51.3	PGS	MMM	BLD	LAS	EED	
52.1	PGS	MMM	BLD	LAS		
52.8	PGS	MMM	BLD	LAS	EED	
55.1	PGS	MMM	LAS	BLD		
63.0	PGS	MMM	BLD			
67.2	PGS	LAS	MMM	BLD		
67.6	PGS	LAS	MMM			
68.0						
70.4	LAS	MMM				
84.8	LAS	MMM	BLD			
89.4	LAS	MMM	BLD	PGS		
92.1	PGS	LAS	BLD			
99.9	LAS	MMM	BLD	PGS		
100.4	PGS	LAS	BLD			
105.5	PGS	BLD				
108.6						
137.1	BLD	ILC				
146.3	BLD	EHK	ILC			
157.3	BLD	ILC	EHK			
157.7						

# DME DME Assessment Results for RATPK1 path KLAS:RW08R:DER\_KITTN

Inertial Drift Segments			
#	Start Location	End Location	Length [NM]
1	N36° 04' 35.07", W115° 07' 13.23"	N36° 04' 27.26", W115° 10' 02.96"	2.2903
2	N36° 04' 25.36", W115° 10' 04.05"	N35° 55' 21.62", W114° 57' 06.08"	13.8641
3	N36° 41' 00.59", W114° 20' 51.51"	N36° 42' 59.45", W114° 19' 19.23"	2.3337
4	N36° 49' 46.80", W114° 14' 02.22"	N36° 56' 50.87", W114° 08' 31.02"	8.3343
5	N36° 04' 24.99", W115° 03' 55.43"	N36° 03' 24.88", W114° 57' 34.20"	5.2335
6	N36° 02' 55.02", W114° 54' 25.66"	N36° 04' 25.06", W115° 09' 41.16"	12.4271
7	N36° 04' 25.06", W115° 09' 43.75"	N36° 08' 31.30", W114° 58' 49.20"	9.7234
8	N36° 09' 10.33", W115° 18' 11.41"	N36° 11' 46.11", W114° 52' 52.04"	20.6078
9	N36° 04' 35.14", W115° 04' 57.21"	N36° 03' 24.78", W114° 57' 32.74"	6.1025
10	N36° 02' 55.02", W114° 54' 25.66"	N36° 04' 31.17", W115° 10' 13.31"	12.8695
11	N36° 04' 29.26", W115° 10' 14.41"	N36° 05' 51.77", W115° 09' 27.19"	1.5152
12	N36° 05' 53.71", W115° 09' 26.07"	N36° 08' 31.28", W114° 58' 49.38"	8.9661
13	N36° 04' 25.17", W115° 07' 30.36"	N36° 30' 59.93", W114° 38' 51.82"	35.2089
14	N36° 37' 09.02", W114° 39' 54.26"	N36° 39' 35.85", W114° 40' 19.15"	2.4701
15	N36° 03' 32.07", W115° 10' 47.12"	N36° 11' 46.00", W115° 11' 11.26"	8.2396
16	N36° 11' 46.10", W115° 09' 55.78"	N36° 11' 46.15", W115° 09' 13.32"	0.5711
17	N36° 02' 55.02", W114° 54' 25.66"	N36° 05' 54.88", W115° 09' 12.81"	12.3225
18	N36° 05' 56.83", W115° 09' 11.69"	N36° 11' 26.47", W115° 12' 12.69"	6.0105
19	N37° 17' 24.95", W114° 46' 47.20"	N37° 45' 42.30", W114° 51' 41.79"	28.5593
20	N38° 06' 11.48", W114° 55' 17.51"	N36° 22' 04.14", W114° 37' 21.47"	105.1087
21	N36° 03' 30.07", W115° 10' 35.68"	N36° 04' 34.92", W115° 10' 12.69"	1.1244

Available DMEs by Waypoints		
Waypoint Before	Waypoint After	DME List
KLAS:RW08R:DER	KLAS:RW08R-VA End	
KLAS:RW08R-VA End	SCAAR	
SCAAR	FLAAR	BLD, LAS
FLAAR	HNIBL	
HNIBL	KNGPN	EED, BLD, GOG, LAS
KNGPN	JENFR	EED, BLD, PGS, GOG, LAS
JENFR	RATPK	EED, BLD, MMM, PGS, GOG, LAS
RATPK	SASNE	EED, BLD, MMM, PGS, LAS
SASNE	KITTN	ILC, EHK, BLD, MMM, PGS, LAS

# DME DME Assessment Results for RATPK1 path KLAS:RW08R:DER\_KITTN

## User Data Files

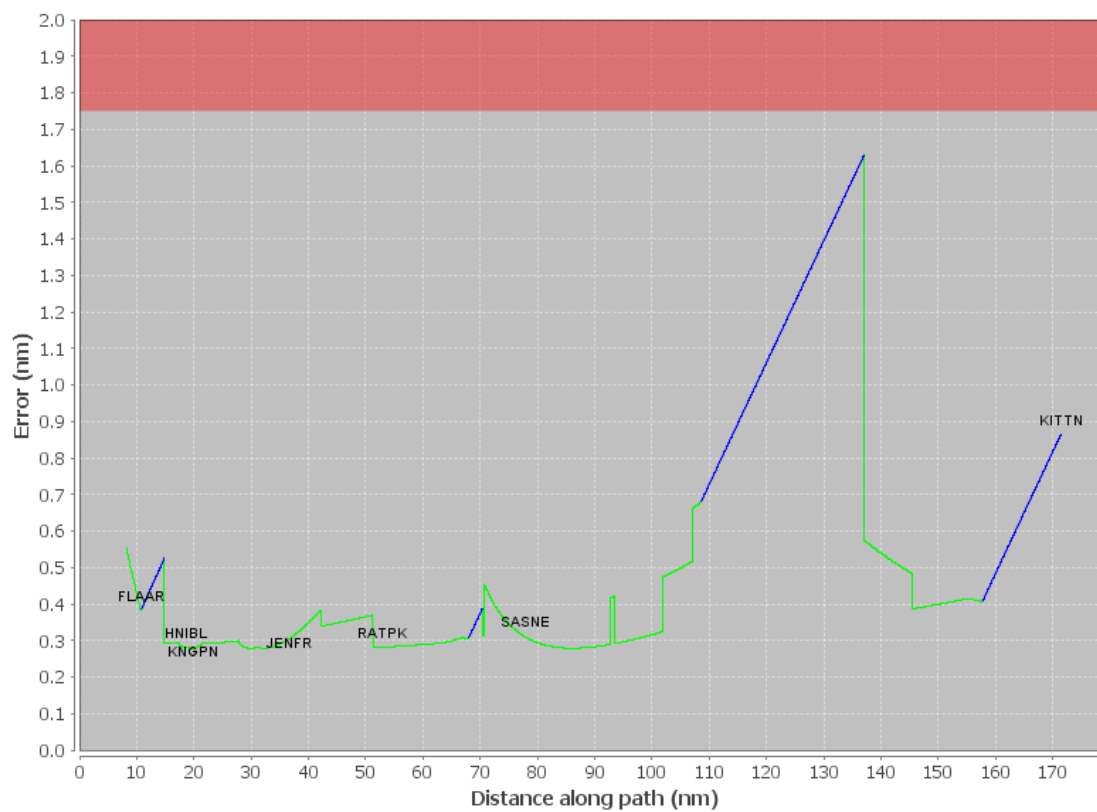
#	File Name
1	UserDMEsKLAS [IFPA] RATPK1 SID_20190904_1754 MST.udt

## User DMEs

#	Name	Lat/Lon	MAGVAR	Range	Elevation [ft]	Frequency	Replaces	Status
1	UDT ESV UTI UTI [IFPA]	N37° 01' 03.43", W113° 31' 04.44"	12.0 E	25	2848	108.6	UDT ESV UTI	
ESV:		Bearing [True]: 240.0° to 357.0° Bearing [Mag]: 228.0° to 345.0°				Arc Distance: Out to 45.0 NM Altitude: 10800.0 to 14600.0 ft		
2	UDT ESV ILC ILC [IFPA]	N38° 15' 00.69", W114° 23' 39.22"	16.0 E	130	9347.1	116.3	UDT ESV ILC	
ESV:		Bearing [True]: 146.0° to 156.0° Bearing [Mag]: 130.0° to 140.0°				Arc Distance: Out to 77.0 NM Altitude: 12900.0 to 23900.0 ft		
3	UDT ESV PGS PGS [IFPA]	N35° 37' 28.96", W113° 32' 40.08"	15.0 E	130	4760	112.0	UDT ESV PGS	
ESV:		Bearing [True]: 323.0° to 354.0° Bearing [Mag]: 308.0° to 339.0°				Arc Distance: Out to 118.0 NM Altitude: 11900.0 to 14800.0 ft		
4	UDT ESV EED EED [IFPA]	N34° 45' 57.62", W114° 28' 26.77"	15.0 E	130	689	115.2	UDT ESV EED	
ESV:		Bearing [True]: 239.0° to 5.0° Bearing [Mag]: 224.0° to 350.0°				Arc Distance: Out to 99.0 NM Altitude: 7200.0 to 13100.0 ft		
5	UDT ESV LAS LAS [IFPA]	N36° 04' 46.93", W115° 09' 35.27"	15.0 E	130	2158.8	116.9	UDT ESV LAS	
ESV:		Bearing [True]: 44.0° to 139.0° Bearing [Mag]: 29.0° to 124.0°				Arc Distance: Out to 115.0 NM Altitude: 10000.0 to 22000.0 ft		
6	UDT ESV PGS PGS [IFPA]	N35° 37' 28.96", W113° 32' 40.08"	15.0 E	130	4760	112.0	UDT ESV PGS	
ESV:		Bearing [True]: 298.0° to 46.0° Bearing [Mag]: 283.0° to 31.0°				Arc Distance: Out to 83.0 NM Altitude: 9900.0 to 20000.0 ft		
7	UDT ESV BLD BLD [IFPA]	N35° 59' 44.84", W114° 51' 48.88"	15.0 E	130	3641	116.7	UDT ESV BLD	
ESV:		Bearing [True]: 349.0° to 34.0° Bearing [Mag]: 334.0° to 19.0°				Arc Distance: Out to 127.0 NM Altitude: 12600.0 to 18900.0 ft		
8	UDT ESV ILC ILC [IFPA]	N38° 15' 00.69", W114° 23' 39.22"	16.0 E	130	9347.1	116.3	UDT ESV ILC	
ESV:		Bearing [True]: 79.0° to 171.0° Bearing [Mag]: 63.0° to 155.0°				Arc Distance: Out to 76.0 NM Altitude: 12900.0 to 24000.0 ft		
9	UDT ESV LAS LAS [IFPA]	N36° 04' 46.93", W115° 09' 35.27"	15.0 E	130	2158.8	116.9	UDT ESV LAS	
ESV:		Bearing [True]: 12.0° to 41.0° Bearing [Mag]: 357.0° to 26.0°				Arc Distance: Out to 74.0 NM Altitude: 11900.0 to 14500.0 ft		
10	UDT ESV EHK EHK [IFPA]	N37° 47' 14.39", W113° 04' 05.63"	16.0 E	130	5482.3	117.3	UDT ESV EHK	
ESV:		Bearing [True]: 275.0° to 284.0° Bearing [Mag]: 259.0° to 268.0°				Arc Distance: Out to 94.0 NM Altitude: 17700.0 to 18900.0 ft		

# DME DME Assessment Results for RATPK1 path KLAS:RW08R:DER\_KITTN

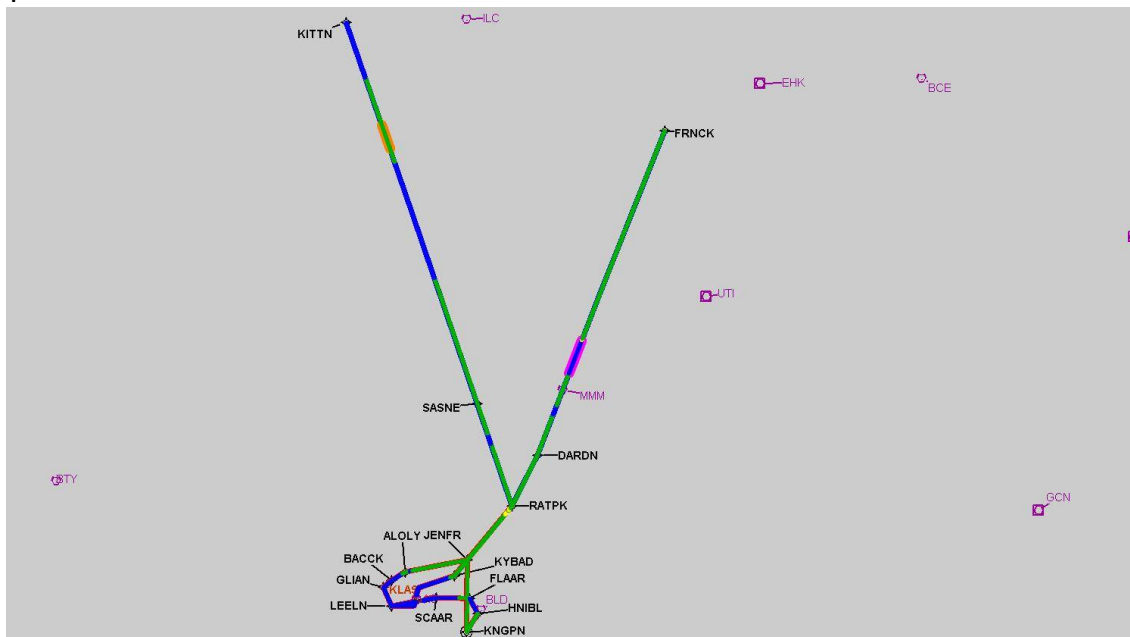
## DME Error





# DME DME Assessment Results for RATPK1 path KLAS:RW08R:DER\_KITTN

Graphic Depiction 1



## DME DME Assessment Results for RATPK1 path KLAS:RW19L:DER\_JENFR

### Results Summary

Flyability:	Completed
DME/DME:	Completed - No Critical DMEs
Name:	Bob CTR Graham
Project File:	C:\Users\Bob CTR Graham\Desktop\AREA NAV Projects and TARGETS Files\LAS METROPLEX\KLAS FINAL PACKAGES\RATPK1\20190909_KLAS RATPK.tgs
Output File:	C:\Users\Bob CTR Graham\Desktop\AREA NAV Projects and TARGETS Files\LAS METROPLEX\KLAS FINAL PACKAGES\RATPK\KLAS [IFPA] RATPK1 20190910_1551 MST\KLAS-RW19L-DER_JENFR\KLAS RATPK1 SID KLAS RW19L JENFR 20190910_1551 MST.pdf
Procedure Name:	RATPK1
Software: DmeDmePlugin:	5.6.0
Date/Time:	09/10/2019 15:51 MST
Databases:	DTED Level o MAX

### Failures

No Failures

### Warnings

No Warnings

### Notes For Flight Check

None

### Flight Plan

Name	Type	Lat/Lon	Altitude (ft)	VNAV Mode	Ground Speed (kts)	Turn Type	Leg Type
KLAS:RW19L:DER	WP	N36° 04' 27.26", W115° 10' 02.96"	2175.1	VNAV	130	FLY_BY	TF
KLAS:RW19L-VI End	WP	N36° 03' 30.07", W115° 10' 35.68"	2385	VNAV	145	FLY_BY	TF
LEELN	WP	N36° 04' 35.00", W115° 16' 54.00"	3430	VNAV	200	FLY_BY	TF
GLIAN	WP	N36° 09' 10.33", W115° 18' 11.41"	5000	VNAV	230	FLY_BY	TF
BACCK	WP	N36° 10' 25.03", W115° 15' 25.69"	6000	VNAV	230	FLY_BY	TF
ALOLY	WP	N36° 11' 46.00", W115° 11' 11.26"	7000	VNAV	230	FLY_BY	TF
JENFR	WP	N36° 11' 46.11", W114° 52' 52.04"	6980.2	VNAV	200	FLY_BY	TF
Climb Gradient: 200.0 ft/NM							

### Flyability

Flight Type:	SID
Selected Airport:	KLAS [IFPA]
Climb Gradient:	None assigned
Speeds:	130 at the Runway DER
	145 at the end of the VA or VI leg
	200 Ground Speed to 11000 FT
	240 Ground Speed to 18000 FT
	260 Ground Speed to 24000 FT
	340 Ground Speed above 24000 FT
Descent During a Turn:	Allowed
VNAV Mode:	Flight Plan

## DME DME Assessment Results for RATPK1 path KLAS:RW19L:DER\_JENFR

DME/DME	
RNP:	RNP 2
Flight Mode:	Manual
Line of Sight (DTED Level 0 Max):	Evaluated
Inertial Drift:	Enabled
Initial Drift:	0.558 NM
INS Drift Rate:	8.0 NM/Hour
Range Mode:	OSV
RNP Edges:	Evaluated
Min DME Range:	3.0 NM
DME Types:	DME, VOR-DME, VORTAC
DME Include Angles:	30 to 150
Critical DMEs:	Allowed
DoD Facilities:	Not included
Foreign Facilities:	Not included
High DMEs:	Included
Low DMEs:	Included
Terminal DMEs:	Included
Flight Check DMEs:	Not selected
Higher Altitudes:	Not Evaluated
Near Maximum Altitude:	Not Evaluated
Automatic ESVs:	Not enabled
Disabled DMEs:	None

DME/DME (Continued)										
DMEs Used										
#	Name	Lat/Lon	MAGVAR	Range	Type	Source	Critical	Status	Time	Distance
1	LAS	N36° 04' 46.93", W115° 09' 35.27"	15.0 E	130	H	IFPA	NO	Enabled	42.1 %	47 %
2	GOG	N35° 53' 39.30", W115° 29' 45.90"	0.0 E	130	H	IFPA	NO	Enabled		
3	BLD	N35° 59' 44.84", W114° 51' 48.88"	15.0 E	130	H	IFPA	NO	Enabled	42.1 %	47 %

Flight Check DME Selection						
Distance [NM]	Selected DMEs					Alternate
0.0						
16.3	LAS	BLD				
17.2	GOG	BLD	LAS			
17.3	LAS	BLD				
18.2						
18.8	LAS	BLD				

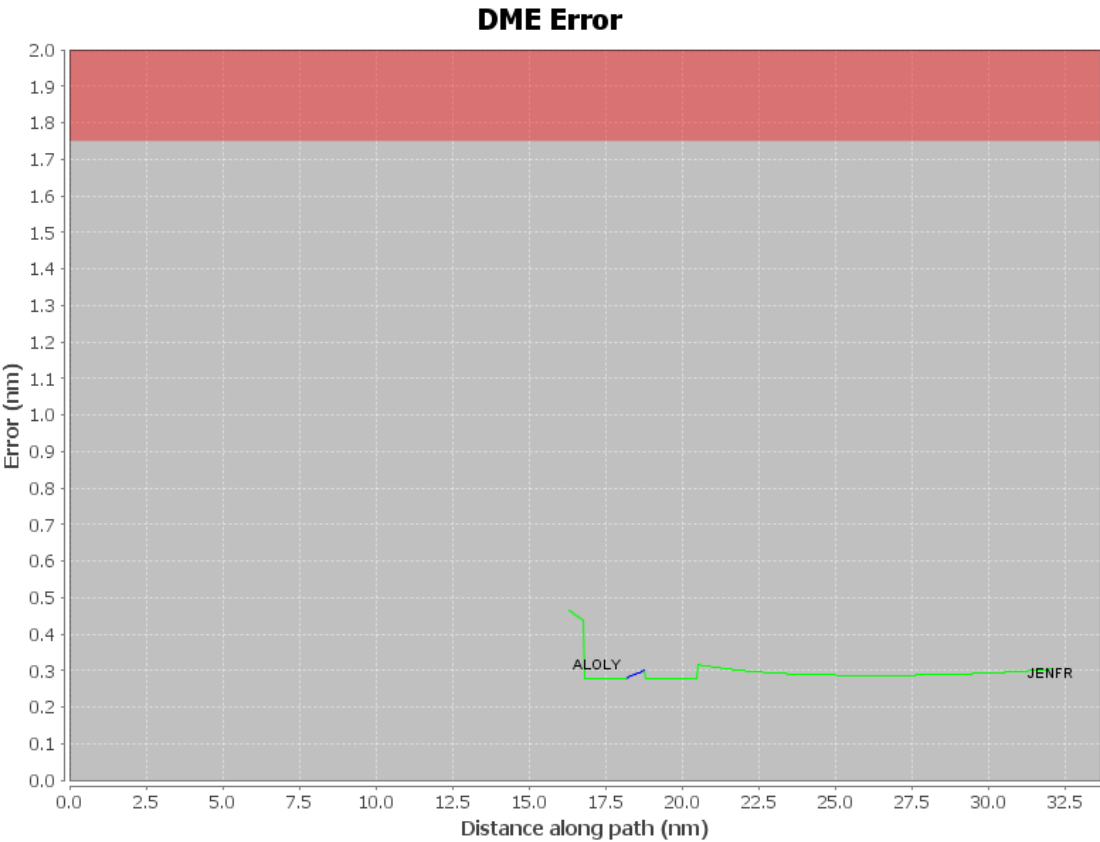
# DME DME Assessment Results for RATPK1 path KLAS:RW19L:DER\_JENFR

Inertial Drift Segments			
#	Start Location	End Location	Length [NM]
1	N36° 04' 35.07", W115° 07' 13.23"	N36° 04' 27.26", W115° 10' 02.96"	2.2903
2	N36° 04' 25.36", W115° 10' 04.05"	N35° 55' 21.62", W114° 57' 06.08"	13.8641
3	N36° 41' 00.59", W114° 20' 51.51"	N36° 42' 59.45", W114° 19' 19.23"	2.3337
4	N36° 49' 46.80", W114° 14' 02.22"	N36° 56' 50.87", W114° 08' 31.02"	8.3343
5	N36° 04' 24.99", W115° 03' 55.43"	N36° 03' 24.88", W114° 57' 34.20"	5.2335
6	N36° 02' 55.02", W114° 54' 25.66"	N36° 04' 25.06", W115° 09' 41.16"	12.4271
7	N36° 04' 25.06", W115° 09' 43.75"	N36° 08' 31.30", W114° 58' 49.20"	9.7234
8	N36° 09' 10.33", W115° 18' 11.41"	N36° 11' 46.11", W114° 52' 52.04"	20.6078
9	N36° 04' 35.14", W115° 04' 57.21"	N36° 03' 24.78", W114° 57' 32.74"	6.1025
10	N36° 02' 55.02", W114° 54' 25.66"	N36° 04' 31.17", W115° 10' 13.31"	12.8695
11	N36° 04' 29.26", W115° 10' 14.41"	N36° 05' 51.77", W115° 09' 27.19"	1.5152
12	N36° 05' 53.71", W115° 09' 26.07"	N36° 08' 31.28", W114° 58' 49.38"	8.9661
13	N36° 04' 25.17", W115° 07' 30.36"	N36° 30' 59.93", W114° 38' 51.82"	35.2089
14	N36° 37' 09.02", W114° 39' 54.26"	N36° 39' 35.85", W114° 40' 19.15"	2.4701
15	N36° 03' 32.07", W115° 10' 47.12"	N36° 11' 46.00", W115° 11' 11.26"	8.2396
16	N36° 11' 46.10", W115° 09' 55.78"	N36° 11' 46.15", W115° 09' 13.32"	0.5711
17	N36° 02' 55.02", W114° 54' 25.66"	N36° 05' 54.88", W115° 09' 12.81"	12.3225
18	N36° 05' 56.83", W115° 09' 11.69"	N36° 11' 26.47", W115° 12' 12.69"	6.0105
19	N37° 17' 24.95", W114° 46' 47.20"	N37° 45' 42.30", W114° 51' 41.79"	28.5593
20	N38° 06' 11.48", W114° 55' 17.51"	N36° 22' 04.14", W114° 37' 21.47"	105.1087
21	N36° 03' 30.07", W115° 10' 35.68"	N36° 04' 34.92", W115° 10' 12.69"	1.1244

Available DMEs by Waypoints		
Waypoint Before	Waypoint After	DME List
KLAS:RW19L:DER	KLAS:RW19L-VI End	
KLAS:RW19L-VI End	LEELN	
LEELN	GLIAN	
GLIAN	BACCK	
BACCK	ALOLY	BLD, GOG, LAS
ALOLY	JENFR	BLD, LAS

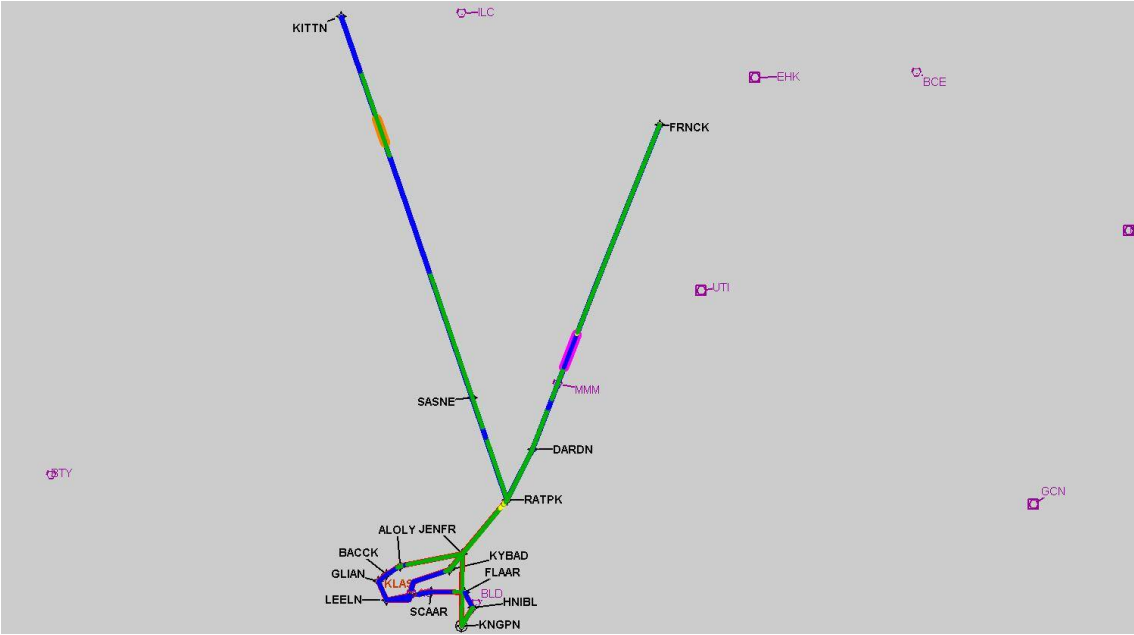
# DME DME Assessment Results for RATPK1 path KLAS:RW19L:DER\_JENFR

User Data Files								
#	File Name							
1	UserDMEsKLAS [IFPA] RATPK1 SID_20190904_1754 MST.udt							
User DMEs								
#	Name	Lat/Lon	MAGVAR	Range	Elevation [ft]	Frequency	Replaces	Status
1	UDT ESV UTI UTI [IFPA]	N37° 01' 03.43", W113° 31' 04.44"	12.0 E	25	2848	108.6	UDT ESV UTI	
ESV:		Bearing [True]: 240.0° to 357.0° Bearing [Mag]: 228.0° to 345.0°				Arc Distance: Out to 45.0 NM Altitude: 10800.0 to 14600.0 ft		
2	UDT ESV ILC ILC [IFPA]	N38° 15' 00.69", W114° 23' 39.22"	16.0 E	130	9347.1	116.3	UDT ESV ILC	
ESV:		Bearing [True]: 146.0° to 156.0° Bearing [Mag]: 130.0° to 140.0°				Arc Distance: Out to 77.0 NM Altitude: 12900.0 to 23900.0 ft		
3	UDT ESV PGS PGS [IFPA]	N35° 37' 28.96", W113° 32' 40.08"	15.0 E	130	4760	112.0	UDT ESV PGS	
ESV:		Bearing [True]: 323.0° to 354.0° Bearing [Mag]: 308.0° to 339.0°				Arc Distance: Out to 118.0 NM Altitude: 11900.0 to 14800.0 ft		
4	UDT ESV EED EED [IFPA]	N34° 45' 57.62", W114° 28' 26.77"	15.0 E	130	689	115.2	UDT ESV EED	
ESV:		Bearing [True]: 239.0° to 5.0° Bearing [Mag]: 224.0° to 350.0°				Arc Distance: Out to 99.0 NM Altitude: 7200.0 to 13100.0 ft		
5	UDT ESV LAS LAS [IFPA]	N36° 04' 46.93", W115° 09' 35.27"	15.0 E	130	2158.8	116.9	UDT ESV LAS	
ESV:		Bearing [True]: 44.0° to 139.0° Bearing [Mag]: 29.0° to 124.0°				Arc Distance: Out to 115.0 NM Altitude: 10000.0 to 22000.0 ft		
6	UDT ESV PGS PGS [IFPA]	N35° 37' 28.96", W113° 32' 40.08"	15.0 E	130	4760	112.0	UDT ESV PGS	
ESV:		Bearing [True]: 298.0° to 46.0° Bearing [Mag]: 283.0° to 31.0°				Arc Distance: Out to 83.0 NM Altitude: 9900.0 to 20000.0 ft		
7	UDT ESV BLD BLD [IFPA]	N35° 59' 44.84", W114° 51' 48.88"	15.0 E	130	3641	116.7	UDT ESV BLD	
ESV:		Bearing [True]: 349.0° to 34.0° Bearing [Mag]: 334.0° to 19.0°				Arc Distance: Out to 127.0 NM Altitude: 12600.0 to 18900.0 ft		
8	UDT ESV ILC ILC [IFPA]	N38° 15' 00.69", W114° 23' 39.22"	16.0 E	130	9347.1	116.3	UDT ESV ILC	
ESV:		Bearing [True]: 79.0° to 171.0° Bearing [Mag]: 63.0° to 155.0°				Arc Distance: Out to 76.0 NM Altitude: 12900.0 to 24000.0 ft		
9	UDT ESV LAS LAS [IFPA]	N36° 04' 46.93", W115° 09' 35.27"	15.0 E	130	2158.8	116.9	UDT ESV LAS	
ESV:		Bearing [True]: 12.0° to 41.0° Bearing [Mag]: 357.0° to 26.0°				Arc Distance: Out to 74.0 NM Altitude: 11900.0 to 14500.0 ft		
10	UDT ESV EHK EHK [IFPA]	N37° 47' 14.39", W113° 04' 05.63"	16.0 E	130	5482.3	117.3	UDT ESV EHK	
ESV:		Bearing [True]: 275.0° to 284.0° Bearing [Mag]: 259.0° to 268.0°				Arc Distance: Out to 94.0 NM Altitude: 17700.0 to 18900.0 ft		



DME DME Assessment Results for RATPK1 path KLAS:RW19L:DER\_JENFR

Graphic Depiction 1



## DME DME Assessment Results for RATPK1 path KLAS:RW19R:DER\_LEELN

### Results Summary

Flyability:	Completed
DME/DME:	Completed - No Critical DMEs
Name:	Bob CTR Graham
Project File:	C:\Users\Bob CTR Graham\Desktop\AREA NAV Projects and TARGETS Files\LAS METROPLEX\KLAS FINAL PACKAGES\RATPK\20190909_KLAS RATPK.tgs
Output File:	C:\Users\Bob CTR Graham\Desktop\AREA NAV Projects and TARGETS Files\LAS METROPLEX\KLAS FINAL PACKAGES\RATPK\KLAS [IFPA] RATPK1 20190910_1551 MST\KLAS-RW19R-DER_LEELN\KLAS RATPK1 SID KLAS RW19R LEELN 20190910_1551 MST.pdf
Procedure Name:	RATPK1
Software: DmeDmePlugin:	5.6.0
Date/Time:	09/10/2019 15:51 MST
Databases:	DTED Level o MAX

### Failures

No Failures

### Warnings

No Warnings

### Notes For Flight Check

None

### Flight Plan

Name	Type	Lat/Lon	Altitude (ft)	VNAV Mode	Ground Speed (kts)	Turn Type	Leg Type
KLAS:RW19R:DER	WP	N36° 04' 31.17", W115° 10' 13.31"	2181.3	VNAV	130	FLY_BY	TF
KLAS:RW19R-VI End	WP	N36° 03' 32.07", W115° 10' 47.12"	2441.6	VNAV	145	FLY_BY	TF
LEELN	WP	N36° 04' 35.00", W115° 16' 54.00"	3430	VNAV	200	FLY_BY	TF
Climb Gradient: 240.0 ft/NM up to 4300.0 ft MSL 200.0 ft/NM							

### Flyability

Flight Type:	SID
Selected Airport:	KLAS [IFPA]
Climb Gradient:	None assigned
Speeds:	130 at the Runway DER
	145 at the end of the VA or VI leg
	200 Ground Speed to 11000 FT
	240 Ground Speed to 18000 FT
	260 Ground Speed to 24000 FT
	340 Ground Speed above 24000 FT
Descent During a Turn:	Allowed
VNAV Mode:	Flight Plan



## DME DME Assessment Results for RATPK1 path KLAS:RW19R:DER\_LEELN

DME/DME	
RNP:	RNP 2
Flight Mode:	Manual
Line of Sight (DTED Level 0 Max):	Evaluated
Inertial Drift:	Enabled
Initial Drift:	0.558 NM
INS Drift Rate:	8.0 NM/Hour
Range Mode:	OSV
RNP Edges:	Evaluated
Min DME Range:	3.0 NM
DME Types:	DME, VOR-DME, VORTAC
DME Include Angles:	30 to 150
Critical DMEs:	Allowed
DoD Facilities:	Not included
Foreign Facilities:	Not included
High DMEs:	Included
Low DMEs:	Included
Terminal DMEs:	Included
Flight Check DMEs:	Not selected
Higher Altitudes:	Not Evaluated
Near Maximum Altitude:	Not Evaluated
Automatic ESVs:	Not enabled
Disabled DMEs:	None

DME/DME (Continued)										
DMEs Used										
#	Name	Lat/Lon	MAGVAR	Range	Type	Source	Critical	Status	Time	Distance

Flight Check DME Selection						
Distance [NM]	Selected DMEs					Alternate
0.0						

Inertial Drift Segments			
#	Start Location	End Location	Length [NM]
1	N36° 04' 35.07", W115° 07' 13.23"	N36° 04' 27.26", W115° 10' 02.96"	2.2903
2	N36° 04' 25.36", W115° 10' 04.05"	N35° 55' 21.62", W114° 57' 06.08"	13.8641
3	N36° 41' 00.59", W114° 20' 51.51"	N36° 42' 59.45", W114° 19' 19.23"	2.3337
4	N36° 49' 46.80", W114° 14' 02.22"	N36° 56' 50.87", W114° 08' 31.02"	8.3343
5	N36° 04' 24.99", W115° 03' 55.43"	N36° 03' 24.88", W114° 57' 34.20"	5.2335
6	N36° 02' 55.02", W114° 54' 25.66"	N36° 04' 25.06", W115° 09' 41.16"	12.4271
7	N36° 04' 25.06", W115° 09' 43.75"	N36° 08' 31.30", W114° 58' 49.20"	9.7234
8	N36° 09' 10.33", W115° 18' 11.41"	N36° 11' 46.11", W114° 52' 52.04"	20.6078
9	N36° 04' 35.14", W115° 04' 57.21"	N36° 03' 24.78", W114° 57' 32.74"	6.1025
10	N36° 02' 55.02", W114° 54' 25.66"	N36° 04' 31.17", W115° 10' 13.31"	12.8695
11	N36° 04' 29.26", W115° 10' 14.41"	N36° 05' 51.77", W115° 09' 27.19"	1.5152
12	N36° 05' 53.71", W115° 09' 26.07"	N36° 08' 31.28", W114° 58' 49.38"	8.9661
13	N36° 04' 25.17", W115° 07' 30.36"	N36° 30' 59.93", W114° 38' 51.82"	35.2089
14	N36° 37' 09.02", W114° 39' 54.26"	N36° 39' 35.85", W114° 40' 19.15"	2.4701
15	N36° 03' 32.07", W115° 10' 47.12"	N36° 11' 46.00", W115° 11' 11.26"	8.2396
16	N36° 11' 46.10", W115° 09' 55.78"	N36° 11' 46.15", W115° 09' 13.32"	0.5711
17	N36° 02' 55.02", W114° 54' 25.66"	N36° 05' 54.88", W115° 09' 12.81"	12.3225
18	N36° 05' 56.83", W115° 09' 11.69"	N36° 11' 26.47", W115° 12' 12.69"	6.0105
19	N37° 17' 24.95", W114° 46' 47.20"	N37° 45' 42.30", W114° 51' 41.79"	28.5593
20	N38° 06' 11.48", W114° 55' 17.51"	N36° 22' 04.14", W114° 37' 21.47"	105.1087
21	N36° 03' 30.07", W115° 10' 35.68"	N36° 04' 34.92", W115° 10' 12.69"	1.1244

# DME DME Assessment Results for RATPK1 path KLAS:RW19R:DER\_LEELN

## Available DMEs by Waypoints

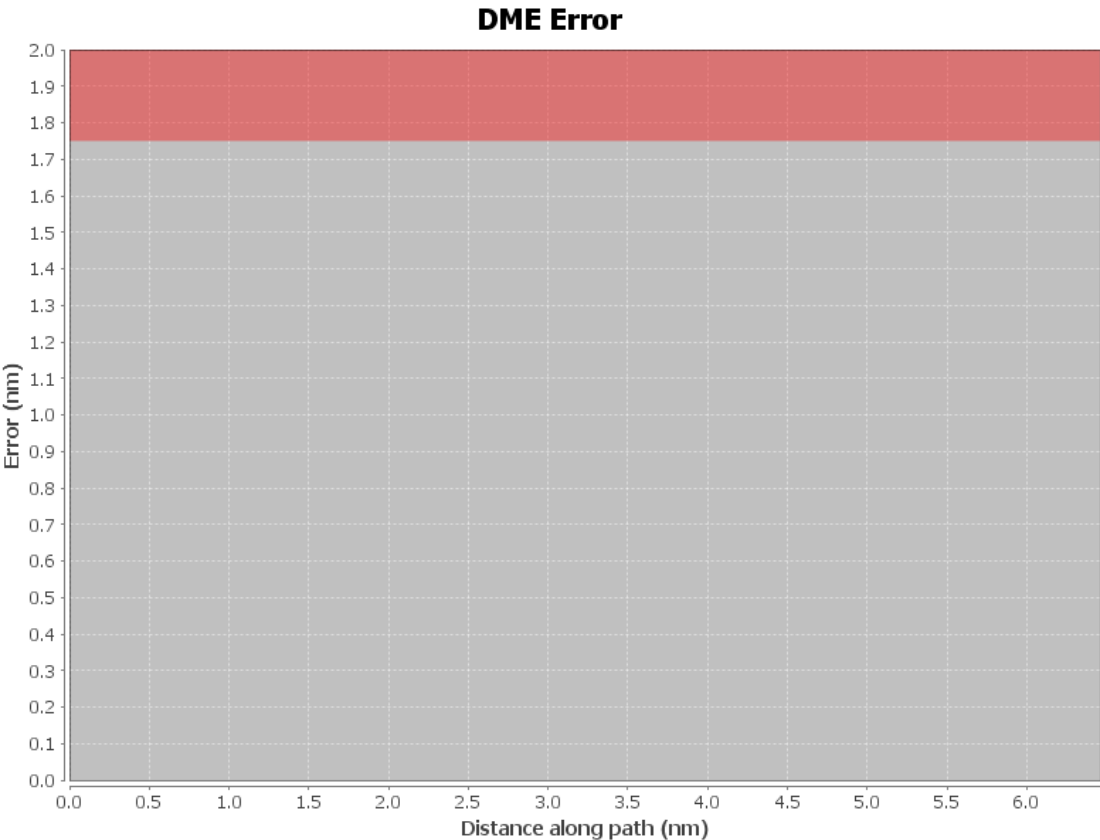
Waypoint Before	Waypoint After	DME List
KLAS:RW19R:DER	KLAS:RW19R-VI End	
KLAS:RW19R-VI End	LEELN	

## User Data Files

#	File Name
1	UserDMEsKLAS [IFPA] RATPK1_SID_20190904_1754 MST.udt

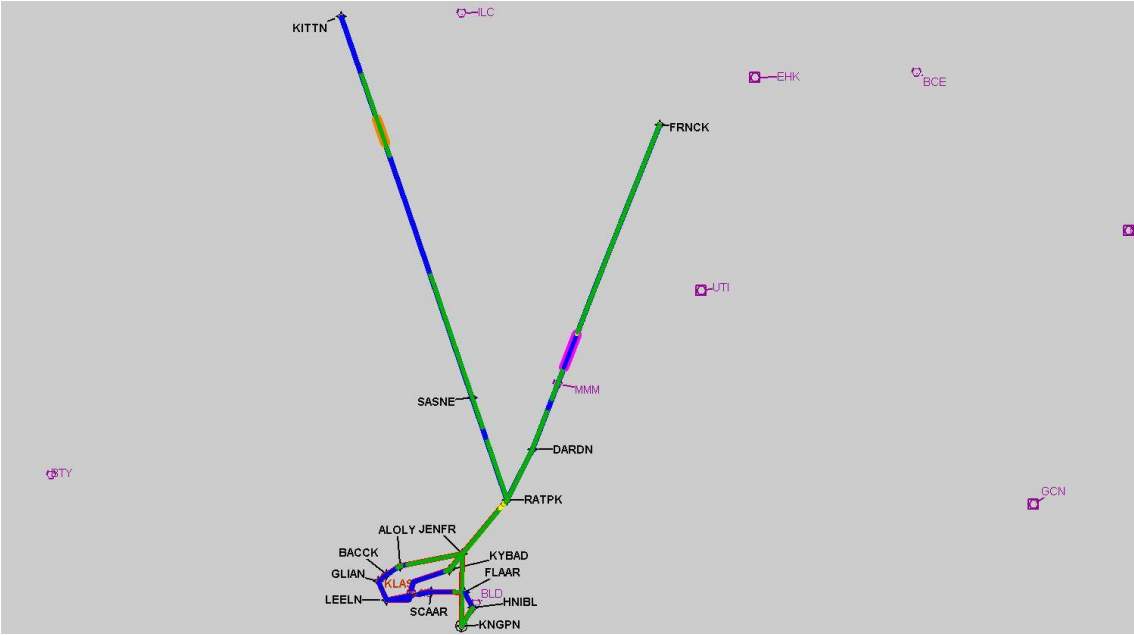
## User DMEs

#	Name	Lat/Lon	MAGVAR	Range	Elevation [ft]	Frequency	Replaces	Status
1	UDT ESV UTI UTI [IFPA]	N37° 01' 03.43", W113° 31' 04.44"	12.0 E	25	2848	108.6	UDT ESV UTI	
	ESV:	Bearing [True]: 240.0° to 357.0° Bearing [Mag]: 228.0° to 345.0°				Arc Distance: Out to 45.0 NM Altitude: 10800.0 to 14600.0 ft		
2	UDT ESV ILC ILC [IFPA]	N38° 15' 00.69", W114° 23' 39.22"	16.0 E	130	9347.1	116.3	UDT ESV ILC	
	ESV:	Bearing [True]: 146.0° to 156.0° Bearing [Mag]: 130.0° to 140.0°				Arc Distance: Out to 77.0 NM Altitude: 12900.0 to 23900.0 ft		
3	UDT ESV PGS PGS [IFPA]	N35° 37' 28.96", W113° 32' 40.08"	15.0 E	130	4760	112.0	UDT ESV PGS	
	ESV:	Bearing [True]: 323.0° to 354.0° Bearing [Mag]: 308.0° to 339.0°				Arc Distance: Out to 118.0 NM Altitude: 11900.0 to 14800.0 ft		
4	UDT ESV EED EED [IFPA]	N34° 45' 57.62", W114° 28' 26.77"	15.0 E	130	689	115.2	UDT ESV EED	
	ESV:	Bearing [True]: 239.0° to 5.0° Bearing [Mag]: 224.0° to 350.0°				Arc Distance: Out to 99.0 NM Altitude: 7200.0 to 13100.0 ft		
5	UDT ESV LAS LAS [IFPA]	N36° 04' 46.93", W115° 09' 35.27"	15.0 E	130	2158.8	116.9	UDT ESV LAS	
	ESV:	Bearing [True]: 44.0° to 139.0° Bearing [Mag]: 29.0° to 124.0°				Arc Distance: Out to 115.0 NM Altitude: 10000.0 to 22000.0 ft		
6	UDT ESV PGS PGS [IFPA]	N35° 37' 28.96", W113° 32' 40.08"	15.0 E	130	4760	112.0	UDT ESV PGS	
	ESV:	Bearing [True]: 298.0° to 46.0° Bearing [Mag]: 283.0° to 31.0°				Arc Distance: Out to 83.0 NM Altitude: 9900.0 to 20000.0 ft		
7	UDT ESV BLD BLD [IFPA]	N35° 59' 44.84", W114° 51' 48.88"	15.0 E	130	3641	116.7	UDT ESV BLD	
	ESV:	Bearing [True]: 349.0° to 34.0° Bearing [Mag]: 334.0° to 19.0°				Arc Distance: Out to 127.0 NM Altitude: 12600.0 to 18900.0 ft		
8	UDT ESV ILC ILC [IFPA]	N38° 15' 00.69", W114° 23' 39.22"	16.0 E	130	9347.1	116.3	UDT ESV ILC	
	ESV:	Bearing [True]: 79.0° to 171.0° Bearing [Mag]: 63.0° to 155.0°				Arc Distance: Out to 76.0 NM Altitude: 12900.0 to 24000.0 ft		
9	UDT ESV LAS LAS [IFPA]	N36° 04' 46.93", W115° 09' 35.27"	15.0 E	130	2158.8	116.9	UDT ESV LAS	
	ESV:	Bearing [True]: 12.0° to 41.0° Bearing [Mag]: 357.0° to 26.0°				Arc Distance: Out to 74.0 NM Altitude: 11900.0 to 14500.0 ft		
10	UDT ESV EHK EHK [IFPA]	N37° 47' 14.39", W113° 04' 05.63"	16.0 E	130	5482.3	117.3	UDT ESV EHK	
	ESV:	Bearing [True]: 275.0° to 284.0° Bearing [Mag]: 259.0° to 268.0°				Arc Distance: Out to 94.0 NM Altitude: 17700.0 to 18900.0 ft		



DME DME Assessment Results for RATPK1 path KLAS:RW19R:DER\_LEELN

Graphic Depiction 1



## DME DME Assessment Results for RATPK1 path KLAS:RW26L:DER\_LEELN

### Results Summary

Flyability:	Completed
DME/DME:	Completed - No Critical DMEs
Name:	Bob CTR Graham
Project File:	C:\Users\Bob CTR Graham\Desktop\AREA NAV Projects and TARGETS Files\LAS METROPLEX\KLAS FINAL PACKAGES\RATPK\20190909_KLAS RATPK.tgs
Output File:	C:\Users\Bob CTR Graham\Desktop\AREA NAV Projects and TARGETS Files\LAS METROPLEX\KLAS FINAL PACKAGES\RATPK\KLAS [IFPA] RATPK1 20190910_1551 MST\KLAS-RW26L-DER_LEELN\KLAS RATPK1 SID KLAS RW26L LEELN 20190910_1551 MST.pdf
Procedure Name:	RATPK1
Software: DmeDmePlugin:	5.6.0
Date/Time:	09/10/2019 15:51 MST
Databases:	DTED Level o MAX

### Failures

No Failures

### Warnings

No Warnings

### Notes For Flight Check

None

### Flight Plan

Name	Type	Lat/Lon	Altitude (ft)	VNAV Mode	Ground Speed (kts)	Turn Type	Leg Type
KLAS:RW26L:DER	WP	N36° 04' 25.06", W115° 09' 41.16"	2156.9	VNAV	130	FLY_OVER	TF
KLAS:RW26L-VA End	WP	N36° 04' 24.98", W115° 10' 58.88"	2682	VNAV	145	FLY_OVER	TF
LEELN	WP	N36° 04' 35.00", W115° 16' 54.00"	3430	VNAV	200	FLY_BY	TF
Climb Gradient: 500.0 ft/NM up to 2682.0 ft MSL 200.0 ft/NM							

### Flyability

Flight Type:	SID
Selected Airport:	KLAS [IFPA]
Climb Gradient:	None assigned
Speeds:	130 at the Runway DER
	145 at the end of the VA or VI leg
	200 Ground Speed to 11000 FT
	240 Ground Speed to 18000 FT
	260 Ground Speed to 24000 FT
	340 Ground Speed above 24000 FT
Descent During a Turn:	Allowed
VNAV Mode:	Flight Plan

## DME DME Assessment Results for RATPK1 path KLAS:RW26L:DER\_LEELN

DME/DME	
RNP:	RNP 2
Flight Mode:	Manual
Line of Sight (DTED Level 0 Max):	Evaluated
Inertial Drift:	Enabled
Initial Drift:	0.558 NM
INS Drift Rate:	8.0 NM/Hour
Range Mode:	OSV
RNP Edges:	Evaluated
Min DME Range:	3.0 NM
DME Types:	DME, VOR-DME, VORTAC
DME Include Angles:	30 to 150
Critical DMEs:	Allowed
DoD Facilities:	Not included
Foreign Facilities:	Not included
High DMEs:	Included
Low DMEs:	Included
Terminal DMEs:	Included
Flight Check DMEs:	Not selected
Higher Altitudes:	Not Evaluated
Near Maximum Altitude:	Not Evaluated
Automatic ESVs:	Not enabled
Disabled DMEs:	None

DME/DME (Continued)										
DMEs Used										
#	Name	Lat/Lon	MAGVAR	Range	Type	Source	Critical	Status	Time	Distance

Flight Check DME Selection						
Distance [NM]	Selected DMEs					Alternate
0.0						

Inertial Drift Segments			
#	Start Location	End Location	Length [NM]
1	N36° 04' 35.07", W115° 07' 13.23"	N36° 04' 27.26", W115° 10' 02.96"	2.2903
2	N36° 04' 25.36", W115° 10' 04.05"	N35° 55' 21.62", W114° 57' 06.08"	13.8641
3	N36° 41' 00.59", W114° 20' 51.51"	N36° 42' 59.45", W114° 19' 19.23"	2.3337
4	N36° 49' 46.80", W114° 14' 02.22"	N36° 56' 50.87", W114° 08' 31.02"	8.3343
5	N36° 04' 24.99", W115° 03' 55.43"	N36° 03' 24.88", W114° 57' 34.20"	5.2335
6	N36° 02' 55.02", W114° 54' 25.66"	N36° 04' 25.06", W115° 09' 41.16"	12.4271
7	N36° 04' 25.06", W115° 09' 43.75"	N36° 08' 31.30", W114° 58' 49.20"	9.7234
8	N36° 09' 10.33", W115° 18' 11.41"	N36° 11' 46.11", W114° 52' 52.04"	20.6078
9	N36° 04' 35.14", W115° 04' 57.21"	N36° 03' 24.78", W114° 57' 32.74"	6.1025
10	N36° 02' 55.02", W114° 54' 25.66"	N36° 04' 31.17", W115° 10' 13.31"	12.8695
11	N36° 04' 29.26", W115° 10' 14.41"	N36° 05' 51.77", W115° 09' 27.19"	1.5152
12	N36° 05' 53.71", W115° 09' 26.07"	N36° 08' 31.28", W114° 58' 49.38"	8.9661
13	N36° 04' 25.17", W115° 07' 30.36"	N36° 30' 59.93", W114° 38' 51.82"	35.2089
14	N36° 37' 09.02", W114° 39' 54.26"	N36° 39' 35.85", W114° 40' 19.15"	2.4701
15	N36° 03' 32.07", W115° 10' 47.12"	N36° 11' 46.00", W115° 11' 11.26"	8.2396
16	N36° 11' 46.10", W115° 09' 55.78"	N36° 11' 46.15", W115° 09' 13.32"	0.5711
17	N36° 02' 55.02", W114° 54' 25.66"	N36° 05' 54.88", W115° 09' 12.81"	12.3225
18	N36° 05' 56.83", W115° 09' 11.69"	N36° 11' 26.47", W115° 12' 12.69"	6.0105
19	N37° 17' 24.95", W114° 46' 47.20"	N37° 45' 42.30", W114° 51' 41.79"	28.5593
20	N38° 06' 11.48", W114° 55' 17.51"	N36° 22' 04.14", W114° 37' 21.47"	105.1087
21	N36° 03' 30.07", W115° 10' 35.68"	N36° 04' 34.92", W115° 10' 12.69"	1.1244

# DME DME Assessment Results for RATPK1 path KLAS:RW26L:DER\_LEELN

## Available DMEs by Waypoints

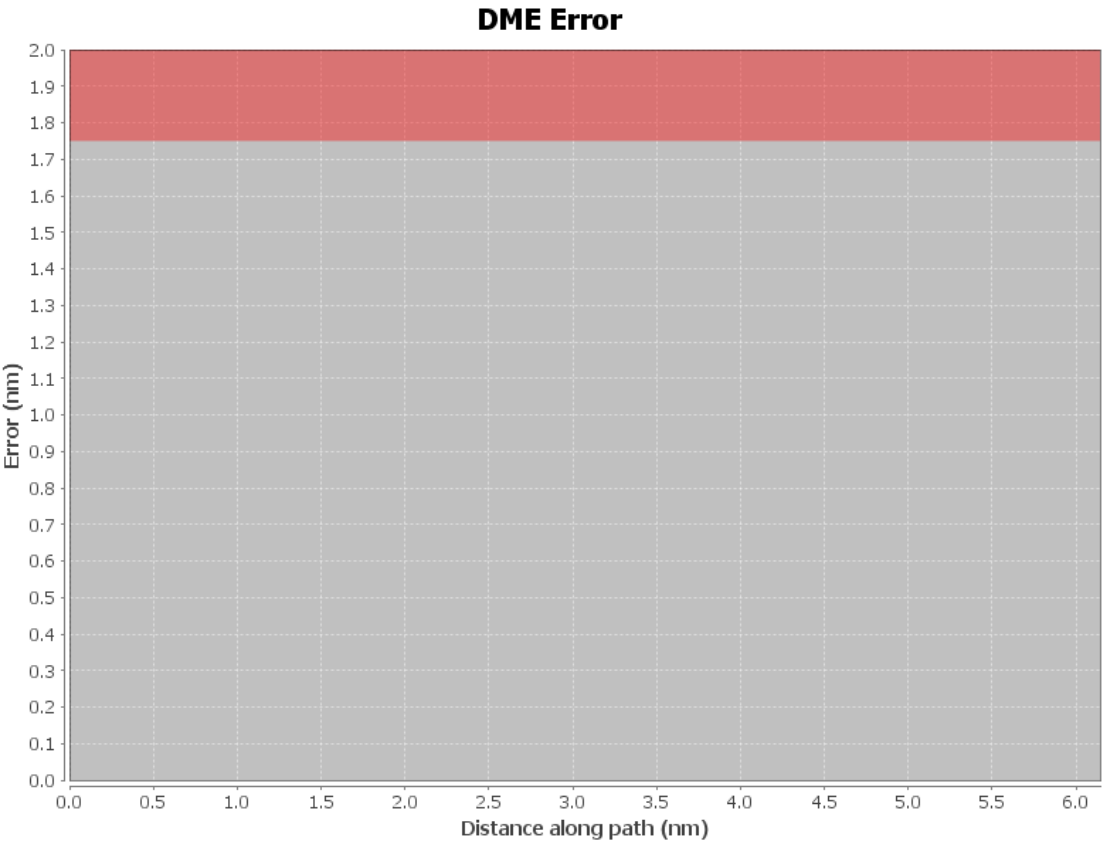
Waypoint Before	Waypoint After	DME List
KLAS:RW26L:DER	KLAS:RW26L-VA End	
KLAS:RW26L-VA End	LEELN	

## User Data Files

#	File Name
1	UserDMEsKLAS [IFPA] RATPK1_SID_20190904_1754 MST.udt

## User DMEs

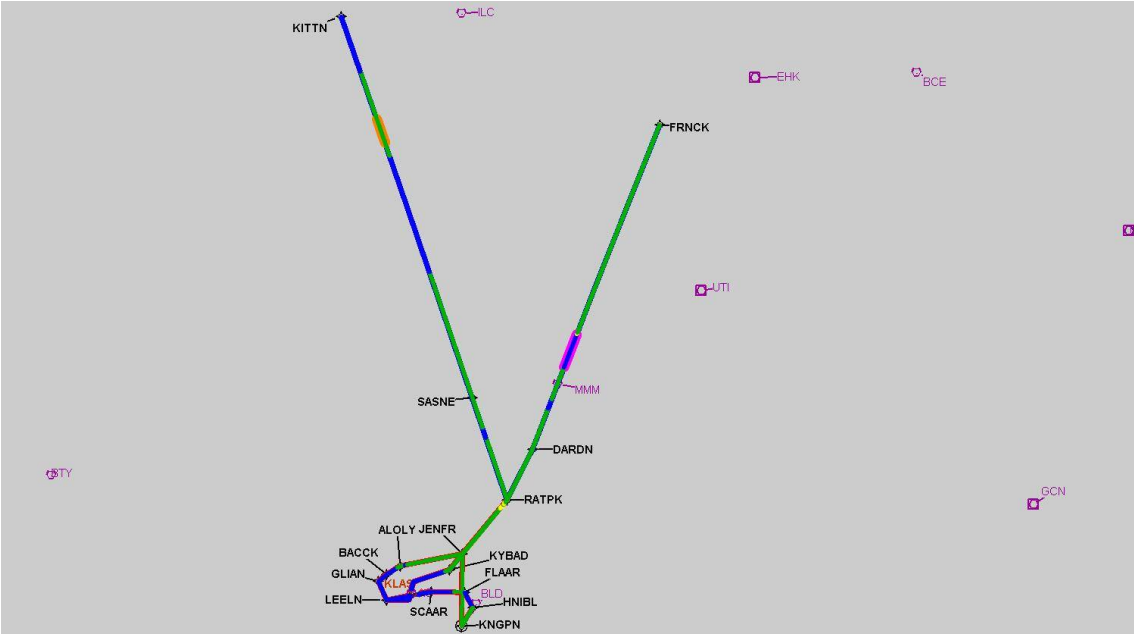
#	Name	Lat/Lon	MAGVAR	Range	Elevation [ft]	Frequency	Replaces	Status
1	UDT ESV UTI UTI [IFPA]	N37° 01' 03.43", W113° 31' 04.44"	12.0 E	25	2848	108.6	UDT ESV UTI	
ESV:		Bearing [True]: 240.0° to 357.0° Bearing [Mag]: 228.0° to 345.0°				Arc Distance: Out to 45.0 NM Altitude: 10800.0 to 14600.0 ft		
2	UDT ESV ILC ILC [IFPA]	N38° 15' 00.69", W114° 23' 39.22"	16.0 E	130	9347.1	116.3	UDT ESV ILC	
ESV:		Bearing [True]: 146.0° to 156.0° Bearing [Mag]: 130.0° to 140.0°				Arc Distance: Out to 77.0 NM Altitude: 12900.0 to 23900.0 ft		
3	UDT ESV PGS PGS [IFPA]	N35° 37' 28.96", W113° 32' 40.08"	15.0 E	130	4760	112.0	UDT ESV PGS	
ESV:		Bearing [True]: 323.0° to 354.0° Bearing [Mag]: 308.0° to 339.0°				Arc Distance: Out to 118.0 NM Altitude: 11900.0 to 14800.0 ft		
4	UDT ESV EED EED [IFPA]	N34° 45' 57.62", W114° 28' 26.77"	15.0 E	130	689	115.2	UDT ESV EED	
ESV:		Bearing [True]: 239.0° to 5.0° Bearing [Mag]: 224.0° to 350.0°				Arc Distance: Out to 99.0 NM Altitude: 7200.0 to 13100.0 ft		
5	UDT ESV LAS LAS [IFPA]	N36° 04' 46.93", W115° 09' 35.27"	15.0 E	130	2158.8	116.9	UDT ESV LAS	
ESV:		Bearing [True]: 44.0° to 139.0° Bearing [Mag]: 29.0° to 124.0°				Arc Distance: Out to 115.0 NM Altitude: 10000.0 to 22000.0 ft		
6	UDT ESV PGS PGS [IFPA]	N35° 37' 28.96", W113° 32' 40.08"	15.0 E	130	4760	112.0	UDT ESV PGS	
ESV:		Bearing [True]: 298.0° to 46.0° Bearing [Mag]: 283.0° to 31.0°				Arc Distance: Out to 83.0 NM Altitude: 9900.0 to 20000.0 ft		
7	UDT ESV BLD BLD [IFPA]	N35° 59' 44.84", W114° 51' 48.88"	15.0 E	130	3641	116.7	UDT ESV BLD	
ESV:		Bearing [True]: 349.0° to 34.0° Bearing [Mag]: 334.0° to 19.0°				Arc Distance: Out to 127.0 NM Altitude: 12600.0 to 18900.0 ft		
8	UDT ESV ILC ILC [IFPA]	N38° 15' 00.69", W114° 23' 39.22"	16.0 E	130	9347.1	116.3	UDT ESV ILC	
ESV:		Bearing [True]: 79.0° to 171.0° Bearing [Mag]: 63.0° to 155.0°				Arc Distance: Out to 76.0 NM Altitude: 12900.0 to 24000.0 ft		
9	UDT ESV LAS LAS [IFPA]	N36° 04' 46.93", W115° 09' 35.27"	15.0 E	130	2158.8	116.9	UDT ESV LAS	
ESV:		Bearing [True]: 12.0° to 41.0° Bearing [Mag]: 357.0° to 26.0°				Arc Distance: Out to 74.0 NM Altitude: 11900.0 to 14500.0 ft		
10	UDT ESV EHK EHK [IFPA]	N37° 47' 14.39", W113° 04' 05.63"	16.0 E	130	5482.3	117.3	UDT ESV EHK	
ESV:		Bearing [True]: 275.0° to 284.0° Bearing [Mag]: 259.0° to 268.0°				Arc Distance: Out to 94.0 NM Altitude: 17700.0 to 18900.0 ft		





DME DME Assessment Results for RATPK1 path KLAS:RW26L:DER\_LEELN

Graphic Depiction 1



## DME DME Assessment Results for RATPK1 path KLAS:RW26R:DER\_LEELN

### Results Summary

Flyability:	Completed
DME/DME:	Completed - No Critical DMEs
Name:	Bob CTR Graham
Project File:	C:\Users\Bob CTR Graham\Desktop\AREA NAV Projects and TARGETS Files\LAS METROPLEX\KLAS FINAL PACKAGES\RATPK\20190909_KLAS RATPK.tgs
Output File:	C:\Users\Bob CTR Graham\Desktop\AREA NAV Projects and TARGETS Files\LAS METROPLEX\KLAS FINAL PACKAGES\RATPK\KLAS [IFPA] RATPK1 20190910_1551 MST\KLAS-RW26R-DER_LEELN\KLAS RATPK1 SID KLAS RW26R LEELN 20190910_1551 MST.pdf
Procedure Name:	RATPK1
Software: DmeDmePlugin:	5.6.0
Date/Time:	09/10/2019 15:51 MST
Databases:	DTED Level o MAX

### Failures

No Failures

### Warnings

No Warnings

### Notes For Flight Check

None

### Flight Plan

Name	Type	Lat/Lon	Altitude (ft)	VNAV Mode	Ground Speed (kts)	Turn Type	Leg Type
KLAS:RW26R:DER	WP	N36° 04' 34.92", W115° 10' 12.69"	2179.2	VNAV	130	FLY_OVER	TF
KLAS:RW26R-VA End	WP	N36° 04' 34.84", W115° 11' 27.11"	2682	VNAV	145	FLY_OVER	TF
LEELN	WP	N36° 04' 35.00", W115° 16' 54.00"	3430	VNAV	200	FLY_BY	TF

Climb Gradient:  
500.0 ft/NM up to 2682.0 ft MSL  
200.0 ft/NM

### Flyability

Flight Type:	SID
Selected Airport:	KLAS [IFPA]
Climb Gradient:	None assigned
Speeds:	130 at the Runway DER
	145 at the end of the VA or VI leg
	200 Ground Speed to 11000 FT
	240 Ground Speed to 18000 FT
	260 Ground Speed to 24000 FT
	340 Ground Speed above 24000 FT
Descent During a Turn:	Allowed
VNAV Mode:	Flight Plan

## DME DME Assessment Results for RATPK1 path KLAS:RW26R:DER\_LEELN

DME/DME	
RNP:	RNP 2
Flight Mode:	Manual
Line of Sight (DTED Level 0 Max):	Evaluated
Inertial Drift:	Enabled
Initial Drift:	0.558 NM
INS Drift Rate:	8.0 NM/Hour
Range Mode:	OSV
RNP Edges:	Evaluated
Min DME Range:	3.0 NM
DME Types:	DME, VOR-DME, VORTAC
DME Include Angles:	30 to 150
Critical DMEs:	Allowed
DoD Facilities:	Not included
Foreign Facilities:	Not included
High DMEs:	Included
Low DMEs:	Included
Terminal DMEs:	Included
Flight Check DMEs:	Not selected
Higher Altitudes:	Not Evaluated
Near Maximum Altitude:	Not Evaluated
Automatic ESVs:	Not enabled
Disabled DMEs:	None

DME/DME (Continued)										
DMEs Used										
#	Name	Lat/Lon	MAGVAR	Range	Type	Source	Critical	Status	Time	Distance

Flight Check DME Selection						
Distance [NM]	Selected DMEs					Alternate
0.0						

Inertial Drift Segments			
#	Start Location	End Location	Length [NM]
1	N36° 04' 35.07", W115° 07' 13.23"	N36° 04' 27.26", W115° 10' 02.96"	2.2903
2	N36° 04' 25.36", W115° 10' 04.05"	N35° 55' 21.62", W114° 57' 06.08"	13.8641
3	N36° 41' 00.59", W114° 20' 51.51"	N36° 42' 59.45", W114° 19' 19.23"	2.3337
4	N36° 49' 46.80", W114° 14' 02.22"	N36° 56' 50.87", W114° 08' 31.02"	8.3343
5	N36° 04' 24.99", W115° 03' 55.43"	N36° 03' 24.88", W114° 57' 34.20"	5.2335
6	N36° 02' 55.02", W114° 54' 25.66"	N36° 04' 25.06", W115° 09' 41.16"	12.4271
7	N36° 04' 25.06", W115° 09' 43.75"	N36° 08' 31.30", W114° 58' 49.20"	9.7234
8	N36° 09' 10.33", W115° 18' 11.41"	N36° 11' 46.11", W114° 52' 52.04"	20.6078
9	N36° 04' 35.14", W115° 04' 57.21"	N36° 03' 24.78", W114° 57' 32.74"	6.1025
10	N36° 02' 55.02", W114° 54' 25.66"	N36° 04' 31.17", W115° 10' 13.31"	12.8695
11	N36° 04' 29.26", W115° 10' 14.41"	N36° 05' 51.77", W115° 09' 27.19"	1.5152
12	N36° 05' 53.71", W115° 09' 26.07"	N36° 08' 31.28", W114° 58' 49.38"	8.9661
13	N36° 04' 25.17", W115° 07' 30.36"	N36° 30' 59.93", W114° 38' 51.82"	35.2089
14	N36° 37' 09.02", W114° 39' 54.26"	N36° 39' 35.85", W114° 40' 19.15"	2.4701
15	N36° 03' 32.07", W115° 10' 47.12"	N36° 11' 46.00", W115° 11' 11.26"	8.2396
16	N36° 11' 46.10", W115° 09' 55.78"	N36° 11' 46.15", W115° 09' 13.32"	0.5711
17	N36° 02' 55.02", W114° 54' 25.66"	N36° 05' 54.88", W115° 09' 12.81"	12.3225
18	N36° 05' 56.83", W115° 09' 11.69"	N36° 11' 26.47", W115° 12' 12.69"	6.0105
19	N37° 17' 24.95", W114° 46' 47.20"	N37° 45' 42.30", W114° 51' 41.79"	28.5593
20	N38° 06' 11.48", W114° 55' 17.51"	N36° 22' 04.14", W114° 37' 21.47"	105.1087
21	N36° 03' 30.07", W115° 10' 35.68"	N36° 04' 34.92", W115° 10' 12.69"	1.1244

# DME DME Assessment Results for RATPK1 path KLAS:RW26R:DER\_LEELN

## Available DMEs by Waypoints

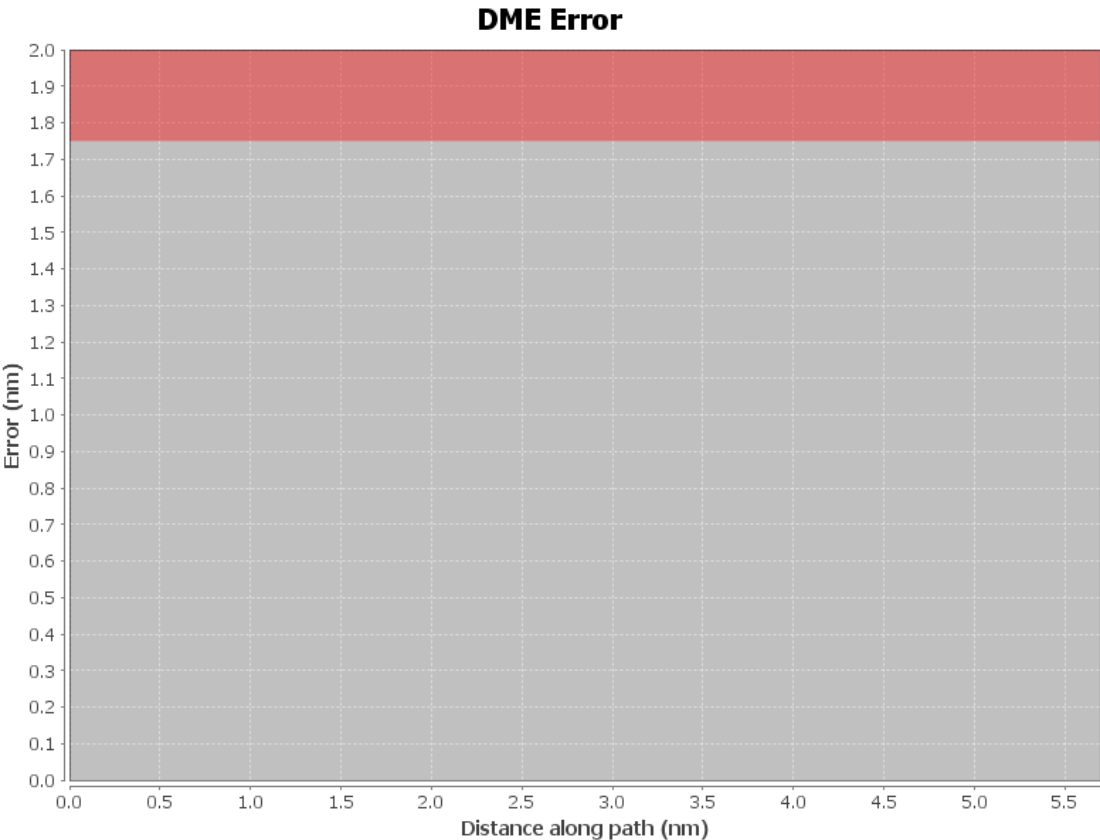
Waypoint Before	Waypoint After	DME List
KLAS:RW26R:DER	KLAS:RW26R-VA End	
KLAS:RW26R-VA End	LEELN	

## User Data Files

#	File Name
1	UserDMEsKLAS [IFPA] RATPK1_SID_20190904_1754 MST.udt

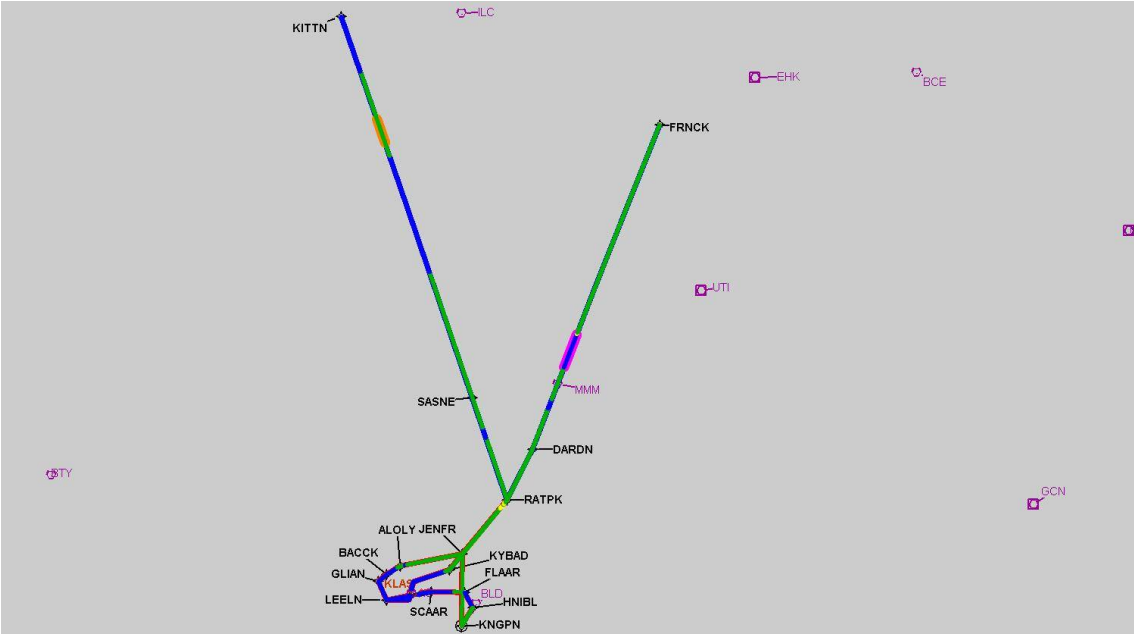
## User DMEs

#	Name	Lat/Lon	MAGVAR	Range	Elevation [ft]	Frequency	Replaces	Status
1	UDT ESV UTI UTI [IFPA]	N37° 01' 03.43", W113° 31' 04.44"	12.0 E	25	2848	108.6	UDT ESV UTI	
	ESV:	Bearing [True]: 240.0° to 357.0° Bearing [Mag]: 228.0° to 345.0°				Arc Distance: Out to 45.0 NM Altitude: 10800.0 to 14600.0 ft		
2	UDT ESV ILC ILC [IFPA]	N38° 15' 00.69", W114° 23' 39.22"	16.0 E	130	9347.1	116.3	UDT ESV ILC	
	ESV:	Bearing [True]: 146.0° to 156.0° Bearing [Mag]: 130.0° to 140.0°				Arc Distance: Out to 77.0 NM Altitude: 12900.0 to 23900.0 ft		
3	UDT ESV PGS PGS [IFPA]	N35° 37' 28.96", W113° 32' 40.08"	15.0 E	130	4760	112.0	UDT ESV PGS	
	ESV:	Bearing [True]: 323.0° to 354.0° Bearing [Mag]: 308.0° to 339.0°				Arc Distance: Out to 118.0 NM Altitude: 11900.0 to 14800.0 ft		
4	UDT ESV EED EED [IFPA]	N34° 45' 57.62", W114° 28' 26.77"	15.0 E	130	689	115.2	UDT ESV EED	
	ESV:	Bearing [True]: 239.0° to 5.0° Bearing [Mag]: 224.0° to 350.0°				Arc Distance: Out to 99.0 NM Altitude: 7200.0 to 13100.0 ft		
5	UDT ESV LAS LAS [IFPA]	N36° 04' 46.93", W115° 09' 35.27"	15.0 E	130	2158.8	116.9	UDT ESV LAS	
	ESV:	Bearing [True]: 44.0° to 139.0° Bearing [Mag]: 29.0° to 124.0°				Arc Distance: Out to 115.0 NM Altitude: 10000.0 to 22000.0 ft		
6	UDT ESV PGS PGS [IFPA]	N35° 37' 28.96", W113° 32' 40.08"	15.0 E	130	4760	112.0	UDT ESV PGS	
	ESV:	Bearing [True]: 298.0° to 46.0° Bearing [Mag]: 283.0° to 31.0°				Arc Distance: Out to 83.0 NM Altitude: 9900.0 to 20000.0 ft		
7	UDT ESV BLD BLD [IFPA]	N35° 59' 44.84", W114° 51' 48.88"	15.0 E	130	3641	116.7	UDT ESV BLD	
	ESV:	Bearing [True]: 349.0° to 34.0° Bearing [Mag]: 334.0° to 19.0°				Arc Distance: Out to 127.0 NM Altitude: 12600.0 to 18900.0 ft		
8	UDT ESV ILC ILC [IFPA]	N38° 15' 00.69", W114° 23' 39.22"	16.0 E	130	9347.1	116.3	UDT ESV ILC	
	ESV:	Bearing [True]: 79.0° to 171.0° Bearing [Mag]: 63.0° to 155.0°				Arc Distance: Out to 76.0 NM Altitude: 12900.0 to 24000.0 ft		
9	UDT ESV LAS LAS [IFPA]	N36° 04' 46.93", W115° 09' 35.27"	15.0 E	130	2158.8	116.9	UDT ESV LAS	
	ESV:	Bearing [True]: 12.0° to 41.0° Bearing [Mag]: 357.0° to 26.0°				Arc Distance: Out to 74.0 NM Altitude: 11900.0 to 14500.0 ft		
10	UDT ESV EHK EHK [IFPA]	N37° 47' 14.39", W113° 04' 05.63"	16.0 E	130	5482.3	117.3	UDT ESV EHK	
	ESV:	Bearing [True]: 275.0° to 284.0° Bearing [Mag]: 259.0° to 268.0°				Arc Distance: Out to 94.0 NM Altitude: 17700.0 to 18900.0 ft		



DME DME Assessment Results for RATPK1 path KLAS:RW26R:DER\_LEELN

Graphic Depiction 1



## DME DME Assessment Results for RATPK1 path RATPK\_FRNCK

### Results Summary

Flyability:	Completed
DME/DME:	Completed - No Critical DMEs
Name:	Bob CTR Graham
Project File:	C:\Users\Bob CTR Graham\Desktop\AREA NAV Projects and TARGETS Files\LAS METROPLEX\KLAS FINAL PACKAGES\RATPK\20190909_KLAS RATPK.tgs
Output File:	C:\Users\Bob CTR Graham\Desktop\AREA NAV Projects and TARGETS Files\LAS METROPLEX\KLAS FINAL PACKAGES\RATPK\KLAS [IFPA] RATPK1 20190910_1551 MST\RATPK_FRNCK\KLAS RATPK1 SID RATPK FRNCK 20190910_1551 MST.pdf
Procedure Name:	RATPK1
Software: DmeDmePlugin:	5.6.0
Date/Time:	09/10/2019 15:51 MST
Databases:	DTED Level o MAX

### Failures

No Failures

### Warnings

EXCEEDED_DRIFT_TIME	Combination of critical/no-coverage segments exceeded combined drift time (12.44 minutes) from RATPK to FRNCK
---------------------	---

### Notes For Flight Check

None

### Flight Plan

Name	Type	Lat/Lon	Altitude (ft)	VNAV Mode	Ground Speed (kts)	Turn Type	Leg Type
RATPK	WP	N36° 22' 04.14", W114° 37' 21.47"	10200	VNAV	200	FLY_BY	TF
DARDN	WP	N36° 32' 33.81", W114° 27' 23.93"	10200	VNAV	200	FLY_BY	TF
FRNCK	WP	N37° 40' 53.77", W113° 33' 38.71"	15000	VNAV	240	FLY_BY	TF
Climb Gradient: 320.0 ft/NM up to 5000.0 ft MSL 200.0 ft/NM							

### Flyability

Flight Type:	SID
Selected Airport:	KLAS [IFPA]
Climb Gradient:	None assigned
Speeds:	130 at the Runway DER
	145 at the end of the VA or VI leg
	200 Ground Speed to 11000 FT
	240 Ground Speed to 18000 FT
	260 Ground Speed to 24000 FT
	340 Ground Speed above 24000 FT
Descent During a Turn:	Allowed
VNAV Mode:	Flight Plan

## DME DME Assessment Results for RATPK1 path RATPK\_FRNCK

DME/DME	
RNP:	RNP 2
Flight Mode:	Manual
Line of Sight (DTED Level 0 Max):	Evaluated
Inertial Drift:	Enabled
Initial Drift:	0.558 NM
INS Drift Rate:	8.0 NM/Hour
Range Mode:	OSV
RNP Edges:	Evaluated
Min DME Range:	3.0 NM
DME Types:	DME, VOR-DME, VORTAC
DME Include Angles:	30 to 150
Critical DMEs:	Allowed
DoD Facilities:	Not included
Foreign Facilities:	Not included
High DMEs:	Included
Low DMEs:	Included
Terminal DMEs:	Included
Flight Check DMEs:	Not selected
Higher Altitudes:	Not Evaluated
Near Maximum Altitude:	Not Evaluated
Automatic ESVs:	Not enabled
Disabled DMEs:	None

DME/DME (Continued)										
DMEs Used										
#	Name	Lat/Lon	MAGVAR	Range	Type	Source	Critical	Status	Time	Distance
1	EED	N34° 45' 57.62", W114° 28' 26.77"	15.0 E	130	H	IFPA	NO	Enabled	0.2 %	0.2 %
2	LAS	N36° 04' 46.93", W115° 09' 35.27"	15.0 E	130	H	IFPA	NO	Enabled	14.9 %	14.8 %
3	ILC	N38° 15' 00.69", W114° 23' 39.22"	16.0 E	130	H	IFPA	NO	Enabled	37.5 %	37.6 %
4	EHK	N37° 47' 14.39", W113° 04' 05.63"	16.0 E	130	H	IFPA	NO	Enabled	17.5 %	17.6 %
5	UTI	N37° 01' 03.43", W113° 31' 04.44"	12.0 E	25	T	IFPA	NO	Enabled	56.9 %	56.8 %
6	MMM	N36° 46' 09.31", W114° 16' 38.83"	16.0 E	40	L	IFPA	NO	Enabled	53.8 %	53.7 %
7	BLD	N35° 59' 44.84", W114° 51' 48.88"	15.0 E	130	H	IFPA	NO	Enabled	58.5 %	58.6 %
8	PGS	N35° 37' 28.96", W113° 32' 40.08"	15.0 E	130	H	IFPA	NO	Enabled	62.5 %	62.4 %

Flight Check DME Selection						
Distance [NM]	Selected DMEs					Alternate
0.0	PGS	MMM	BLD	LAS	EED	
0.3	PGS	MMM	BLD	LAS		
14.0	PGS	MMM	BLD			
14.7	PGS	MMM				
23.1						
25.5	UTI	PGS				
33.5						
41.8	UTI	PGS	MMM			
53.5	UTI	MMM	BLD	PGS		
58.6	UTI	MMM	BLD	ILC	PGS	
69.1	UTI	BLD	ILC	PGS		
69.4	UTI	BLD	ILC			
77.3	ILC	EHK	UTI	BLD		
87.2	ILC	EHK	BLD			



## DME DME Assessment Results for RATPK1 path RATPK\_FRNCK

Inertial Drift Segments			
#	Start Location	End Location	Length [NM]
1	N36° 04' 35.07", W115° 07' 13.23"	N36° 04' 27.26", W115° 10' 02.96"	2.2903
2	N36° 04' 25.36", W115° 10' 04.05"	N35° 55' 21.62", W114° 57' 06.08"	13.8641
3	N36° 41' 00.59", W114° 20' 51.51"	N36° 42' 59.45", W114° 19' 19.23"	2.3337
4	N36° 49' 46.80", W114° 14' 02.22"	N36° 56' 50.87", W114° 08' 31.02"	8.3343
5	N36° 04' 24.99", W115° 03' 55.43"	N36° 03' 24.88", W114° 57' 34.20"	5.2335
6	N36° 02' 55.02", W114° 54' 25.66"	N36° 04' 25.06", W115° 09' 41.16"	12.4271
7	N36° 04' 25.06", W115° 09' 43.75"	N36° 08' 31.30", W114° 58' 49.20"	9.7234
8	N36° 09' 10.33", W115° 18' 11.41"	N36° 11' 46.11", W114° 52' 52.04"	20.6078
9	N36° 04' 35.14", W115° 04' 57.21"	N36° 03' 24.78", W114° 57' 32.74"	6.1025
10	N36° 02' 55.02", W114° 54' 25.66"	N36° 04' 31.17", W115° 10' 13.31"	12.8695
11	N36° 04' 29.26", W115° 10' 14.41"	N36° 05' 51.77", W115° 09' 27.19"	1.5152
12	N36° 05' 53.71", W115° 09' 26.07"	N36° 08' 31.28", W114° 58' 49.38"	8.9661
13	N36° 04' 25.17", W115° 07' 30.36"	N36° 30' 59.93", W114° 38' 51.82"	35.2089
14	N36° 37' 09.02", W114° 39' 54.26"	N36° 39' 35.85", W114° 40' 19.15"	2.4701
15	N36° 03' 32.07", W115° 10' 47.12"	N36° 11' 46.00", W115° 11' 11.26"	8.2396
16	N36° 11' 46.10", W115° 09' 55.78"	N36° 11' 46.15", W115° 09' 13.32"	0.5711
17	N36° 02' 55.02", W114° 54' 25.66"	N36° 05' 54.88", W115° 09' 12.81"	12.3225
18	N36° 05' 56.83", W115° 09' 11.69"	N36° 11' 26.47", W115° 12' 12.69"	6.0105
19	N37° 17' 24.95", W114° 46' 47.20"	N37° 45' 42.30", W114° 51' 41.79"	28.5593
20	N38° 06' 11.48", W114° 55' 17.51"	N36° 22' 04.14", W114° 37' 21.47"	105.1087
21	N36° 03' 30.07", W115° 10' 35.68"	N36° 04' 34.92", W115° 10' 12.69"	1.1244

Available DMEs by Waypoints		
Waypoint Before	Waypoint After	DME List
RATPK	DARDN	EED, BLD, MMM, PGS, LAS
DARDN	FRNCK	ILC, EHK, BLD, UTI, MMM, PGS, LAS

# DME DME Assessment Results for RATPK1 path RATPK\_FRNCK

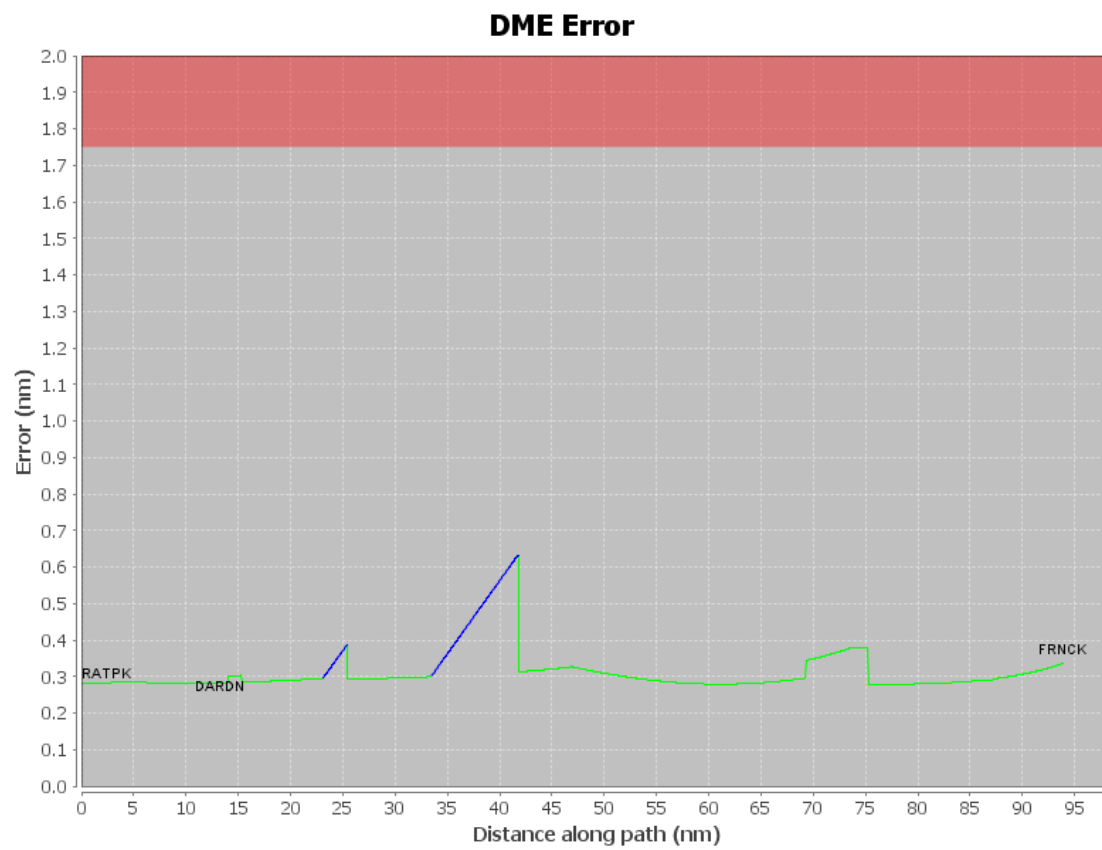
## User Data Files

#	File Name
1	UserDMEsKLAS [IFPA] RATPK1 SID_20190904_1754 MST.udt

## User DMEs

#	Name	Lat/Lon	MAGVAR	Range	Elevation [ft]	Frequency	Replaces	Status
1	UDT ESV UTI UTI [IFPA]	N37° 01' 03.43", W113° 31' 04.44"	12.0 E	25	2848	108.6	UDT ESV UTI	
ESV:		Bearing [True]: 240.0° to 357.0° Bearing [Mag]: 228.0° to 345.0°				Arc Distance: Out to 45.0 NM Altitude: 10800.0 to 14600.0 ft		
2	UDT ESV ILC ILC [IFPA]	N38° 15' 00.69", W114° 23' 39.22"	16.0 E	130	9347.1	116.3	UDT ESV ILC	
ESV:		Bearing [True]: 146.0° to 156.0° Bearing [Mag]: 130.0° to 140.0°				Arc Distance: Out to 77.0 NM Altitude: 12900.0 to 23900.0 ft		
3	UDT ESV PGS PGS [IFPA]	N35° 37' 28.96", W113° 32' 40.08"	15.0 E	130	4760	112.0	UDT ESV PGS	
ESV:		Bearing [True]: 323.0° to 354.0° Bearing [Mag]: 308.0° to 339.0°				Arc Distance: Out to 118.0 NM Altitude: 11900.0 to 14800.0 ft		
4	UDT ESV EED EED [IFPA]	N34° 45' 57.62", W114° 28' 26.77"	15.0 E	130	689	115.2	UDT ESV EED	
ESV:		Bearing [True]: 239.0° to 5.0° Bearing [Mag]: 224.0° to 350.0°				Arc Distance: Out to 99.0 NM Altitude: 7200.0 to 13100.0 ft		
5	UDT ESV LAS LAS [IFPA]	N36° 04' 46.93", W115° 09' 35.27"	15.0 E	130	2158.8	116.9	UDT ESV LAS	
ESV:		Bearing [True]: 44.0° to 139.0° Bearing [Mag]: 29.0° to 124.0°				Arc Distance: Out to 115.0 NM Altitude: 10000.0 to 22000.0 ft		
6	UDT ESV PGS PGS [IFPA]	N35° 37' 28.96", W113° 32' 40.08"	15.0 E	130	4760	112.0	UDT ESV PGS	
ESV:		Bearing [True]: 298.0° to 46.0° Bearing [Mag]: 283.0° to 31.0°				Arc Distance: Out to 83.0 NM Altitude: 9900.0 to 20000.0 ft		
7	UDT ESV BLD BLD [IFPA]	N35° 59' 44.84", W114° 51' 48.88"	15.0 E	130	3641	116.7	UDT ESV BLD	
ESV:		Bearing [True]: 349.0° to 34.0° Bearing [Mag]: 334.0° to 19.0°				Arc Distance: Out to 127.0 NM Altitude: 12600.0 to 18900.0 ft		
8	UDT ESV ILC ILC [IFPA]	N38° 15' 00.69", W114° 23' 39.22"	16.0 E	130	9347.1	116.3	UDT ESV ILC	
ESV:		Bearing [True]: 79.0° to 171.0° Bearing [Mag]: 63.0° to 155.0°				Arc Distance: Out to 76.0 NM Altitude: 12900.0 to 24000.0 ft		
9	UDT ESV LAS LAS [IFPA]	N36° 04' 46.93", W115° 09' 35.27"	15.0 E	130	2158.8	116.9	UDT ESV LAS	
ESV:		Bearing [True]: 12.0° to 41.0° Bearing [Mag]: 357.0° to 26.0°				Arc Distance: Out to 74.0 NM Altitude: 11900.0 to 14500.0 ft		
10	UDT ESV EHK EHK [IFPA]	N37° 47' 14.39", W113° 04' 05.63"	16.0 E	130	5482.3	117.3	UDT ESV EHK	
ESV:		Bearing [True]: 275.0° to 284.0° Bearing [Mag]: 259.0° to 268.0°				Arc Distance: Out to 94.0 NM Altitude: 17700.0 to 18900.0 ft		

## DME DME Assessment Results for RATPK1 path RATPK\_FRNCK



DME DME Assessment Results for RATPK1 path RATPK\_FRNCK

Graphic Depiction 1

