

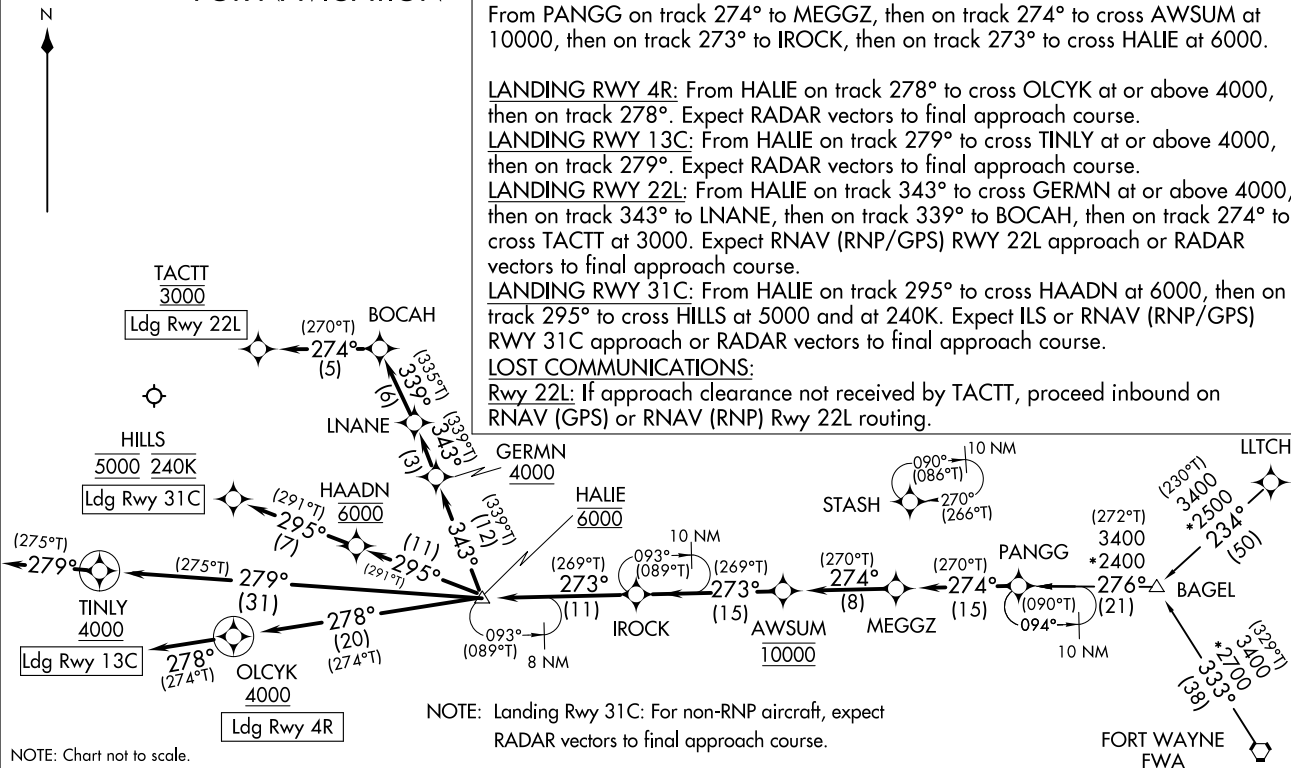
Flight Procedures Cover Page	Task Action: FLIGHT CHECK	Task Type: STAR	Estimated Chart Date: 08/10/2023	APWS Task ID: 210A29E824DA4F8D9155ECB1DA2F3B21	APWS Project ID: 04100A09F47541A89FBBAFF8B74A9700
Procedure: STAR PANGG FIVE (RNAV) CHICAGO IL KMDW		Enroute: YES	Specialist: Campbell, Colin		Agreement Number:
Airport ID: KMDW			Airport City: CHICAGO		State: IL
Facility ID:	Facility Type:	Flight Inspection Remark Type: New FC Slot			
<div>Procedure Comments:</div> <div>SUMMARY OF CHANGES: LANDING RWY 4R: TRANSITION NOW ENDS WITH A FM LEG RATHER THAN EXPECTING RNAV (RNP) RWY 4R. LANDING RWY 13C: OLCYK REMOVED FROM TRANSITION ROUTING FOR WP ATTRIBUTE CRITERIA COMPLIANCE.  CONTACT: ALLAN WILL, AJV-A423, (405) 954-6103</div> <div><div>05/04/2023</div><div><div>QUALITY 14 CHECKED</div><div>QUALITY 41 CHECKED</div></div></div>					

<b>FIPC DME/DME FORM</b>									
<b>PROCEDURE:</b> STAR PANGG FIVE (RNAV) CHICAGO IL KMDW				<b>AIRPORT NAME:</b> CHICAGO MIDWAY INTL		<b>AIRPORT ID:</b> KMDW		<b>SPECIAL CONTROL NO:</b> BG-05-111-23	
<b>FAC ID:</b> PANGG5			<b>CITY:</b> CHICAGO			<b>ST:</b> IL		<b>ORIG CHART DATE:</b> 08/10/2023	
<b>DFL TYPE:</b> PROC/D		<b>THIRD PARTY:</b> <input type="checkbox"/> YES		<b>EST. TIME ON SITE:</b> 1.0		<b>REIMB. NUMBER:</b>		<b>PTS TASK ID:</b> 210A29E824DA4F8D9155ECB1DA2F3B21	
<b>PREFLIGHT NOTES</b>									
<b>REVIEWER:</b> james onieal						<b>DATE:</b> 05/25/2023			
<b>COMMENTS:</b>						<b>CHECK ONE:</b>			
						<input type="checkbox"/> FLT CK REQ <input checked="" type="checkbox"/> NFCR <input type="checkbox"/> REJECT			
								YES	NO
						<b>CPV COMPLETE?</b>		X	
<b>PROCEDURE RESULTS</b>									
<b>INSPECTION DATE:</b> 05/26/2023		<b>CREW #:</b> VN357		<b>N #:</b>		<b>INSTRUMENT PROCEDURE STATUS:</b> <input checked="" type="checkbox"/> SAT <input type="checkbox"/> SAT W/CHANGES <input type="checkbox"/> UNSAT		<b>ARINC CODING:</b> <input checked="" type="checkbox"/> SAT <input type="checkbox"/> SAT/GOLD <input type="checkbox"/> UNSAT	
<b>FLIGHT INSPECTOR SIGNATURE:</b> james onieal @ 05/25/2023 21:53				<b>PRINTED NAME:</b> ONIEAL, JAMES BRIAN				<b>NOTAM INITIATED?</b> <input type="checkbox"/> YES <input checked="" type="checkbox"/> NO	
<b>FLIGHT INSPECTOR REMARKS:</b>									
<b>DME/DME STATUS:</b> <input type="checkbox"/> SAT <input type="checkbox"/> UNSAT		<b>SPECIALIST SIGNATURE:</b>				<b>PRINTED NAME:</b>			
<b>SPECIALIST REMARKS:</b>									
<b>IN-FLIGHT OBSTACLE REPORT</b>									
<b>OBSTRUCTION ID #:</b>		<b>COORDINATES OR LOCATION:</b>		<b>GNSS ALTITUDE (MSL):</b>		<b>BAROMETRIC ALTITUDE (MSL):</b>		<b>HEIGHT ABOVE GROUND LEVEL:</b>	

CHICAGO APP CON  
128.2 353.875  
D-ATIS  
132.75

RNAV 1-DME/DME/IRU or GPS.  
RADAR required.

PROTOTYPE-NOT  
FOR NAVIGATION



NOTE: Landing Rwy 31C: For non-RNP aircraft, expect  
RADAR vectors to final approach course.

# ARRIVAL ROUTE DESCRIPTION

BAGEL TRANSITION (BAGEL.PANGG5)

FORT WAYNE TRANSITION (FWA.PANGG5)

LLTCH TRANSITION (LLTCH.PANGG5)

From PANGG on track 274° to MEGGZ, then on track 274° to cross AWSUM at 10000, then on track 273° to IROCK, then on track 273° to cross HALIE at 6000.

LANDING RWY 4R: From HALIE on track 278° to cross OLCYK at or above 4000, then on track 278°. Expect RADAR vectors to final approach course.

LANDING RWY 13C: From HALIE on track 279° to cross TINLY at or above 4000, then on track 279°. Expect RADAR vectors to final approach course.

LANDING RWY 22L: From HALIE on track 343° to cross GERMN at or above 4000, then on track 343° to LNANE, then on track 339° to BOCAH, then on track 274° to cross TACTT at 3000. Expect RNAV (RNP/GPS) RWY 22L approach or RADAR vectors to final approach course.

LANDING RWY 31C: From HALIE on track 295° to cross HAADN at 6000, then on track 295° to cross HILLS at 5000 and at 240K. Expect ILS or RNAV (RNP/GPS) RWY 31C approach or RADAR vectors to final approach course.

## LOST COMMUNICATIONS:

Rwy 22L: If approach clearance not received by TACTT, proceed inbound on RNAV (GPS) or RNAV (RNP) Rwy 22L routing.

PANGG FOUR ARRIVAL (RNAV)  
(PANGG:PANGG4) 20APR23CHICAGO APP CON  
128.2 353.875  
D-ATIS  
132.75RNAV 1-DME/DME/IRU or GPS.  
RADAR required.

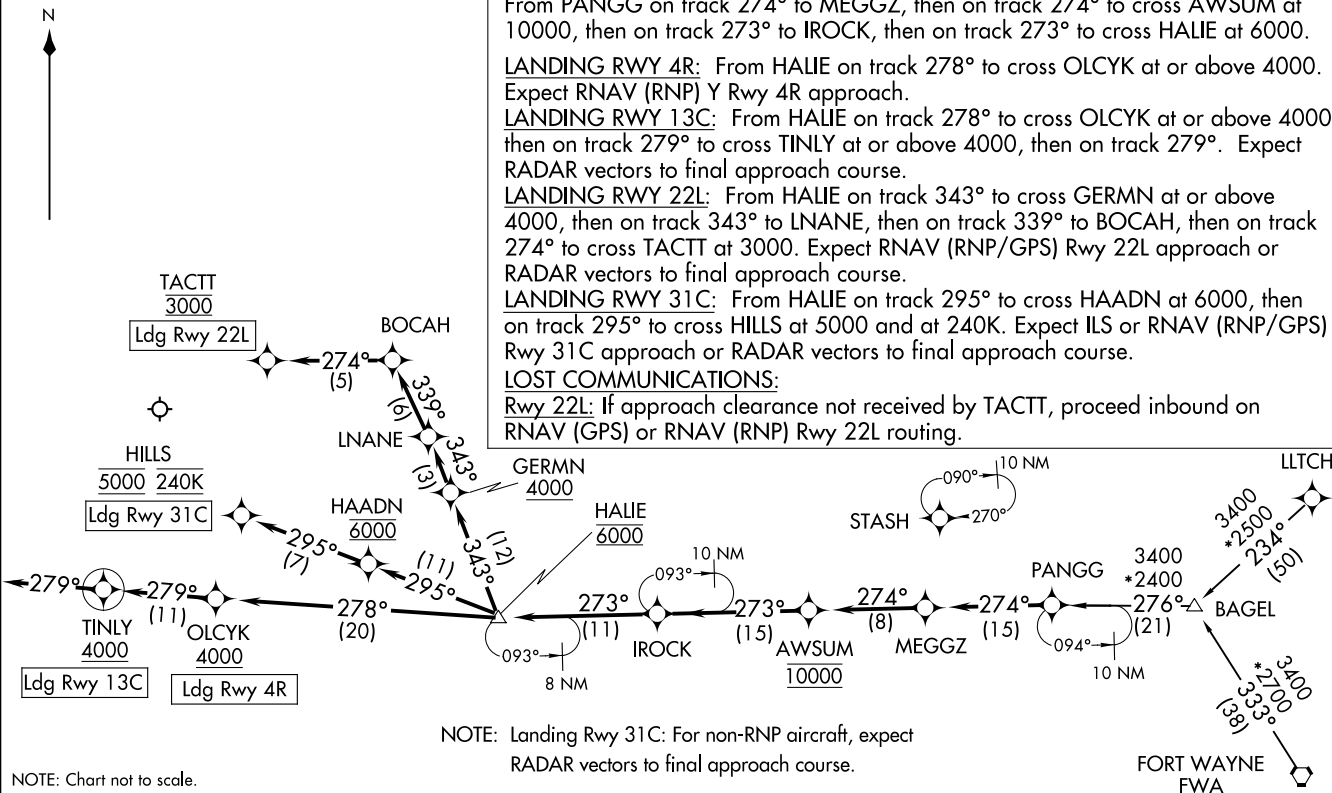
## ARRIVAL ROUTE DESCRIPTION

BAGEL TRANSITION (BAGEL.PANGG4)FORT WAYNE TRANSITION (FWA.PANGG4)LLTCH TRANSITION (LLTCH.PANGG4)

From PANGG on track 274° to MEGGZ, then on track 274° to cross AWSUM at 10000, then on track 273° to IROCK, then on track 273° to cross HALIE at 6000.

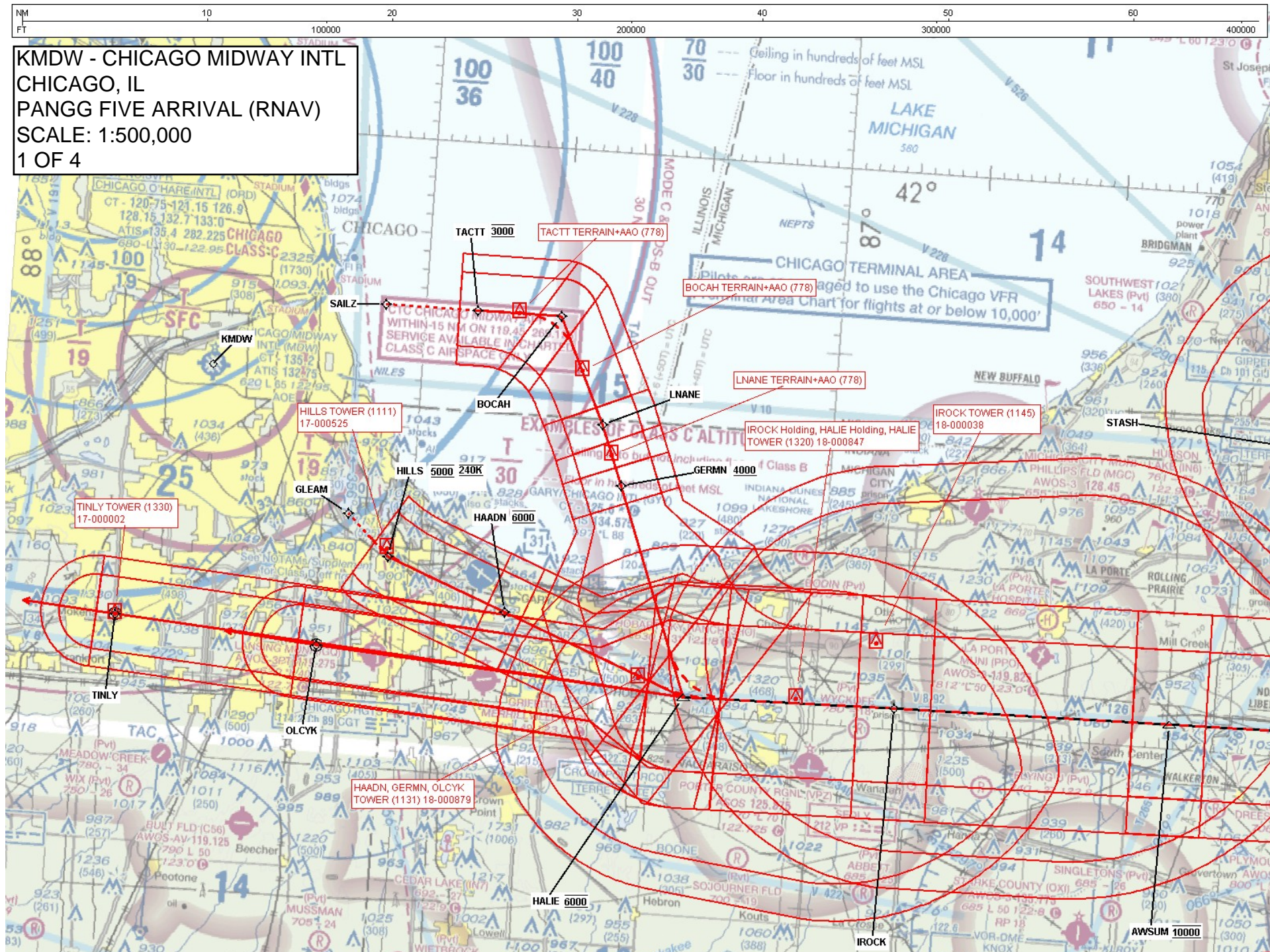
LANDING RWY 4R: From HALIE on track 278° to cross OLCYK at or above 4000. Expect RNAV (RNP) Y Rwy 4R approach.LANDING RWY 13C: From HALIE on track 278° to cross OLCYK at or above 4000, then on track 279° to cross TINLY at or above 4000, then on track 279°. Expect RADAR vectors to final approach course.LANDING RWY 22L: From HALIE on track 343° to cross GERMN at or above 4000, then on track 343° to LNAME, then on track 339° to BOCAH, then on track 274° to cross TACTT at 3000. Expect RNAV (RNP/GPS) Rwy 22L approach or RADAR vectors to final approach course.LANDING RWY 31C: From HALIE on track 295° to cross HAADN at 6000, then on track 295° to cross HILLS at 5000 and at 240K. Expect ILS or RNAV (RNP/GPS) Rwy 31C approach or RADAR vectors to final approach course.LOST COMMUNICATIONS:

Rwy 22L: If approach clearance not received by TACTT, proceed inbound on RNAV (GPS) or RNAV (RNP) Rwy 22L routing.

PANGG FOUR ARRIVAL (RNAV)  
(PANGG:PANGG4) 23110CHICAGO MIDWAY INTL (MDW)  
CHICAGO, ILLINOIS



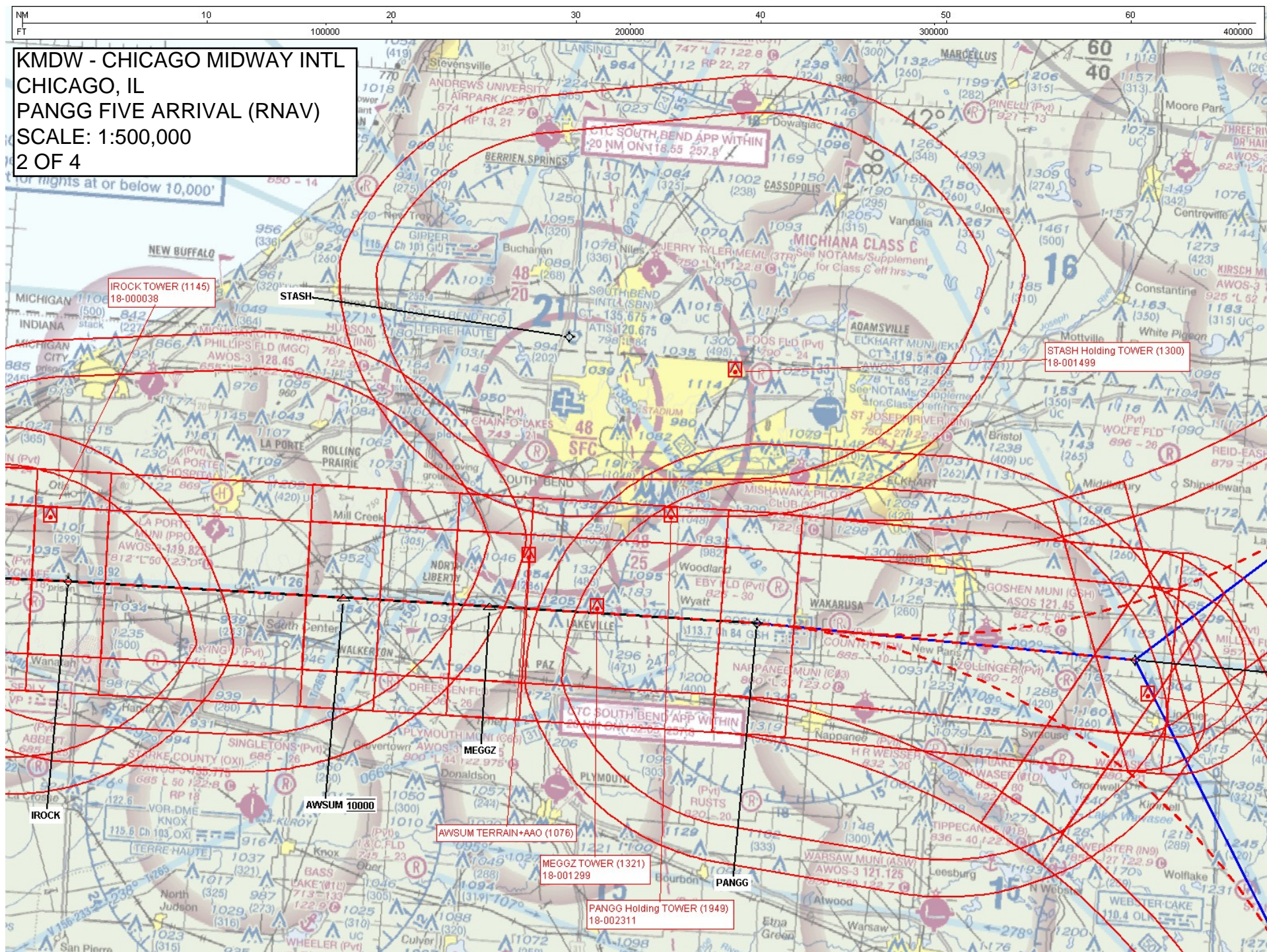
KMDW - CHICAGO MIDWAY INTL  
CHICAGO, IL  
PANGG FIVE ARRIVAL (RNAV)  
SCALE: 1:500,000  
1 OF 4





---

400000





KMDW - CHICAGO MIDWAY INTL  
CHICAGO, IL  
PANGG FIVE ARRIVAL (RNAV)  
SCALE: 1:500,000  
3 OF 4

