

Flight Procedures Cover Page	Task Action: Abbreviated Amendment	Task Type: IAP	Estimated Chart Date: 05/16/2024	APWS Task ID: 20C3F7F5BE24434BBBC259D59D03AB87	APWS Project ID: F6CA5ABB46274D70851E50508C3622A7
Procedure: RNAV (GPS) RWY 7 AMDT 0E		Enroute: NO	Specialist: Tyler, George		Agreement Number:
Airport ID: KSFM			Airport City: SANFORD		State: ME
Facility ID:	Facility Type:	Flight Inspection Remark Type:			
<div>Procedure Comments: ACTIVE AIRNAV DATA UTILIZED FOR KSFM AND RWYS.  VOR MON SUPPORTING MHT DECOMMISSIONING.  PROCESSED IAW TECHNICAL SUPPORT GROUP (AJF-17) MEMO DATED 07/07/2021 GUIDANCE FOR PROCEDURAL CHANGES REQUIRING FLIGHT INSPECTION/VALIDATION.  CONTACT: CASIMIR TABAKA, (405)954-7931.</div> <div><div>QUALITY 10 CHECKED</div><div>QUALITY 30 CHECKED</div></div>					

WAAS CH <b>86921</b> <b>W07A</b>	APP CRS <b>075°</b>	Rwy ldg TDZE <b>241</b> Apt Elev <b>244</b>
--	------------------------	---

OLD

RNAV (GPS) RWY 7

SANFORD SEACOAST RGNL (SFM)

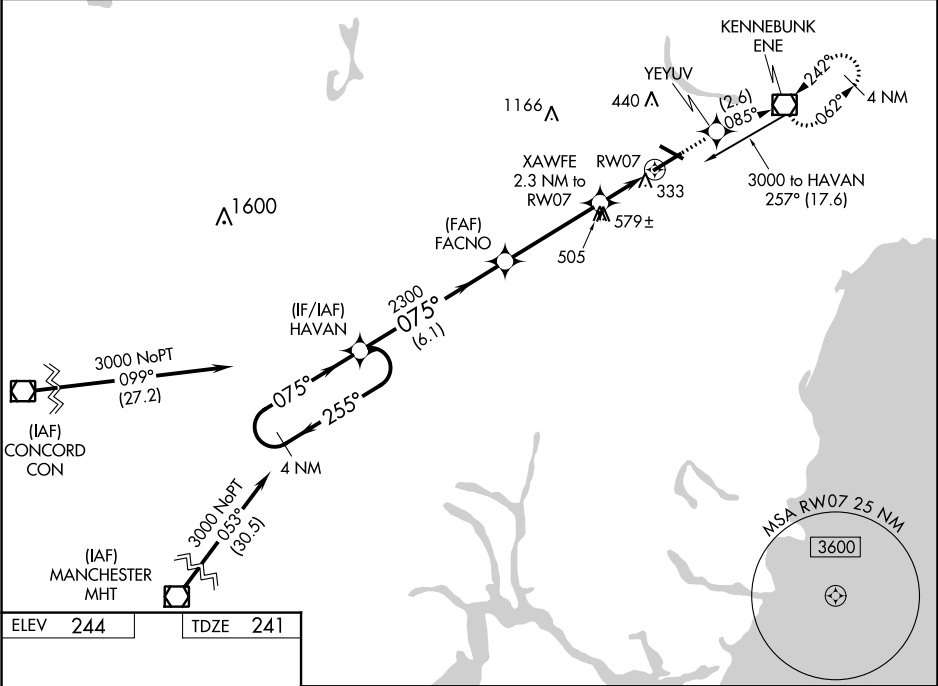
▼

▲

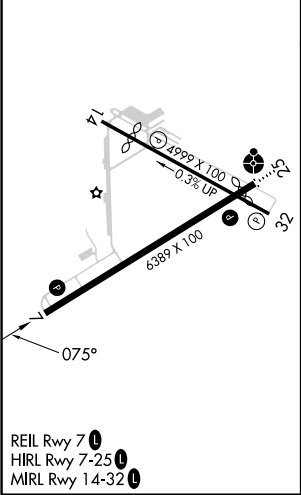
For uncompensated Baro-VNAV systems, LNAV/VNAV NA below -15°C (5°F) or above 54°C (130°F). Helicopter visibility reduction below ¾ SM NA. DME/DME RNP-0.3 NA. Baro-VNAV and VDP NA when using Rochester, NH altimeter setting. When local altimeter setting not received, use Rochester, NH altimeter setting: increase LPV DA to 479; increase LNAV/VNAV DA to 699 and visibility all Cats ½ SM, increase all MDA 40 feet, and Circling Cat C visibility ¼ SM.

MISSED APPROACH: Climb to 3000 direct YEYUV and on track 085° to ENE VOR/DME and hold, continue climb-in-hold to 3000.

AWOS-3PT <b>120.025</b>	PORTLAND APP CON* <b>119.75 269.35</b>	CLNC DEL <b>121.725</b>	UNICOM <b>123.075 (CTAF) 0</b>
----------------------------	---	----------------------------	-----------------------------------



ELEV <b>244</b>	TDZE <b>241</b>
-----------------	-----------------



4 NM Holding Pattern		3000	YEYUV	tr	ENE
HAVAN				085°	
3000 ← 255°		075° →	*LNAV only		
GP 3.00°		075°	XAWFE 2.3 NM to RW07		
TCH 57		2300	*1.7 NM to RW07		
VGSi and RNAV glidepath not coincident (VGSi Angle 3.00/TCH 53).		*1020			
		6.1 NM	4 NM	0.6 NM	1.7
CATEGORY	A	B	C	D	
LPV DA	441-¾		200 (200-¾)		
LNAV/VNAV DA	650-1⅓		409 (500-1⅓)		
LNAV MDA	840-1 599 (600-1)		840-1¾ 599 (600-1¾)		
CIRCLING	840-1 596 (600-1)		1180-2¾ 936 (1000-2¾)	1240-3 996 (1000-3)	