

Flight Procedures Cover Page	Task Action: P-NOTAM	Task Type: IAP	Estimated Chart Date: 09/05/2024	APWS Task ID: 2059536070DC4AAD8B788A7DB6D48D2E	APWS Project ID: AAE7FAB519F2423695EB6E4A6E6C3A53
Procedure: RNAV (RNP) Z RWY 9L AMDT 0E		Enroute: NO	Specialist: Palmer, Leo		Agreement Number:
Airport ID: KPHL			Airport City: PHILADELPHIA		State: PA
Facility ID:	Facility Type:	Flight Inspection Remark Type:			
<div>Procedure Comments: ESTABLISH ALTERNATE MINIMUMS</div> <div>PROCESSED IAW TECHNICAL SUPPORT GROUP (AJF-17) MEMO DATED 07/07/2021 GUIDANCE FOR PROCEDURAL CHANGES REQUIRING FLIGHT INSPECTION/VALIDATION.</div> <div>CONTACT JOHN BORDY, AJV-A33, 405-954-0980</div> <div>QUALITY 26 CHECKED</div> <div>QUALITY 9 CHECKED BEGUE</div>					

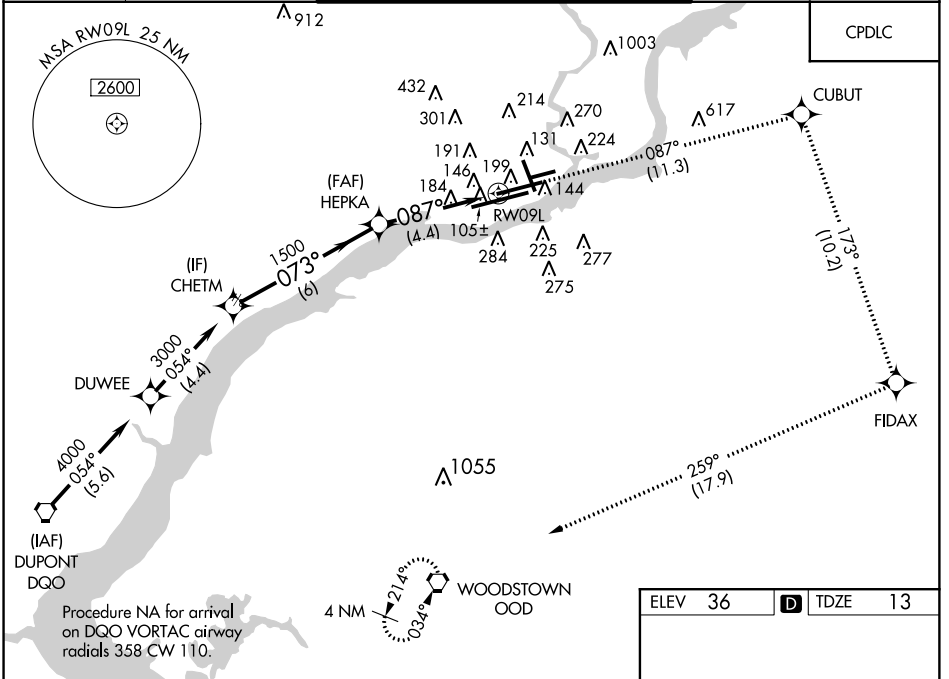
APP CRS	Rwy Idg	9500
087°	TDZE	13
	Apt Elev	36

# RNAV (RNP) Z RWY 9L

PHILADELPHIA INTL (PHL)

<p>▼</p> <p>For uncompensated Baro-VNAV systems, procedure NA below -12°C (10°F) or above 54°C (130°F). GPS required. For inop ALS, increase RNP 0.11 visibility all Cats to RVR 6000 and RNP 0.30 visibility all Cats to 1½ SM.</p>	<p>MALSR</p> <p>AS</p>	<p>MISSED APPROACH: Climb to 3000 on track 087° to CUBUT and on track 173° to FIDAX and on track 259° to OOD VORTAC and hold.</p>
--	------------------------	---

D-ATIS	PHILADELPHIA APP CON	PHILADELPHIA TOWER	GND CON	CLNC DEL
ARR 133.4	124.35 319.15	118.5 327.05 (Rwys 9L/27R, 8/26 and 17/35)	121.9 348.6	118.85 348.6
DEP 135.925		135.1 327.05 (Rwy 9R/27L)		



	3000	tr 087°	CUBUT	tr 173°	FIDAX	tr 259°	OOD
	3000	073°	HEPKA	1500	087°	RW09L	
	GP 3.00°	TCH 58	6 NM	4.4 NM			
CATEGORY	A	B	C	D			
RNP 0.11 DA	382/35	369 (400-¾)	382/32 369 (400-¾)	382/35 369 (400-¾)			
RNP 0.30 DA		434/45	421 (400-¾)				
AUTHORIZATION REQUIRED							
REIL Rwys 9L and 35 HIRL all Rwys							