

Flight Procedures Cover Page	Task Action: FLIGHT CHECK	Task Type: IAP	Estimated Chart Date: 02/25/2021	APWS Task ID: F2D2F56626EE4E80BAB68AB7D9F45D1A	APWS Project ID: D749979EE40045B1B80E9647EBD86828
Procedure: RNAV (GPS) RWY 18 AMDT 1B		Enroute: NO	Specialist: Combs, Patrick		Agreement Number:
Airport ID: KELY	Airport Name: ELY ARPT /YELLAND FLD/		Airport City: ELY		State: NV
Facility ID:	Facility Type:	Flight Inspection Remark Type: New FC Slot			
<div>Procedure Comments:</div> <div>ACTIVE AIRPORT/RUNWAY DATA USED FOR KELY.</div> <div>CLEARs NOTAM FDC 0/7486.</div> <div>CRC REMAINDER CHANGED FROM "6D1D96AE" TO "BF287766".</div> <div>CONTACT: WARDELL HENNING: 405-954-9954</div> <div><div>QUALITY 25 CHECKED</div><div>QUALITY 26 CHECKED</div></div>					

<b>FIPC BASIC FORM</b>						
<b>PROCEDURE:</b> RNAV (GPS) RWY 18 AMDT 1B			<b>AIRPORT NAME:</b> ELY/YELLAND FLD		<b>AIRPORT ID:</b> KELY	<b>SPECIAL CONTROL NO:</b> SG-04-086-21
<b>FAC ID:</b> KELY18.01		<b>CITY:</b> ELY			<b>ST:</b> NV	<b>ORIG CHART DATE:</b> 08/12/2021
<b>DFL TYPE:</b> PROC/S	<b>THIRD PARTY:</b> <input type="checkbox"/> YES	<b>EST. TIME ON SITE:</b> 0.4	<b>REIMB. NUMBER:</b>	<b>PTS TASK ID:</b>		
<b>PREFLIGHT NOTES</b>						
<b>REVIEWER:</b>					<b>DATE:</b>	
<b>COMMENTS:</b>					<b>CHECK ONE:</b> <input type="checkbox"/> FLT CK REQ <input type="checkbox"/> NFCR <input type="checkbox"/> REJECT <div style="display: flex; justify-content: space-between; border-top: 1px solid black; margin-top: 5px;"> <span></span> <span>YES</span> <span>NO</span> </div>	
					<b>CPV COMPLETE?</b>	
<b>PROCEDURE RESULTS</b>						
<b>INSPECTION DATE:</b> 05/12/2021	<b>CREW #:</b> VN235	<b>N #:</b> N59	<b>INSTRUMENT PROCEDURE STATUS:</b> <input checked="" type="checkbox"/> SAT <input type="checkbox"/> SAT W/CHANGES <input type="checkbox"/> UNSAT		<b>ARINC CODING:</b> <input type="checkbox"/> SAT <input checked="" type="checkbox"/> SAT/GOLD <input type="checkbox"/> UNSAT	
<b>FLIGHT INSPECTOR SIGNATURE:</b> thomas e molokie @ 05/12/2021 14:52			<b>PRINTED NAME:</b> MOLOKIE, THOMAS EDWARD			<b>NOTAM INITIATED?</b> <input type="checkbox"/> YES <input checked="" type="checkbox"/> NO
<b>FLIGHT INSPECTOR REMARKS:</b> Flown satisfactory to gold standard.						
<b>IN-FLIGHT OBSTACLE REPORT</b>						
<b>OBSTRUCTION ID #:</b>	<b>COORDINATES OR LOCATION:</b>	<b>GNSS ALTITUDE (MSL):</b>	<b>BAROMETRIC ALTITUDE (MSL):</b>	<b>HEIGHT ABOVE GROUND LEVEL:</b>		

WAAS CH <b>42823</b> <b>W18A</b>	APP CRS <b>180°</b>	Rwy Idg TDZE <b>6242</b> Apt Elev <b>6260</b>
--	------------------------	---

# RNAV (GPS) RWY 18

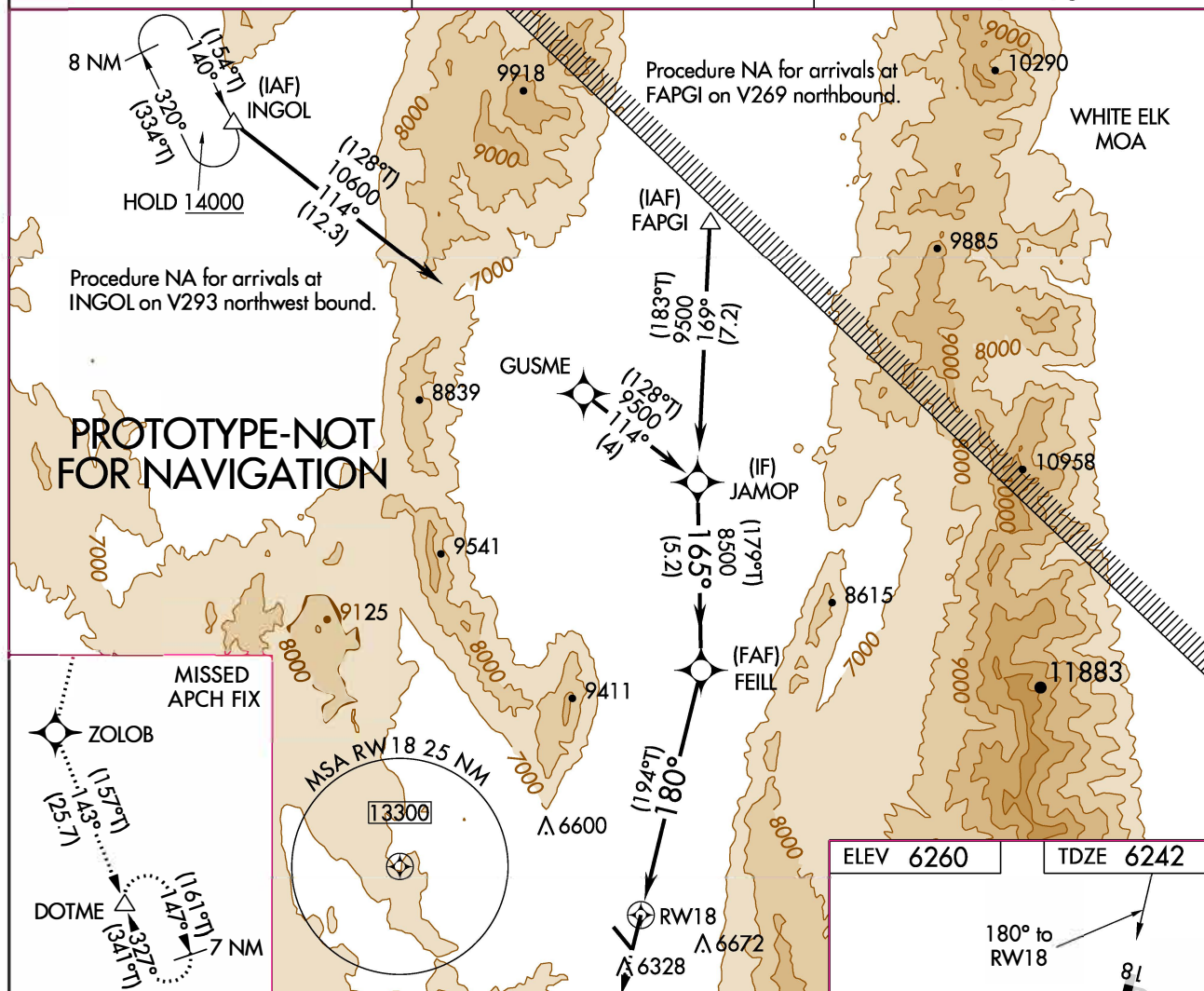
## ELY AIRPORT-YELLAND FIELD (ELY)

RNP APCH.

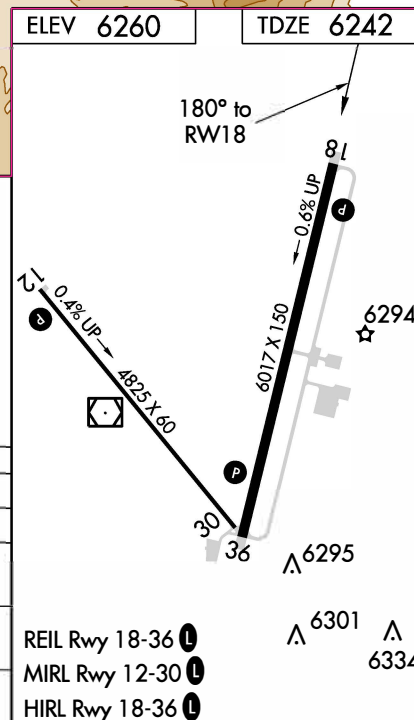
**T** Baro-VNAV NA. Circling Rwy 30 NA at night. Circling NA for Cats C and D southwest of Rwy 12 and east of Rwy 18. Circling NA for Cats A and B southwest of Rwy 12 and west of Rwy 36.

**MISSED APPROACH:** Climb to 12000 direct ZOLOB and on track 143° to DOTME and hold.

ASOS <b>120.625</b>	SALT LAKE CENTER <b>133.45 317.625</b>	UNICOM <b>122.8 (CTAF) 0</b>
------------------------	---	---------------------------------



12000	ZOLOB	tr 143°	DOTME	JAMOP
* LNAV only		* 2.7 NM to RWY 18		
				FEILL 8500
				8500
				9500
				GP 3.00° TCH 50
				2.7 NM 4.3 NM 5.2 NM
CATEGORY	A	B	C	D
LPV DA		6652-1½	410 (400-1½)	
LNAV/VNAV DA		7274-4	1032 (1100-4)	
LNAV MDA	7140-1 898 (900-1)	7140-1¼ 898 (900-1¼)	7140-2½	898 (900-2½)
<b>C</b> CIRCLING	7140-1¼	880 (900-1¼)	7140-2½ 880 (900-2½)	8220-3 1960 (2000-3)



ELY, NEVADA

AL-5163 (FAA)

20030

WAAS CH <b>42823</b> <b>W18A</b>	APP CRS <b>180°</b>	Rwy Idg <b>6017</b> TDZE <b>6242</b> Apt Elev <b>6259</b>
--	------------------------	---

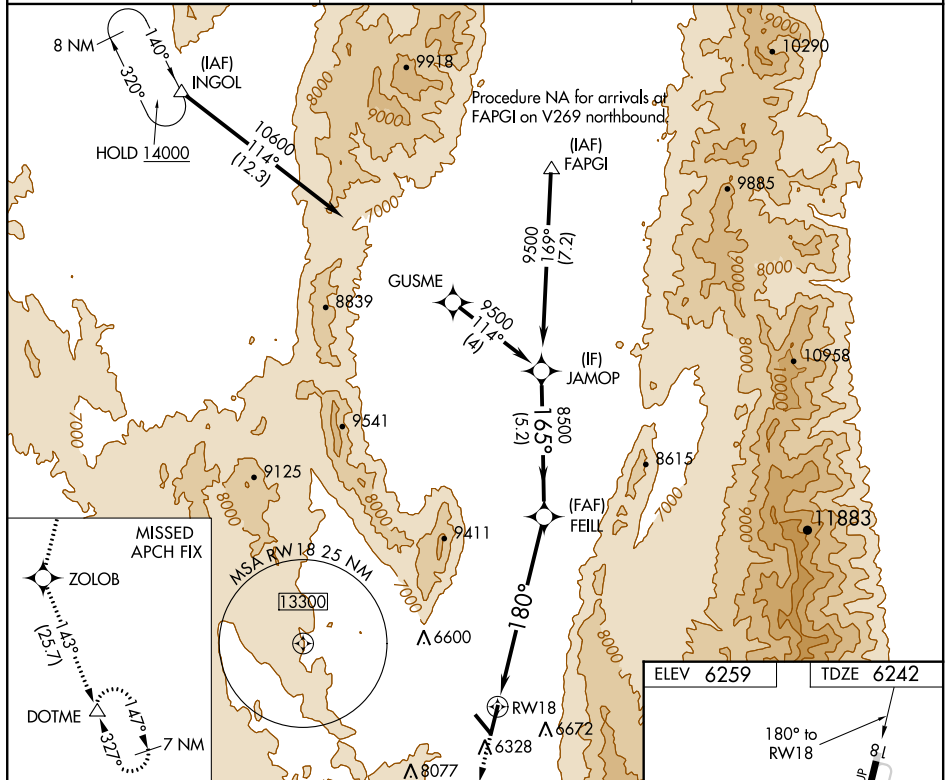
**OLD**

## RNAV (GPS) RWY 18

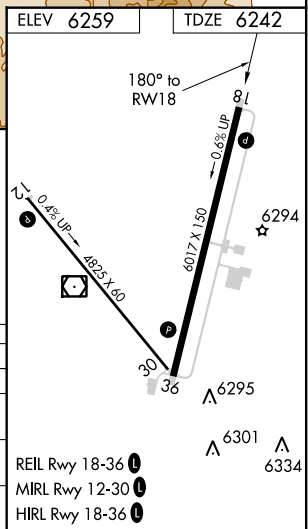
ELY AIRPORT-YELLAND FIELD (ELY)

  -31 °C	Baro-VNAV NA. Circling NA southwest of Rwy 12 and 36. DME/DME RNP-0.3 NA.	MISSED APPROACH: Climb to 12000 direct ZOLOB and on track 143° to DOTME and hold.
---	---	--

ASOS <b>120.625</b>	SALT LAKE CENTER <b>133.45 317.625</b>	UNICOM <b>122.8 (CTAF) 0</b>
------------------------	---	---------------------------------



12000 ↑	ZOLOB ✱	hdg 143°	DOTME △		JAMOP			
* LNAV only		* 2.2 NM to RW18			GP 3.00° TCH 50			
CATEGORY		A		B		C		D
LPV	DA	6652-1 <sup>3</sup> / <sub>8</sub> 410 (400-1 <sup>3</sup> / <sub>8</sub> )						
LNAV/ VNAV	DA	7205-4 963 (1000-4)						
LNAV MDA		6980-1 738 (800-1)	6980-1 <sup>1</sup> / <sub>4</sub> 738 (800-1 <sup>1</sup> / <sub>4</sub> )	6980-2		738 (800-2)		
CIRCLING		6980-1 721 (800-1)	6980-1 <sup>1</sup> / <sub>4</sub> 721 (800-1 <sup>1</sup> / <sub>4</sub> )	6980-2 721 (800-2)		7240-3 981 (1000-3)		



ELY, NEVADA

Amdt 1A 29MAY14

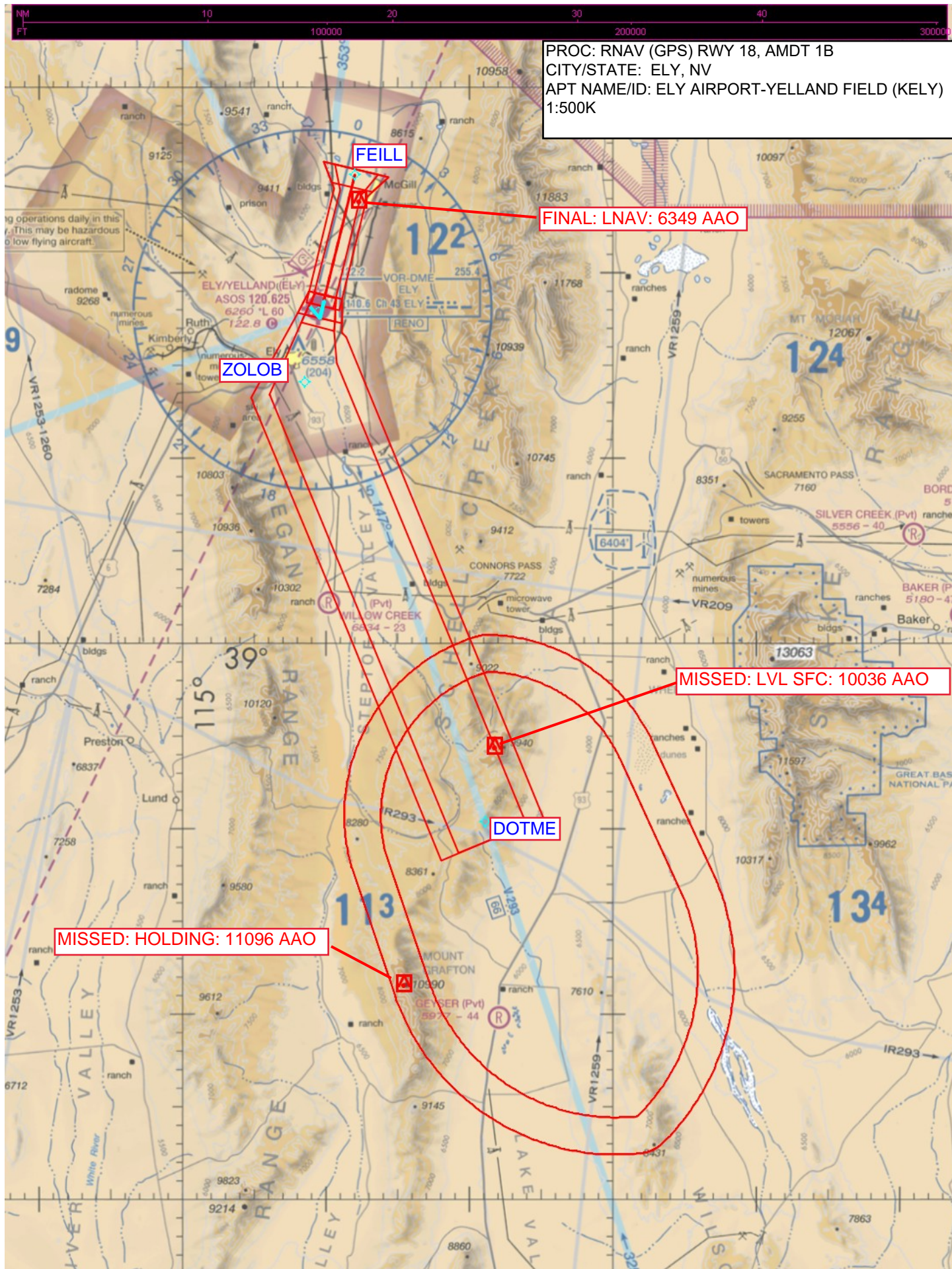
39°18'N-114°51'W

ELY AIRPORT-YELLAND FIELD (ELY)

## RNAV (GPS) RWY 18

SW-4, 10 SEP 2020 to 08 OCT 2020





PROC: RNAV (GPS) RWY 18, AMDT 1B  
CITY/STATE: ELY, NV  
APT NAME/ID: ELY AIRPORT-YELLAND FIELD (KELY)  
1:500K

FEILL

FINAL: LNAV: 6349 AAO

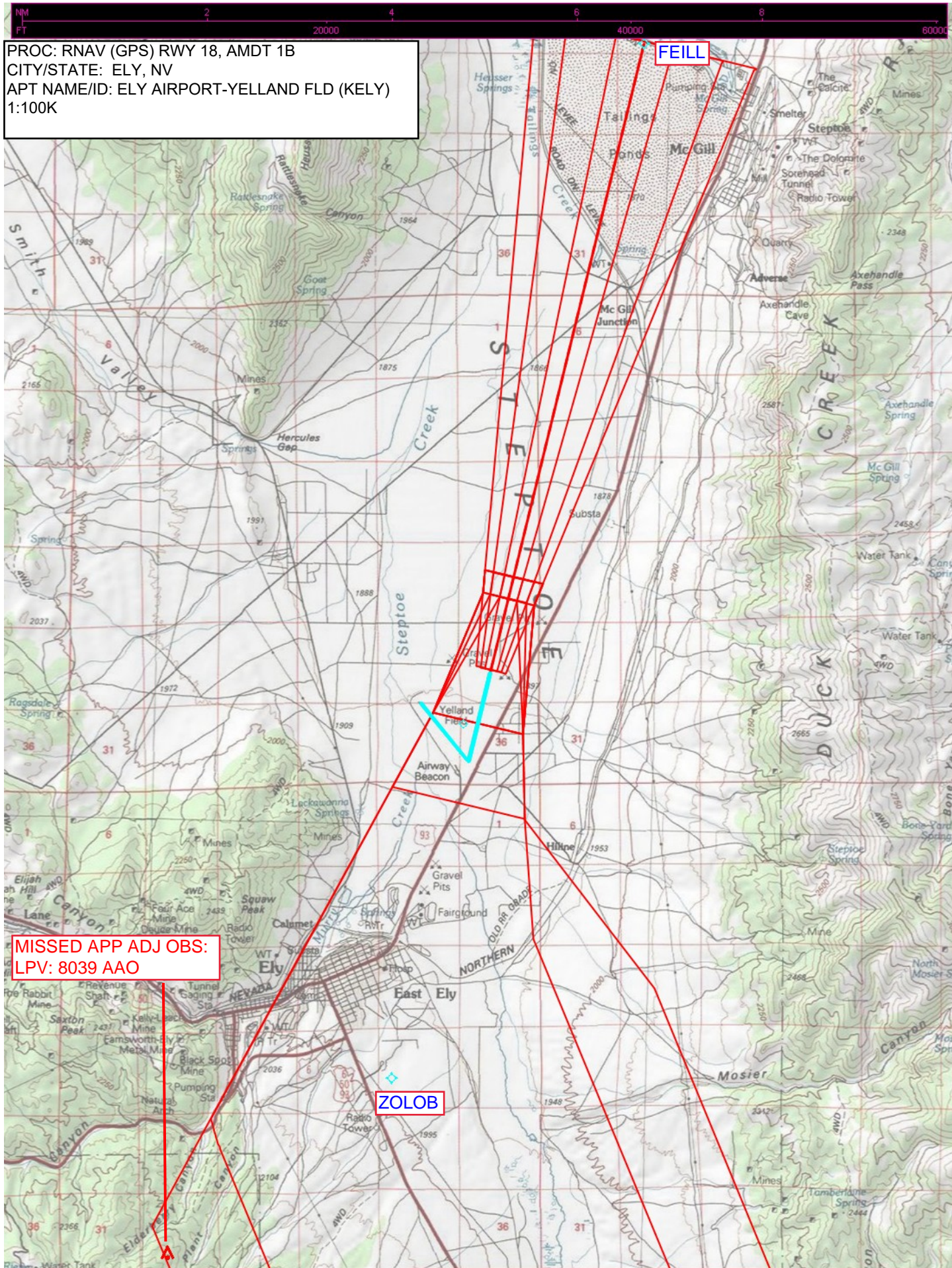
ZOLOB

MISSED: LVL SFC: 10036 AAO

DOTME

MISSED: HOLDING: 11096 AAO

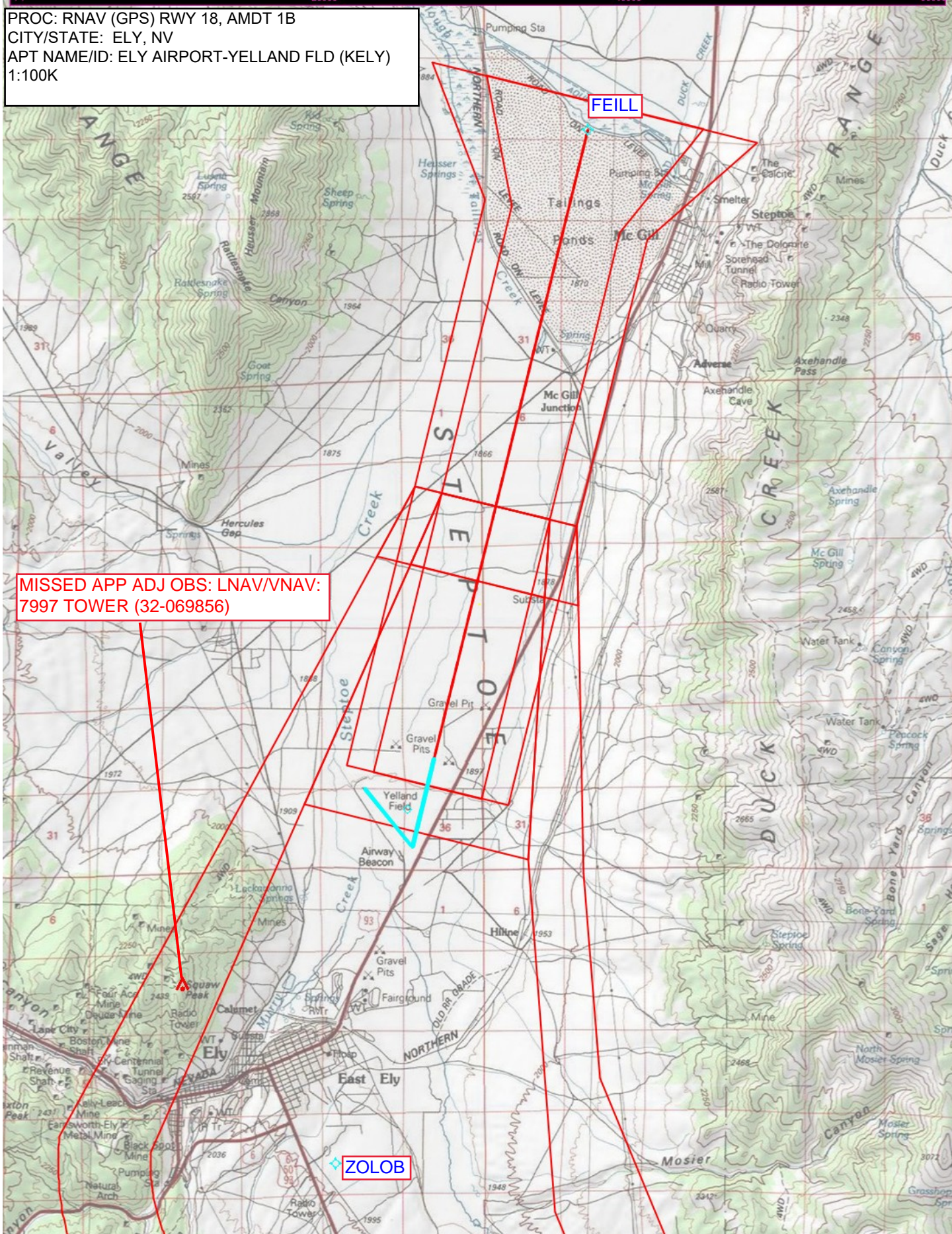






NM  
FT 2 4 6 8 20000 40000 60000

PROC: RNAV (GPS) RWY 18, AMDT 1B  
CITY/STATE: ELY, NV  
APT NAME/ID: ELY AIRPORT-YELLAND FLD (KELY)  
1:100K





PROC: RNAV (GPS) RWY 18, AMDT 1B  
CITY/STATE: ELY, NV  
APT NAME/ID: ELY AIRPORT-YELLAND FIELD (KELY)  
1:100K

