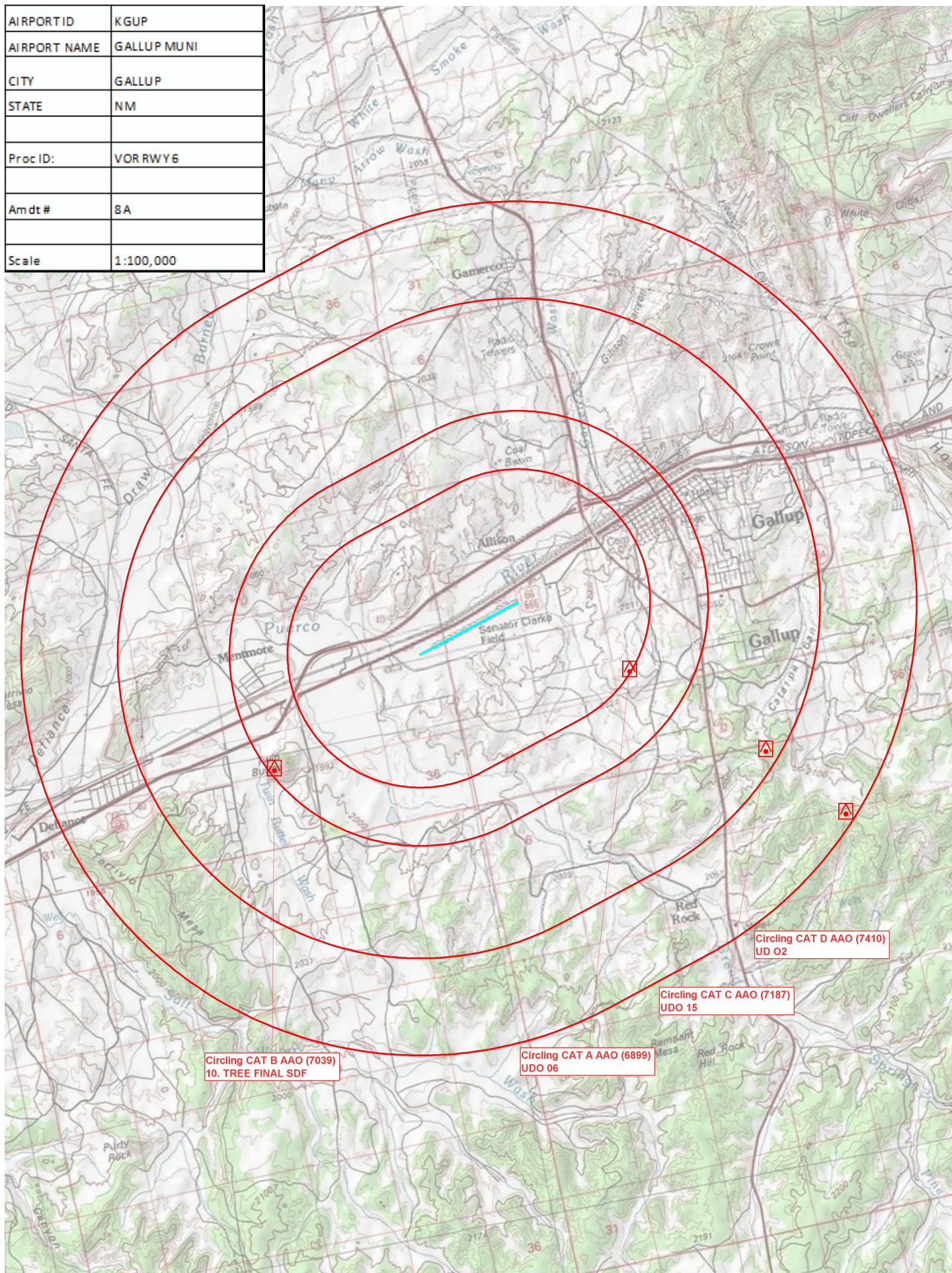


AIRPORT ID	KGUP
AIRPORT NAME	GALLUP MUNI
CITY	GALLUP
STATE	NM
Proc ID:	VOR RWY 6
Amdt #	8A
Scale	1:100,000





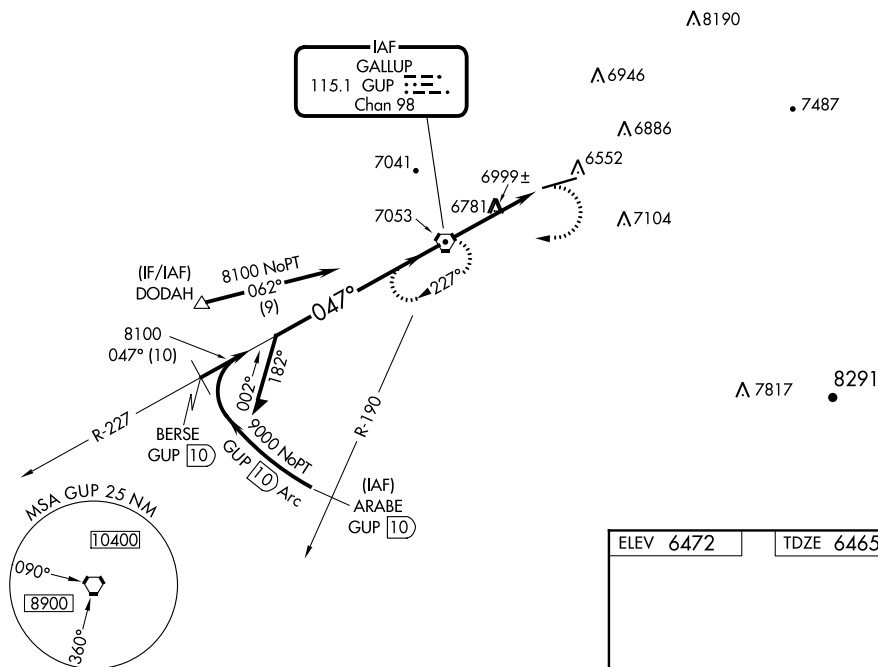
VORTAC GUP <b>115.1</b> Chan <b>98</b>	APP CRS <b>047°</b>	Rwy Idg TDZE Apt Elev	<b>7315</b> <b>6465</b> <b>6472</b>
--	------------------------	-----------------------------	---

VOR RWY 6  
GALLUP MUNI (GUP)

**T**  
**A** Rwy 6 helicopter visibility reduction below  $\frac{3}{4}$  SM NA.

**MISSED APPROACH:** Climbing right turn to 9000 direct GUP VORTAC and hold.

ASOS <b>118.375</b>	ALBUQUERQUE RADIO <b>122.1R</b>	UNICOM <b>122.95</b> (CTAF) <b>0</b>
------------------------	------------------------------------	---



VGSI and descent angles no  
(VGSI Angle 3.00/TCH 46).

GUP  
VORTAC

9000  


GUP

Remain  
within 10 NM

9000

221

8100

CH 45

GUP  
2.1

9000  


GUP

6520 

 $\Delta$ 

6501  
A. 

7315

6524

1

047° 4 NM  
from FAF

REIL Rwy 24 **L**  
MIRL Rwy 6-24

FAP	
Knots	60

Min:Sec	4:00
---------	------

24 L

AF to MAP 4 N		
90	120	

0	2:40	2:00
---	------	------

GALLUP, NEW MEXICO  
Amdt 8A 24MAY18

35°31'N-108°47'W

GALLUP MUNI (GUP)  
VOR RWY 6

SW-1, 24 MAY 2018 to 21 JUN 2018