



Flight Procedures Cover Page	Task Action: P-NOTAM	Task Type: IAP	Estimated Chart Date: 08/12/2021	APWS Task ID: E9921D758E77441E9C10CB8A9BB6F114	APWS Project ID: 9045A94422A54C5185EE99BDCE46E422
Procedure: APPROACH RNAV (GPS) RWY 7 AMDT 2A		Enroute: NO	Specialist: Marsh, Andre		Agreement Number:
Airport ID: KFMN		Airport City: FARMINGTON		State: NM	
Facility ID:	Facility Type:	Flight Inspection Remark Type:			
<p>Procedure Comments: P-NOTAM CIRCLING RADII INCREASE CONTACT JASON KRETSCHMER, AJV-A421, 405-954-4019</p> <p style="text-align: center;"><i>Digitally signed by</i> JASON KRETSCHMER Jun 14, 2021</p>					





WAAS CH 90110 W07A	APP CRS 076°	Rwy Idg 6248 TDZE 5502 Apt Elev 5506
---------------------------------	------------------------	---

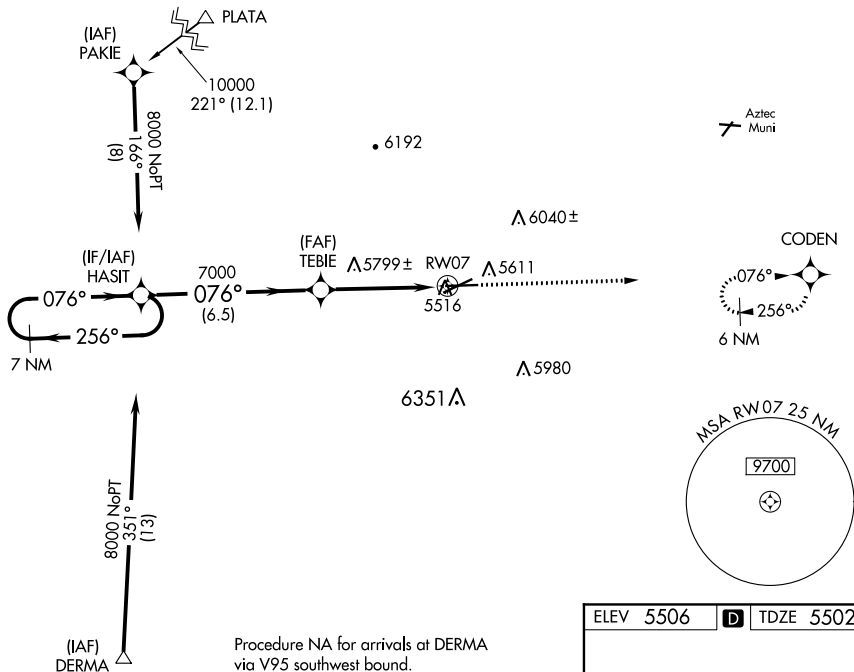


RNAV (GPS) RWY 7

T Cat D Circling not authorized southeast of Rwy 5 and 25.
A Baro-VNAV NA below -26°C (-14°F). DME/DME RNP-0.3 NA.
 If local altimeter setting not received, use Durango-La Plata County, CO
 altimeter setting and increase all DAs/MDAs 260 feet.

MISSED APPROACH: Climb to 8300 direct CODEN and hold.

ATIS 127.15	DENVER CENTER 118.575 348.7	FARMINGTON TOWER★ 118.9 (CTAF) 0 257.8	GND CON 121.7	UNICOM 122.95
----------------	--------------------------------	---	------------------	------------------



Procedure NA for arrivals at DERMA
via V95 southwest bound.

7 NM Holding Pattern

HASIT

8000

256°

076°

GP 3.00° TCH 52

7000

TEBIE

† VDP and Baro/VNAV NA when using Durango-La Plata County, CO altimeter setting.

† *1.7 NM to RW07

RW07

* LNAV only

8300

CODEN

CATEGORY	A	B	C	D
LPV DA	5760-1 258 (300-1)			
LNAV/ VNAV DA	5980-1¾ 478 (500-1¾)			
LNAV MDA	6060-1	558 (600-1)	6060-1½ 558 (600-1½)	6060-1¾ 558 (600-1¾)
CIRCLING	6060-1¾ 554 (600-1¾)	6120-1¾ 614 (700-1¾)	6160-1¾ 654 (700-1¾)	6160-2 654 (700-2)

SW-1, 20 MAY 2021 to 17 JUN 2021

