

<b>Flight Procedure Tracking Form</b>		<b>Action:</b> AMENDMENT	<b>Task Type:</b> IAP	<b>Date Open:</b> 10/15/2019	<b>Task #:</b> 2019101531127801001	<b>Request #:</b> 20191015311278
<b>Procedure:</b> VOR/DME-B AMDT 1A			<b>Airport ID:</b> KHDN	<b>Airport:</b> YAMPA VALLEY		<b>Reimbursable #:</b> NO
<b>City:</b> HAYDEN	<b>ST:</b> CO	<b>GPS #:</b>	<b>Estimated Chart Date:</b> 04/23/2020		<b>FICO #:</b>	
<b>Fac ID:</b> CHE		<b>Fac. Type:</b> VOR_DME			<b>Specialist:</b> STEVEN DOUGHERTY	
<b>Procedure Review</b>						
	<b>Rec'd</b>	<b>Rel'd</b>	<b>Full Name</b>	<b>Comments</b>		
<b>Lead:</b>	10/15/2019					
<b>QA:</b>						
<b>Liaison:</b>						
<b>Procedure Comments:</b> ENROUTE-NON <b>Remark Type:</b> INFORMATION  PROCESSED IAW AIRCRAFT OPERATIONS GROUP (AJW-33) MEMO, OCTOBER 3, 2018, SUBJECT: FLIGHT INSPECTION REVIEW NOT REQUIRED.  P-NOTAM.  CIRCLING ICON.  ACTIVE DATA USED.  CONTACT DAVID DANNER, AJV-A421, 405-954-5077.						



OLD

AL-5983 (FAA)

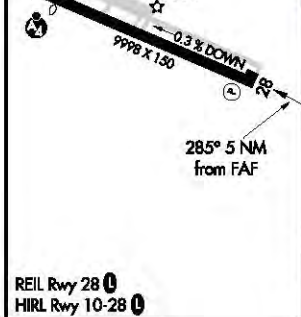
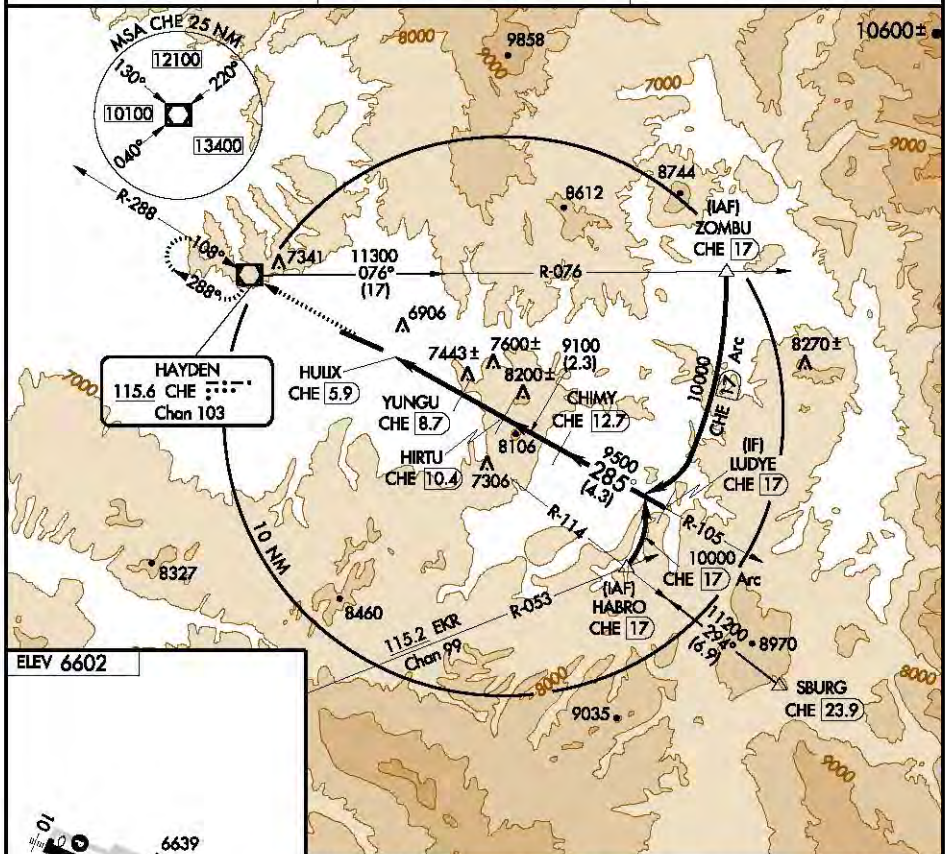
HAYDEN, COLORADO

VOR/DME CHE 115.6 Chan 103	APP CRS 285°	Rwy Idg TDZE Apt Elev 6602	N/A N/A 6602
----------------------------------	-----------------	-------------------------------------	--------------------

VOR/DME-B  
HAYDEN/YAMPA VALLEY (HDN)

<p>⚠ If local altimeter setting not received, use Craig-Moffat altimeter setting and increase all MDAs 100 feet. Visibility reduction by helicopters NA.</p>	<p>MISSED APPROACH: Climb to 9200 direct CHE VOR/DME and hold.</p>
--	--

<p>AWOS-3 119.275</p>	<p>DENVER CENTER 120.475 235.975</p>	<p>UNICOM 123.0 (CTAF) 0</p>
---------------------------	--	----------------------------------



9200	CHE 115.6	VGSI and descent angles not coincident.	CHIMY CHE 12.7	LUDYE CHE 17
HULX CHE 5.9	YUNGU CHE 8.7	HIRTU CHE 10.4	CHIMY CHE 12.7	LUDYE CHE 17
8500	9100	9500	10000	Procedure Turn NA
0.5	2.8 NM	1.7 NM	2.3 NM	4.3 NM
CATEGORY	A	B	C	D
CIRCLING	7900-1¼ 1298 (1300-1¼)	7900-1½ 1298 (1300-1½)	7900-3	1298 (1300-3)

HAYDEN, COLORADO  
Amdt 1 09183

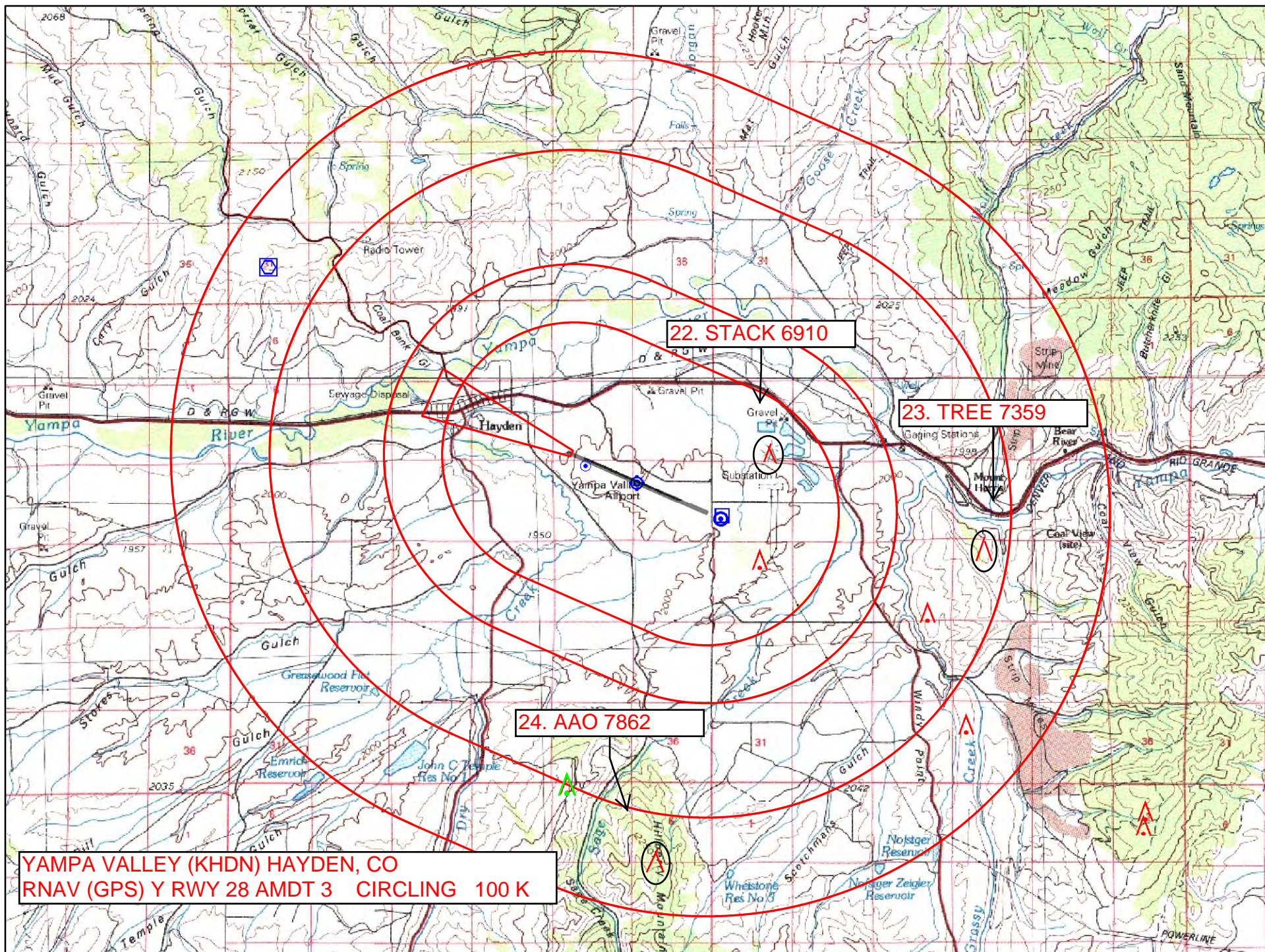
40°29'N-107°13'W

HAYDEN/YAMPA VALLEY (HDN)  
VOR/DME-B

SW-1, 05 APR 2012 to 03 MAY 2012

SW-1, 05 APR 2012 to 03 MAY 2012





22. STACK 6910

23. TREE 7359

24. AAO 7862

YAMPA VALLEY (KHDN) HAYDEN, CO  
RNAV (GPS) Y RWY 28 AMDT 3 CIRCLING 100 K