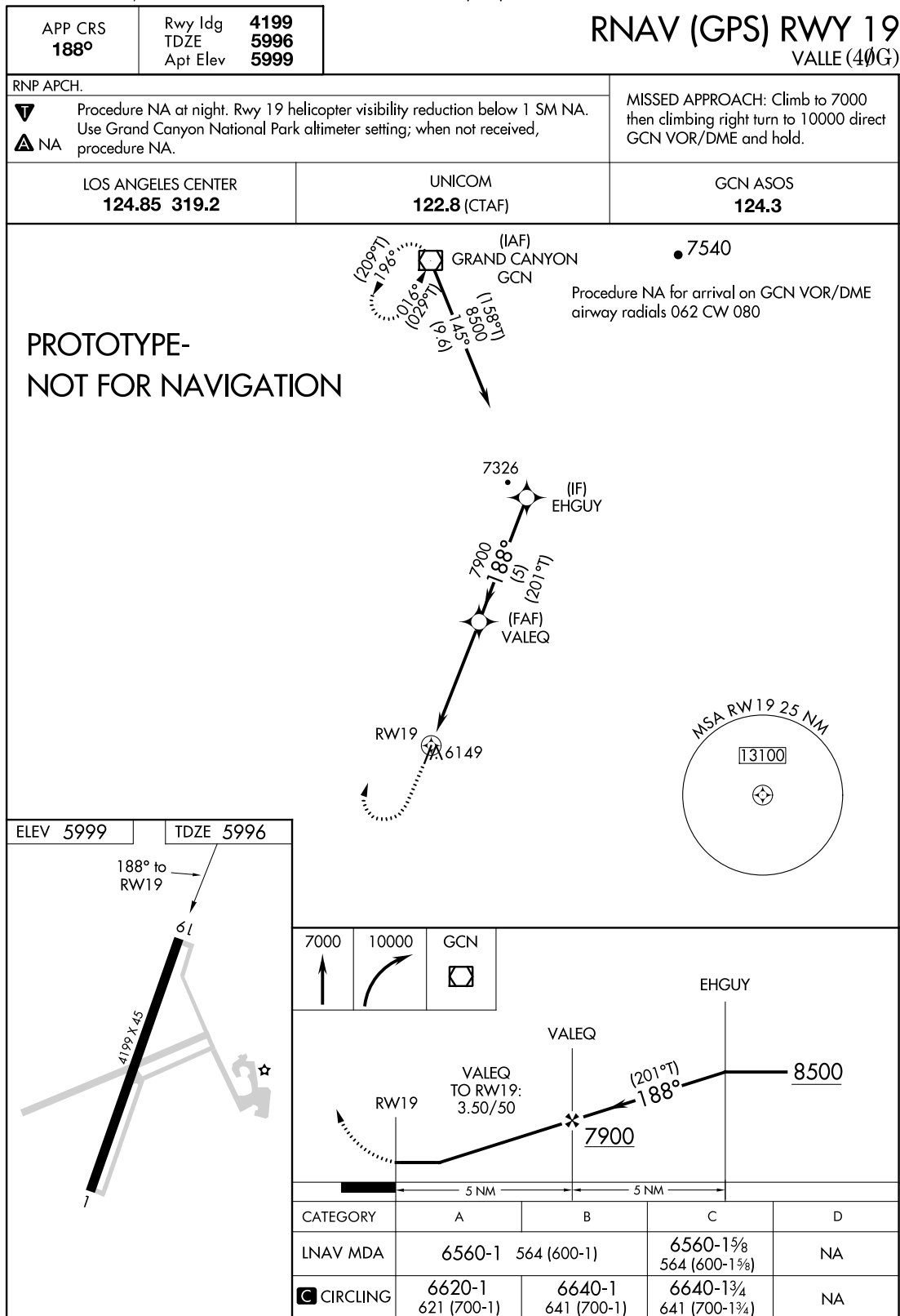


Flight Procedures Cover Page	Task Action: FLIGHT CHECK	Task Type: IAP	Estimated Chart Date: 02/25/2021	APWS Task ID: 34D78319F7DA4F429EECAB134ABE2A8A	APWS Project ID: C79389F0E9054887A9D8A5F9ABE7E05C
Procedure: RNAV (GPS) RWY 19 AMDT 0C		Enroute: NO	Specialist: Carlson, Kelly		Agreement Number:
Airport ID: 40G	Airport Name: VALLE		Airport City: GRAND CANYON		State: AZ
Facility ID:	Facility Type:	Flight Inspection Remark Type: New FC Slot			
<div>Procedure Comments: ABBREVIATED AMENDMENT COMPLETED UTILIZING PENDING DATA (11/5/2020) INCORPORATED FDC NOTAMS 8/9773 AND 0/7507 NEW FINAL CONTROLLING OBSTACLE: 6181 AAO 354300N/1120615W PROCESSED IAW AIRCRAFT OPERATIONS GROUP (AJF-1000) MEMO, DATED JUNE 4, 2020, SUBJECT: FLIGHT INSPECTION OF NEW CONTROLLING OBSTACLES CONTACT WARDELL HENNING 405-954-9954</div> <div><div>QUALITY 41 CHECKED</div><div>QUALITY 10 CHECKED</div></div>					

GRAND CANYON, ARIZONA

AL-9240 (FAA)

FIG



AUTOMATED AL-9240 RNAV (GPS) RWY 19

SW-4

10/28/2020

COMPILER: PD

REVIEWER:

DBL CHKR:

EFF: FIG

GRAND CANYON, ARIZONA

Orig-C FIG

35°39'N-112°09'W

VALLE (40G)

RNAV (GPS) RWY 19

APP CRS 188°	Rwy Idg TDZE Apt Elev	4199 5996 6002
------------------------	-----------------------------	---

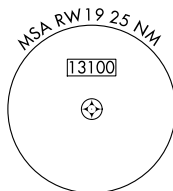
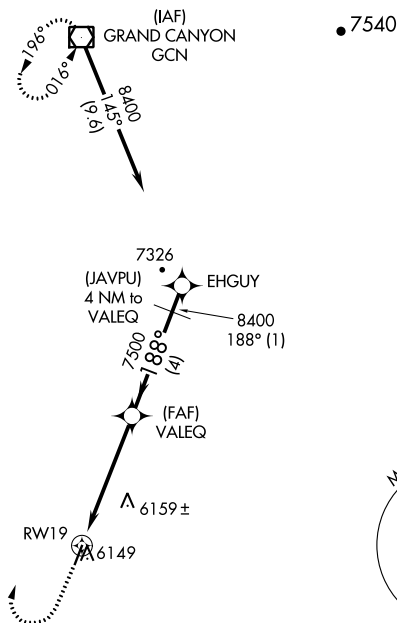
GPS RWY 19
VALLE (40G)

T	Obtain local altimeter setting on CTAF; when not received use Grand Canyon
NA	National Park altimeter setting. When neither received procedure not authorized. Procedure NA at night.

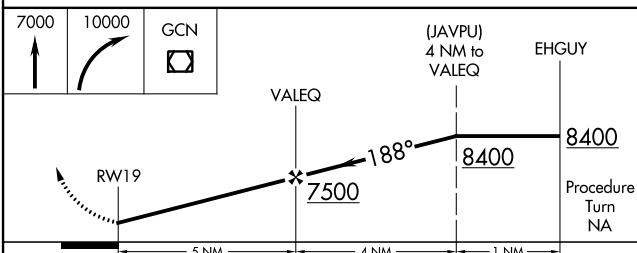
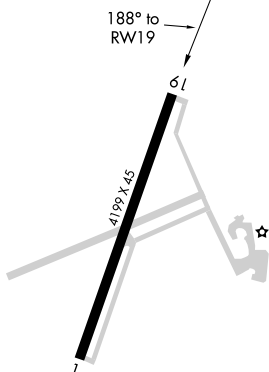
MISSED APPROACH: Climb to 7000 then climbing right turn to 10000 direct GCN VOR/DME and hold.

LOS ANGELES CENTER
124.85 319.2

UNICOM
122.8 (CTAF)



ELEV 6002		TDZE 5996
-----------	--	-----------



CATEGORY	A	B	C	D
S-19	6420-1 424 (500-1)		6420-1¼ 424 (500-1¼)	NA
CIRCLING	6480-1 478 (500-1)		6500-1½ 498 (500-1½)	NA
GRAND CANYON NATIONAL PARK ALTIMETER SETTING MINIMUMS				
S-19	6540-1 544 (600-1)		6540-1½ 544 (600-1½)	NA
CIRCLING	6620-1 618 (700-1)		6640-1¾ 638 (700-1¾)	NA

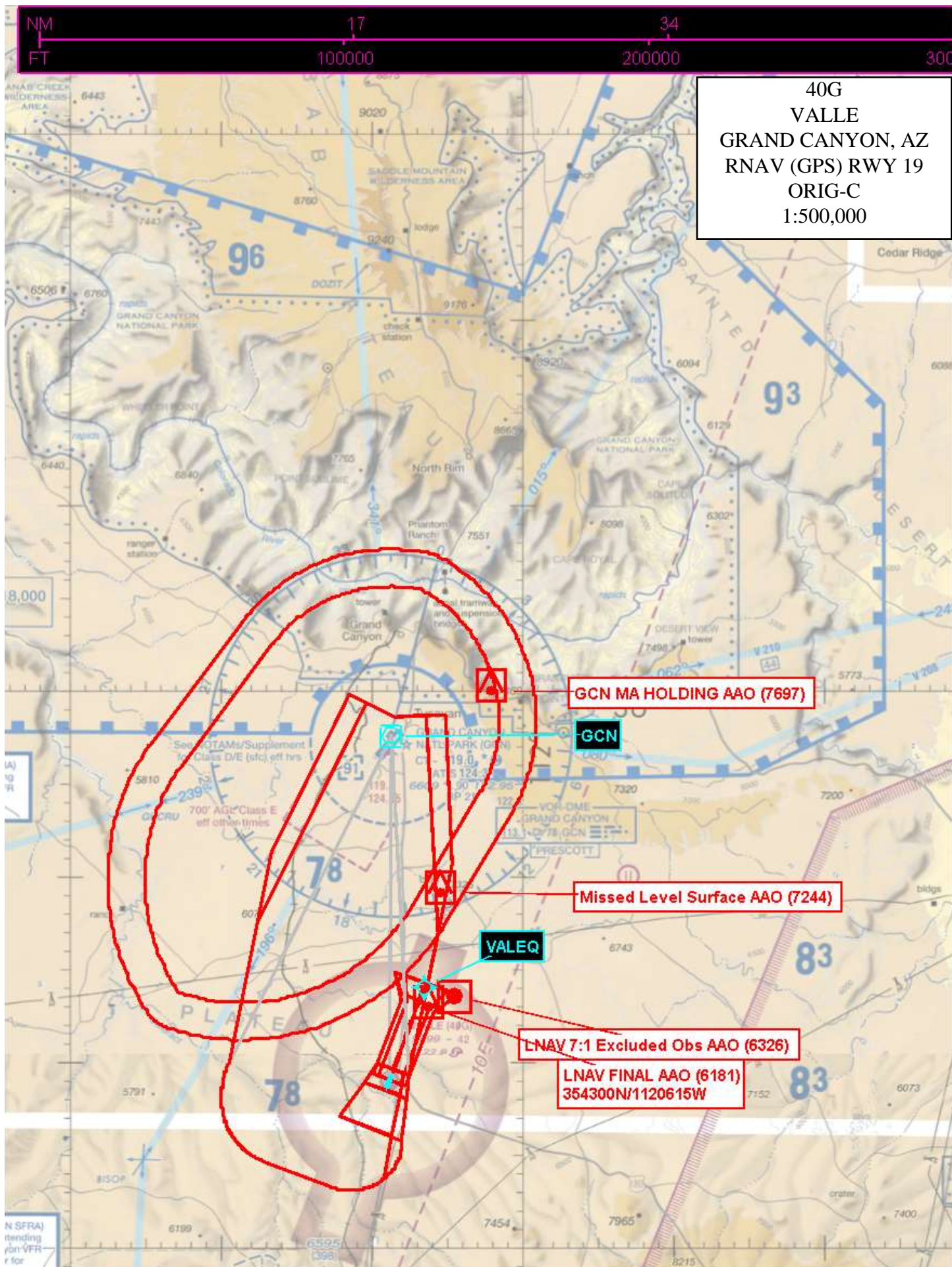
GRAND CANYON, ARIZONA
Orig-B 19JUL18

35°39'N-112°09'W

GPS RWY 19

SW-4, 13 AUG 2020 to 10 SEP 2020

SW-4, 13 AUG 2020 to 10 SEP 2020



40G
VALLE
GRAND CANYON, AZ
RNAV (GPS) RWY 19
ORIG-C
1:500,000

GCN MA HOLDING AAO (7697)

GCN

Missed Level Surface AAO (7244)

VALEQ

LNAV 7:1 Excluded Obs AAO (6326)

LNAV FINAL AAO (6181)
354300N/1120615W

