

NDB VVV  
**332**

APP CR  
355°

Rwy Idg	<b>3417</b>
TDZE	<b>1097</b>
Apt Elev	<b>1101</b>

NDB RWY 34

ORTONVILLE MUNI-MARTINSON FIELD (VVV)

**TANA**

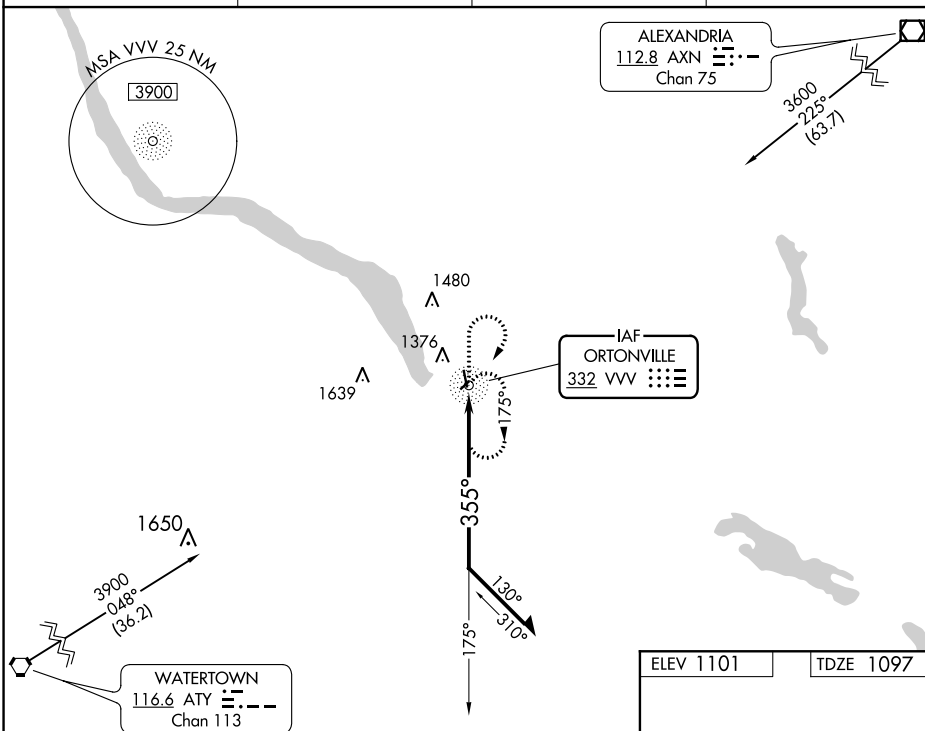
**MISSED APPROACH:** Climb to 3600 then right turn direct VVV NDB and hold.

AWOS-3  
119.225

MINNEAPOLIS CENTER  
128.5 306.2

GCO  
121.725

UNICOM  
122.8 (CTAF) **L**



Remain within 10 NM

3200

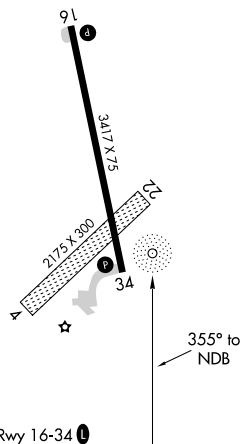
175°

355°

3600  
↑



\* Maintain 3600 or above until established outbound on procedure turn.



CATEGORY	A	B	C	D
S-34	1660-1	563 (600-1)	1660-1½ 563 (600-1½)	NA
CIRCLING	1740-1	639 (700-1)	1740-1¾ 639 (700-1¾)	NA



