



<b>Flight Procedure Tracking Form</b>		<b>Action:</b> AMENDMENT	<b>Task Type:</b> IAP	<b>Date Open:</b> 10/07/2019	<b>Task #:</b> 2019100736024401001	<b>Request #:</b> 20191007360244
<b>Procedure:</b> ILS OR LOC RWY 27 AMDT 1C			<b>Airport ID:</b> KMEZ	<b>Airport:</b> MENA INTERMOUNTAIN MUNI		<b>Reimbursable #:</b> NO
<b>City:</b> MENA	<b>ST:</b> AR	<b>GPS #:</b>	<b>Estimated Chart Date:</b> 01/30/2020			<b>FICO #:</b>
<b>Fac ID:</b> VMU		<b>Fac. Type:</b> ILS			<b>Specialist:</b> RUSSELL ROSLEWSKI	
<b>Procedure Review</b>						
	<b>Rec'd</b>	<b>Rel'd</b>	<b>Full Name</b>	<b>Comments</b>		
<b>Lead:</b>	10/07/2019					
<b>QA:</b>						
<b>Liaison:</b>						
<b>Procedure Comments:</b> ENROUTE-NON <b>Remark Type:</b> INFORMATION						
P-NOTAM <div style="text-align: right;">P-NOTAM DOES NOT AFFECT CODING</div> 						
NEW CIRCLING AREAS BASED ON KMEZ RNAV (GPS) RWY 17, AMDT 1, TO BE PUBLISHED 12/5/19						
PROCESSED IAW AIRCRAFT OPERATIONS GROUP (AJW-33) MEMO, OCTOBER 3, 2018, SUBJECT: FLIGHT INSPECTION REVIEW NOT REQUIRED.						
DAVE DANNER, 405-954-5077						

OLD

MENA, ARKANSAS

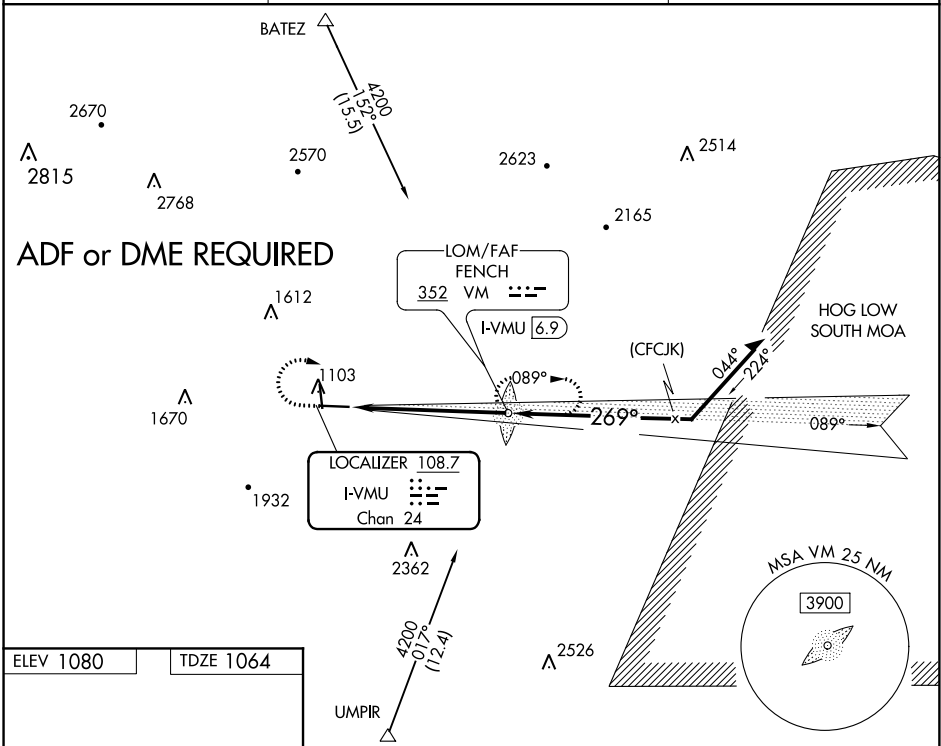
19059

LOC/DME I-VMU <b>108.7</b> Chan <b>24</b>	APP CRS <b>269°</b>	Rwy Idg TDZE Apt Elev <b>6001</b> <b>1064</b> <b>1080</b>
---	------------------------	--

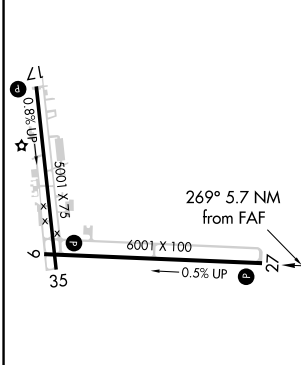
ILS or LOC RWY 27  
MENA INTERMOUNTAIN MUNI (MEZ)

NA Circling to Rwy 17, 35 NA at night. ADF Required.	MISSED APPROACH: Climb to 1700 then climbing right turn to 3600 direct FENCH LOM/I-VMU 6.9 DME and hold.
--	---

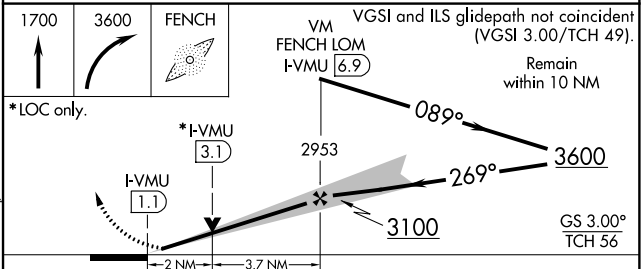
AWOS-3 <b>118.025</b>	MEMPHIS CENTER <b>126.1 269.0</b>	UNICOM <b>122.8 (CTAF) 0</b>
--------------------------	--------------------------------------	---------------------------------



ELEV 1080	TDZE 1064
-----------	-----------



MIRL Rwy 9-27 and 17-35 0
REIL Rws 9, 27 and 35 0
FAF to MAP 5.7 NM
Knots 60 90 120 150 180
Min:Sec 5:42 3:48 2:51 2:17 1:54



CATEGORY	A	B	C	D
S-ILS 27	1464-1½	400 (400-1½)		NA
S-LOC 27	1660-1	596 (600-1)	1660-1⅞ 596 (600-1⅞)	NA
CIRCLING	1880-1 800 (800-1)	1940-1¼ 860 (900-1¼)	2060-3 980 (1000-3)	NA

MENA, ARKANSAS  
Amdt 1B 12OCT17

34°33'N-94°12'W

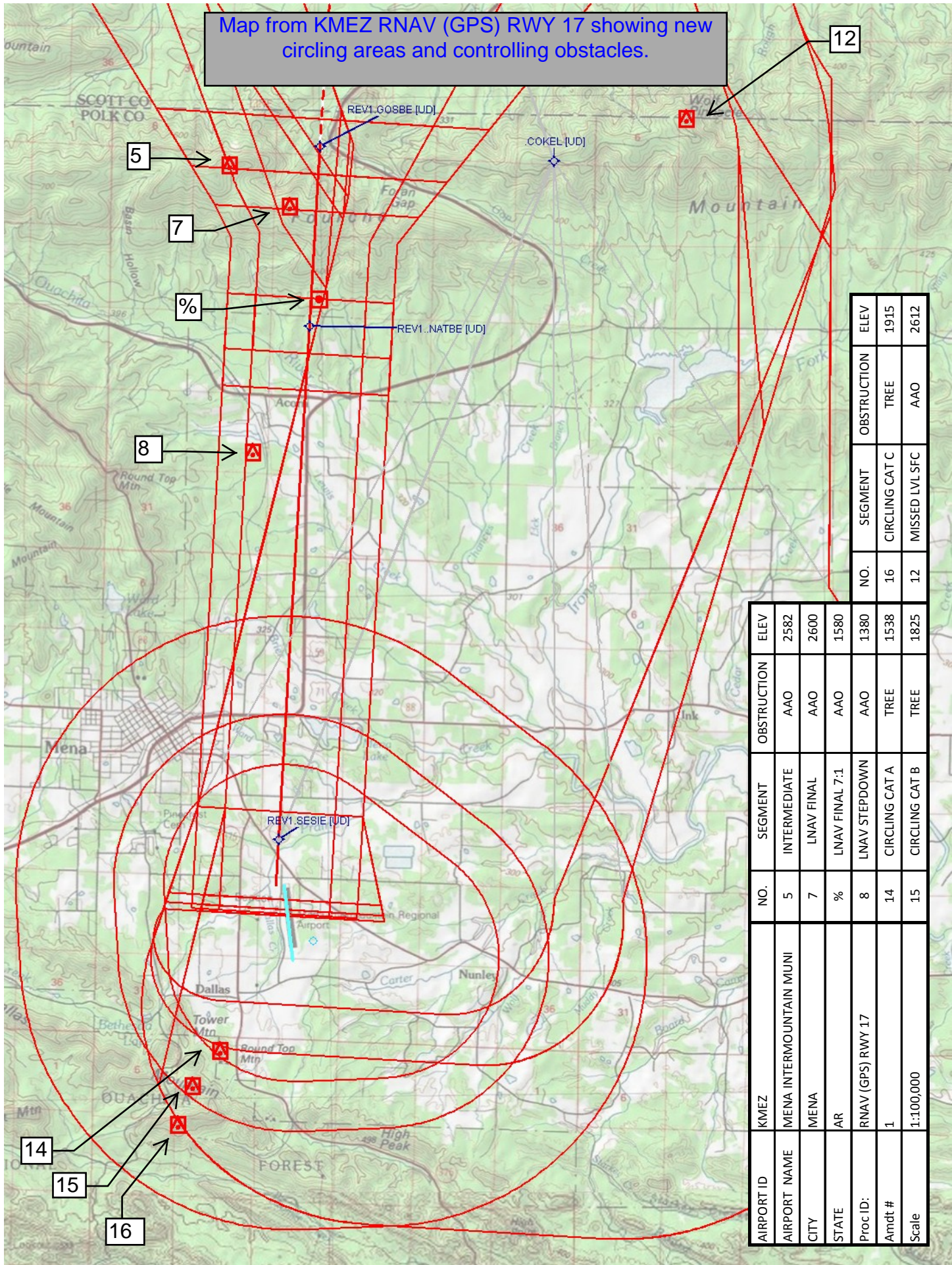
MENA INTERMOUNTAIN MUNI (MEZ)  
ILS or LOC RWY 27

SC-1, 12 SEP 2019 to 10 OCT 2019

SC-1, 12 SEP 2019 to 10 OCT 2019



Map from KMEZ RNAV (GPS) RWY 17 showing new circling areas and controlling obstacles.



NO.	SEGMENT	CIRCLING CAT C	MISSSED LVL SFC	OBSTRUCTION	ELEV
16				TREE	1915
12				AAO	2612

AIRPORT ID	KMEZ	NO.	SEGMENT	OBSTRUCTION	ELEV
AIRPORT NAME	MENA INTERMOUNTAIN MUNI	5	INTERMEDIATE	AAO	2582
CITY	MENA	7	LNAV FINAL	AAO	2600
STATE	AR	%	LNAV FINAL 7:1	AAO	1580
Proc ID:	RNAV (GPS) RWY 17	8	LNAV STEPDOWN	AAO	1380
Amdt #	1	14	CIRCLING CAT A	TREE	1538
Scale	1:100,000	15	CIRCLING CAT B	TREE	1825