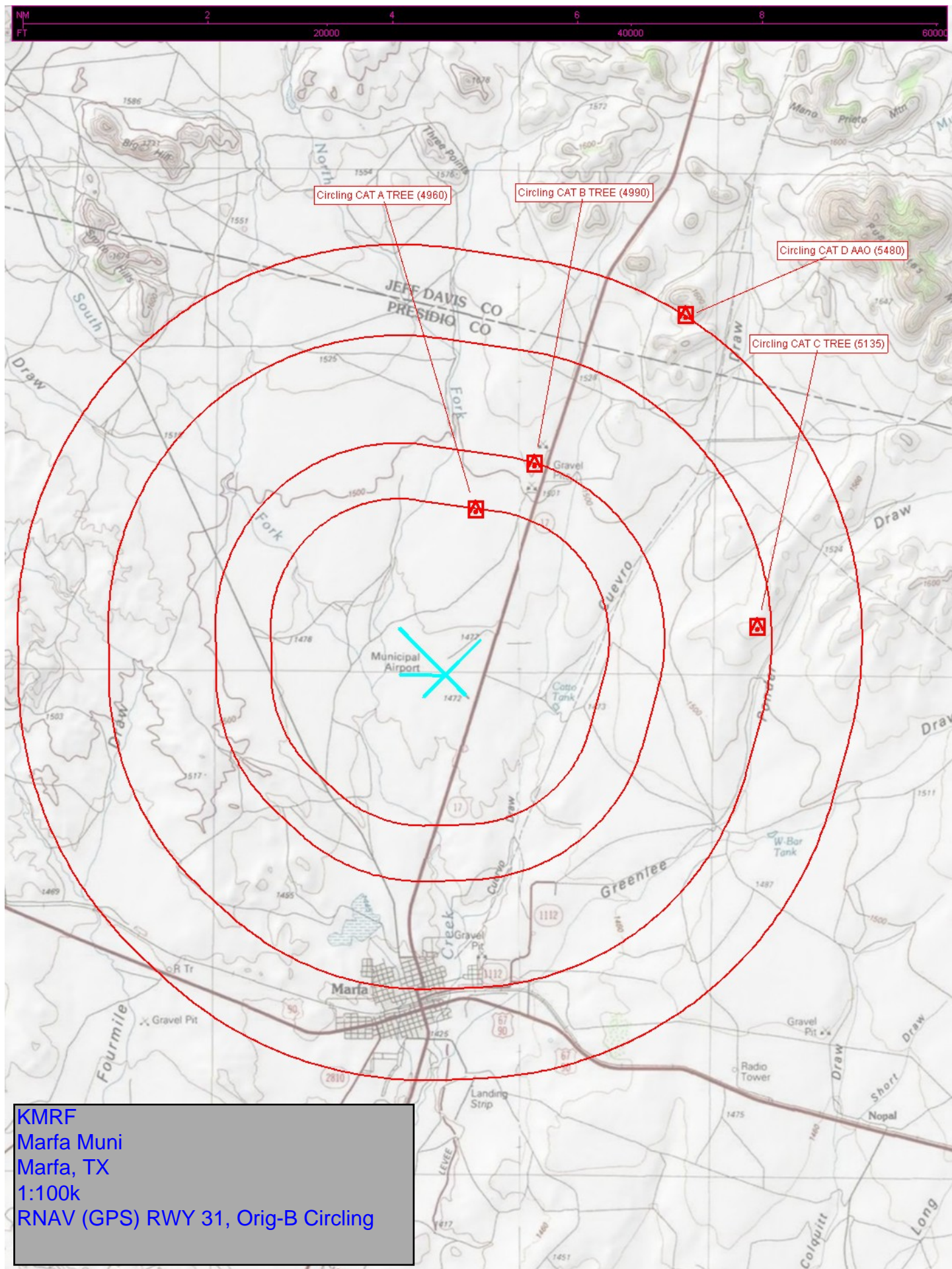


Flight Procedure Tracking Form		Action: AMENDMENT	Task Type: IAP	Date Open: 10/01/2019	Task #: 2019100130417501001	Request #: 20191001304175
Procedure: APPROACH RNAV (GPS) RWY 31 ORIG-B				Airport ID: KMRF	Airport: MARFA MUNI	Reimbursable #: NO
City: MARFA	ST: TX	GPS #:	Estimated Chart Date: 03/23/2023		FICO #:	
Fac ID: N/A		Fac. Type:			Specialist:	
Procedure Review						
	Rec'd	Rel'd	Full Name	Comments		
Lead:	10/01/2019					
QA:						
Liaison:						
Procedure Comments:			ENROUTE-NON	Remark Type: INFORMATION		
DAVID DANNER 405-954-5077						



MARFA, TEXAS

OLD

19171

APP CRS	Rwy Idg	6203
307°	TDZE	4840
	Apt Elev	4849

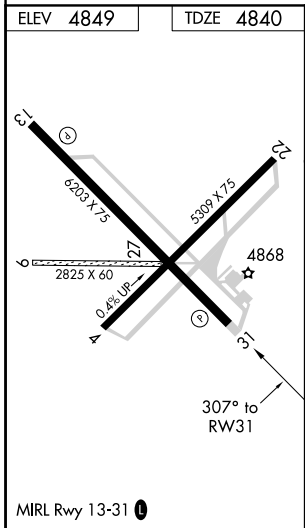
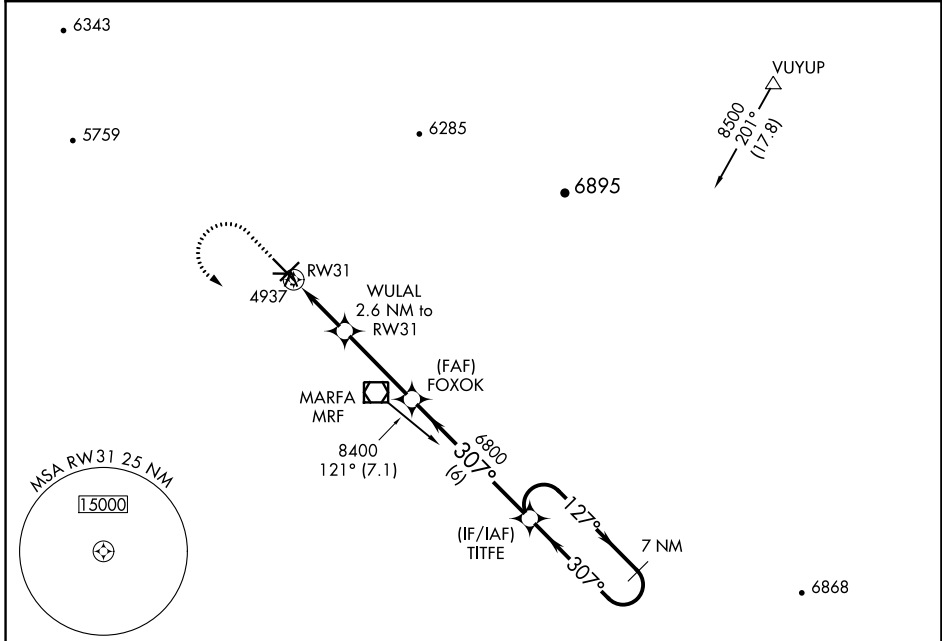
RNAV (GPS) RWY 31

MARFA MUNI (MRF)

When local altimeter setting not received, procedure NA.
DME/DME RNP-0.3 NA.
Visibility reduction by helicopters NA.

MISSED APPROACH: Climb to 5300 then climbing left turn to 9000 direct TITFE and hold, continue climb-in-hold to 9000.

AWOS-3PT 134.025	ALBUQUERQUE CENTER 135.875 292.15	UNICOM 122.8 (CTAF) 0
---------------------	--------------------------------------	--------------------------



5300	9000	TITFE	TITFE	7 NM Holding Pattern
↑	↶	✧	FOXOK	
			WULAL 2.6 NM to RW31	
			5700	
			6800	
			307°	
			127°	
			8400	
			VGSI and descent angles not coincident (VGSI Angle 3.00/ TCH 36).	
			2.6 NM	3.4 NM
			6 NM	
CATEGORY	A	B	C	D
LNAV MDA	5200-1	360 (400-1)		
CIRCLING	5280-1 431 (500-1)	5300-1 451 (500-1)	5300-1½ 451 (500-1½)	5400-2 551 (600-2)

MARFA, TEXAS
Orig-A 02APR15

30°22'N-104°01'W

MARFA MUNI (MRF)
RNAV (GPS) RWY 31

SC-3, 12 SEP 2019 to 10 OCT 2019

SC-3, 12 SEP 2019 to 10 OCT 2019