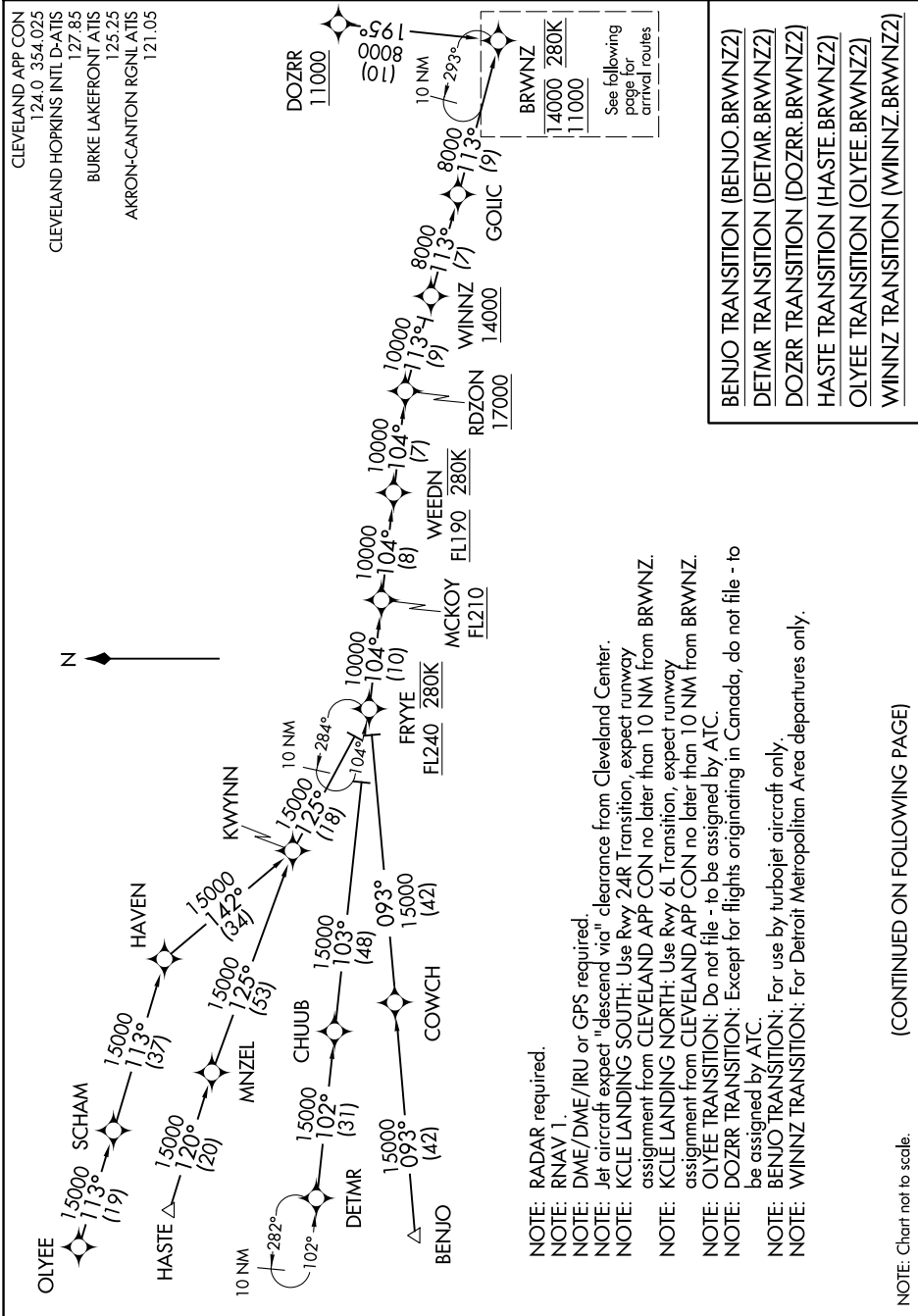


<b>Flight Procedure Tracking Form</b>		<b>Action:</b> AMENDMENT	<b>Task Type:</b> STAR	<b>Date Open:</b> 09/27/2019	<b>Task #:</b> 2019092730427401001	<b>Request #:</b> 20190927304274
<b>Procedure:</b> STAR BRWNZ (RNAV) THREE WILLOUGHBY OH KLNN			<b>Airport ID:</b> KLNN	<b>Airport:</b> WILLOUGHBY LOST NATION MUNI		<b>Reimbursable #:</b> NO
<b>City:</b> WILLOUGHBY	<b>ST:</b> OH	<b>GPS #:</b>	<b>Estimated Chart Date:</b> 03/26/2020			<b>FICO #:</b>
<b>Fac ID:</b> N/A		<b>Fac. Type:</b>			<b>Specialist:</b> JOSEPH ZEDER	
<b>Procedure Review</b>						
	<b>Rec'd</b>	<b>Rel'd</b>	<b>Full Name</b>	<b>Comments</b>		
<b>Lead:</b>	10/02/2019					
<b>QA:</b>			J ZEDER 11/06/2019 16			
<b>Liaison:</b>						
<b>Procedure Comments:</b>			ENROUTE	<b>Remark Type:</b> INFORMATION		
<p>POC: JACOB POWERS 405-954-8702</p> <p>FLIGHT INSPECTION REVIEW NOT REQUIRED - PROCESSED IAW AIRCRAFT OPERATIONS GROUP (AJW-333) MEMO, OCT 3, 2018</p> <p>KLNN NAME CHANGE FROM WILLOUGHBY LOST NATION MUNI TO LAKE COUNTY EXECUTIVE</p>						

BRWNZ TWO ARRIVAL (RNAV) Transition Routes

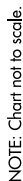
CLEVELAND, OHIO



BRWNZ TWO ARRIVAL (RNAV) Transition Routes

CLEVELAND, OHIO

## CLEVELAND, OHIO



EC-2, 10 OCT 2019 to 07 NOV 2019

## CLEVELAND, OHIO

(BRWNZ.BRWNZ2) 10OCT19

BRWNZ TWO ARRIVAL (RNAV)

CLEVELAND, OHIO

ARRIVAL ROUTE DESCRIPTION

LANDING KCLE RUNWAYS 6L/R: From BRWNZ on track 180° to cross MAAAK at or above 7000, then on track 181° to cross KLLAY between 6000 and 7000, then on track 182° to cross JIIMM between 5000 and 6000, then on track 182° to cross HICKR at 5000 and at 210K, then on heading 241° or as assigned by ATC. Expect ILS, RNAV (RNP), or RNAV (GPS) approach from HICKR, or RADAR vectors to final approach course.

LANDING KCLE RUNWAYS 24L/R: From BRWNZ on track 129° to cross TRRKY at or above 7000, then on track 130° to cross QUUBE between 6000 and 7000, then on track 130° to cross DEEKN between 5000 and 6000, then on track 130° to cross LLROY at 5000 and at 210K, then on heading 056° or as assigned by ATC. Expect ILS, RNAV (RNP), or RNAV (GPS) approach from LLROY, or RADAR vectors to final approach course.

LANDING KCLE RUNWAY 28: From BRWNZ on track 129° to cross TRRKY at or above 7000, then on track 149° to cross DYXON at 7000, then on track 145° to cross OZZYY at 7000 and at 210K, then on heading 101° or as assigned by ATC. Expect RADAR vectors to final approach course.

LANDING K1G3/KAKR: From BRWNZ on track 151° to cross USASN at 11000, then on track 100°. Expect RADAR vectors to final approach course.

LANDING KLPR/KLNN/KCGF/KBKL: From BRWNZ on track 105° to SLOTR, then on track 105° to cross SIIPE at 7000, then on track 105°. Expect RADAR vectors to final approach course.

LANDING KCAK: From BRWNZ on track 151° to cross USASN at 11000, then on track 120°. Expect RADAR vectors to final approach course.

EC-2, 10 OCT 2019 to 07 NOV 2019

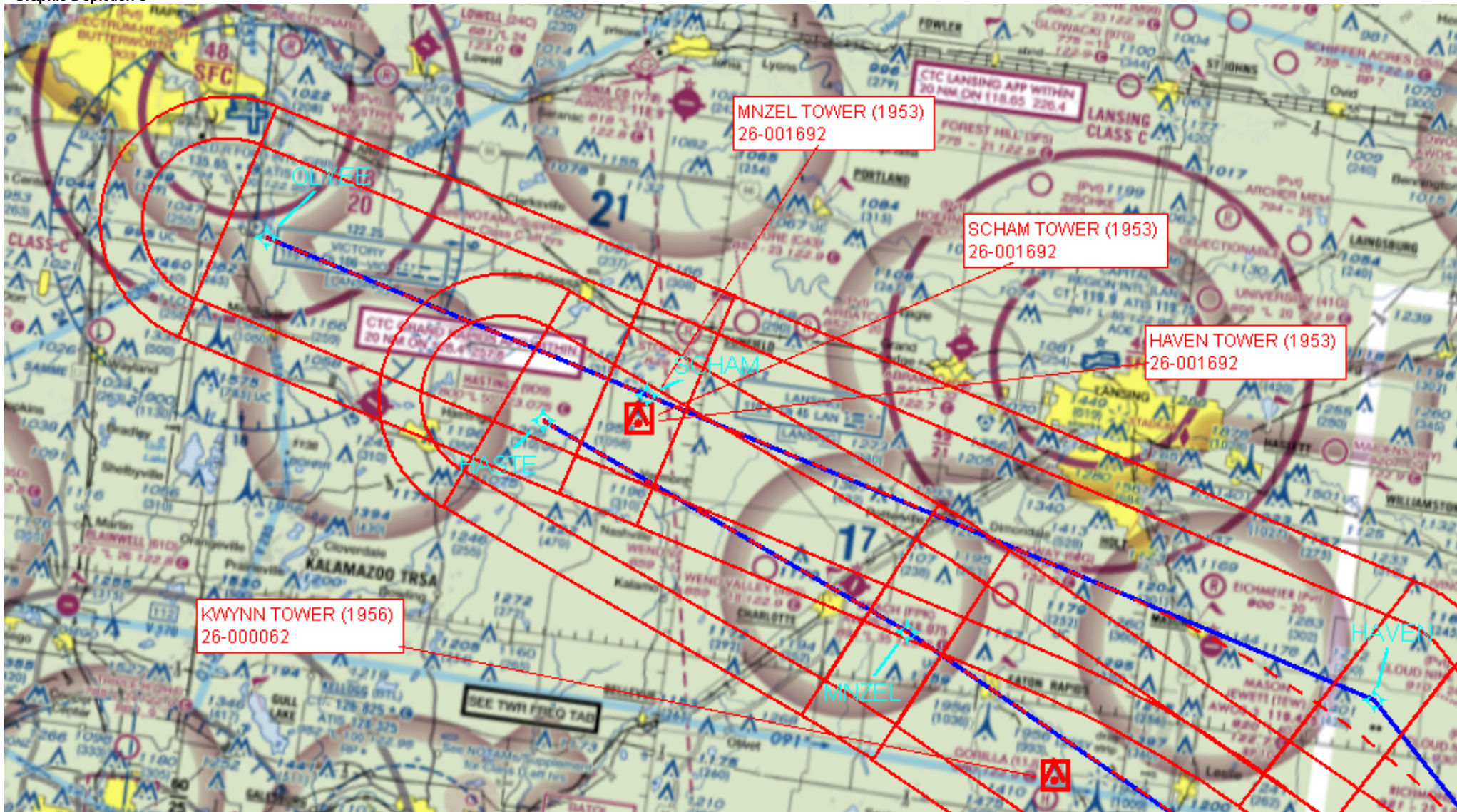
EC-2, 10 OCT 2019 to 07 NOV 2019



FEDERAL AVIATION ADMINISTRATION  
FLIGHT STANDARDS SERVICE  
STANDARD TERMINAL ARRIVAL (STAR)

Bearings, headings, courses, tracks and radials are magnetic. Elevations and altitudes are in feet, MSL. Altitudes are minimum altitudes unless otherwise indicated. Distances are in nautical miles (NM). Graphic depictions attached.

Arrival Name	Number	STAR Computer Code	Superseded Number	Dated	Effective Date
BRWNZ (RNAV)	THREE	BRWNZ.BRWNZ3	TWO	10/10/2019	
Graphic Depiction 3					

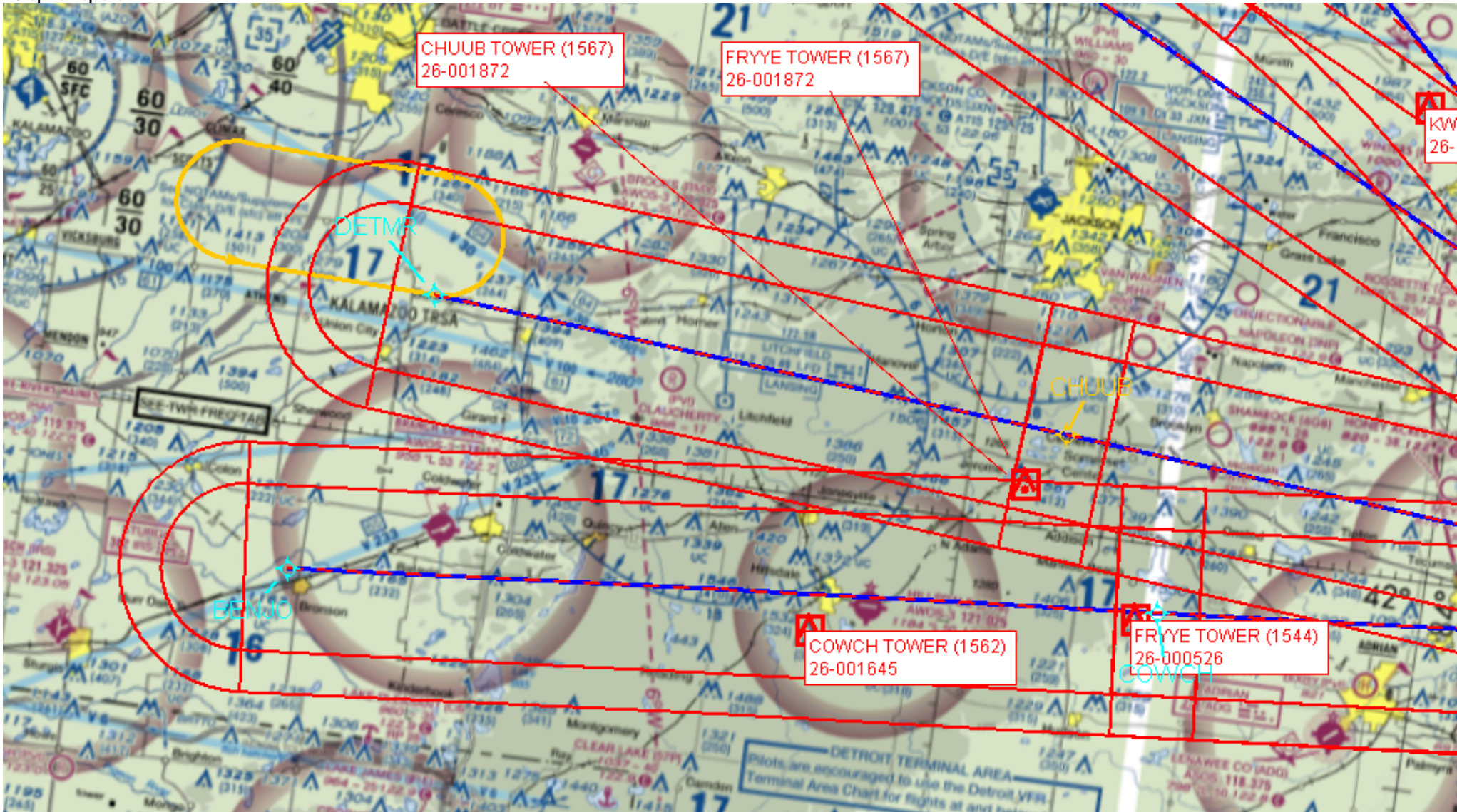




FEDERAL AVIATION ADMINISTRATION  
FLIGHT STANDARDS SERVICE  
STANDARD TERMINAL ARRIVAL (STAR)

Bearings, headings, courses, tracks and radials are magnetic. Elevations and altitudes are in feet, MSL. Altitudes are minimum altitudes unless otherwise indicated. Distances are in nautical miles (NM). Graphic depictions attached.

Arrival Name	Number	STAR Computer Code	Superseded Number	Dated	Effective Date
<b>BRWNZ (RNAV)</b>	<b>THREE</b>	<b>BRWNZ.BRWNZ3</b>	<b>TWO</b>	<b>10/10/2019</b>	
Graphic Depiction 4					



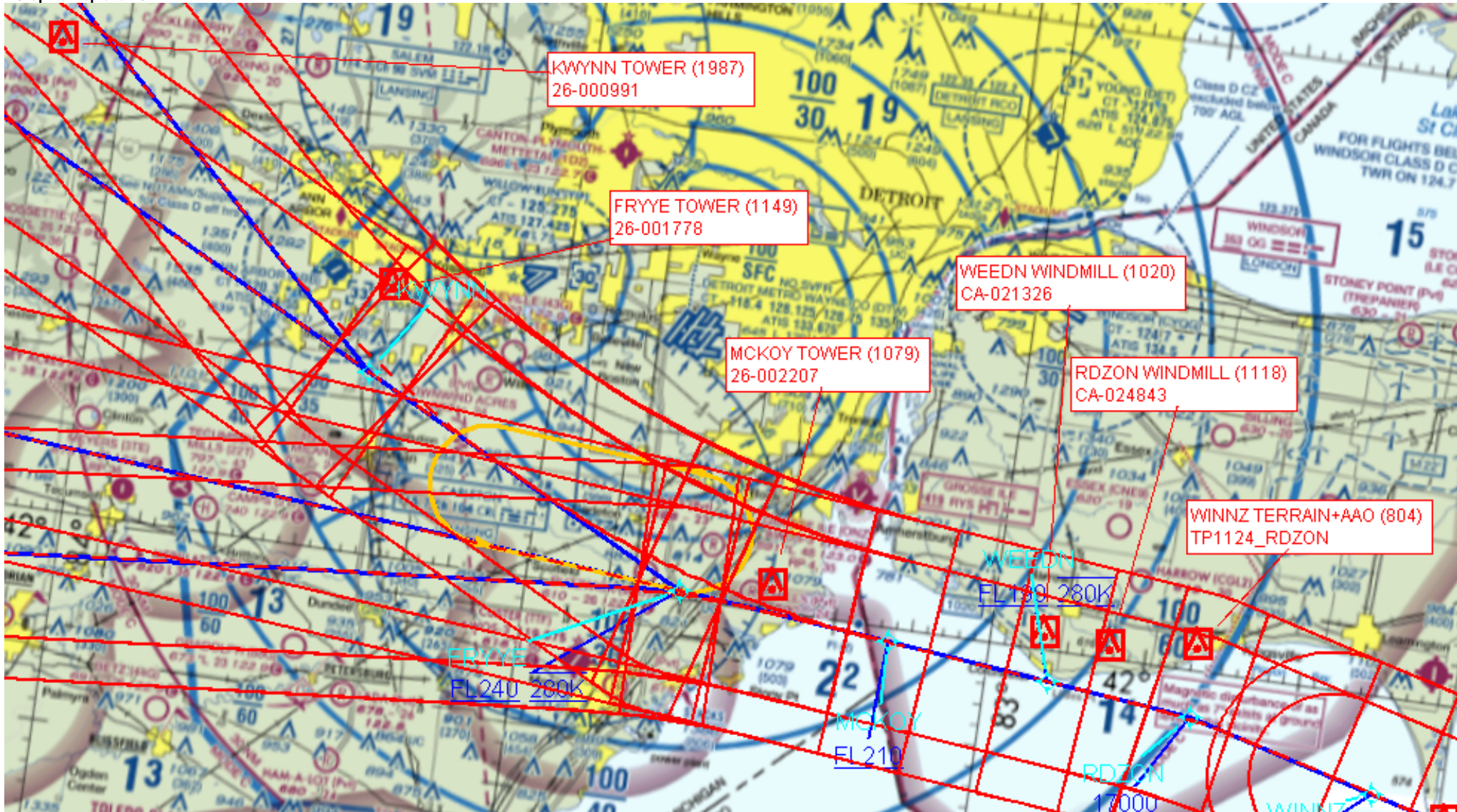


FEDERAL AVIATION ADMINISTRATION  
FLIGHT STANDARDS SERVICE  
STANDARD TERMINAL ARRIVAL (STAR)

Bearings, headings, courses, tracks and radials are magnetic. Elevations and altitudes are in feet, MSL. Altitudes are minimum altitudes unless otherwise indicated. Distances are in nautical miles (NM). Graphic depictions attached.

Arrival Name	Number	STAR Computer Code	Superseded Number	Dated	Effective Date
<b>BRWNZ (RNAV)</b>	<b>THREE</b>	<b>BRWNZ.BRWNZ3</b>	<b>TWO</b>	<b>10/10/2019</b>	

Graphic Depiction 5



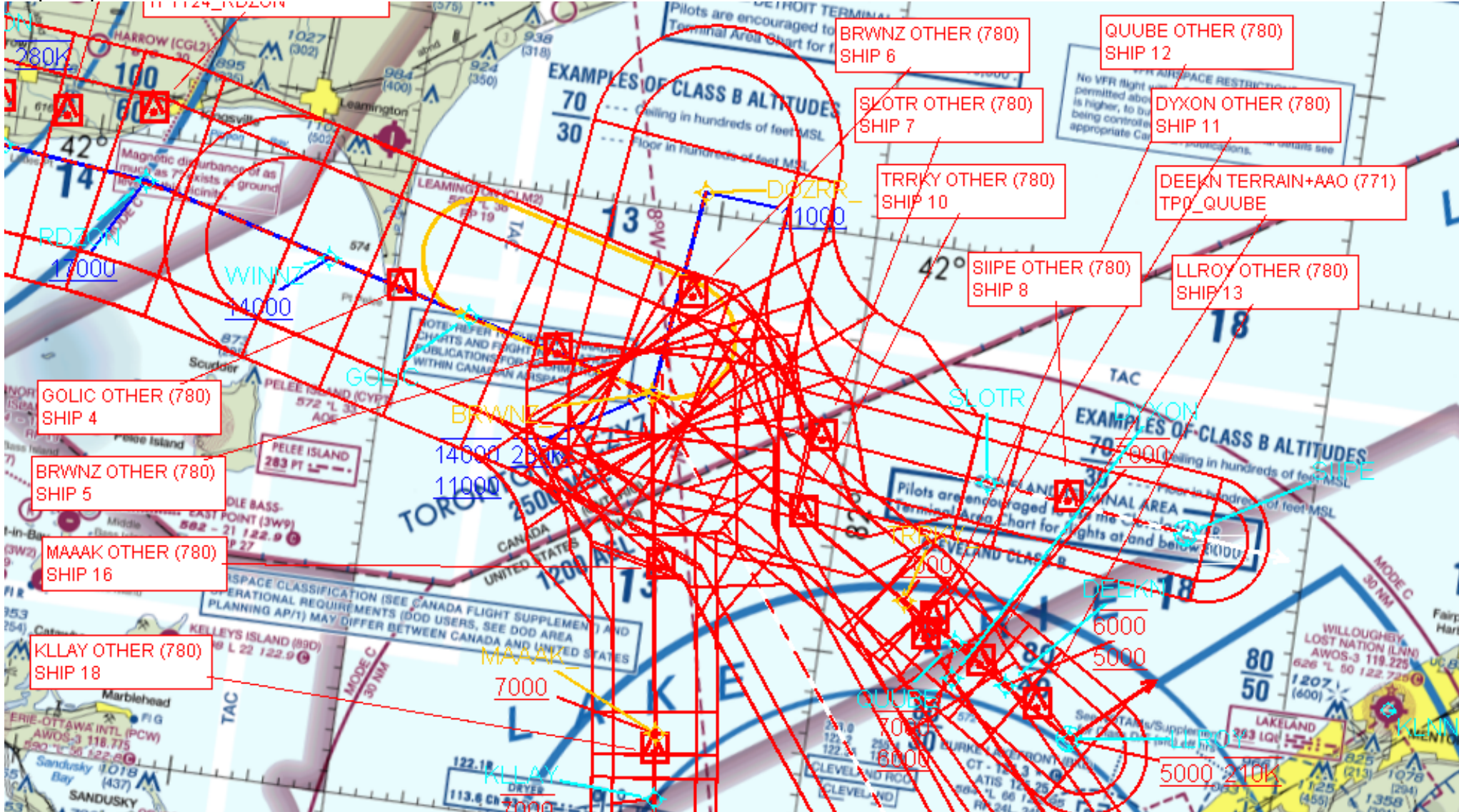


FEDERAL AVIATION ADMINISTRATION  
FLIGHT STANDARDS SERVICE  
STANDARD TERMINAL ARRIVAL (STAR)

Bearings, headings, courses, tracks and radials are magnetic. Elevations and altitudes are in feet, MSL. Altitudes are minimum altitudes unless otherwise indicated. Distances are in nautical miles (NM). Graphic depictions attached.

Arrival Name	Number	STAR Computer Code	Superseded Number	Dated	Effective Date
BRWNZ (RNAV)	THREE	BRWNZ.BRWNZ3	TWO	10/10/2019	

Graphic Depiction 6





FEDERAL AVIATION ADMINISTRATION  
FLIGHT STANDARDS SERVICE  
STANDARD TERMINAL ARRIVAL (STAR)

Bearings, headings, courses, tracks and radials are magnetic. Elevations and altitudes are in feet, MSL. Altitudes are minimum altitudes unless otherwise indicated. Distances are in nautical miles (NM). Graphic depictions attached.

Arrival Name	Number	STAR Computer Code	Superseded Number	Dated	Effective Date
BRWNZ (RNAV)	THREE	BRWNZ.BRWNZ3	TWO	10/10/2019	

Graphic Depiction 7

