


Flight Procedure Tracking Form		Action: AMENDMENT	Task Type: IAP	Date Open: 09/26/2019	Task #: 2019092630066701001	Request #: 20190926300667
Procedure: RNAV (RNP) X RWY 21L AMDT 1A			Airport ID: KDTW	Airport: DETROIT METROPOLITAN WAYNE COUNTY		Reimbursable #: NO
City: DETROIT	ST: MI	GPS #:	Estimated Chart Date: 12/05/2019		FICO #:	
Fac ID: N/A		Fac. Type:			Specialist: RUSSELL ROSLEWSKI	
Procedure Review						
	Rec'd	Rel'd	Full Name	Comments		
Lead:	09/26/2019			 Digitally signed by		
QA:				7 ROBERT G HAMILTON		
Liaison:				Sep 26, 2019		
Procedure Comments: ENROUTE-NON Remark Type: INFORMATION						
P-NOTAM PROCESSED IAW AIRCRAFT OPERATIONS GROUP (AJW-33) MEMO, OCTOBER 3, 2018, SUBJECT: FLIGHT INSPECTION REVIEW NOT REQUIRED. DAVE DANNER, 405-954-5077						

QUALITY
 15
 CHECKED

DETROIT, MICHIGAN

AL-119 (FAA)

19283

APP CRS	Rwy Idg	10001
216°	TDZE	632
	Apt Elev	645

RNAV (RNP) X RWY 21L DETROIT METROPOLITAN WAYNE COUNTY (DTW)

RNP AR APCH.

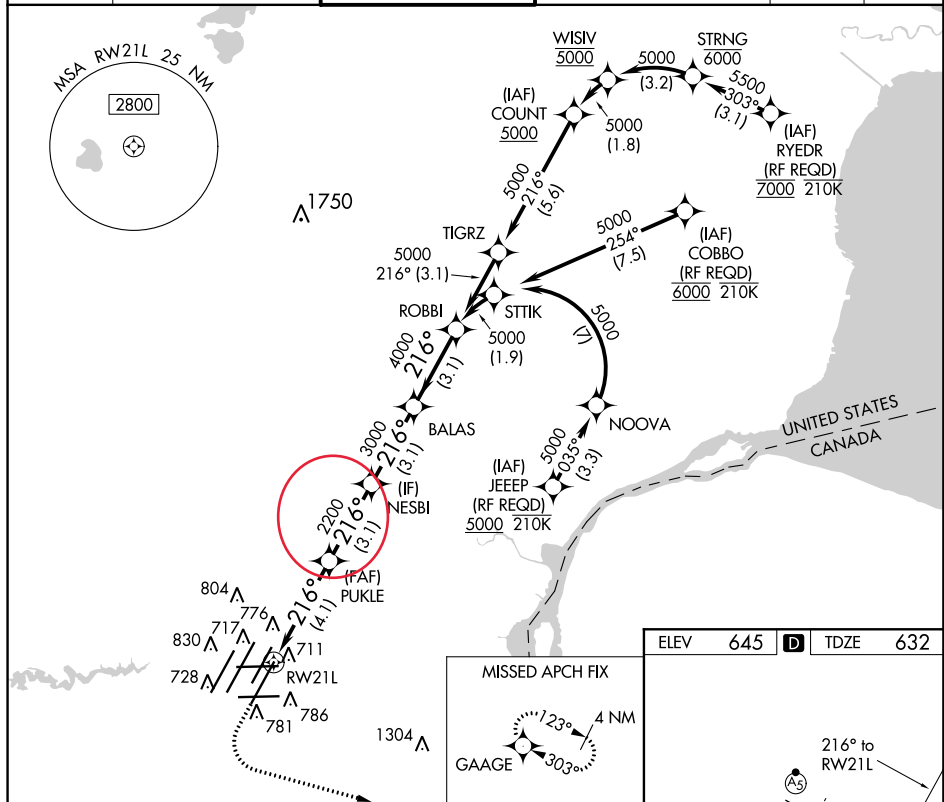
Simultaneous approach authorized. Use of FD or AP providing RNAV track guidance required during simultaneous operations. For uncompensated Baro-VNAV systems, procedure NA below -19°C or above 54°C.

MALS

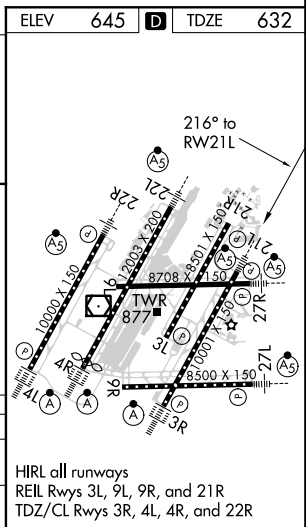


MISSED APPROACH: Climb to 1100 then climbing left turn to 4000 direct GAAGE and hold, continue climb-in-hold to 4000.

D-ATIS	DETROIT APP CON	METRO TOWER	GND CON	CLNC DEL	CPDLC
133.675	125.15 284.0	118.4 317.725	121.8 (NW) 119.45 (NE) 132.725 (SW) 119.25 (SE)	120.65	



1100	4000	GAAGE	VGSI and RNAV glidepath not coincident (VGSI Angle 3.00/TCH 80).	ROBBI
CATEGORY	A	B	C	D
RNP 0.30 DA	1062/40	430 (500-3/4)		
AUTHORIZATION REQUIRED				



DETROIT, MICHIGAN

Amtd 1 10OCT19

42°13'N-83°21'W

DETROIT METROPOLITAN WAYNE COUNTY (DTW)

RNAV (RNP) X RWY 21L

EC-1, 10 OCT 2019 to 07 NOV 2019

FIG as flown by Flight Check

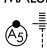
DETROIT, MICHIGAN

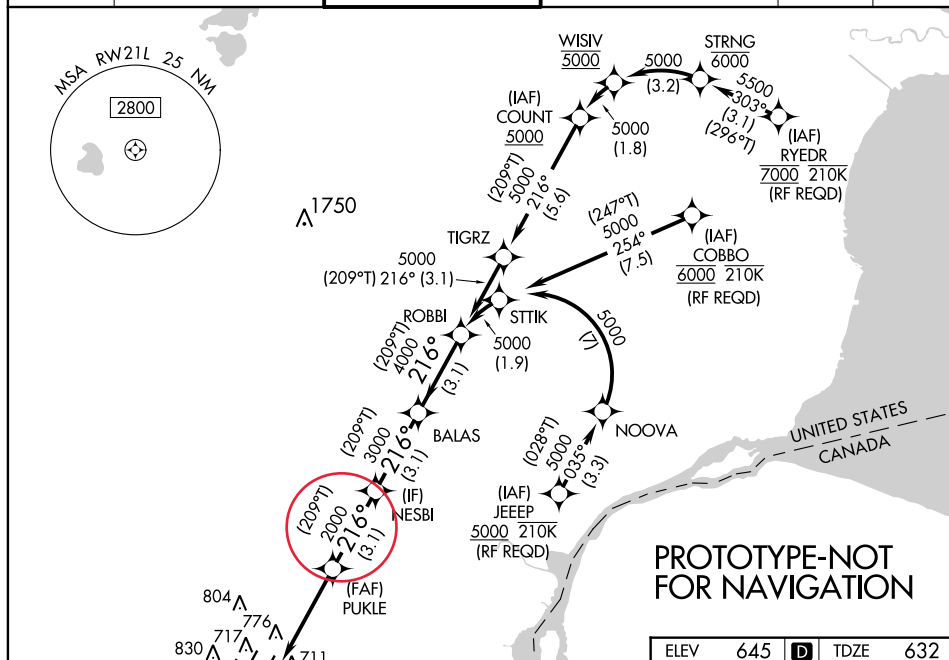
AL-119 (FAA)

FIG

APP CRS	Rwy Idg	10001
216°	TDZE	632
	Apt Elev	645

RNAV (RNP) X RWY 21L DETROIT METROPOLITAN WAYNE COUNTY (DTW)

RNP AR APCH			MALSR 	MISSED APPROACH: Climb to 1100 then climbing left turn to 4000 direct GAAGE and hold, continue climb-in-hold to 4000.	
▼ Simultaneous approach authorized. Use of FD or AP providing RNAV track guidance required during simultaneous operations. For uncompensated Baro-VNAV systems, procedure NA below -19°C or above 54°C.					
D-ATIS 133.675	DETROIT APP CON 125.15 284.0	METRO TOWER 118.4 317.725	GND CON 121.8 (NW) 119.45 (NE) 132.725 (SW) 119.25 (SE)		CLNC DEL 120.65
			CPDLC		



1100 ↑	4000 ↘	GAAGE ✧	VGSI and RNAV glidepath not coincident (VGSI Angle 3.00/TCH 80).
PUKLE 2000		NESBI 3000	BALAS (209°T) 4000
RW21L 4.1 NM		ROBBI 5000	
GP 3.00° TCH 55			
CATEGORY	A	B	C
RNP 0.30 DA	1062/40 430 (500-¾)		
AUTHORIZATION REQUIRED			

DETROIT, MICHIGAN

Amtd 1 FIG

42°13'N-83°21'W

DETROIT METROPOLITAN WAYNE COUNTY (DTW)

RNAV (RNP) X RWY 21L