

Flight Procedure Tracking Form		Action: FLIGHT CHECK	Task Type: IAP	Date Open: 09/23/2019	Task #: 2019092332128901001	Request #: 20190923321289
Procedure: RNAV (GPS) RWY 31 AMDT 1C			Airport ID: KMOT	Airport: MINOT INTL		Reimbursable #: NO
City: MINOT	ST: ND	GPS #:	Estimated Chart Date: 01/30/2020		FICO #:	
Fac ID: N/A		Fac. Type:			Specialist: ROSE BOONE	
Procedure Review						
	Rec'd	Rel'd	Full Name	Comments		
Lead:	09/23/2019			QUALITY Digitally signed by		
QA:				24 DAVID W SAUER		
Liaison:				CHECKED Nov 04, 2019		
Procedure Comments:			ENROUTE-NON	Remark Type: INFORMATION		
AIRNAV DATA PUBLISHES 10-10-2019 ABBREVIATED AMENDMENT CRC CHANGED FROM E15F678C TO 5568771A FLIGHT CHECK REQUIRED CONTACT DAVE DANNER: (405)954-5077						

QUALITY
26
CHECKED

MINOT, NORTH DAKOTA


AL-635 (FAA)

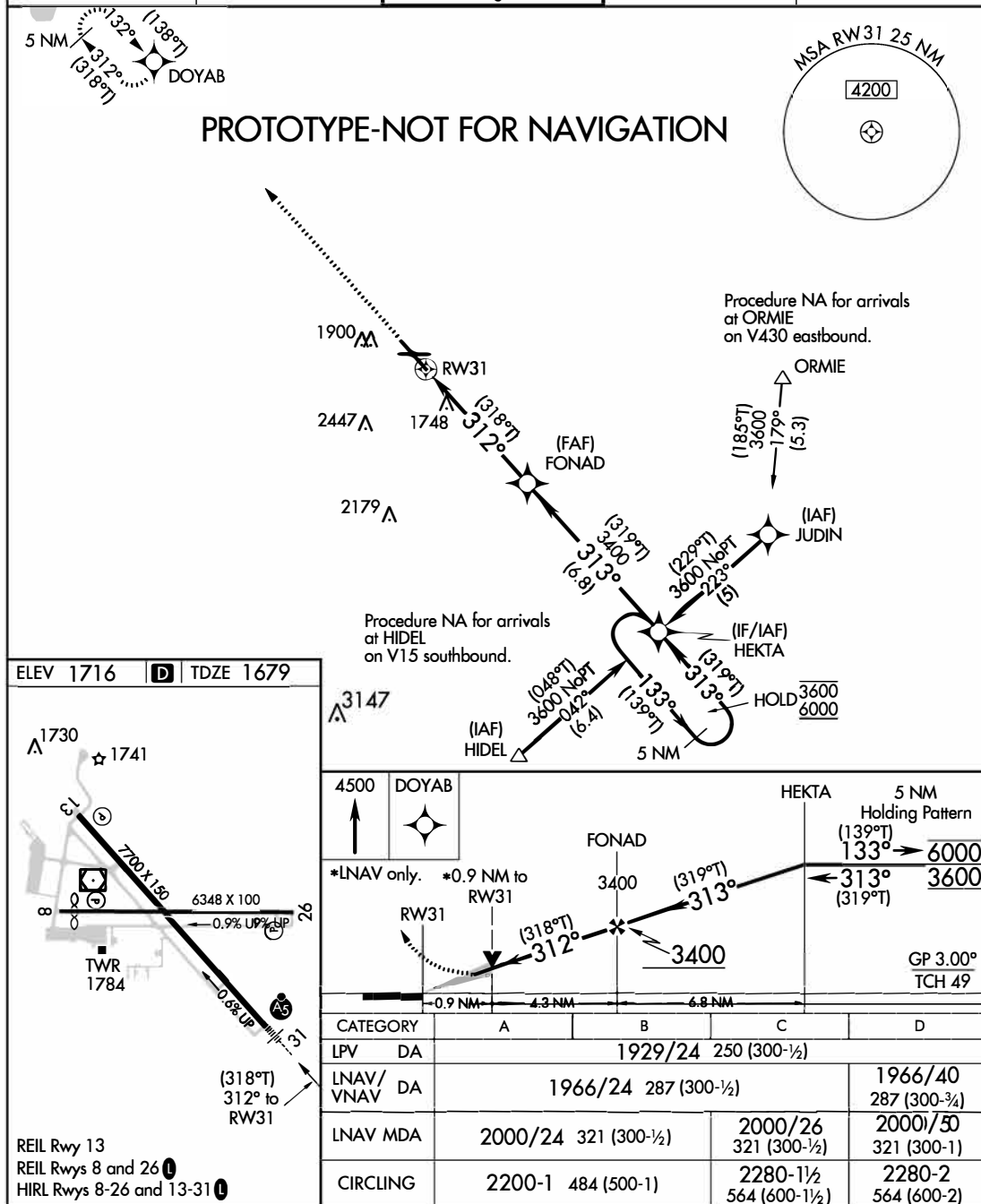
FIG

WAAS CH 66099 W31A	APP CRS 312°	Rwy Idg TDZE 1679 Apt Elev 1716
--	------------------------	---

RNAV (GPS) RWY 31

MINOT INTL (MOT)

RNP APCH.		<div>MALSR</div> <div></div>	MISSED APPROACH: Climb to 4500 direct DOYAB and hold.		
<div><div>T</div><div>A</div></div>	For uncompensated Baro-VNAV systems, LNAV/VNAV NA below -18°C or above 54°C. For inop ALS increase LNAV/VNAV visibility to RVR 4500.				
ASOS 118.725	MINOT APP CON ★ 119.6 363.8	MAGIC CITY TOWER ★ 118.2(CTAF) 251.125	GND CON 121.9	UNICOM 122.95	



AUTOMATED AL-635 RNAV (GPS) RWY 31

NC-1

08/14/19

COMPILER: KMF

REVIEWER:

DBL CHKR:

EFF: FIG

MINOT, NORTH DAKOTA

Amdt 1C FIG

48°15'N-101°17'W

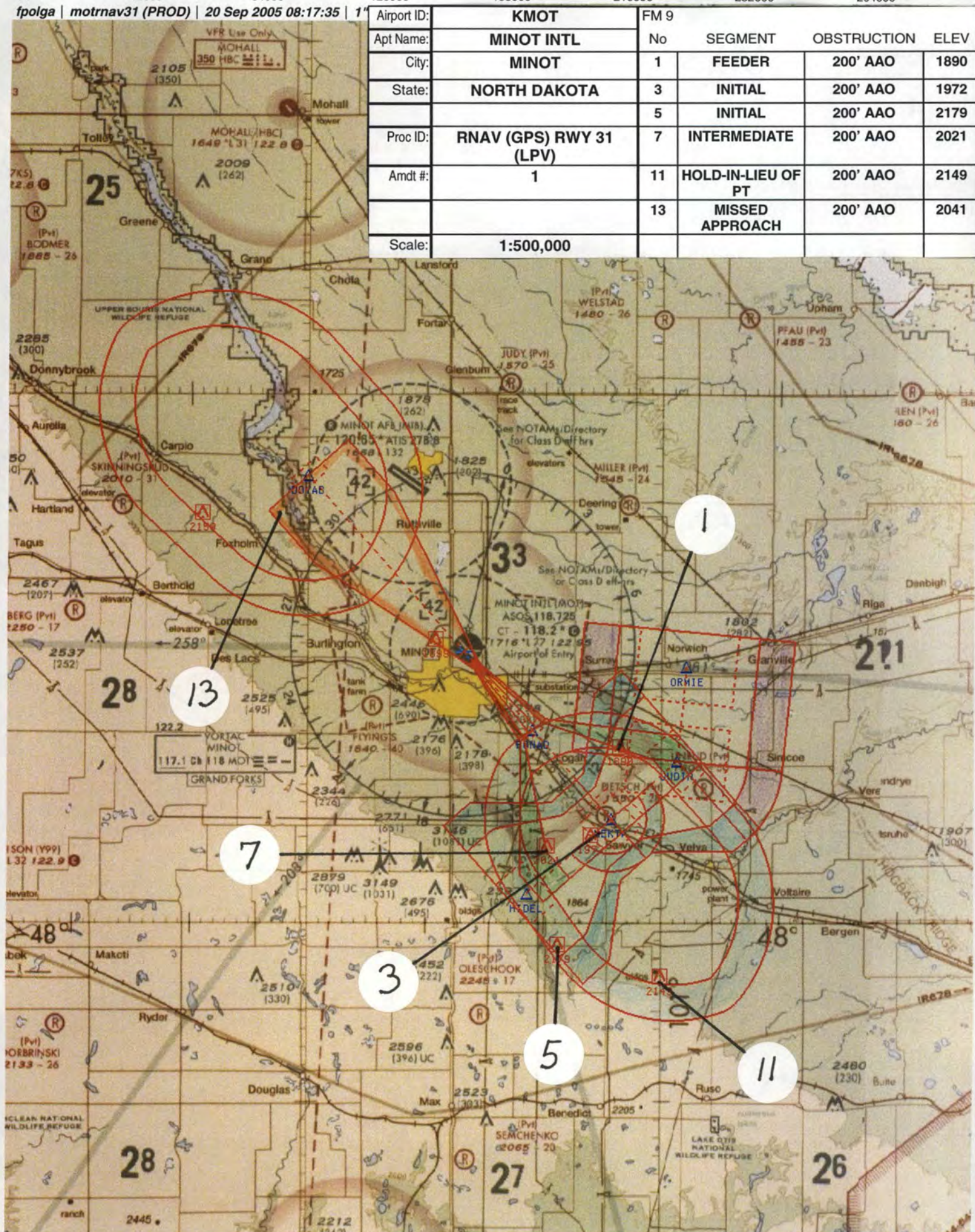
MINOT INTL (MOT)

RNAV (GPS) RWY 31

NM 7 14 21 28 35 42 49
 FT 42000 84000 126000 168000 210000 252000 294000

fpolga | motrnav31 (PROD) | 20 Sep 2005 08:17:35 | 1

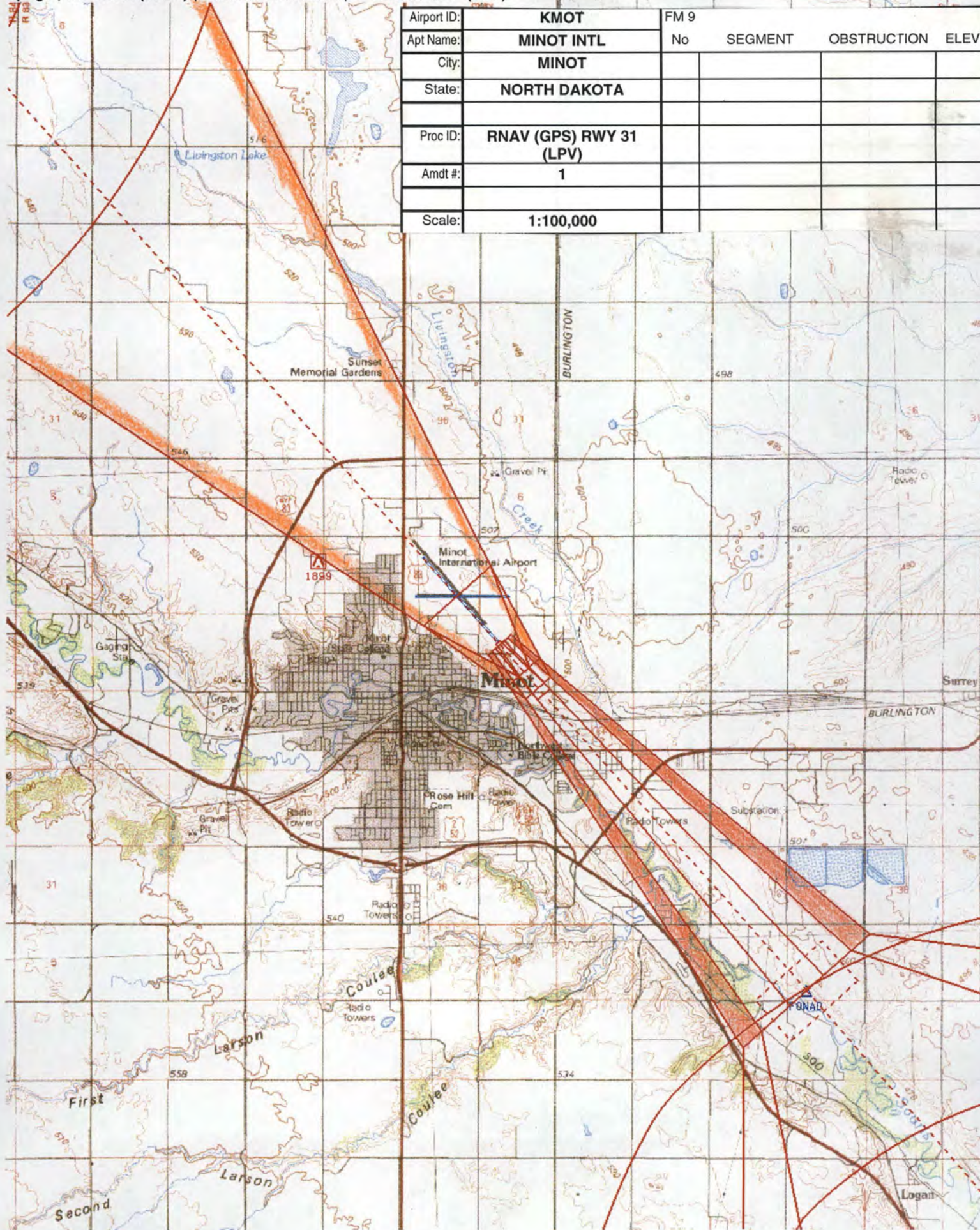
Airport ID:	KMOT	FM 9			
Apt Name:	MINOT INTL	No	SEGMENT	OBSTRUCTION	ELEV
City:	MINOT	1	FEEDER	200' AAO	1890
State:	NORTH DAKOTA	3	INITIAL	200' AAO	1972
		5	INITIAL	200' AAO	2179
Proc ID:	RNAV (GPS) RWY 31 (LPV)	7	INTERMEDIATE	200' AAO	2021
Amdt #:	1	11	HOLD-IN-LIEU OF PT	200' AAO	2149
		13	MISSED APPROACH	200' AAO	2041
Scale:	1:500,000				



NM 1 2 3 4 5 6 7 8 9 10
FT 8000 16000 24000 32000 40000 48000 56000 64000

fpolga | motrnav31 (PROD) | 10 Jun 2005 13:39:24 | 1" = 8333.3 feet (MAP)

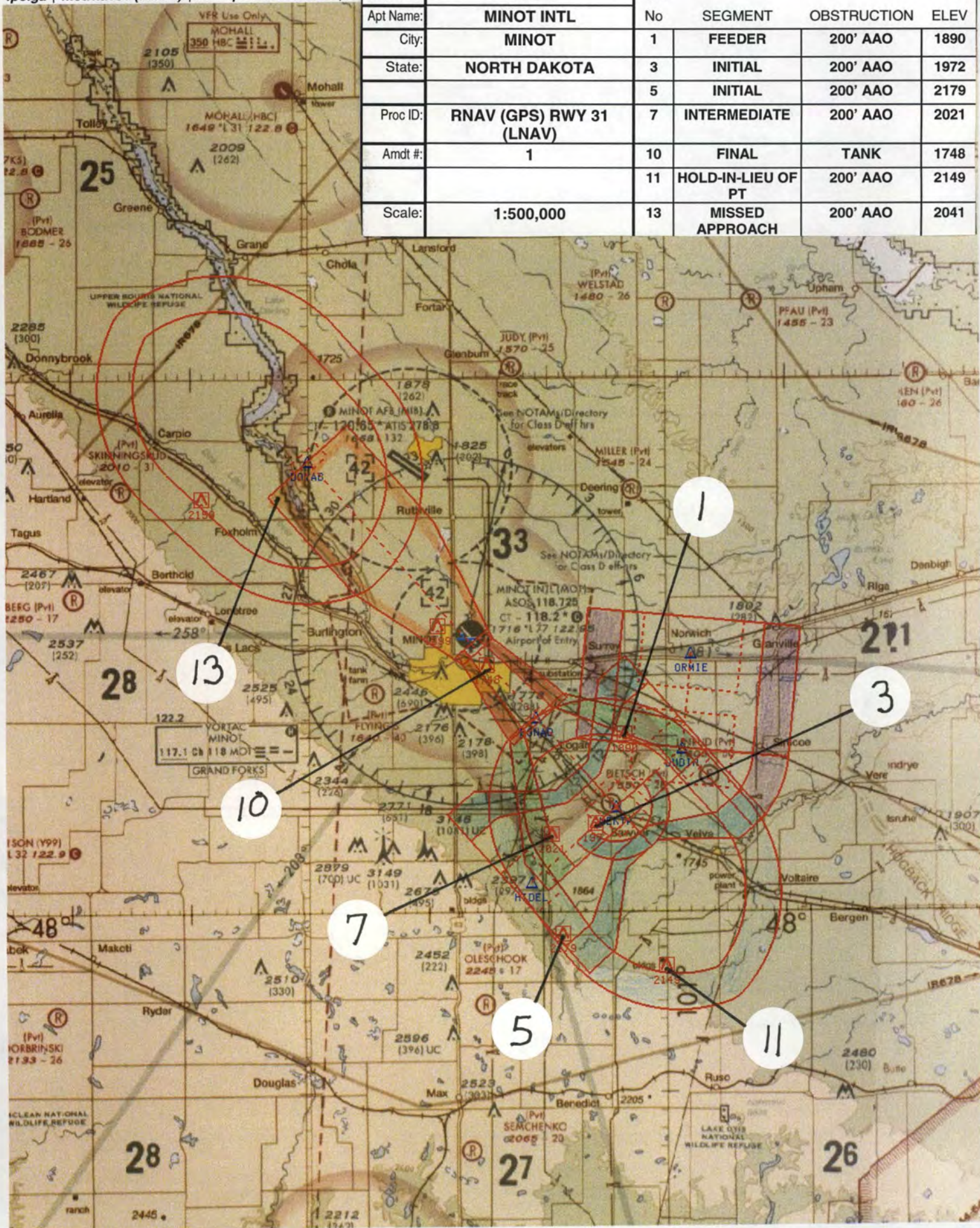
Airport ID:	KMOT	FM 9			
Apt Name:	MINOT INTL	No	SEGMENT	OBSTRUCTION	ELEV
City:	MINOT				
State:	NORTH DAKOTA				
Proc ID:	RNAV (GPS) RWY 31 (LPV)				
Amdt #:	1				
Scale:	1:100,000				



NM 7 14 21 28 35 42 49
FT 42000 84000 126000 168000 210000 252000 294000

fpolga | motnnav31 (PROD) | 20 Sep 2005 08:18:46 | 1"

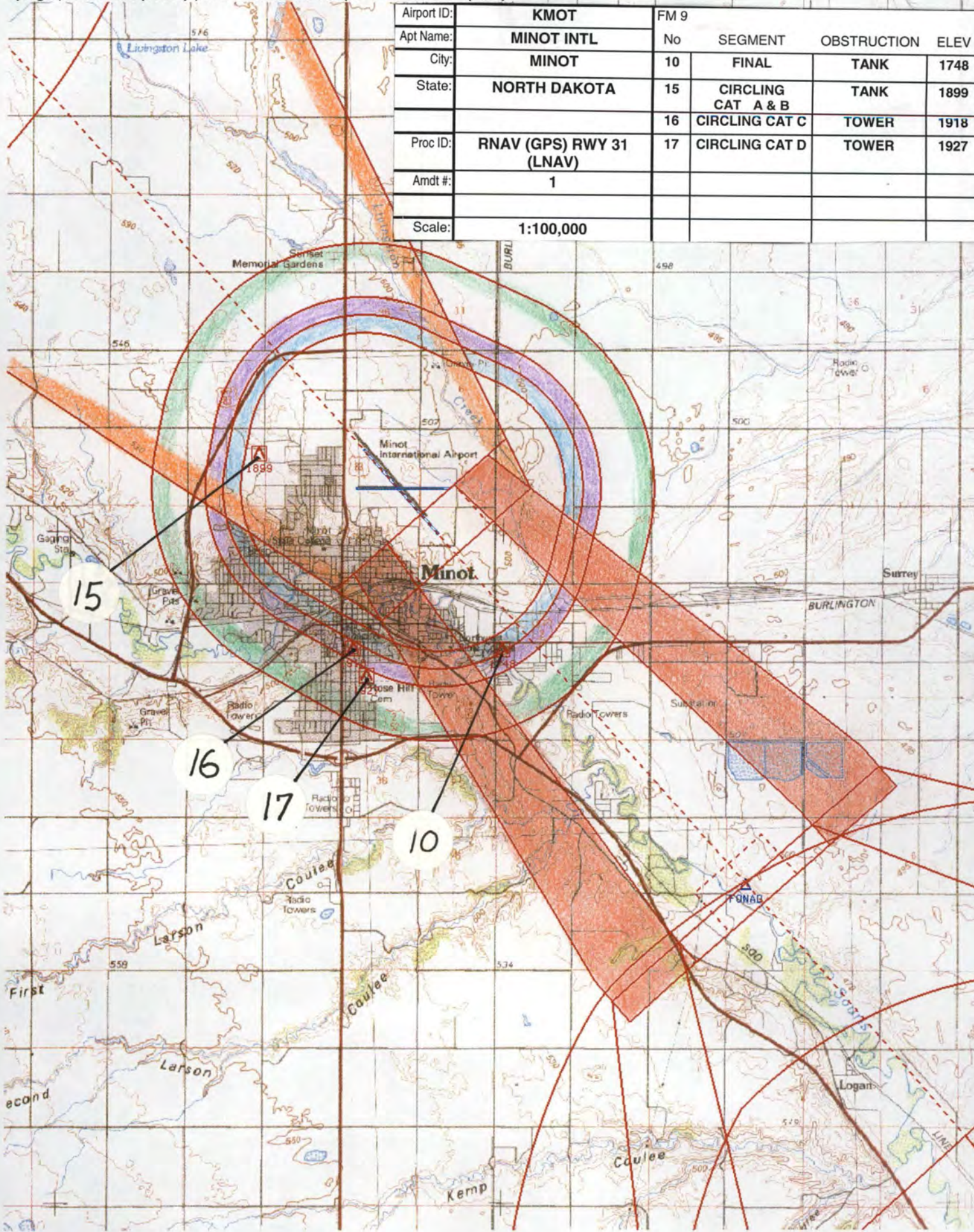
Airport ID:	KMOT		FM 9		
Apt Name:	MINOT INTL		No	SEGMENT	OBSTRUCTION ELEV
City:	MINOT		1	FEEDER	200' AAO 1890
State:	NORTH DAKOTA		3	INITIAL	200' AAO 1972
			5	INITIAL	200' AAO 2179
Proc ID:	RNAV (GPS) RWY 31 (LNAV)		7	INTERMEDIATE	200' AAO 2021
Amdt #:	1		10	FINAL	TANK 1748
			11	HOLD-IN-LIEU OF PT	200' AAO 2149
Scale:	1:500,000		13	MISSED APPROACH	200' AAO 2041



NM 1 2 3 4 5 6 7 8 9 10
FT 8000 16000 24000 32000 40000 48000 56000 64000

fpolga | motrnav31 (PROD) | 10 Jun 2005 13:54:52 | 1" = 8333.3 feet (MAP)

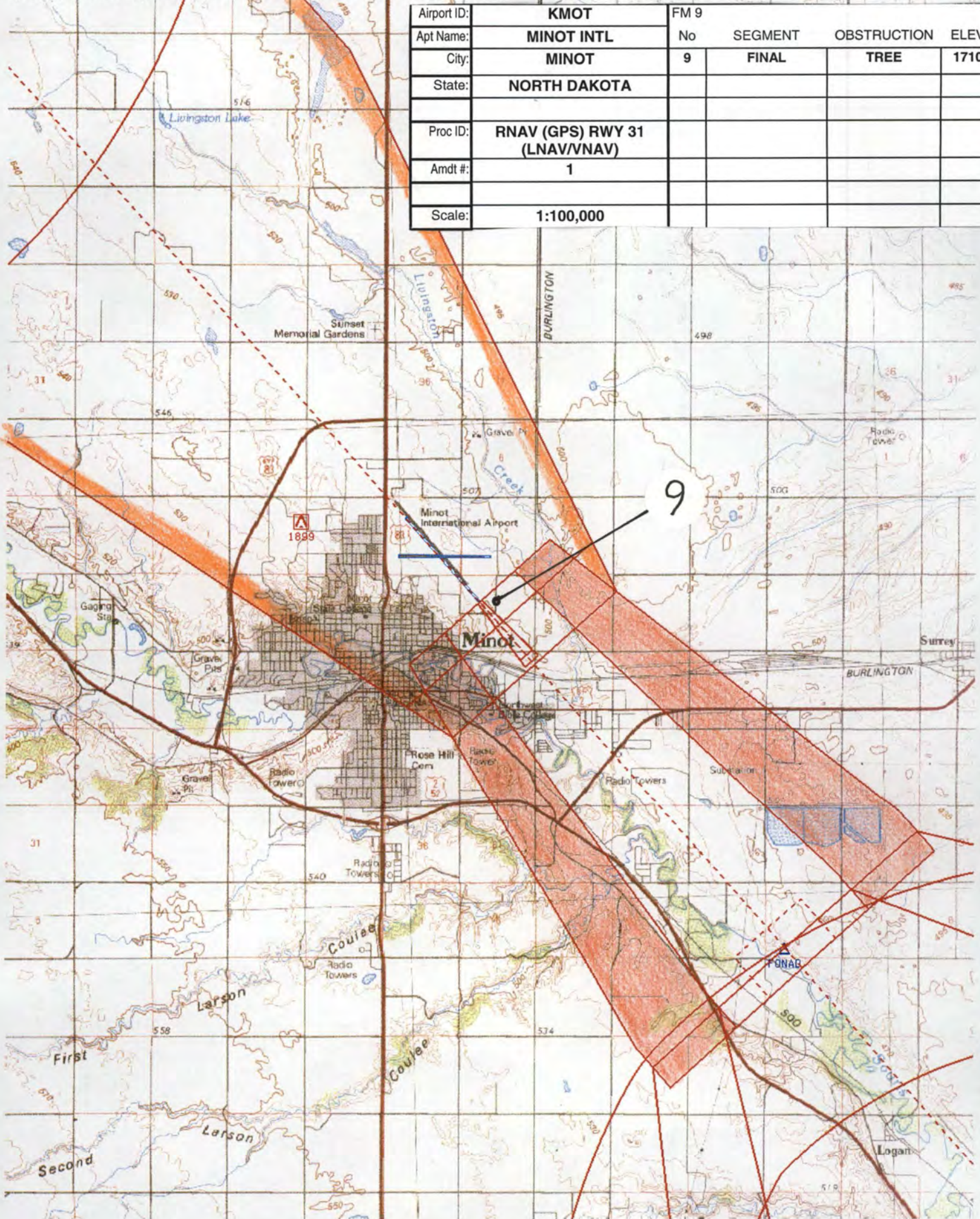
Airport ID:	KMOT	FM 9			
Apt Name:	MINOT INTL	No	SEGMENT	OBSTRUCTION	ELEV
City:	MINOT	10	FINAL	TANK	1748
State:	NORTH DAKOTA	15	CIRCLING CAT A & B	TANK	1899
		16	CIRCLING CAT C	TOWER	1918
Proc ID:	RNAV (GPS) RWY 31 (LNAV)	17	CIRCLING CAT D	TOWER	1927
Amdt #:	1				
Scale:	1:100,000				



NM 1 2 3 4 5 6 7 8 9 10
FT 8000 16000 24000 32000 40000 48000 56000 64000

fpolga | motrnav31 (PROD) | 10 Jun 2005 13:42:57 | 1" = 8333.3 feet (MAP)

Airport ID:	KMOT	FM 9			
Apt Name:	MINOT INTL	No	SEGMENT	OBSTRUCTION	ELEV
City:	MINOT	9	FINAL	TREE	1710
State:	NORTH DAKOTA				
Proc ID:	RNAV (GPS) RWY 31 (LNAV/VNAV)				
Amdt #:	1				
Scale:	1:100,000				



fpolga | motrnav31 (PROD) | 20 Sep 2005 08:18:04 | 1

Airport ID:	KMOT	FM 9			
Apt Name:	MINOT INTL	No	SEGMENT	OBSTRUCTION	ELEV
City:	MINOT	1	FEEDER	200' AAO	1890
State:	NORTH DAKOTA	3	INITIAL	200' AAO	1972
		5	INITIAL	200' AAO	2179
Proc ID:	RNAV (GPS) RWY 31 (LNAV/VANV)	7	INTERMEDIATE	200' AAO	2021
Amdt #:	1	9	FINAL	TREE	1710
		11	HOLD-IN-LIEU OF PT	200' AAO	2149
Scale:	1:500,000	13	MISSED APPROACH	200' AAO	2041

