
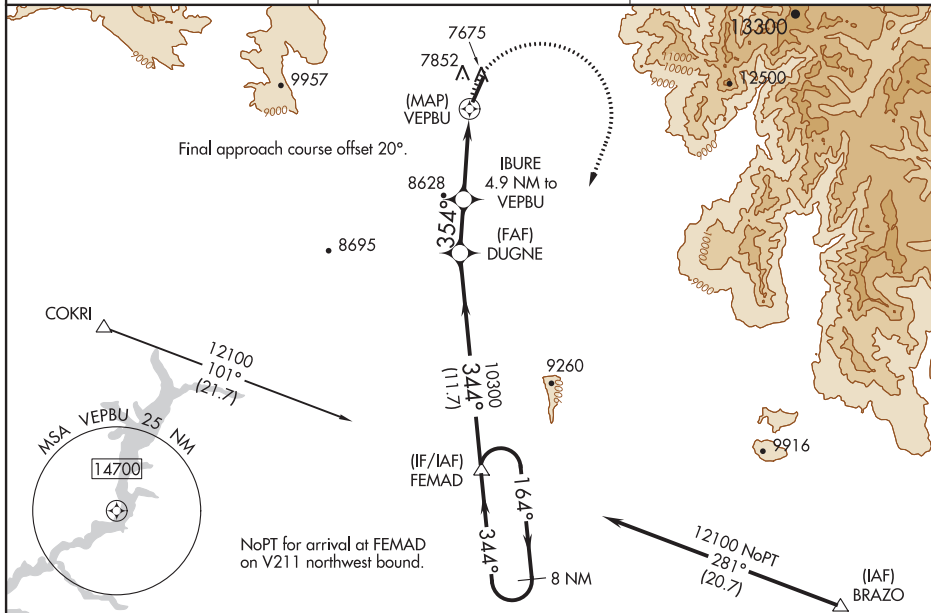


Flight Procedure Tracking Form		Action: FLIGHT CHECK	Task Type: IAP	Date Open: 09/19/2019	Task #: 2019091932392701001	Request #: 20190919323927
Procedure: RNAV (GPS) RWY 1 AMDT 0A			Airport ID: KPSO	Airport: STEVENS FIELD		Reimbursable #: NO
City: PAGOSA SPRINGS	ST: CO	GPS #:	Estimated Chart Date: 01/30/2020		FICO #:	
Fac ID: N/A		Fac. Type:			Specialist: ROSE BOONE	
Procedure Review						
	Rec'd	Rel'd	Full Name	Comments		
Lead:	09/19/2019					
QA:						
Liaison:						
Procedure Comments: ENROUTE-NON Remark Type: INFORMATION CHART CIRCLING ICON CONTACT: DAVID DANNER AJV-A421 LEAD: 405.954.5077						

16147

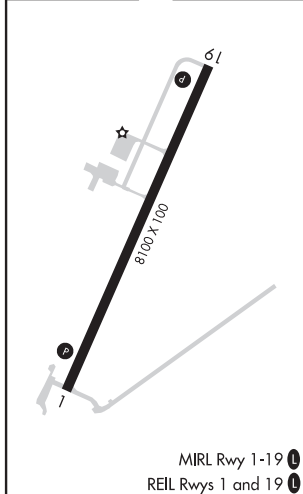
RNAV (GPS) RWY 1
STEVENS FIELD (PSO)

MISSED APPROACH: Climbing right turn to 12100 direct FEMAD and hold.



SW-1, 26 MAY 2016 to 23 JUN 2016

SW-1, 26 MAY 2016 to 23 JUN 2016



CATEGORY	A	B	C	D
LP MDA	8240-1	603 (600-1)	8240-1 ³ / ₄ 603 (600-1 ³ / ₄)	NA
RNAV MDA	8280-1	643 (700-1)	8280-1 ⁷ / ₈ 643 (700-1 ⁷ / ₈)	NA
CIRCLING	8420-1 756 (800-1)	8480-1 ¹ / ₄ 816 (900-1 ¹ / ₄)	8940-3 1276 (1300-3)	NA

STEVENS FIELD (PSO)
RNAV (GPS) RWY 1

