

<b>Flight Procedure Tracking Form</b>		<b>Action:</b> AMENDMENT	<b>Task Type:</b> IAP	<b>Date Open:</b> 09/19/2019	<b>Task #:</b> 2019091928023801001	<b>Request #:</b> 20190919280238
<b>Procedure:</b> VOR/DME RWY 13 AMDT 11E			<b>Airport ID:</b> KBKE	<b>Airport:</b> BAKER CITY MUNI		<b>Reimbursable #:</b> NO
<b>City:</b> BAKER CITY	<b>ST:</b> OR	<b>GPS #:</b>	<b>Estimated Chart Date:</b> 01/30/2020		<b>FICO #:</b>	
<b>Fac ID:</b> BKE		<b>Fac. Type:</b> VOR_DME			<b>Specialist:</b> JOHN LINDSEY	
<b>Procedure Review</b>						
	<b>Rec'd</b>	<b>Rel'd</b>	<b>Full Name</b>	<b>Comments</b>		
<b>Lead:</b>	09/19/2019					
<b>QA:</b>				CWS 11/16/2019		
<b>Liaison:</b>						
<b>Procedure Comments:</b> ENROUTE-NON <b>Remark Type:</b> INFORMATION						
P-NOTAM NEW CIRCLING AREAS  PROCESSED IAW AIRCRAFT OPERATIONS GROUP (AJW-33) MEMO, OCTOBER 3, 2018, SUBJECT: FLIGHT INSPECTION REVIEW NOT REQUIRED.  DAVE DANNER, 405-954-5077						

QUALITY  
25  
CHECKED

QUALITY  
15  
CHECKED

BAKER CITY, OREGON

AL-35 (FAA)

14037

VOR/DME BKE <b>115.3</b> Chan <b>100</b>	APP CRS <b>118°</b>	Rwy Idg TDZE Apt Elev <b>5085</b> <b>3370</b> <b>3373</b>
--	------------------------	--

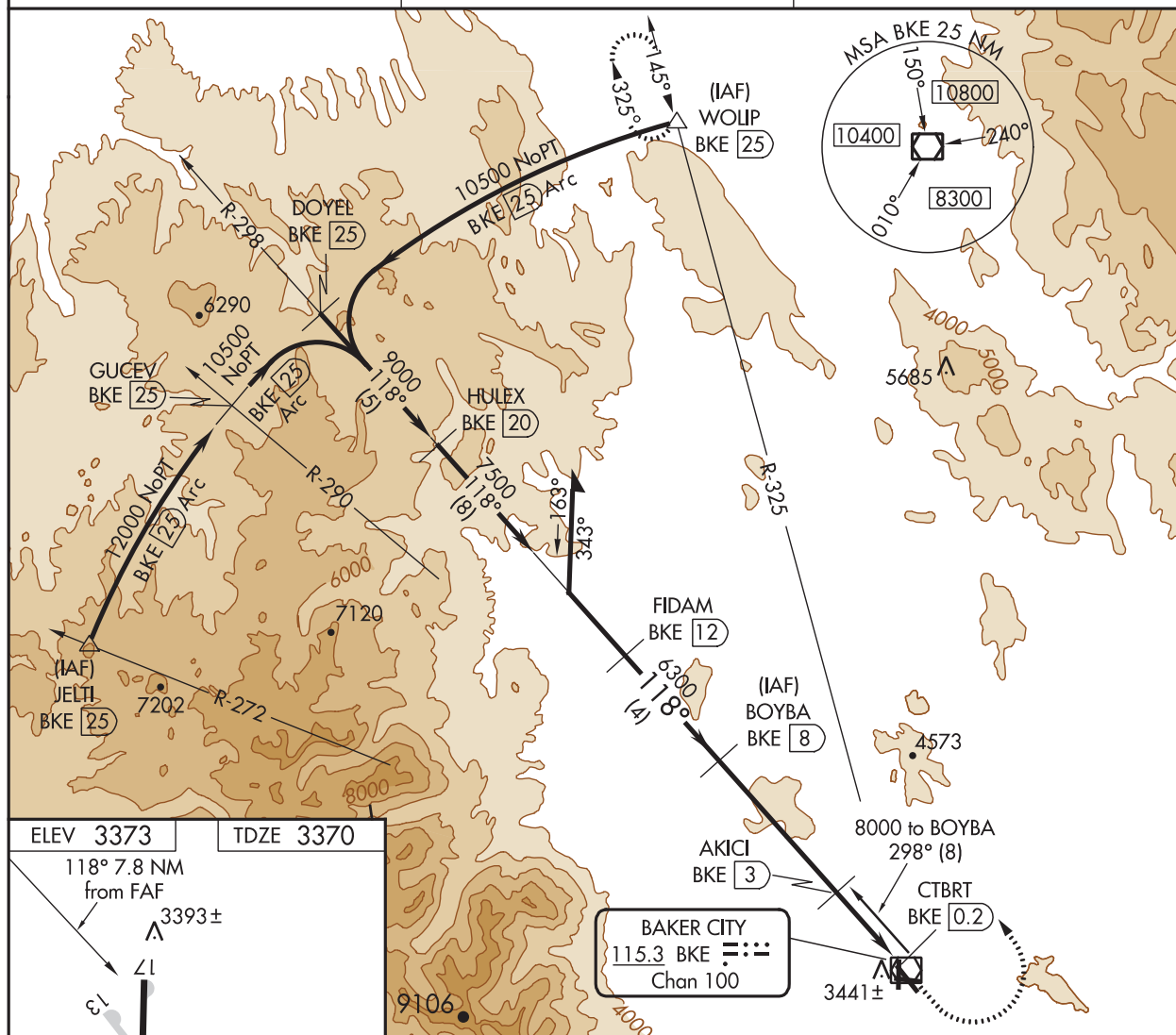
**OLD**
**VOR/DME RWY 13**  
 BAKER CITY MUNI (BKE)

 Circling to Rwy 8/17/26/35 NA at night.  
 Helicopter visibility reduction below 1 SM NA.

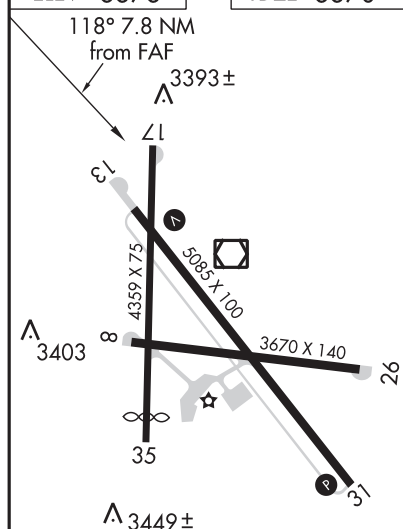
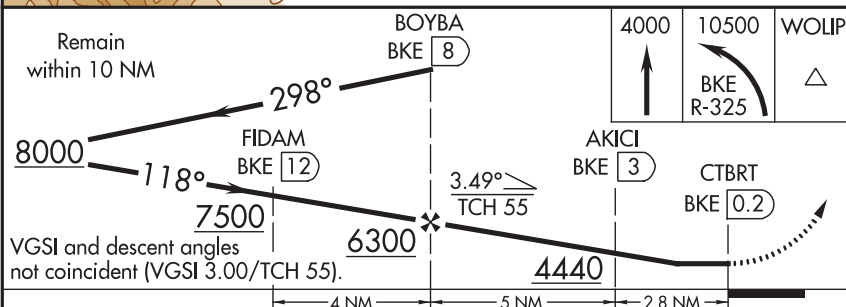
 MISSED APPROACH: Climb to 4000 then climbing  
 left turn to 10500 via BKE R-325 to WOLIP and hold.

 ASOS  
**134.275**

 SALT LAKE CENTER  
**128.05 306.95**

 UNICOM  
**123.0 (CTAF) 0**


ELEV 3373 TDZE 3370


 REIL Rwy 13 and 31 **L**  
 MIRL Rwy 13-31 **L**


CATEGORY	A	B	C	D
S-13	4000-1 630 (700-1)		4000-1¾ 630 (700-1¾)	4000-2 630 (700-2)
CIRCLING	4000-1 627 (700-1)		4000-1¾ 627 (700-1¾)	4220-2¾ 847 (900-2¾)

 BAKER CITY, OREGON  
 Amdt 11D 06FEB14

44°50'N-117°49'W

 BAKER CITY MUNI (BKE)  
**VOR/DME RWY 13**

NW-1, 06 FEB 2014 to 06 MAR 2014

NW-1, 06 FEB 2014 to 06 MAR 2014



KBKE  
BAKER CITY MUNI  
BAKER CITY, OR.  
VOR/DME RWY 13, AMDT 11E  
**RNAV (GPS) RWY 13, AMDT 2**  
**LNAV/CIRC/MISSED MAP USED**  
**FOR NEW CIRC RADII MAP**  
**ONLY**

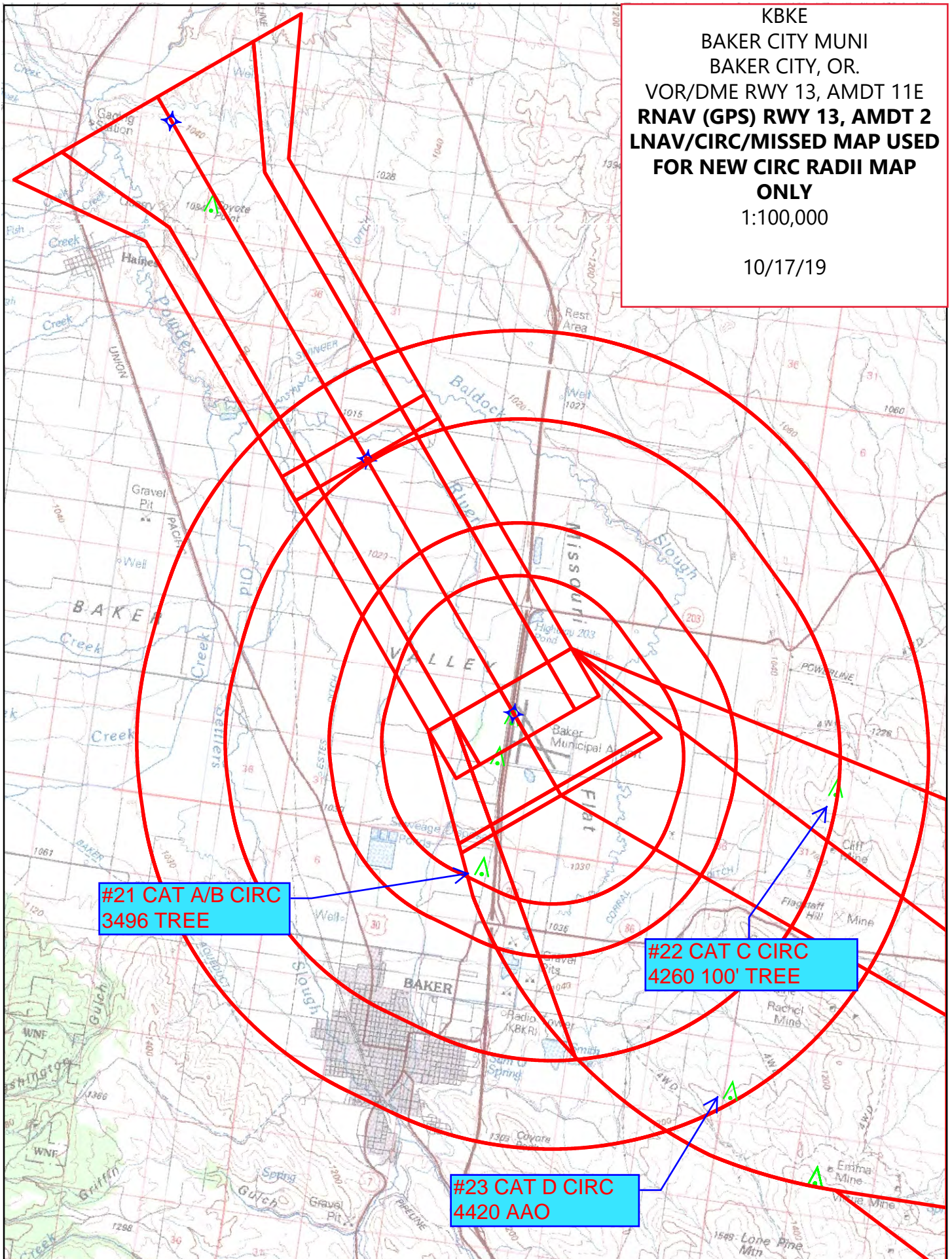
1:100,000

10/17/19

#21 CAT A/B CIRC  
3496 TREE

#22 CAT C CIRC  
4260 100' TREE

#23 CAT D CIRC  
4420 AAO



## STANDARD INSTRUMENT APPROACH PROCEDURE DATA RECORD

EXCERPT FROM KBKE RNAV (GPS) RWY 18  
SHOWING NEW CIRCLING AREAS AND  
CONTROLLING OBSTACLES

## PART - A OBSTRUCTION DATA

1. APP SEGMENT	FROM	TO	OBSTRUCTION	COORDINATES	ELEV. MSL	ROC	ALT. ADJUSTMENTS	MIN. ALT.					
INITIAL	JELTI	SITOC	1. AAO	445825.98N/1181826.37W	7402 (2A)	1000	PR340	8800					
			2. TERRAIN	445825.98N/1181826.37W	7202 (7200)		AS1500	8700					
INITIAL	WOLIP	SITOC	3. AAO	450636.00N/1180821.00W	6000 (2C)	1000	PR330 AT1470	8800					
			4. TERRAIN	450636.00N/1180821.00W	5800 (5800)		AS1500	7300					
INITIAL	LACED	SITOC	5. AAO	450915.00N/1181648.00W	6326 (3E)	1000	PR270 AT1204	8800					
			6. TERRAIN	450915.00N/1181648.00W	6126 (6100)		AS1500	7600					
INTERMEDIATE	SITOC	TEGTE	7. AAO	450030.74N/1180820.70W	6360 (2C)	500	PR170 AT524 SA-454	7100					
			8. TERRAIN	450657.00N/1180539.00W	5289 (5300)		AS1500	6800					
INTERMEDIATE	SITOC	TEGTE	9. AAO	450636.00N/1180827.00W	6020 (2C)	500	AT445 PR170 SA-35	7100					
			10. TERRAIN	450527.00N/1180836.00W	5473 (5500)		AS1500	7000					
INTERMEDIATE	SITOC	TEGTE	11. AAO	450506.35N/1180848.63W	5760 (2C)	500	AT670 PR170	7100					
			12. TERRAIN	450433.00N/1180648.00W	5299 (5300)		AS1500	6800					
INTERMEDIATE:	TEGTE	ZASKA	13. AAO	445833.00N/1180315.00W	4544 (3E)	500	SA-497 AT1160 AC92	5800					
STEPDOWN			14. TERRAIN	445845.00N/1175718.00W	3665 (3700)		AS1500	5200					
FINAL: LPV	ZASKA	RW13	15. TREE	445049.26N/1174908.07W	3427 (1A)	34:1	MA1	3621/251					
2. PROCEDURE TURN													
3. MISSED APPROACH	MAP:	DA / DA / DA /	GOYEK	15. TREE	445049.26N/1174908.07W	3427 (1A)	ASC	11000					
		RW13		19. AAO	445004.82N/1174322.24W	4340 (2C)	ASC	11000					
	ELEV:	3427/3548/3755/4100		20. AAO	444620.29N/1174338.13W	4800 (2C)	1000	5800					
4. CIRCLING AREA	DISTANCE	HT. ABV. ARPT.											
CATEGORY A	1.3 NM	REQUIRED	350	ACTUAL	827	22. TREE	444849.68N/1174859.30W	3496 (1A)	300	SI	4200		
CATEGORY B	1.5 NM		450		827	22. TREE	444849.68N/1174859.30W	3496 (1A)	300	SI	4200		
CATEGORY C	1.7 NM		450		1187	23. 100' TREE	445015.00N/1174348.00W	4260 (2C)	300		4560		
CATEGORY D	2.3 NM		550		1347	24. AAO	444642.00N/1174436.00W	4420 (2C)	300		4720		
CATEGORY E	4.5 NM		550										
5. MINIMUM SAFE ALTITUDES													
PRIMARY NAVAD: RW13													
SECTOR	OBSTRUCTION	BRG/DIST	ELEVATION (MSL)	M S A	SECTOR	OBSTRUCTION	BRG/DIST	ELEVATION (MSL)	M S A				
360-360	AAO	045/27.7	9800 (6A)	10800									
CITY AND STATE			ELEVATION: 3373		FACILITY		PROCEDURE AND AMENDMENT NO:			REGION			
BAKER CITY, OR			AIRPORT NAME:		RNAV		RNAV (GPS) RWY 13, AMDT 2A			ANM			
			BAKER CITY MUNI										