


<b>Flight Procedure Tracking Form</b>		<b>Action:</b> AMENDMENT	<b>Task Type:</b> IAP	<b>Date Open:</b> 09/18/2019	<b>Task #:</b> 2019091833020901001	<b>Request #:</b> 20190918330209	
<b>Procedure:</b> APPROACH VOR A AMDT 6B			<b>Airport ID:</b> KPOV	<b>Airport:</b> PORTAGE COUNTY		<b>Reimbursable #:</b> NO	
<b>City:</b> RAVENNA	<b>ST:</b> OH	<b>GPS #:</b>	<b>Estimated Chart Date:</b> 01/30/2020		<b>FICO #:</b>		
<b>Fac ID:</b> N/A		<b>Fac. Type:</b>			<b>Specialist:</b> ALEXANDER MILES		
<b>Procedure Review</b>							
	<b>Rec'd</b>	<b>Rel'd</b>	<b>Full Name</b>	<b>Comments</b>			
<b>Lead:</b>	09/18/2019						
<b>QA:</b>							CWS 10/23/2019
<b>Liaison:</b>							
<b>Procedure Comments:</b> ENROUTE-NON <b>Remark Type:</b> INFORMATION							
P-NOTAM NEW CIRCLING AREAS  PROCESSED IAW AIRCRAFT OPERATIONS GROUP (AJW-33) MEMO, OCTOBER 3, 2018, SUBJECT: FLIGHT INSPECTION REVIEW NOT REQUIRED.  DAVE DANNER, 405-954-5077							



OLD

RAVENNA, OHIO

AL-5844 (FAA)

19227

VOR/DME ACO <b>114.4</b> Chan <b>91</b>	APP CRS <b>344°</b>	Rwy Idg <b>N/A</b> TDZE <b>N/A</b> Apt Elev <b>1197</b>
---	------------------------	---

APP CRS  
344°

Rwy Idg	
TDZE	
Apt Elev	

N/A  
N/A  
1197

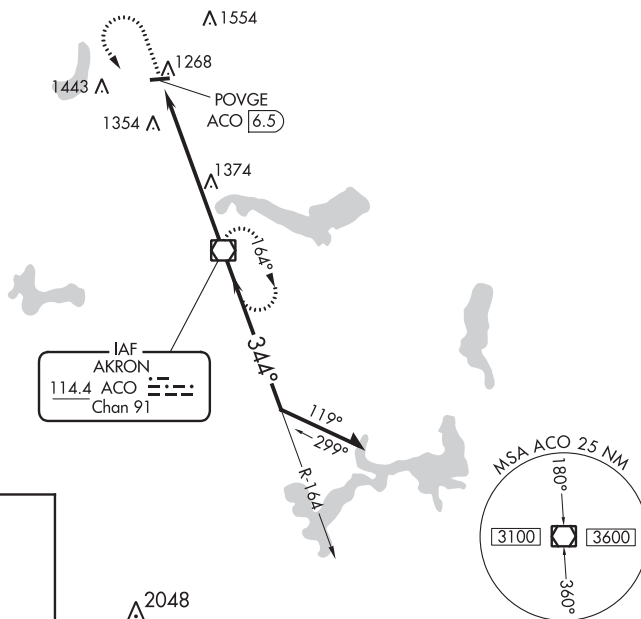
VOR-A  
PORTAGE COUNTY (POV)

**T** When local altimeter setting not received, use Akron-Canton  
**A** Rgnl altimeter setting and increase all MDA 60 feet.  
Night landing Cat C: Procedure NA.

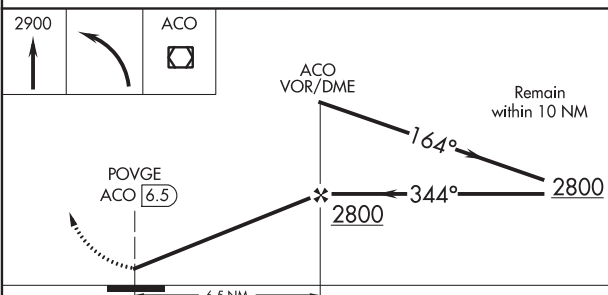
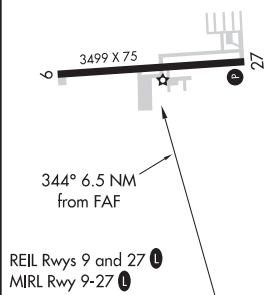
**MISSED APPROACH:** Climb to 2900 then left turn direct ACO VOR/DME and hold.

AWOS-3  
**118.675**

CLEVELAND APP CON★  
118.6 371.875

CLNC DEL  
**125.65**UNICOM  
123.05 (CTAF) L

ELEV 1197



FAF to MAP 6.5 NM						CATEGORY	A	B	C	D
Knots	60	90	120	150	180	CIRCLING	1740-1	543 (600-1)	1800-1¾ 603 (700-1¾)	NA
Min:Sec	6:30	4:20	3:15	2:36	2:10					

RAVENNA, OHIO

Amdt 6A 13NOV14

PORTAGE COUNTY (POV)

41°13'N - 81°15'W

VOR-A

EC-2, 12 SEP 2019 to 10 OCT 2019

EC-2, 12 SEP 2019 to 10 OCT 2019

STANDARD INSTRUMENT APPROACH PROCEDURE DATA RECORD											
PART - A OBSTRUCTION DATA											
1. APP SEGMENT	FROM	TO	OBSTRUCTION	COORDINATES	ELEV. MSL	ROC	ALT. ADJUSTMENTS		MIN. ALT.		
STRAIGHT-IN AREA	183/30 CW 003/30	WHINR	1. TOWER (39-000834)	410324.00N/0803843.00W	2538 (5D)	1000	AT462		4000		
			2. TERRAIN	405206.00N/0805348.00W	1388 (1400)		AS1500		2900		
STRAIGHT-IN AREA	003/30 CW 183/30	WHINR	3. TOWER (39-000439)	405324.00N/0811611.00W	2049 (4D)	1000	AT951		4000		
			4. TERRAIN	412357.00N/0810612.00W	1378 (1400)		AS1500		2900		
INTERMEDIATE	WHINR (IF/IAF)	FRDOM	5. TOWER (39-001770)	411350.20N/0810735.35W	1482 (5D)	500	AT818		2800		
			6. TERRAIN	411406.00N/0810754.00W	1205 (1200)		AS1500		2700		
FINAL: LPV	FRDOM	RW27	7. TREE (KPOVT0075)	411243.74N/0811407.50W	1269 (1A)	34:1	MA23		1466/273		
FINAL: LNAV/VNAV	FRDOM	RW27	8. TREE (KPOVT0234)	411253.76N/0811437.85W	1348 (1A)	ASC	MA43		1541/348		
FINAL: LNAV	FRDOM	WYGLE/2.50 NM TO RW27	9. AAO	411326.82N/0810928.50W	1449 (2C)	250	DG321		2020		
FINAL: LNAV STEPDOWN	WYGLE/2.50 NM TO RW27	RW27	8. TREE (KPOVT0234)	411253.76N/0811437.85W	1348 (1A)	250	XP42		1640		
2. HOLD-IN-LIEU-OF-PT	WHINR	P-5	10. AAO	411448.00N/0810436.00W	1342 (4E)	1000	AT1258		3600		
			11. TERRAIN	411448.00N/0810436.00W	1142 (1100)		AS1500		2600		
3. MISSED APPROACH	MAP: DA / DA / RW27	IWWEB	12. TREE (KPOVT1051)	411321.27N/0811428.54W	1381 (1B)	ASC			4000		
	ELEV: 1256/1348/1540		13. TOWER (39-000220)	411200.00N/0813122.00W	1489 (5D)	1000			2500		
			14. TERRAIN	411312.00N/0811957.00W	1188 (1200)		AS1500		2700		
4. CIRCLING AREA	DISTANCE	HT. ABV. ARPT.									
CATEGORY A	1.3 NM	REQUIRED	350	ACTUAL	542	15. TREE (KPOVT1043)	411327.97N/0811501.23W	1415 (1B)	300	XP25	1740
CATEGORY B	1.5 NM		450		602	16. TOWER (39-002672)	411412.00N/0811358.00W	1447 (5D)	300	AC50	1800
CATEGORY C	1.7 NM		450		722	17. TOWER (39-002784)	411435.00N/0811241.00W	1563 (5D)	300	AC50	1920
CATEGORY D	2.3 NM		550								
CATEGORY E	4.5 NM		550								
5. MINIMUM SAFE ALTITUDES				PRIMARY NAVAID:							
SECTOR	OBSTRUCTION	BRG/DIST	ELEVATION (MSL)	M S A	SECTOR	OBSTRUCTION	BRG/DIST	ELEVATION (MSL)	M S A		
CITY AND STATE		ELEVATION: 1198		FACILITY		PROCEDURE AND AMENDMENT NO:		REGION			
RAVENNA, OH		AIRPORT NAME: PORTAGE COUNTY		RNAV		RNAV (GPS) RWY 27, AMDT 1		AGL			