


Flight Procedure Tracking Form		Action: AMENDMENT	Task Type: SID	Date Open: 09/11/2019	Task #: 2019091133163901001	Request #: 20190911331639
Procedure: SID ZETTR THREE DETROIT MI KDTW			Airport ID: KDTW	Airport: DETROIT METROPOLITAN WAYNE COUNTY		Reimbursable #: NO
City: DETROIT	ST: MI	GPS #:	Estimated Chart Date: 12/05/2019		FICO #:	
Fac ID: N/A		Fac. Type:			Specialist: MICHAEL CURRAN	
Procedure Review						
	Rec'd	Rel'd	Full Name	Comments		
Lead:	09/17/2019					
QA:						
Liaison:						
Procedure Comments:			ENROUTE	Remark Type: INFORMATION		
<p>ABBREVIATED AMENDMENT.</p> <p>PROCESSED IAW AIRCRAFT OPERATIONS GROUP (AJW-33) MEMO, OCTOBER 3, 2018, SUBJECT: FLIGHT INSPECTION REVIEW NOT REQUIRED.</p> <p>CONTACT DON LANIER, TEAM 3 SUB-TEAM MANAGER, 405.954.8242.</p>						



(ZETTR2.ZETTR) 19227

AL-119 (FAA)

ZETTR TWO DEPARTURE (RNAV) Departure Routes

DETROIT METROPOLITAN WAYNE COUNTY (DTW)

DETROIT, MICHIGAN

D-ATIS 118.125
CLNC DEL 120.65
CPDLC
GND CON
121.8 (NW) 119.45 (NE)
132.725 (SW) 119.25 (SE)
METRO TOWER
118.4 317.725 (Rwys 3L/R, 21L/R, 27R)
128.75 317.725 (Rwy 27L)
135.0 317.725 (Rwy 4L/R, 22L/R)
DETROIT DEP CON
125.525 284.0 (Rwys 22L/R, 27L/R)
132.025 284.0 (Rwys 3L/R, 4L/R, Rwy 21L/R)

**TOP ALTITUDE:
17000**

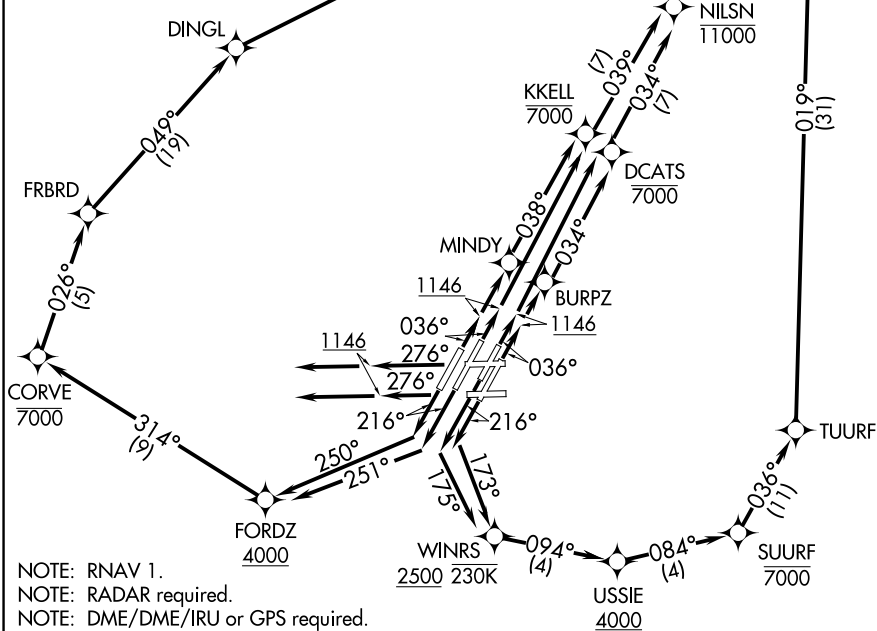
OLD

See following
page for
Transition
Routes

**ZETTR
17000**

TAKEOFF MINIMUMS:

Rwys 3L/R, 4L/R, 21L/R, 22L/R, 27L/R: Standard
with minimum climb of 500' per NM to 1146.



NOTE: RNAV 1.
NOTE: RADAR required.
NOTE: DME/DME/IRU or GPS required.
NOTE: Turbojet departures at/above 10000, maintain 280K until advised by ATC.
NOTE: TANKO TRANSITION: For use by CYYZ area arrivals only, or as assigned by ATC.
NOTE: If unable to accept 500' per NM climb rate, advise clearance delivery on initial contact.

(CONTINUED ON FOLLOWING PAGE)

NOTE: Chart not to scale.

ZETTR TWO DEPARTURE (RNAV) Departure Routes

DETROIT, MICHIGAN

(ZETTR2.ZETTR) 15AUG19

DETROIT METROPOLITAN WAYNE COUNTY (DTW)

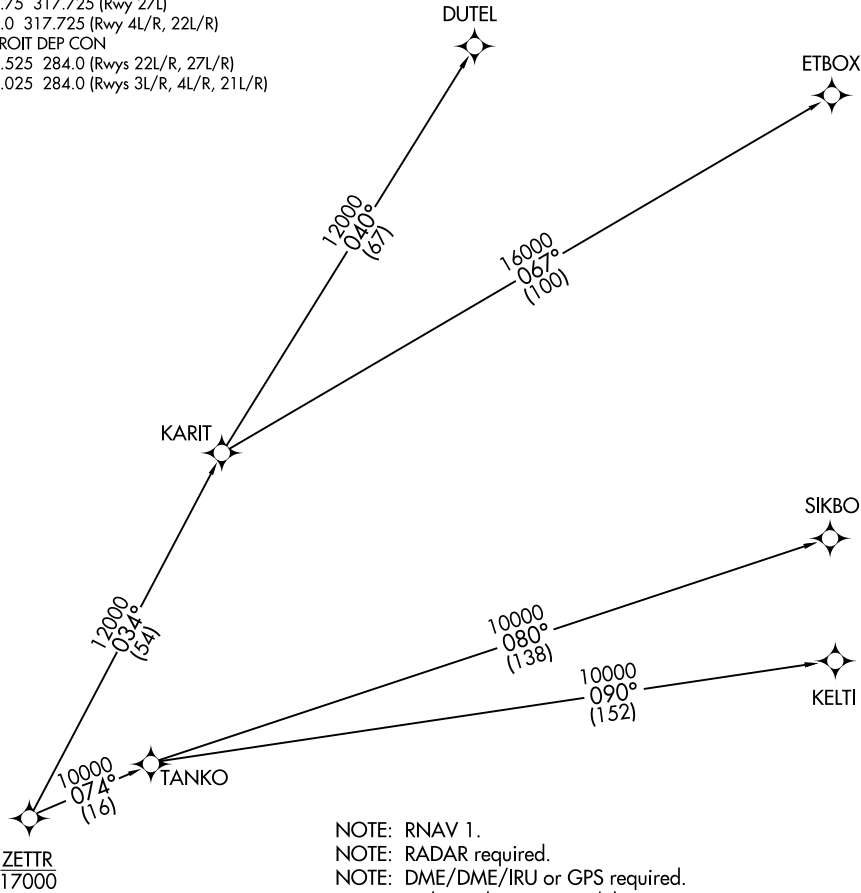
EC-1, 15 AUG 2019 to 12 SEP 2019

EC-1, 15 AUG 2019 to 12 SEP 2019

D-ATIS 118.125
CLNC DEL 120.65
CPDLC
GND CON
121.8 (NW) 119.45 (NE)
132.725 (SW) 119.25 (SE)
METRO TOWER
118.4 317.725 (Rwys 3L/R, 21L/R, 27R)
128.75 317.725 (Rwy 27L)
135.0 317.725 (Rwy 4L/R, 22L/R)
DETROIT DEP CON
125.525 284.0 (Rwys 22L/R, 27L/R)
132.025 284.0 (Rwys 3L/R, 4L/R, 21L/R)

TOP ALTITUDE:
17000

OLD



NOTE: RNAV 1.
NOTE: RADAR required.
NOTE: DME/DME/IRU or GPS required.
NOTE: Turbojet departures at/above 10000, maintain 280K until advised by ATC.
NOTE: TANKO TRANSITION: For use by CYYZ area arrivals only, or as assigned by ATC.
NOTE: If unable to accept 500' per NM climb rate, advise clearance delivery on initial contact.

(NARRATIVE CONTINUED ON FOLLOWING PAGE) NOTE: Chart not to scale.



DEPARTURE ROUTE DESCRIPTION

OLD

NOTE: See additional requirements in RNAV departure AAUP.

TAKEOFF RUNWAY 3L: Climb on heading 036° to 1146, then direct to cross DCATS at or below 7000, then on track 034° to cross NILSN at or below 11000, then on track 043° to cross FLOKA at or above 4000, thence....

TAKEOFF RUNWAY 3R: Climb on heading 036° to 1146, then direct BURPZ, then on track 034° to cross DCATS at or below 7000, then on track 034° to cross NILSN at or below 11000, then on track 043° to cross FLOKA at or above 4000, thence....

TAKEOFF RUNWAY 4L: Climb on heading 036° to 1146, then direct MINDY, then on track 038° to cross KKELL at or below 7000, then on track 039° to cross NILSN at or below 11000, then on track 043° to cross FLOKA at or above 4000, thence....

TAKEOFF RUNWAY 4R: Climb on heading 036° to 1146, then direct to cross KKELL at or below 7000, then on track then on track 039° to cross NILSN at or below 11000, then on track 043° to cross FLOKA at or above 4000, thence....

TAKEOFF RUNWAY 21L: Climb on heading 216° to intercept course 173° to cross WINRS at or above 2500 and at or below 230K, then on track 094° to cross USSIE at or above 4000, then on track 084° to cross SUURF at or below 7000, then on track 036° to TUURF, then on track 019° to cross FLOKA at or above 4000, thence....

TAKEOFF RUNWAY 21R: Climb on heading 216° to intercept course 175° to cross WINRS, at or above 2500 and at or below 230K, then on track 094° to cross USSIE at or above 4000, then on track 084° to cross SUURF at or below 7000, then on track 036° to TUURF, then on track 019° to cross FLOKA at or above 4000, thence....

TAKEOFF RUNWAY 22L: Climb on heading 216° to intercept course 251° to cross FORDZ at or above 4000, then on track 314° to cross CORVE at or below 7000, then on track 026° to FRBRD, then on track 049° to DINGL, then on track 063° to cross FLOKA at or above 4000, thence....

TAKEOFF RUNWAY 22R: Climb on heading 216° to intercept course 250° to cross FORDZ at or above 4000, then on track 314° to cross CORVE at or below 7000, then on track 026° to FRBRD, then on track 049° to DINGL, then on track 063° to cross FLOKA at or above 4000, thence....

TAKEOFF RUNWAYS 27L/R: Climb on heading 276° to 1146, then on heading 276° or as assigned for RADAR vectors to cross FLOKA at or above 4000, thence....

....on track 049° to cross ZETTR at or below 17000, then on (transition). Maintain 17000 or as assigned by ATC, expect filed altitude 10 minutes after departure.

DUTEL TRANSITION (ZETTR2.DUTEL):

ETBOX TRANSITION (ZETTR2.ETBOX):

KELTI TRANSITION (ZETTR2.KELTI):

SIKBO TRANSITION (ZETTR2.SIKBO):

TANKO TRANSITION (ZETTR2.TANKO):