


Flight Procedure Tracking Form		Action: AMENDMENT	Task Type: IAP	Date Open: 08/19/2019	Task #: 2019081932358601001	Request #: 20190819323586
Procedure: ILS OR LOC RWY 30 AMDT 8A			Airport ID: KVIS	Airport: VISALIA MUNI		Reimbursable #: NO
City: VISALIA	ST: CA	GPS #:	Estimated Chart Date: 01/30/2020		FICO #:	
Fac ID: N/A		Fac. Type:		Specialist: LEO PALMER		
Procedure Review						
	Rec'd	Rel'd	Full Name	Comments		
Lead:	08/19/2019	10/07/2019	DAVID DANNER	 <i>Digitally signed by</i>		
QA:	10/07/2019	10/23/2019	TRACEY STILES	 GEORGETTE P BARNETT		
Liaison:				 Nov 26, 2019		
Procedure Comments: ENROUTE-NON Remark Type: INFORMATION						
ALL REFERENCES TO HOTLI/I-VIS 7.22 DME CHANGED TO HOTLI/VIS 7.22 DME. CANCELS T-NOTAMS: 9/3940, 9/3610 PROCESSED IAW AIRCRAFT OPERATIONS GROUP (AJW-33) MEMO, OCTOBER 3, 2018, SUBJECT: FLIGHT INSPECTION REVIEW NOT REQUIRED. CONTACT DAVE DANNER: (405)954-5077 11/25/19: THIS IS A CORRECTED COPY OF THE FORM APPROVED ON 10/22/19. 1. CHANGED FINAL FACILITY ON 8260-3 FROM VIS TO I-VIS. 2. ADDED PRIMARY MISSED HOLDING "HOLD E, RT, 286.70 INBOUND" TO ADDITIONAL FLIGHT DATA.						

LOC I-VIS

108.5

APP CRS

301°

Rwy Idg

5635

TDZE

295

Apt Elev

295

OLD

ILS or LOC RWY 30

VISALIA MUNI (VIS)

DME required.

▼

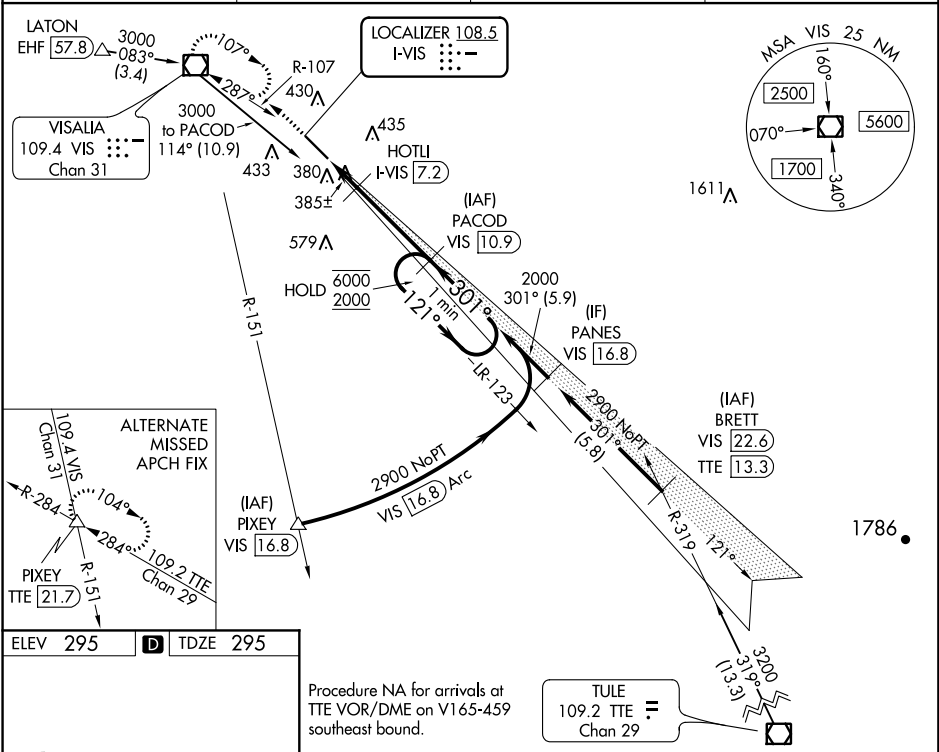
▲

DME from VIS VOR/DME.
Simultaneous reception of I-VIS and VIS DME required.
For inop ALS, increase S-LOC 30 Cat C/D visibility to 1 SM.

MALSR

MISSED APPROACH: Climb to 1000 then climbing left turn to 3000 direct VIS VOR/DME and hold, continue climb-in-hold to 3000.

AWOS-3PT 119.925	FRESNO APP CON 118.5	CLNC DEL 118.5	UNICOM 123.05 (CTAF) 0
---------------------	-------------------------	-------------------	---------------------------



ELEV 295

D

TDZE 295

Procedure NA for arrivals at TTE VOR/DME on V165-459 southeast bound.

TULE

109.2 TTE

Chan 29

1000

3000

VIS

HOTLI

I-VIS 7.2

PACOD

VIS 10.9

One Minute Holding Pattern

*LOC only.

*VIS 6.7

VIS 5.8

820*

0.9 NM

0.6 NM

3.7 NM

121°

301°

2000

6000

2000

GS 3.00°

TCH 53

CATEGORY	A	B	C	D
S-ILS 30	502-½		207 (300-½)	
S-LOC 30	640-½	345 (400-½)	640-⅝	345 (400-⅝)
CIRCLING	720-1 425 (500-1)	760-1 465 (500-1)	760-1½ 465 (500-1½)	940-2 645 (700-2)

REIL Rwy 12 0

HIRL Rwy 12-30 0