
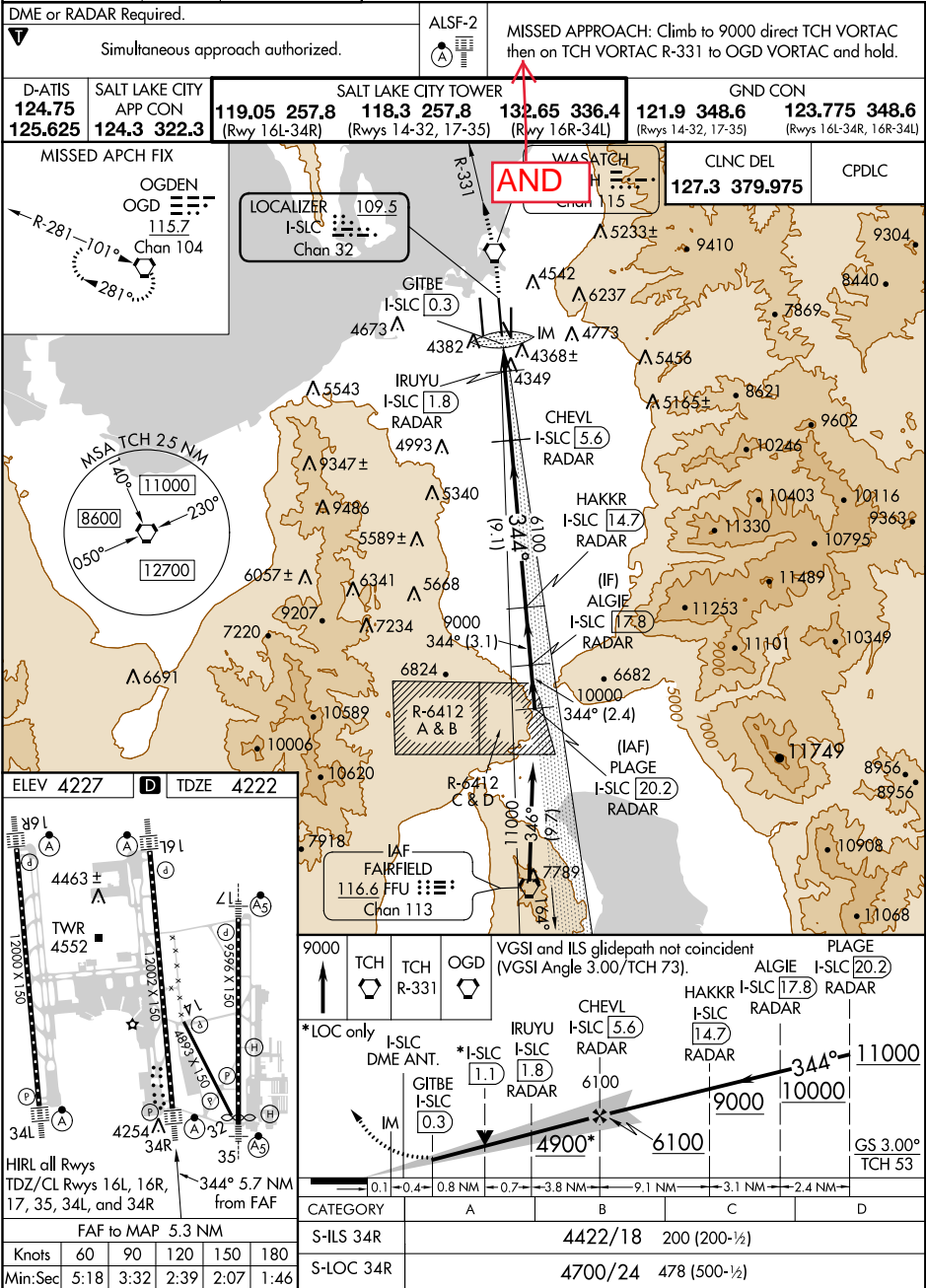


Flight Procedure Tracking Form		Action: AMENDMENT	Task Type: IAP	Date Open: 05/24/2019	Task #: 2019052428164501001	Request #: 20190524281645
Procedure: APPROACH ILS OR LOC RWY 34 R AMDT 4D			Airport ID: KSLC	Airport: SALT LAKE CITY INTL		Reimbursable #: NO
City: SALT LAKE CITY	ST: UT	GPS #:	Estimated Chart Date: 07/18/2019		FICO #:	
Fac ID: N/A		Fac. Type:		Specialist: DAVID DOWLING		
Procedure Review						
	Rec'd	Rel'd	Full Name	Comments		
Lead:	05/24/2019			<div style="text-align: center;">  </div> <i>Digitally signed by</i>		
QA:				MARK D ADAMS		
Liaison:				May 31, 2019		
Procedure Comments: ENROUTE-NON Remark Type: INFORMATION P-NOTAM. PROCESSED IAW AIRCRAFT OPERATIONS GROUP (AJW-33) MEMO, OCTOBER 3, 2018, SUBJECT: FLIGHT INSPECTION REVIEW NOT REQUIRED. MANAGER CONTACTS: MARK ADAMS, AJV-A412, (405) 954-9946; JULIE MORGAN, AJV-A410, (405) 954-8568.						

LOC/DME I-SLC	APP CRS	Rwy Idg	12002
109.5	344°	TDZE	4222
Chan 32		Apt Elev	4227

ILS or LOC RWY 34R
SALT LAKE CITY INTL (SLC)

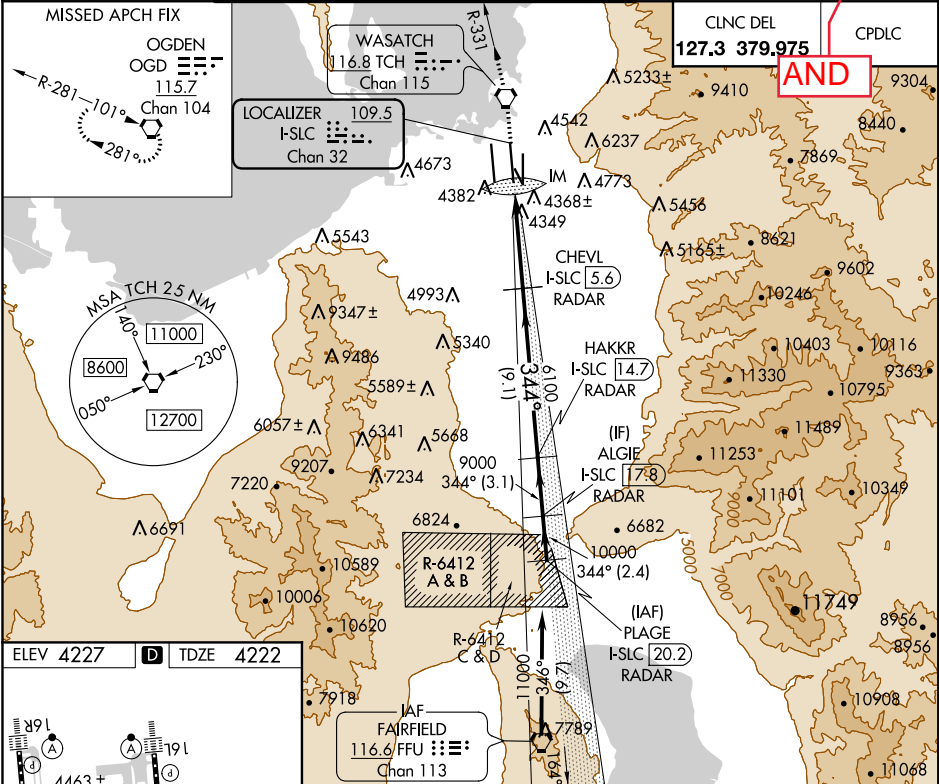


LOC/DME I-SLC 109.5 Chan 32	APP CRS 344°	Rwy Idg 12002 TDZE 4222 Apt Elev 4227
---	------------------------	--

ILS RWY 34R (SA CAT I)
SALT LAKE CITY INTL (SLC)

DME or RADAR Required.	ALSF-2 	MISSED APPROACH: Climb to 9000 direct TCH VORTAC then on TCH VORTAC R-331 to OGD VORTAC and hold.
Simultaneous approach authorized. Requires specific OPSPEC, MSPEC, or LOA approval and use of HUD to DH.		

D-ATIS 124.75 125.625	SALT LAKE CITY APP CON 124.3 322.3	SALT LAKE CITY TOWER 119.05 257.8 118.3 257.8 132.65 336.4 (Rwy 16L-34R) (Rwys 14-32, 17-35) (Rwy 16R-34L)	GND CON 121.9 348.6 123.775 348.6 (Rwys 14-32, 17-35) (Rwys 16L-34R, 16R-34L)
---	--	--	---



ELEV 4227	D	TDZE 4222
HIRL all Rwys TDZ/CL Rwys 16L, 16R, 17, 35, 34L, and 34R		
SA CATEGORY I ILS - SPECIAL AIRCREW & AIRCRAFT CERTIFICATION REQUIRED		

LOC/DME I-SLC	APP CRS	Rwy Idg	12002
109.5	344°	TDZE	4222
Chan 32		Apt Elev	4227

ILS RWY 34R (CAT II & III)
SALT LAKE CITY INTL (SLC)

DME or RADAR Required.

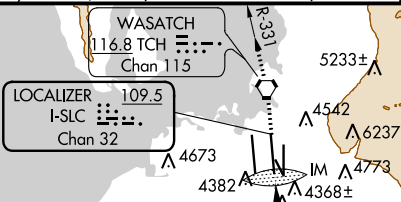
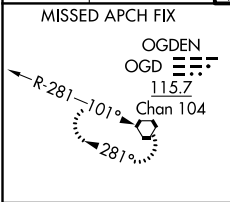
Simultaneous approach authorized.
CAT II: RVR 1000 authorized with specific OPSPEC, MSPEC,
or LOA approval and use of autoland or HUD to touchdown.

ALSF-2

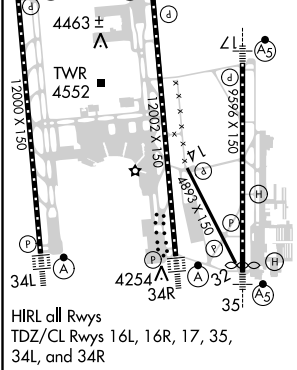
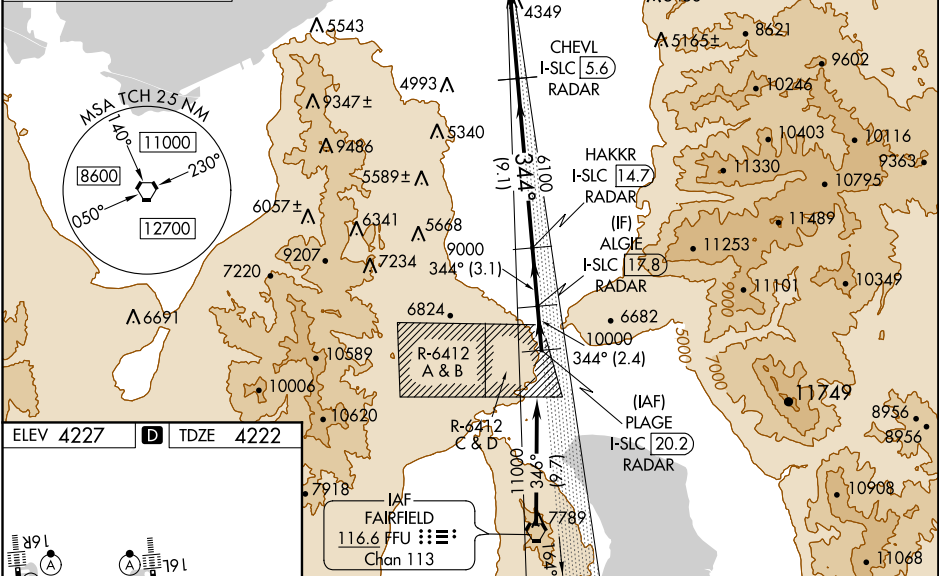


MISSED APPROACH: Climb to 9000
direct TCH VORTAC then on TCH VORTAC
R-331 to OGD VORTAC and hold.

D-ATIS	SALT LAKE CITY	SALT LAKE CITY TOWER			
124.75	APP CON	119.05 257.8	118.3 257.8	132.65 336.4	121.9 348
125.625	124.3 322.3	(Rwy 16L-34R)	(Rwys 14-32, 17-35)	(Rwy 16R-34L)	(Rwys 14-32, 17-35)
					3.775 348.6
					(Rwys 16L-34R, 16R-34L)



CLNC DEL	CPDLC
127.3 379.975	



9000	TCH	TCH R-331	OGD	VGS and ILS glidepath not coincident (VGS Angle 3.00/TCH 73).	PLAGE I-SLC [20.2] RADAR
				CHEVL I-SLC [5.6] RADAR	HAKKR I-SLC [14.7] RADAR
				ALGIE I-SLC [17.8] RADAR	
				IM 4316	9000 10000
				6100	GS 3.00° TCH 53
				1047	5.7 NM
				9.1 NM	3.1 NM
				2.4 NM	
CATEGORY	A	B	C	D	
S-ILS 34R		CAT II RA 100/12 100 DA 4322			
S-ILS 34R		CAT III RVR 03			

CATEGORY II & III ILS - SPECIAL AIRCREW
& AIRCRAFT CERTIFICATION REQUIRED