

Flight Procedures Cover Page	Task Action: Amendment	Task Type: IAP	Estimated Chart Date: 01/30/2020	APWS Task ID: 5699E6B3B41A47D5B0B485DDD8AAF1A9	APWS Request ID: 016B9F0AE11C4ED09925E5A17CBA3BE1
Procedure: VOR RWY 5 AMDT 10A		Enroute: NO	Specialist: Lemon, Gordon		Agreement Number:
Airport ID: KSBY	Airport Name: SALISBURY-OCEAN CITY WICOMICO RGNL		Airport City: SALISBURY		State: MD
Facility ID: SBY	Facility Type: VORTAC	Flight Inspection Remark Type:			
<p>Procedure Comments: ACTIVE DATA USED FOR KSBY AIRPORT AND RUNWAYS. CANCEL FDC 9/2809 UPON PUBLICATION. PROCESSED IAW AIRCRAFT OPERATIONS GROUP (AJW-33) MEMO, OCTOBER 3, 2018, SUBJECT: FLIGHT INSPECTION REVIEW NOT REQUIRED CONTACT: WARDELL HENNING: 405.954.9954.</p> <p style="text-align: right;"><i>Digitally signed by</i> WARDELL HENNING Dec 20, 2019</p> <p>12/19/2019: THIS IS A CORRECTED COPY OF THE FORM APPROVED ON: 10/21/2019: 1. REMOVED * FROM "OMSIE/2.50 DME 580*" PROFILE LINE 4. 2. ADDED "SM" TO "CHART NOTE: RWY 5 HELICOPTER VISIBILITY REDUCTION BELOW 3/4 NOT AUTHORIZED." 3. DELETED CHANGES - REASONS 7. ADDED CHART NOTE: VDP NA WHEN USING GEORGETOWN ALTIMETER SETTING - VDP WAS ADDED, NO 20:1 PENETRATIONS, REFLECTS CURRENT CRITERIA 8260.19H 8-6-9 E. PGH (9). 4. DELETED CHANGES - REASONS 9. ADDED ADDITIONAL FLIGHT DATA "CHART TDZE 47" - AIRNAV DATA TDZE CHANGED FROM 48 FEET TO 47 FEET. 5. DELETED VDP DATA FROM ADDITIONAL FLIGHT DATA. 6. UPDATED CHANGES - REASONS 8 (NOW 7) REASONS.</p>					



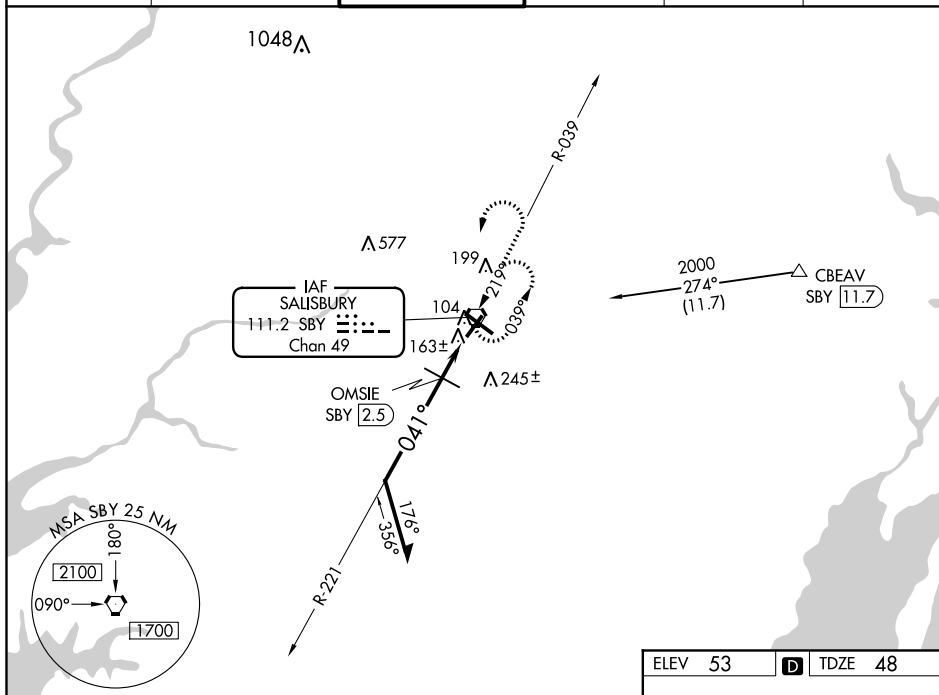
VORTAC SBY 111.2 Chan 49	APP CRS 041°	Rwy Idg 5000 TDZE 48 Apt Elev 53
--	------------------------	---

VOR RWY 5
SALISBURY-OCEAN CITY WICOMICO RGNL (SBY)

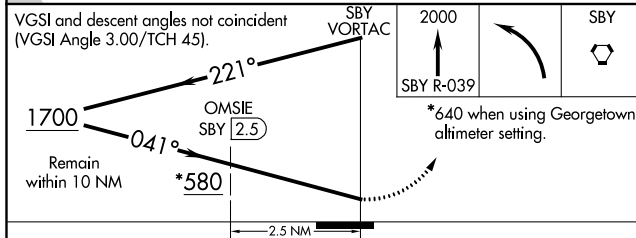
T Visibility reduction by helicopters NA. When local altimeter setting not received, use Georgetown altimeter setting and increase all MDA 60 feet: increase OMSIE Fix Minimums Cat C/D visibility ¼ mile.

MISSED APPROACH: Climb to 2000 on SBY VORTAC R-039 then left turn direct SBY VORTAC and hold.

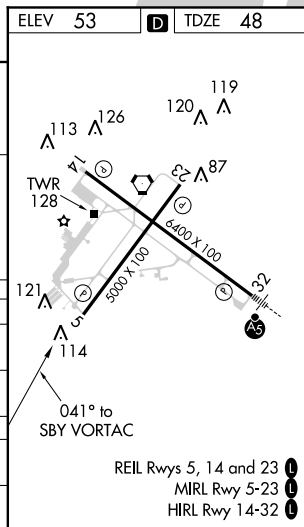
ASOS 118.325	PATUXENT APP CON ★ 127.95 314.0	SALISBURY TOWER ★ 119.425 (CTAF) 0	GND CON 123.775	CLNL DEL ★ 123.775	UNICOM 122.95
------------------------	---	---	---------------------------	------------------------------	-------------------------



VGSI and descent angles not coincident
(VGSI Angle 3.00/TCH 45).



CATEGORY	A	B	C	D
S-5	580-1	532 (600-1)	580-1½ 532 (600-1½)	580-1¾ 532 (600-1¾)
CIRCLING	580-1	527 (600-1)	580-1½ 527 (600-1½)	620-2 567 (600-2)
OMSIÉ FIX MINIMUMS				
S-5	420-1 372 (400-1)			420-1¼ 372 (400-1¼)
CIRCLING	480-1 427 (500-1)	520-1 467 (500-1)	520-1½ 467 (500-1½)	620-2 567 (600-2)



SALISBURY, MARYLAND

Amdt 10 13JAN11

SALISBURY-OCEAN CITY WICOMICO RGNL (SBY)

38°20'N - 75°31'W

VOR RWY 5

NE-3, 15 AUG 2019 to 12 SEP 2019

NE-3, 15 AUG 2019 to 12 SEP 2019

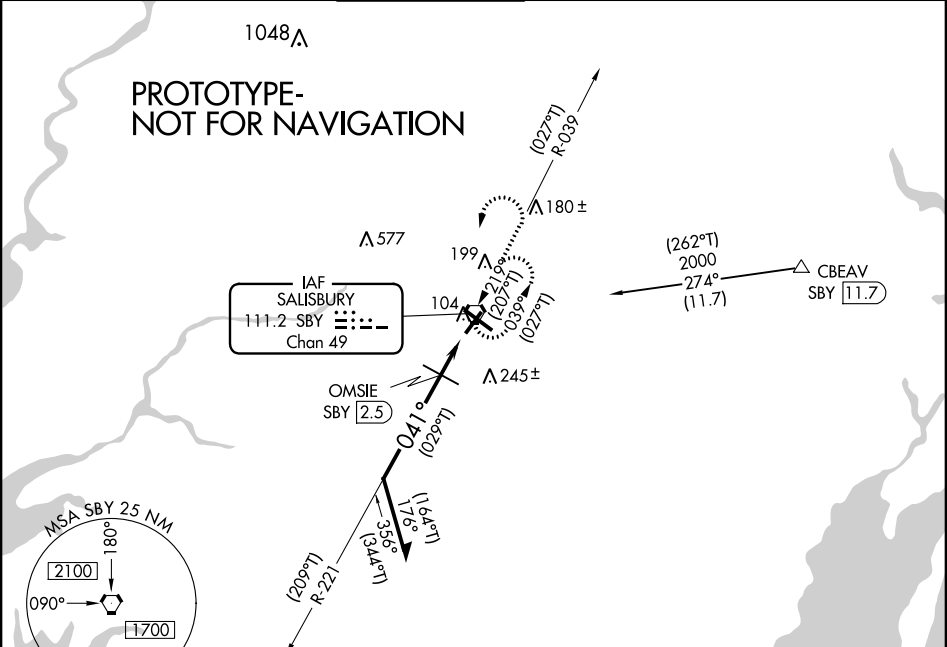
VORTAC SBY	APP CRS	Rwy Idg	5000
111.2	041°	TDZE	47
Chan 49		Apt Elev	53

VOR RWY 5
SALISBURY-OCEAN CITY WICOMICO RGNL (SBY)

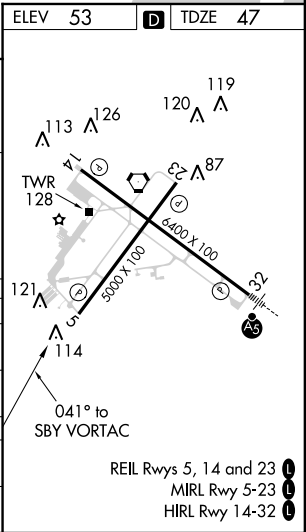
⚠ Rwy 5 helicopter visibility reduction below 3/4 SM NA.

MISSED APPROACH: Climb to 2000 on SBY VORTAC R-039 then left turn direct SBY VORTAC and hold.

ASOS 118.325	PATUXENT APP CON ★ 127.95 314.0	SALISBURY TOWER ★ 119.425 (CTAF) 0	GND CON 123.775	CLNL DEL ★ 123.775	UNICOM 122.95
-----------------	------------------------------------	--	--------------------	-----------------------	------------------



CATEGORY	A	B	C	D
S-5	580-1	533 (600-1)	580-1½ 533 (600-1½)	580-1¾ 533 (600-1¾)
C CIRCLING	580-1	527 (600-1)	580-1½ 527 (600-1½)	700-2 647 (700-2)
OMSIE FIX MINIMUMS				
S-5	440-1	393 (400-1)	440-1½ 393 (400-1½)	440-1¾ 393 (400-1¾)
C CIRCLING	480-1 427 (500-1)	520-1 467 (500-1)	560-1½ 507 (600-1½)	700-2 647 (700-2)



PROC: VOR RWY 5, AMDT 10A
CITY/STATE: SALISBURG, MD
APT NAME/ID: SALISBURY-OCEAN CITY WICOMICO RGNL (KSBY)
1:100K VOR FINAL
3. FINAL PT 264 AAO
4. FINAL STEPDOWN & CAT A 180 TREE (24-041220)

