


Flight Procedure Tracking Form		Action: FLIGHT CHECK	Task Type: IAP	Date Open: 04/30/2019	Task #: 2019043033876205002	Request #: 20190430338762
Procedure: ILS OR LOC RWY 7 AMDT 29			Airport ID: KTOL	Airport: TOLEDO EXPRESS		Reimbursable #: NO
City: TOLEDO	ST: OH	GPS #:	Estimated Chart Date: 01/30/2020		FICO #:	
Fac ID: TOL		Fac. Type: ILS			Specialist: TOMMY BYRNS	
Procedure Review						
	Rec'd	Rel'd	Full Name	Comments		
Lead:	07/25/2019	09/25/2019	ALLAN WILL			
QA:	09/25/2019			10/31/2019		
Liaison:						
Procedure Comments: ENROUTE-NON Remark Type: INFORMATION VORMON PROJECT, VWV DECOMMISSION. ACTIVE AIRPORT DATA USED. I-TOL ACTIVE DATA USED. TOPHR LOM PENDING DATA USED. WATERVILLE VOR/DME PENDING DATA USED. ADDED NEW PRIMARY MISSED APPROACH: RNAV 1-GPS REQUIRED. CONTACT ALLAN WILL, 405-954-6103.						

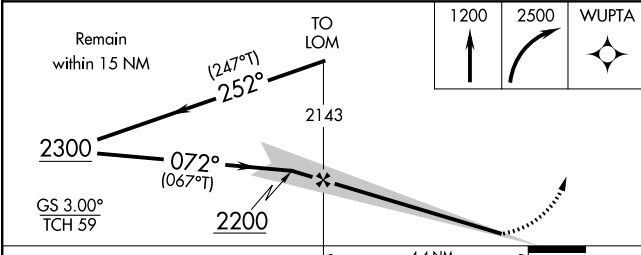
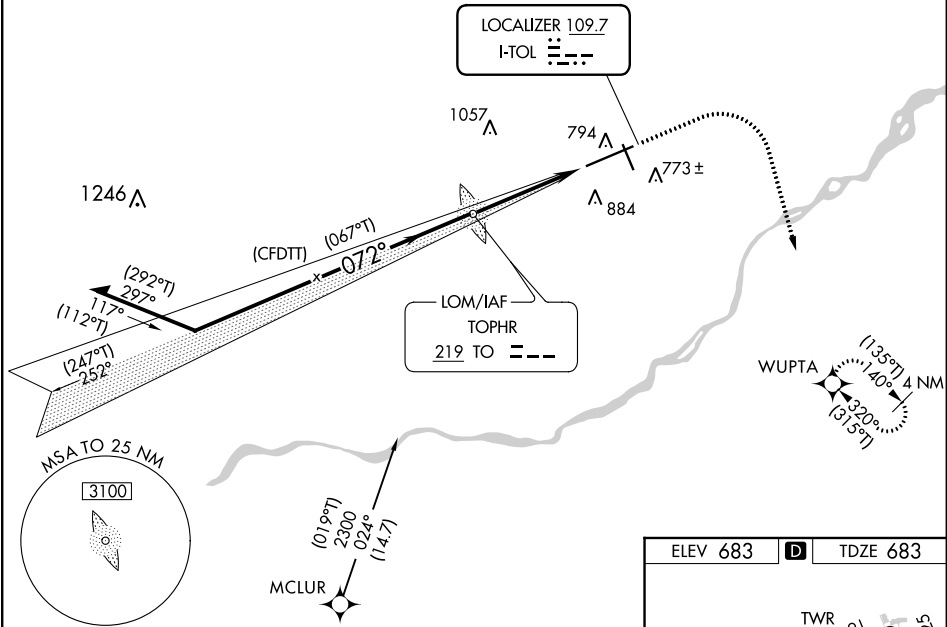
QUALITY
25
CHECKED

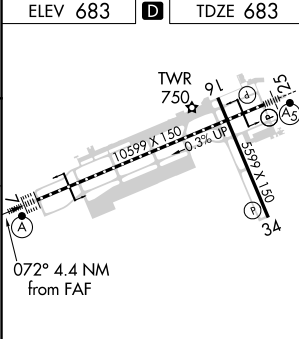
LOC I-TOL 109.7	APP CRS 072°	Rwy Idg 10599 TDZE 683 Apt Elev 683
---------------------------	------------------------	--

ILS or LOC RWY 7
TOLEDO EXPRESS (TOL)

ADF or RADAR required for procedure entry. RNAV 1-GPS required ADF required for LOC only			ALSIF-2 	MISSED APPROACH: Climb to 1200 then climbing right turn to 2500 direct WUPTA and hold.	
For inop ALS, increase S-ILS 7 Cat E visibility to RVR 4000, S-LOC 7 Cat E visibility to 1½ SM.					
ATIS 118.75 290.225		TOLEDO APP CON 134.35 317.55	TOLEDO TOWER 118.1 285.4	GND CON 121.9 348.6	CLNC DEL 121.75 348.6

PROTOTYPE-NOT FOR NAVIGATION



ELEV 683	D	TDZE 683
		
072° 4.4 NM from FAF		
TDZ/CL Rwy 7 HIRL Rwy 7-25 MIRL Rwy 16-34 REIL Rwy 16 and 34		
FAF to MAP 4.4 NM		
Knots	60	90 120 150 180
Min:Sec	4:24	2:56 2:12 1:46 1:28

TOLEDO, OHIO

AL-184 (FAA)

19171

LOC I-TOL 109.7	APP CRS 072°	Rwy Idg 10599 TDZE 683 Apt Elev 683
---------------------------	------------------------	--

OLD

ILS or LOC RWY 7

TOLEDO EXPRESS (TOL)

RADAR required for procedure entry, ADF or RADAR required.

For inop ALS, increase S-ILS 7 Cat E visibility to RVR 4000,
S-LOC 7 Cat E visibility to RVR 6000.

ALSIF-2



MISSED APPROACH: Climb to 2500 then
right turn direct VVV VOR/DME and hold.

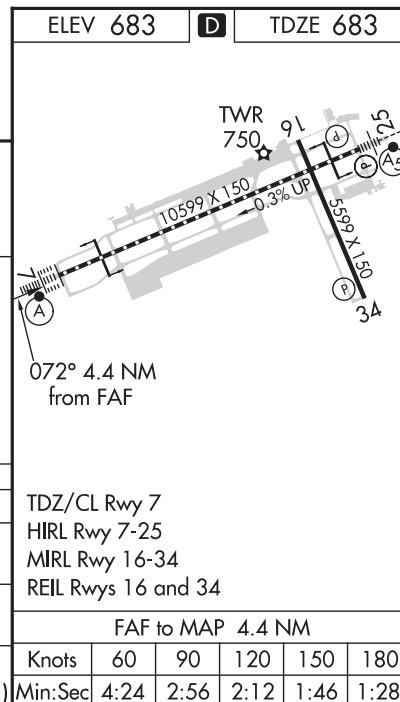
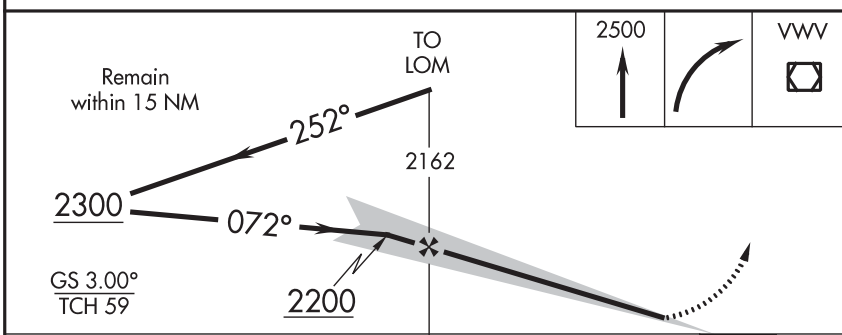
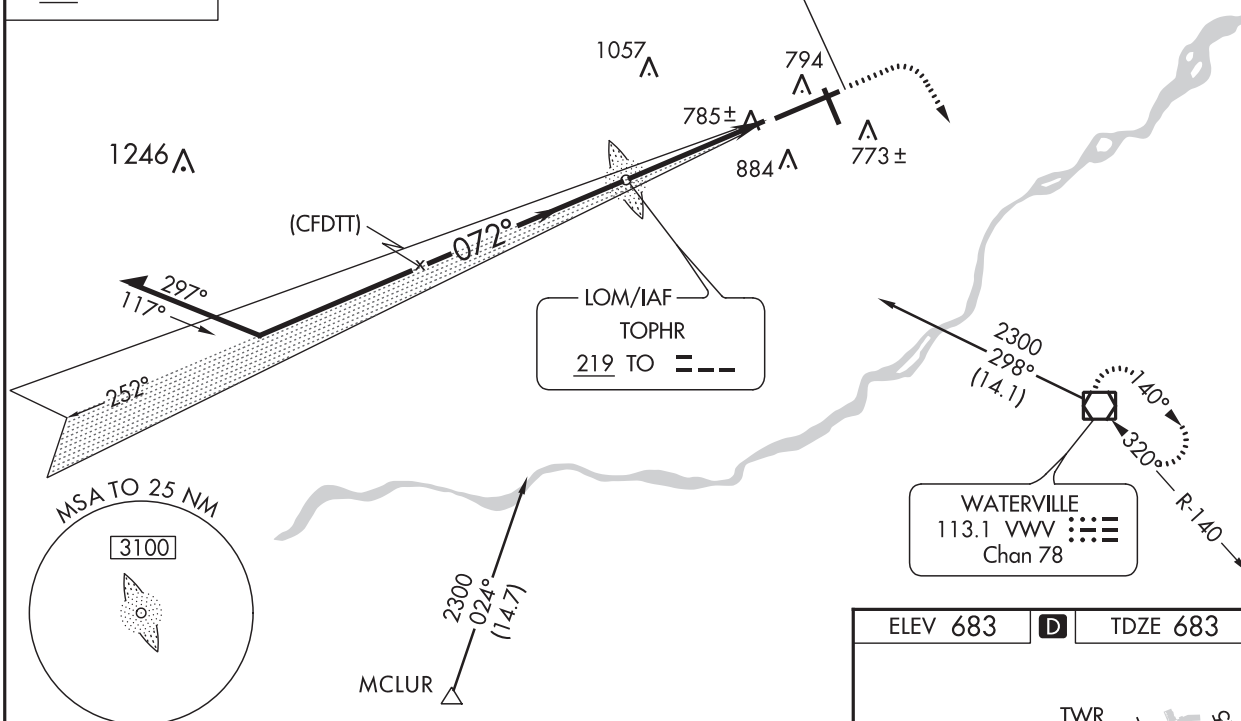
ATIS
118.75 290.225

TOLEDO APP CON
134.35 317.55

TOLEDO TOWER
118.1 285.4

GND CON
121.9 348.6

CLNC DEL
121.75 348.6

ALTERNATE MISSED
APCH FIX

CATEGORY	A	B	C	D	E
S-ILS 7	883/18 200 (200-½)				
S-LOC 7	1080/24 397 (400-½)		1080/40 397 (400-¾)	1080/50 397 (400-1)	
CIRCLING	1200-1 517 (600-1)	1360-2 677 (700-1)	1400-2¼ 717 (800-2¼)	1400-2½ 717 (800-2½)	

TDZ/CL Rwy 7					
HIRL Rwy 7-25					
MIRL Rwy 16-34					
REIL Rwy 16 and 34					
FAF to MAP 4.4 NM					
Knots	60	90	120	150	180
Min:Sec	4:24	2:56	2:12	1:46	1:28

TOLEDO, OHIO

Amdt 28A 24MAY18

41°35'N-83°48'W

TOLEDO EXPRESS (TOL)

ILS or LOC RWY 7

EC-2, 12 SEP 2019 to 10 OCT 2019

EC-2, 12 SEP 2019 to 10 OCT 2019

**KTOL
TOLEDO EXPRESS
TOLEDO, OH
ILS OR LOC RWY 7, AMDT 29
1:500,000**

6.
1246' TOWER (1246)
(39-001692)

5.
885' AAO

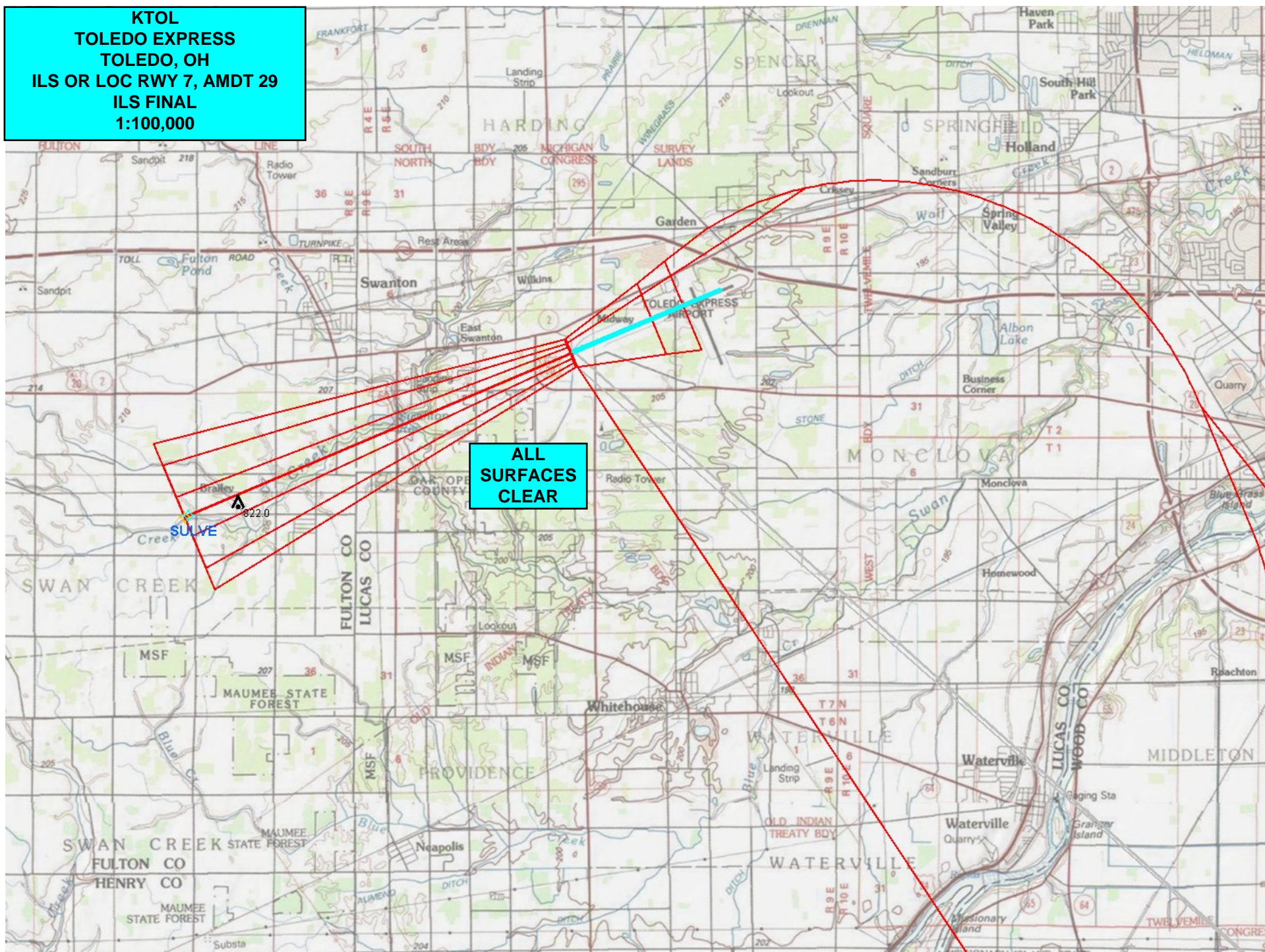
8.
1050' TOWER
(39-001311)

3.
1092' TOWER
(39-000579)

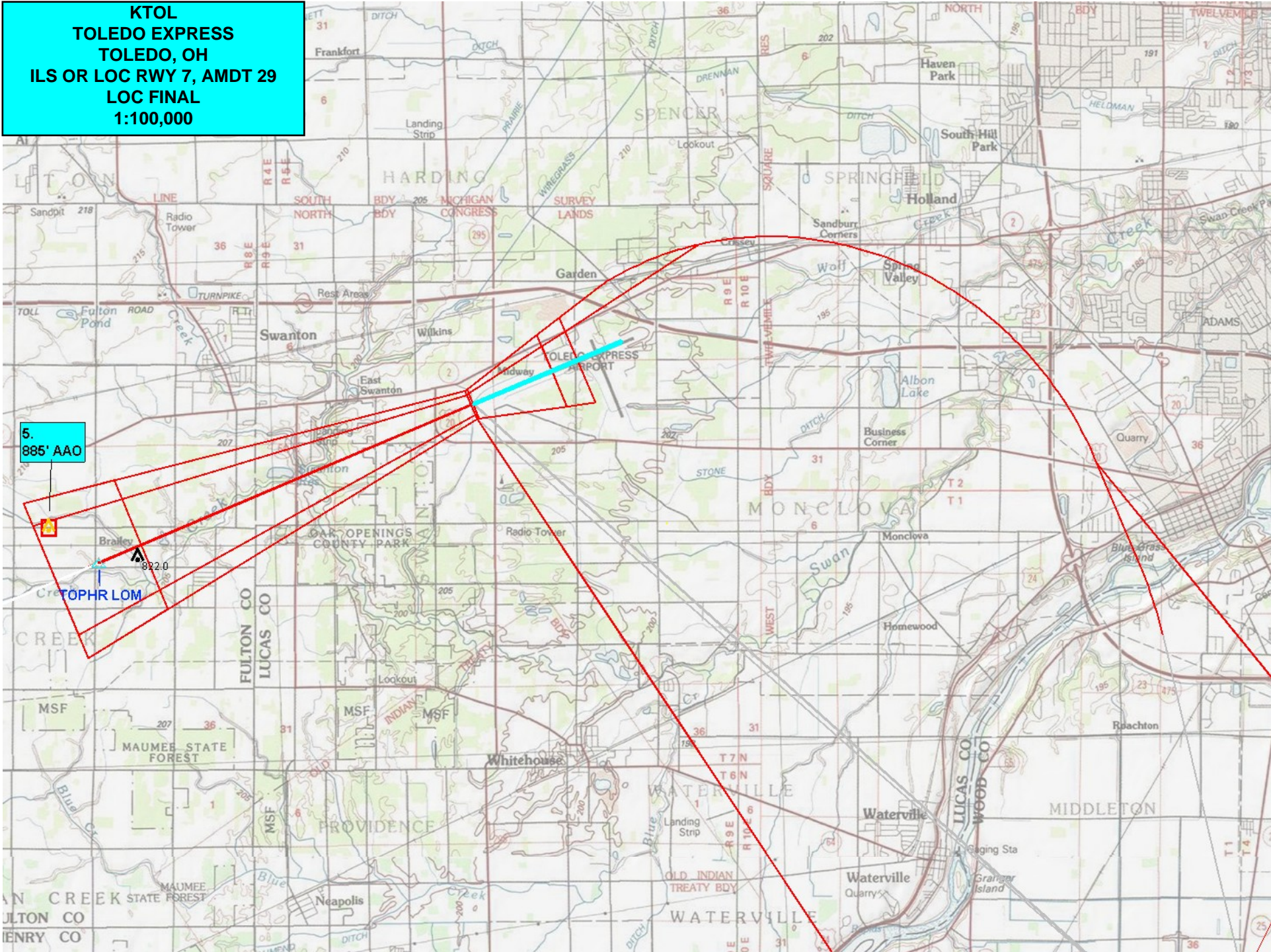
1.
1026' TOWER
(39-003740)

KTOL
TOLEDO EXPRESS
TOLEDO, OH
ILS OR LOC RWY 7, AMDT 29
ILS FINAL
1:100,000

ALL
SURFACES
CLEAR



**KTOL
TOLEDO EXPRESS
TOLEDO, OH
ILS OR LOC RWY 7, AMDT 29
LOC FINAL
1:100,000**



**KTOL
TOLEDO EXPRESS
TOLEDO, OH
ILS OR LOC RWY 7, AMDT 29
CIRCLING
1:100,000**

