

Flight Procedure Tracking Form		Action: AMENDMENT	Task Type: IAP	Date Open: 04/20/2019	Task #: 2019042019975801002	Request #: 20190420199758
Procedure: RNAV (GPS) RWY 21 AMDT 1A			Airport ID: KBRY	Airport: SAMUELS FIELD		Reimbursable #: NO
City: BARDSTOWN	ST: KY	GPS #:	Estimated Chart Date: 10/10/2019		FICO #:	
Fac ID: N/A		Fac. Type:		Specialist: TODD BOWLING		
Procedure Review						
	Rec'd	Rel'd	Full Name	Comments		
Lead:	04/20/2019	07/10/2019	WARDELL HENNING	Digitally signed by		
QA:	07/10/2019	07/25/2019	ANDI LAU	WARDELL HENNING		
Liaison:				Aug 08, 2019		
Procedure Comments: ENROUTE-NON Remark Type: INFORMATION PROCEDURE BUILT USING ACTIVE DATA. PROCESSED IAW AIRCRAFT OPERATIONS GROUP (AJW-33) MEMO, OCTOBER 3, 2018, SUBJECT: FLIGHT INSPECTION REVIEW NOT REQUIRED. CONTACT: WARDELL HENNING: 405.954.9954 08/07/2019: THIS IS A CORRECTED COPY OF THE FORM APPROVED ON: 07/24/2019: 1. ADDED "ROUTINE" TO REQUIRED EFFECTIVE DATE.						

QUALITY
18
CHECKED

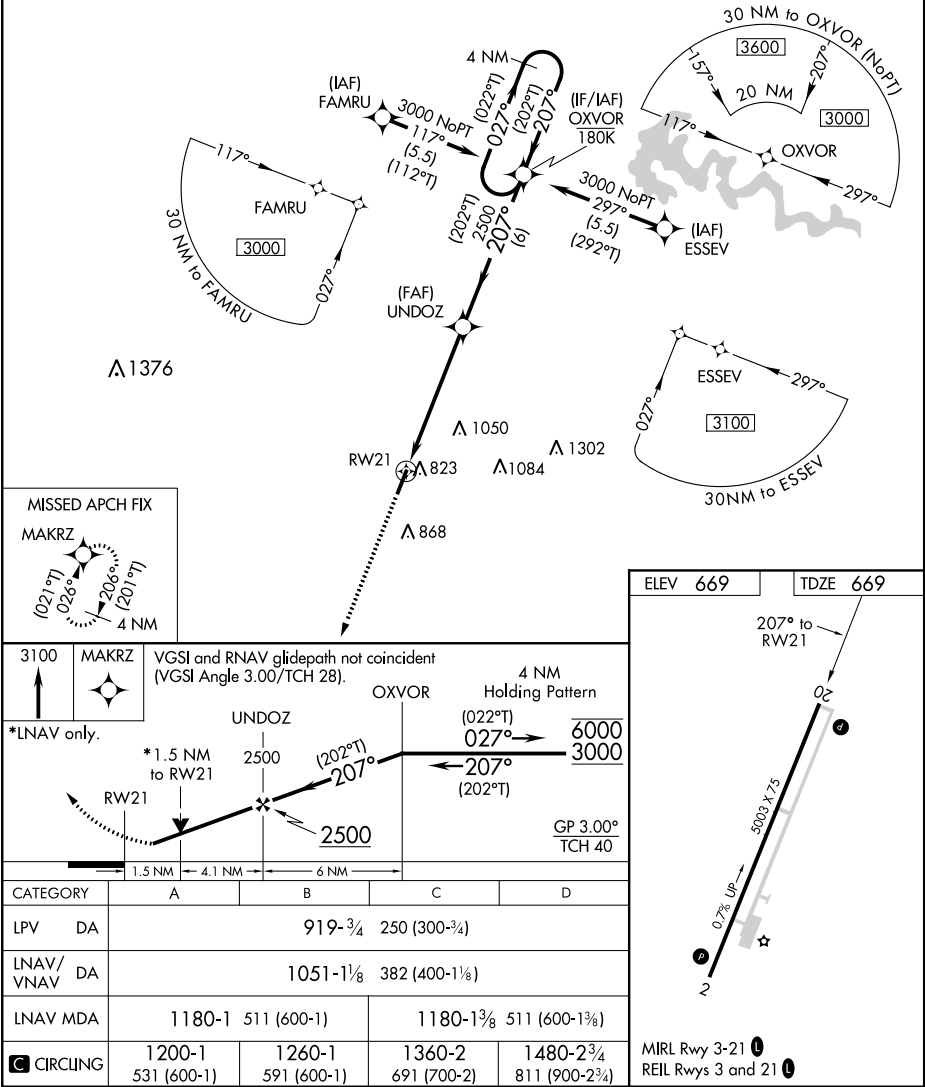
WAAS CH 77816 W21A	APP CRS 207°	Rwy Idg 5003 TDZE 669 Apt Elev 669
--	------------------------	---

RNAV (GPS) RWY 21

SAMUELS FIELD (BRY)

RNP APCH. ▼ Rwy 21 helicopter visibility reduction below 3/4 SM NA. ▲ For uncompensated Baro-VNAV systems, LNAV/VNAV NA below -16°C or above 54°C.		MISSED APPROACH: Climb to 3100 direct MAKRZ and hold.
AWOS-3 119.925	LOUISVILLE APP CON 132.075 327.0	UNICOM 122.8 (CTAF) 0

PROTOTYPE-NOT FOR NAVIGATION



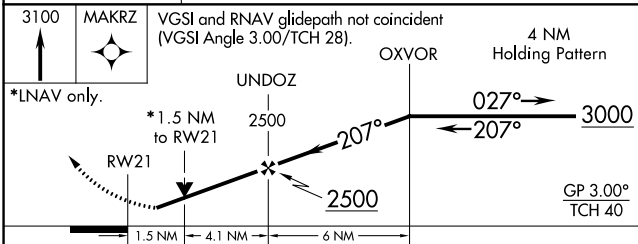
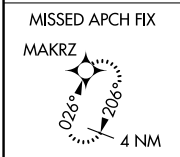
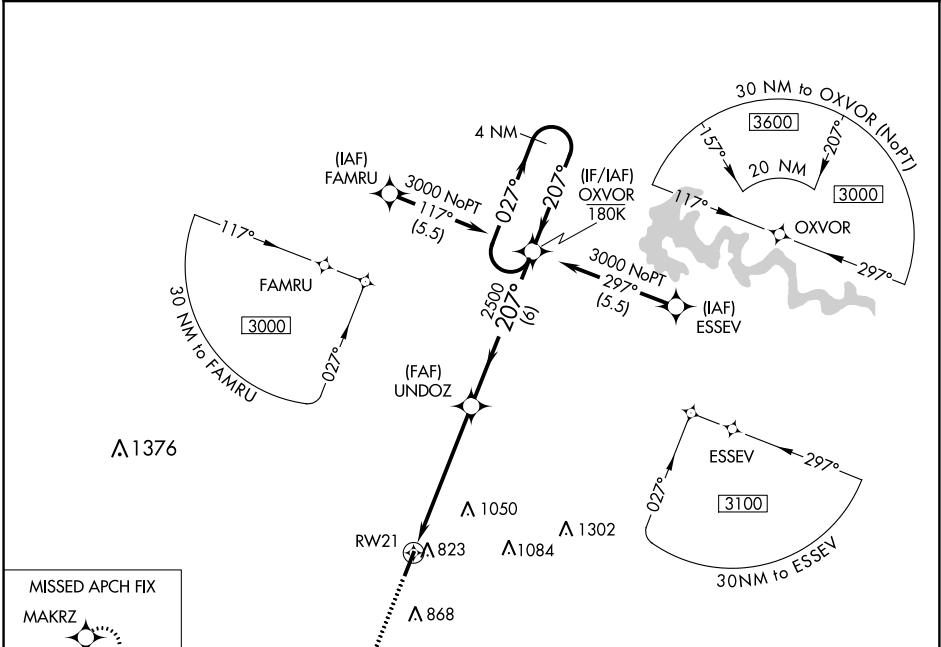
WAAS CH 77816 W21A	APP CRS 207°	Rwy Idg TDZE 669 Apt Elev 669
--	------------------------	---

OLD

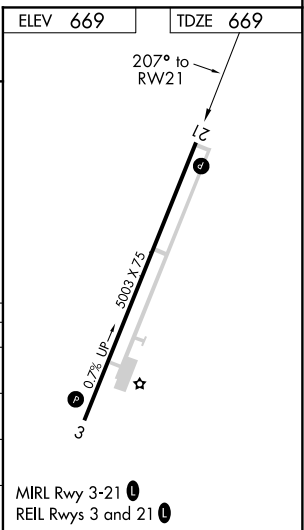
RNAV (GPS) RWY 21
SAMUELS FIELD (BRY)

<p>▼ For uncompensated Baro-VNAV systems, LNAV/VNAV NA below -16°C (4°F) or above 54°C (130°F). Circling Rwy 3 NA at night. ▲ Rwy 21 helicopter visibility reduction below ¾ SM NA. DME/DME RNP-0.3 NA.</p>	<p>MISSED APPROACH: Climb to 3100 direct MAKRZ and hold.</p>
---	--

AWOS-3 119.925	LOUISVILLE APP CON 132.075 327.0	UNICOM 122.8 (CTAF) 0
--------------------------	--	---------------------------------



CATEGORY	A	B	C	D
LPV DA	919-3/4	250 (300-3/4)		
LNAV/VNAV DA	1051-1 1/8	382 (400-1 1/8)		
LNAV MDA	1180-1	511 (600-1)	1180-1 3/8	511 (600-1 3/8)
C CIRCLING	1200-1 531 (600-1)	1260-1 591 (600-1)	1360-2 691 (700-2)	1480-2 3/4 811 (900-2 3/4)



OLD

SAMUELS FIELD (BRY)
RNAV (GPS) RWY 21

SE-1, 23 MAY 2019 to 20 JUN 2019

SE-1, 23 MAY 2019 to 20 JUN 2019