

Flight Procedure Tracking Form		Action: AMENDMENT	Task Type: IAP	Date Open: 04/20/2019	Task #: 2019042019975801001	Request #: 20190420199758
Procedure: RNAV (GPS) RWY 3 AMDT 1A			Airport ID: KBRY	Airport: SAMUELS FIELD		Reimbursable #: NO
City: BARDSTOWN	ST: KY	GPS #:	Estimated Chart Date: 10/10/2019		FICO #:	
Fac ID: N/A		Fac. Type:		Specialist: TODD BOWLING		
Procedure Review						
	Rec'd	Rel'd	Full Name	Comments		
Lead:	04/20/2019			<div> <div>QUALITY</div> <div>22</div> <div>CHECKED</div> </div> <div> 7.11.2019 BD </div> <div> Digitally signed by WARDELL HENNING Jul 24, 2019 </div> <div> <div>QUALITY</div> <div>26</div> <div>CHECKED</div> </div>		
QA:						
Liaison:						
Procedure Comments: ENROUTE-NON Remark Type: INFORMATION PROCEDURE BUILT USING ACTIVE DATA. PROCESSED IAW AIRCRAFT OPERATIONS GROUP (AJW-33) MEMO, OCTOBER 3, 2018, SUBJECT: FLIGHT INSPECTION REVIEW NOT REQUIRED. CONTACT: WARDELL HENNING: 405.954.9954						

BARDSTOWN, KENTUCKY

AL-5539 (FAA)

FIG

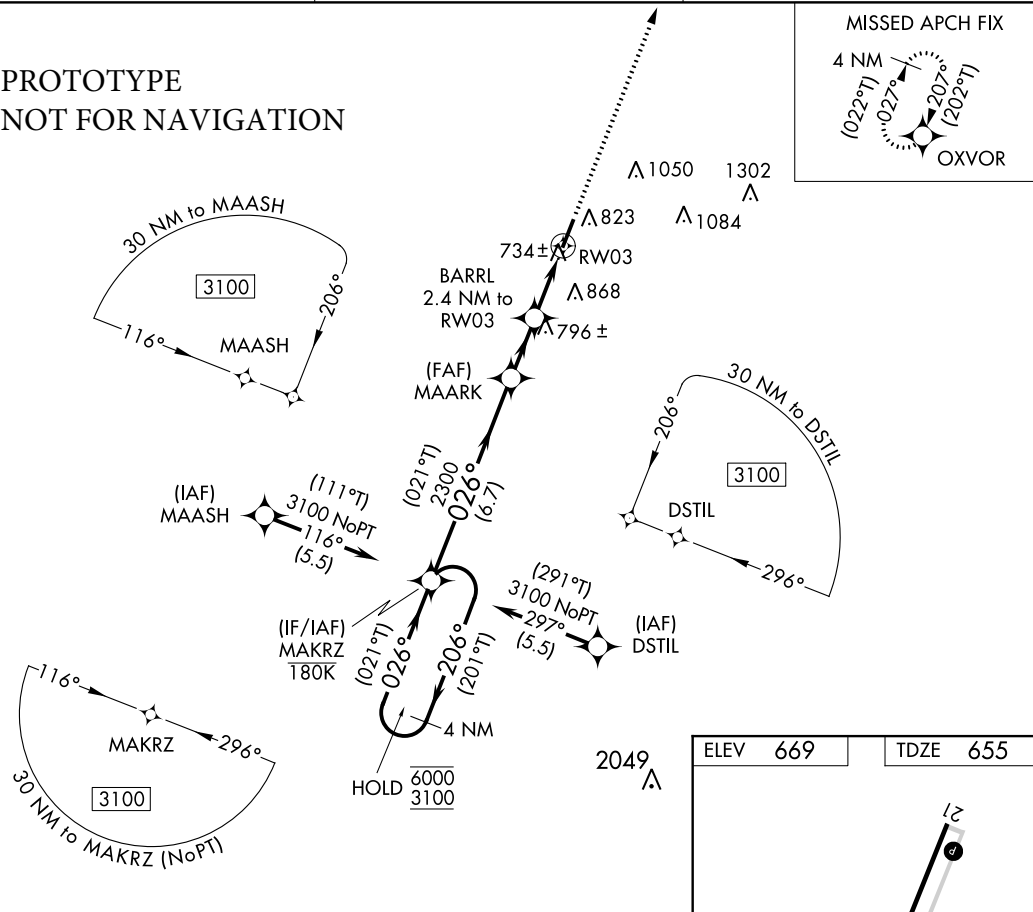
APP CRS	Rwy Idg	5003
026°	TDZE	655
	Apt Elev	669

RNAV (GPS) RWY 3

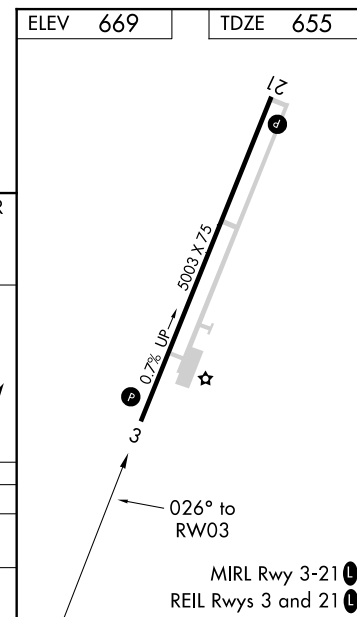
SAMUELS FIELD (BRY)

RNP APCH.		MISSED APPROACH: Climb to 3000 direct OXVOR and hold.
<div><div>▼</div><div>▲</div></div> <div>Rwy 3 helicopter visibility reduction below 1 SM NA.</div>		
AWOS-3 119.925	LOUISVILLE APP CON 132.075 327.0	UNICOM 122.8 (CTAF) 0

PROTOTYPE
NOT FOR NAVIGATION



4 NM Holding Pattern	MAKRZ	MAARK	BARRL	3000	OXVOR
6000	(201°T)	(021°T)	2.4 NM to RW03		
3100	206°	026°	3.50° TCH 41		
	(021°T)		0.9 NM to RW03		
CATEGORY	A	B	C	D	
LNAV MDA	1000-1	345 (400-1)			
CIRCLING	1200-1 531 (600-1)	1260-1 591 (600-1)	1360-2 691 (700-2)	1480-2¾ 811 (900-2¾)	

BARDSTOWN, KENTUCKY
Amdt 1A FIG

37°49'N-85°30'W

SAMUELS FIELD (BRY)
RNAV (GPS) RWY 3

AUTOMATED AL-5539 RNAV (GPS) RWY 3

SE-1

02/21/18

COMPILER: LS

REVIEWER:

DBL CHKR:

EFF: FIG

SE-1, 23 MAY 2019 to 20 JUN 2019