

<b>Flight Procedure Tracking Form</b>		<b>Action:</b> AMENDMENT	<b>Task Type:</b> IAP	<b>Date Open:</b> 04/10/2019	<b>Task #:</b> 2019041034841702002	<b>Request #:</b> 20190410348417
<b>Procedure:</b> RNAV (GPS) RWY 13 AMDT 2B			<b>Airport ID:</b> KOZW	<b>Airport:</b> LIVINGSTON COUNTY SPENCER J HARDY		<b>Reimbursable #:</b> NO
<b>City:</b> HOWELL	<b>ST:</b> MI	<b>GPS #:</b>	<b>Estimated Chart Date:</b> 12/05/2019		<b>FICO #:</b>	
<b>Fac ID:</b> N/A		<b>Fac. Type:</b>			<b>Specialist:</b> JAMES LAFFERTY	
<b>Procedure Review</b>						
	<b>Rec'd</b>	<b>Rel'd</b>	<b>Full Name</b>	<b>Comments</b>		
<b>Lead:</b>	06/27/2019	09/05/2019	DAVID TEFFETELLER	QUALITY Digitally signed by		
<b>QA:</b>	09/05/2019	09/11/2019	KISSY MAXFIELD	7 ROBERT G HAMILTON		
<b>Liaison:</b>				CHECKED Sep 26, 2019		
<b>Procedure Comments:</b> ENROUTE-NON <b>Remark Type:</b> INFORMATION  ACTIVE DATA USED FOR KOZW AMENDMENT. VOR MON PROJECT. PROCESSED IAW AIRCRAFT OPERATIONS GROUP (AJW-33) MEMO, OCTOBER 3, 2018, SUBJECT: FLIGHT INSPECTION REVIEW NOT REQUIRED. CONTACT DAVE TEFFETELLER AT 202-267-5177   9/25/19: THIS IS A CORRECTED COPY OF THE FORM APPROVED ON 9/11/19. 1. ADDED TO LINE 5 OF THE -3 FORM; 200 HAT: 0.48.						

WAAS CH <b>69601</b> <b>W13A</b>	APP CRS <b>132°</b>	Rwy Idg <b>5002</b> TDZE <b>962</b> Apt Elev <b>962</b>
--	------------------------	---

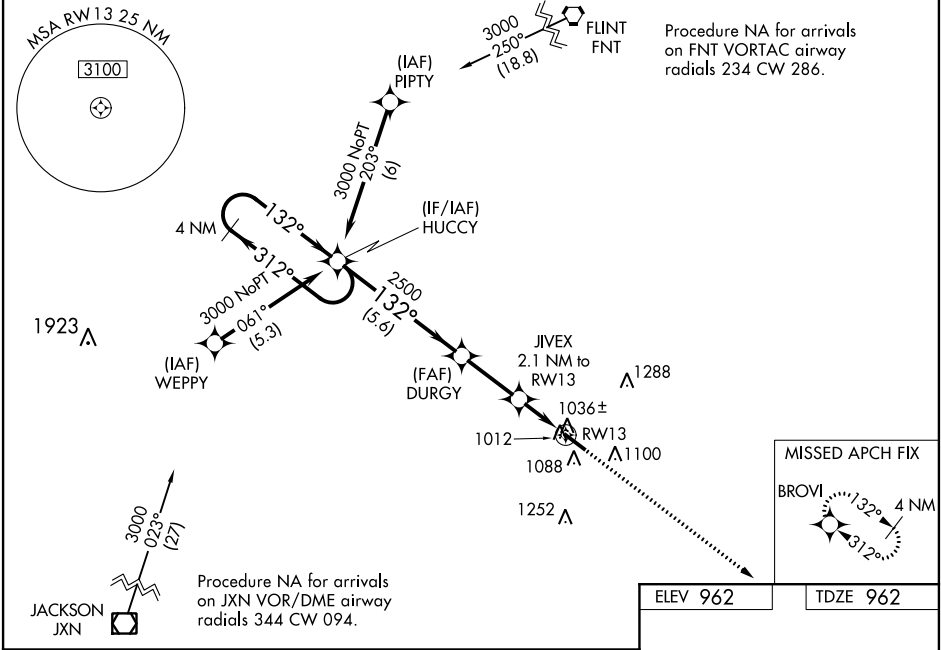
RNAV (GPS) RWY 13  
LIVINGSTON COUNTY SPENCER J HARDY (OZW)

**⚠** Baro-VNAV NA when using Flint altimeter setting. For uncompensated Baro-VNAV systems, LNAV/VNAV NA below -16°C (4°F) or above 37°C (98°F).  
DME/DME RNP-0.3 NA. VDP NA with Flint altimeter setting. When local altimeter setting not received, use Flint altimeter setting and increase all DA/MDA 80 feet, LNAV/VNAV all Cats visibility to ¾ mile and LNAV Cats C and D visibility to ¾ mile. For inoperative MALSR, increase LNAV/VNAV all Cats visibility to ¾ mile.

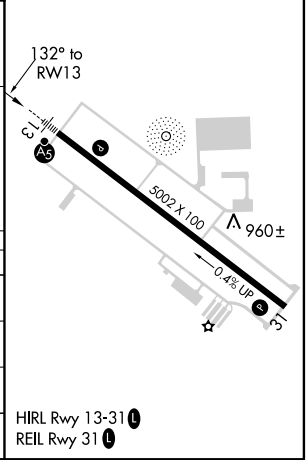
MALSR

MISSED APPROACH:  
Climb to 2800 direct BROVI and hold.

AWOS-3 <b>118.875</b>	DETROIT APP CON <b>127.5 363.2</b>	CLNC DEL <b>121.725 (GCO)</b>	UNICOM <b>123.0 (CTAF) 0</b>
--------------------------	---------------------------------------	----------------------------------	---------------------------------



4 NM Holding Pattern		HUCCY		DURGY		JIVEX 2.1 NM to RW13		2800 ↑		BROVI ✦	
3000 ← 312° 132° →		132°		2500		*1660		* LNAV only		0.9 NM to RW13	
GS 3.00° TCH 48										RW13	
		5.6 NM		2.6 NM		1.2		0.9			
CATEGORY		A		B		C				D	
LPV DA		1162-½ 200 (200-½)									
LNAV/ VNAV DA		1212-½ 250 (300-½)									
LNAV MDA		1300-½ 338 (400-½)									
CIRCLING		1400-1 438 (500-1)		1420-1 458 (500-1)		1420-1½ 458 (500-1½)		1520-2 558 (600-2)			



EC-1, 02 APR 2015 to 30 APR 2015

EC-1, 02 APR 2015 to 30 APR 2015