

Flight Procedure Tracking Form		Action: AMENDMENT	Task Type: IAP	Date Open: 04/09/2019	Task #: 2019040930800101001	Request #: 20190409308001
Procedure: NDB RWY 33 AMDT 16C			Airport ID: KLOU	Airport: BOWMAN FIELD		Reimbursable #: NO
City: LOUISVILLE	ST: KY	GPS #:	Estimated Chart Date: 08/15/2019		FICO #:	
Fac ID: LKS		Fac. Type: NDB			Specialist: ROBERT GRIM	
Procedure Review						
	Rec'd	Rel'd	Full Name	Comments		
Lead:	04/09/2019			Digitally signed by		
QA:				DONALD H LANIER		
Liaison:				May 01, 2019		
Procedure Comments: ENROUTE-NON Remark Type: INFORMATION P-NOTAM FDC 9/2554 CANCELS FDC 9/5307 CONTACT INFO: DON LANIER AJV-431 MANAGER. 405.954.8242						

QUALITY
18
CHECKED

EXISTING

LOUISVILLE, KENTUCKY

AL-238 (FAA)

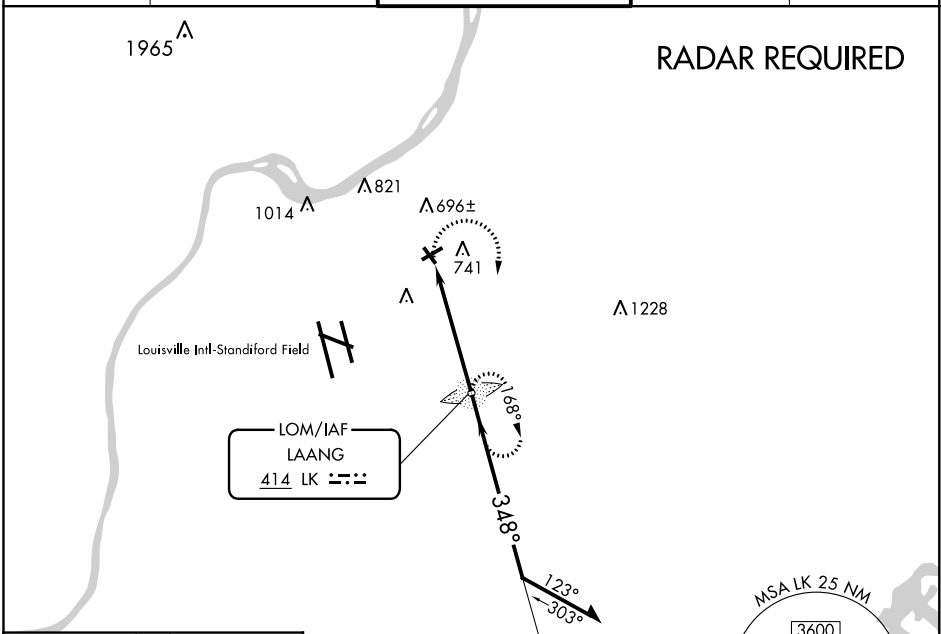
19059

LOM LK	APP CRS	Rwy Idg	3125
414	348°	TDZE	546
		Apt Elev	546

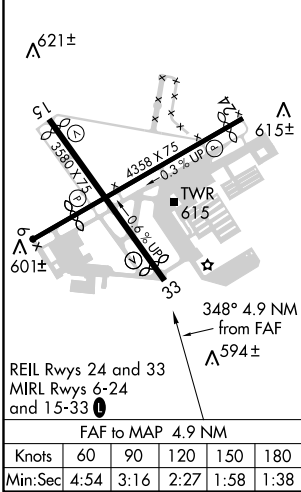
NDB RWY 33
BOWMAN FIELD (LOU)

<p>⚠ When local altimeter setting not received, use Louisville Intl-Standiford Field altimeter setting. Rwy 33 helicopter visibility reduction below 1 SM NA. Circling Rwy 6, 15 NA at night.</p>	<p>MISSED APPROACH: Climbing right turn to 2500 direct LAANG LOM and hold.</p>
--	--

ATIS 118.275	LOUISVILLE APP CON 132.075 327.0	BOWMAN TOWER ★ 119.5 (CTAF) 257.625	GND CON 121.8	CLNC DEL 118.9
-----------------	-------------------------------------	--	------------------	-------------------



ELEV 546	D	TDZE 546
----------	---	----------



2500	LK	LAANG LOM	Remain within 10 NM	
			2500	
			2200	
CATEGORY	A	B	C	D
S-33	1160-1	614 (700-1)	NA	
CIRCLING	1160-1	614 (700-1)	NA	

LOUISVILLE, KENTUCKY

Amdt 16B 28FEB19

38°14'N-85°40'W

BOWMAN FIELD (LOU)

NDB RWY 33

SE-1, 28 MAR 2019 to 25 APR 2019

SE-1, 28 MAR 2019 to 25 APR 2019

LOM LK	APP CRS	Rwy Idg	3125
414	348°	TDZE	546
		Apt Elev	546

NDB RWY 33

BOWMAN FIELD (LOU)

When local altimeter setting not received, use Louisville Intl-Standiford Field altimeter setting. Rwy 33 helicopter visibility reduction below 1 SM NA. Circling Rwy 6, 15, 33 NA at night. Rwy 33 straight-in minimums NA at night.

MISSED APPROACH: Climbing right turn to 2500 direct LAANG LOM and hold.

ATIS 118.275	LOUISVILLE APP CON 132.075 327.0	BOWMAN TOWER ★ 119.5 (CTAF) 257.625	GND CON 121.8	CLNC DEL 118.9
-----------------	-------------------------------------	--	------------------	-------------------

