

Flight Procedure Tracking Form		Action: FLIGHT CHECK	Task Type: IAP	Date Open: 04/02/2019	Task #: 2019040233770501001	Request #: 20190402337705
Procedure: RNAV (GPS) RWY 17 AMDT 1B			Airport ID: KUAO	Airport: AURORA STATE		Reimbursable #: NO
City: AURORA	ST: OR	GPS #:	Estimated Chart Date: 01/30/2020		FICO #:	
Fac ID: N/A		Fac. Type:		Specialist: GORDON LEMON		
Procedure Review						
	Rec'd	Rel'd	Full Name	Comments		
Lead:	04/02/2019	09/17/2019	WARDELL HENNING	QUALITY Digitally signed by		
QA:	09/17/2019			24 DAVID W SAUER		
Liaison:				CHECKED Nov 01, 2019		
Procedure Comments:			Remark Type: INFORMATION			
PENDING AIRPORT AND ACTIVE RWY DATA USED FOR KUAO. CANCEL FDC 9/3521 AND 9/1508 UPON PUBLICATION. CRC REMAINDER CHANGED. CONTACT: WARDELL HENNING: 405.954.9954.						

WAAS CH 70308 W17A	APP CRS 172°	Rwy Idg 5003 TDZE 200 Apt Elev 200
--	------------------------	---

RNAV (GPS) RWY 17
AURORA STATE (UAO)

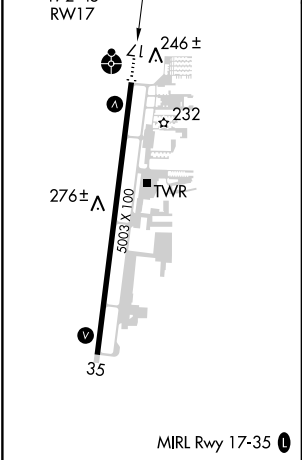
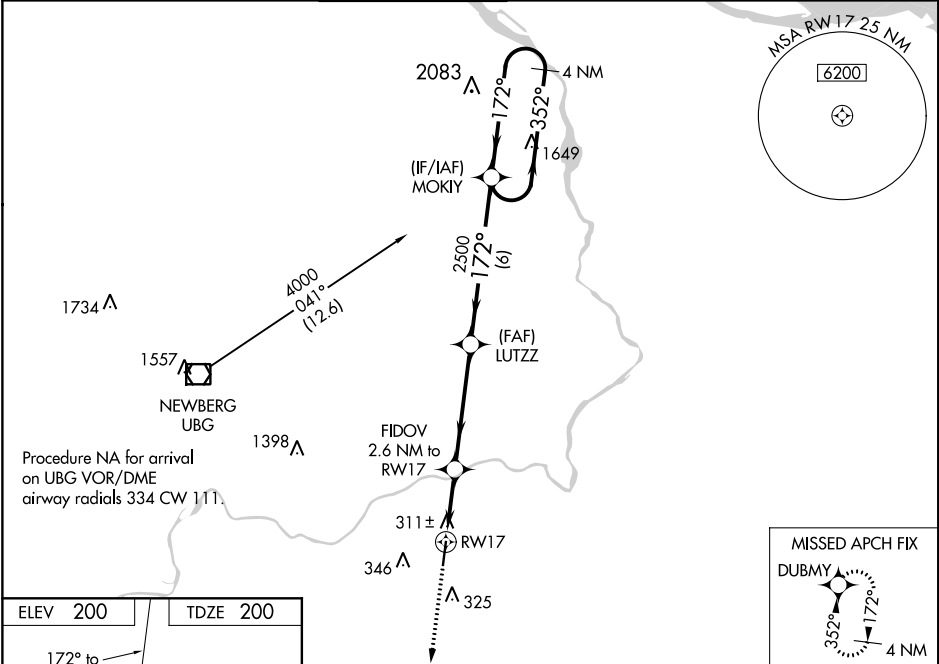
RNP APCH.

⚠ For uncompensated Baro-VNAV systems, LNAV/VNAV NA below -6°C or above 54°C. Rwy 17 helicopter visibility reduction below ¾ SM NA. Inop table does not apply to LPV all Cats. For inop ALS, increase LNAV/VNAV and LNAV Cat C/D visibility to 1¾ SM.

ODALS

MISSED APPROACH: Climb to 3900 direct DUBMY and hold, continue climb-in-hold to 3900.

ATIS ★ 118.525	PORTLAND APP CON 126.0 269.175	AURORA TOWER ★ 120.35 (CTAF) 0	GND CON 119.15	CLNC DEL 119.15	PORTLAND CLNC DEL 119.95 (When tower closed)
--------------------------	--	--	--------------------------	---------------------------	---

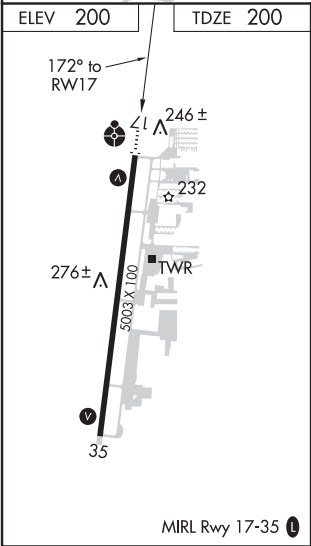
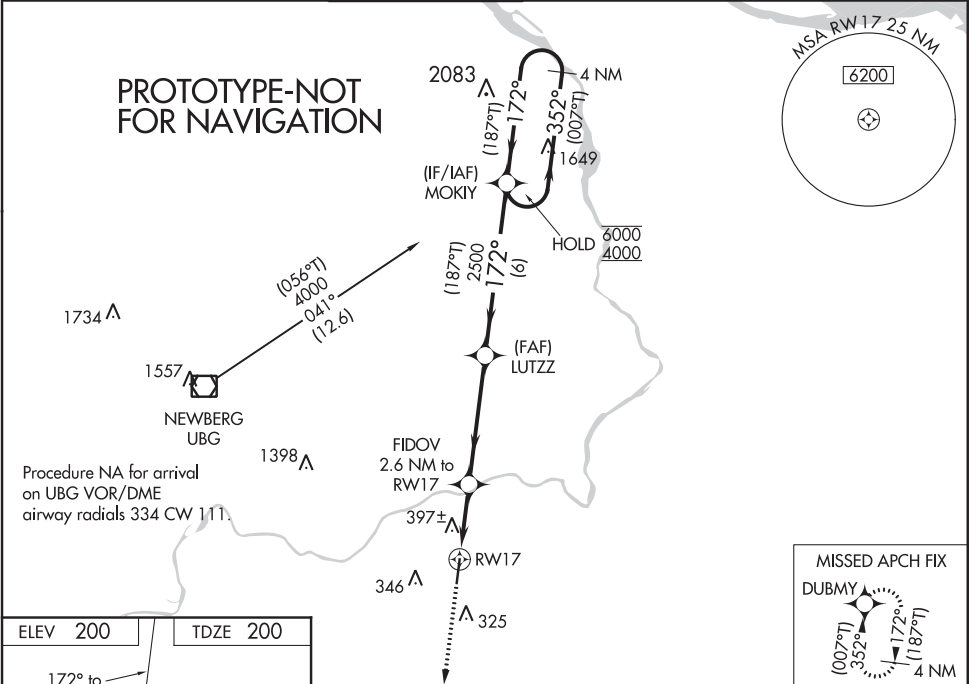


3900	DUBMY	VGSI and RNAV glidepath not coincident (VGSI Angle 3.50/TCH 38).	MOKIY	4 NM Holding Pattern
*LNAV only	FIDOV 2.6 NM to RW17	LUTZZ	2500	352° → 4000
0.9 NM to RW17	RW17	1060	172° ← 2500	GP 3.00° TCH 40
0.9	1.7 NM	4.5 NM	6 NM	
CATEGORY	A	B	C	D
LPV	DA	511-7/8	311 (400-7/8)	
LNAV/VNAV	DA	642-1 1/8	442 (500-1 1/8)	
LNAV	MDA	660-1 460 (500-1)	660-1 1/8 460 (500-1 1/8)	
CIRCLING	700-1	500 (500-1)	700-1 1/2 500 (500-1 1/2)	940-2 1/4 740 (800-2 1/4)

WAAS CH 70308 W17A	APP CRS 172°	Rwy Idg 5003 TDZE 200 Apt Elev 200
--	------------------------	---

RNAV (GPS) RWY 17
AURORA STATE (UAO)

RNP APCH. <div><div></div><div>RWY 17 HELICOPTER VISIBILITY REDUCTION BELOW 3/4 SM NA. FOR UNCOMPENSATED BARO-VNAV SYSTEMS, LNAV/VNAV NA BELOW -6°C OR ABOVE 54°C. FOR INOP ALS, INCREASE LNAV/VNAV CAT A/B AND LNAV CAT C/D VISIBILITY TO 1 3/8 SM; INOOPERATIVE TABLE DOES NOT APPLY TO LPV AND LNAV CAT A/B.</div></div>			ODALS <div><div></div><div></div></div>	MISSED APPROACH: Climb to 3900 direct DUBMY and hold, continue climb-in-hold to 3900.		
ATIS ★ 118.525	PORTLAND APP CON 126.0 269.175	AURORA TOWER ★ 120.35 (CTAF) 0	GND CON 119.15	CLNC DEL 119.15	PORTLAND CLNC DEL 119.95 (When tower closed)	



3900 DUBMY		VGSI and RNAV glidepath not coincident (VGSI Angle 3.50/TCH 38).		4 NM Holding Pattern	
* LNAV only		FIDOV 2.6 NM to RW17		MOKIY	
* 1.1 NM to RW17		LUTZZ 2500		352° (007°T) 352° (187°T)	
RW17		1060*		6000 4000	
1.1 1.5 NM		4.5 NM		6 NM	
CATEGORY		A		B	
LPV DA		511-7/8		311 (400-7/8)	
LNAV/VNAV DA		661-1 1/4		461 (500-1 1/4)	
LNAV MDA		660-1 460 (500-1)		660-1 1/8 460 (500-1 1/8)	
CIRCLING		700-1 500 (500-1)		700-1 1/2 500 (500-1 1/2)	
				940-2 1/4 740 (800-2 1/4)	

PROC: RNAV GPS RWY 17, AMDT 1B
CITY/STATE: AURORA, OR
APT NAME/ID: AURORA STATE (KUAO)
1:100K LNAV/VNAV
6. LNAV FINAL 379 TREE (41-044268)

