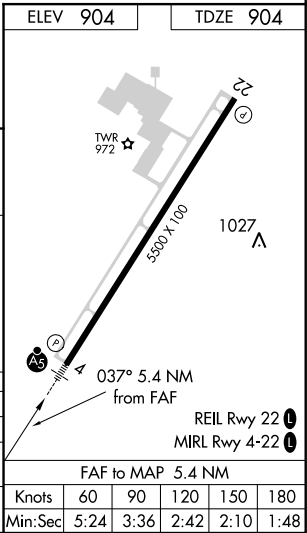
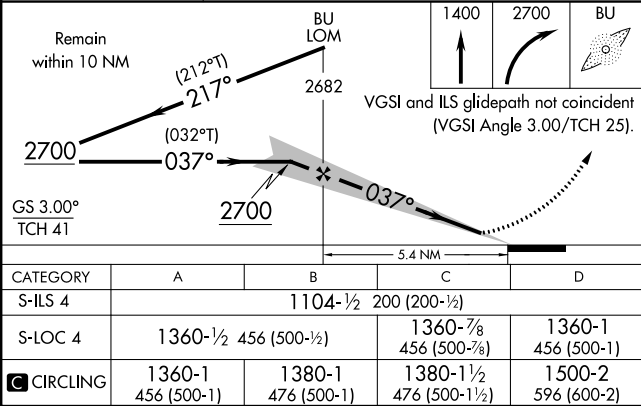
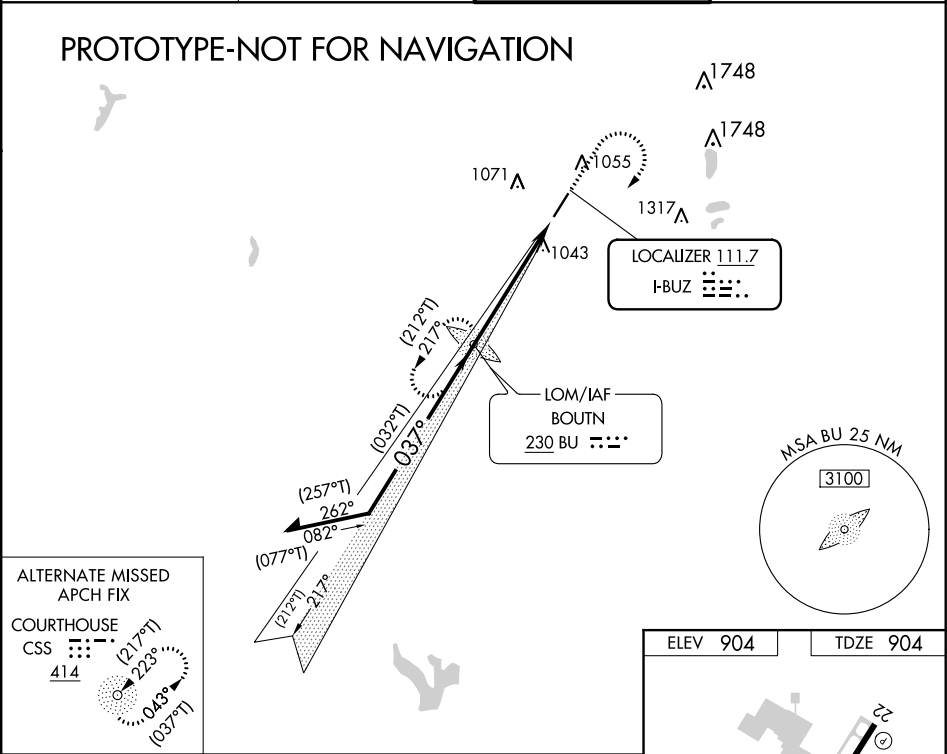


Flight Procedure Tracking Form		Action: AMENDMENT	Task Type: IAP	Date Open: 04/02/2019	Task #: 2019040227804401001	Request #: 20190402278044
Procedure: ILS OR LOC RWY 4 AMDT 5B			Airport ID: KTZR	Airport: BOLTON FIELD		Reimbursable #: NO
City: COLUMBUS	ST: OH	GPS #:	Estimated Chart Date: 12/05/2019		FICO #:	
Fac ID: BUZ		Fac. Type: ILS			Specialist: CHRISTOPHER SCHONES	
Procedure Review						
	Rec'd	Rel'd	Full Name	Comments		
Lead:	04/03/2019	07/29/2019	DONALD LANIER	Digitally signed by		
QA:	07/29/2019		J ZEDER 08/08/2019	WARDELL HENNING		
Liaison:				Aug 16, 2019		
Procedure Comments: ENROUTE-NON Remark Type: INFORMATION PROCESSED IAW AIRCRAFT OPERATIONS GROUP (AJW-33) MEMO, OCTOBER 3, 2018, SUBJECT: FLIGHT INSPECTION REVIEW NOT REQUIRED INCORPORATED NOTAM !FDC 9/7131 CONTACT DONALD LANIER (405)954-8242						




LOC I-BUZ 111.7	APP CRS 037°	Rwy Idg TDZE Apt Elev	5500 904 904
---------------------------	------------------------	-----------------------------	---

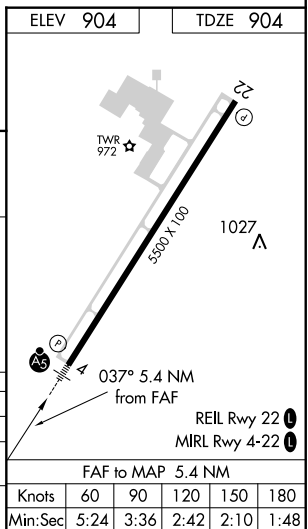
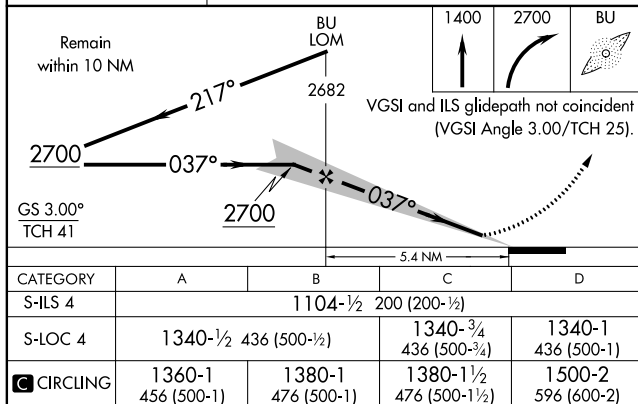
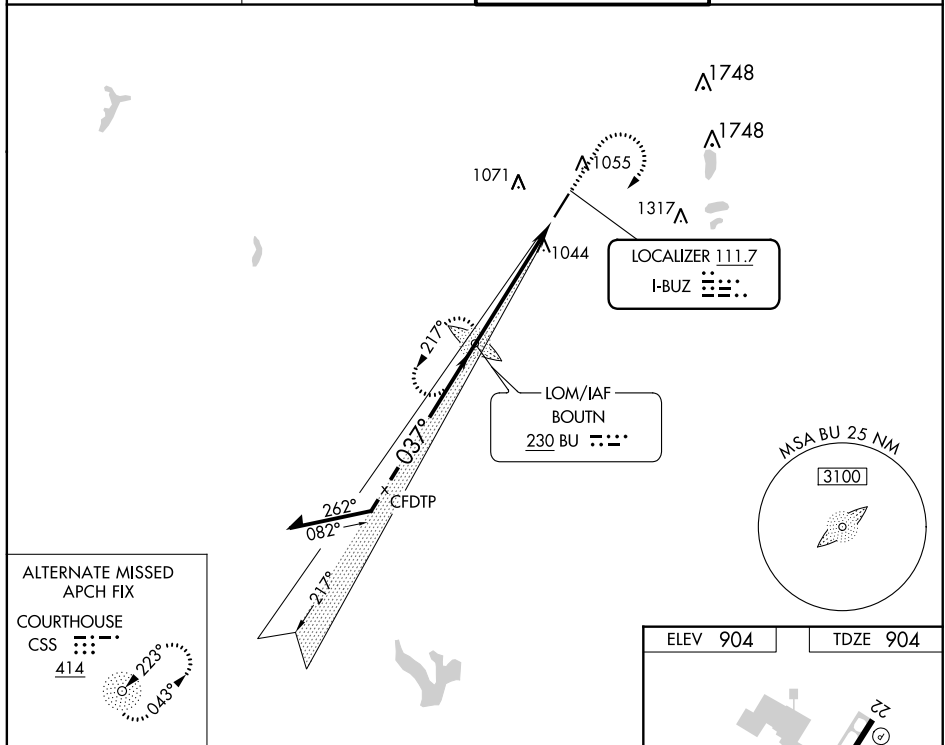
ILS or LOC RWY 4
BOLTON FIELD (TZR)

ADF required. RADAR required for procedure entry.		MALSR	MISSED APPROACH: Climb to 1400 then climbing right turn to 2700 direct BU LOM and hold.
Autopilot coupled approach NA below 1144.			
AWOS-3 135.925	COLUMBUS APP CON 134.0 279.6	BOLTON TOWER ★ 128.1 (CTAF)	GND CON 121.8



ILS or LOC RWY 4
BOLTON FIELD (TZR)

ADF required. RADAR required for procedure entry.		MALSR 	MISSED APPROACH: Climb to 1400 then climbing right turn to 2700 direct BU LOM and hold.	
				
AWOS-3 135.925	COLUMBUS APP CON 134.0 279.6	BOLTON TOWER ★ 128.1 (CTAF) 	GND CON 121.8	



EC-2, 23 MAY 2019 to 20 JUN 2019

EC-2. 23 MAY 2019 to 20 JUN 2019

