

Flight Procedure Tracking Form		Action: AMENDMENT	Task Type: IAP	Date Open: 03/29/2019	Task #: 2019032929196401001	Request #: 20190329291964
Procedure: RNAV (GPS) Y RWY 8 AMDT 2D			Airport ID: KGEF	Airport: SPOKANE INTL		Reimbursable #: NO
City: SPOKANE	ST: WA	GPS #:	Estimated Chart Date: 06/20/2019		FICO #:	
Fac ID: N/A		Fac. Type:		Specialist: JAMES LAFFERTY		
Procedure Review						
	Rec'd	Rel'd	Full Name	Comments		
Lead:	03/29/2019	04/04/2019	DAVID TEFFETELLER	4/11 J. DuBois		
QA:	04/04/2019					
Liaison:						
Procedure Comments:			Remark Type: INFORMATION			
<p>PROCESSED IAW AIRCRAFT OPERATIONS GROUP (AJW-33) MEMO, OCTOBER 3, 2018, SUBJECT: FLIGHT INSPECTION REVIEW NOT REQUIRED.</p> <p>CONTACT DAVE TEFFETELLER AT 202-267-5177</p>						

OLD

SPOKANE, WASHINGTON

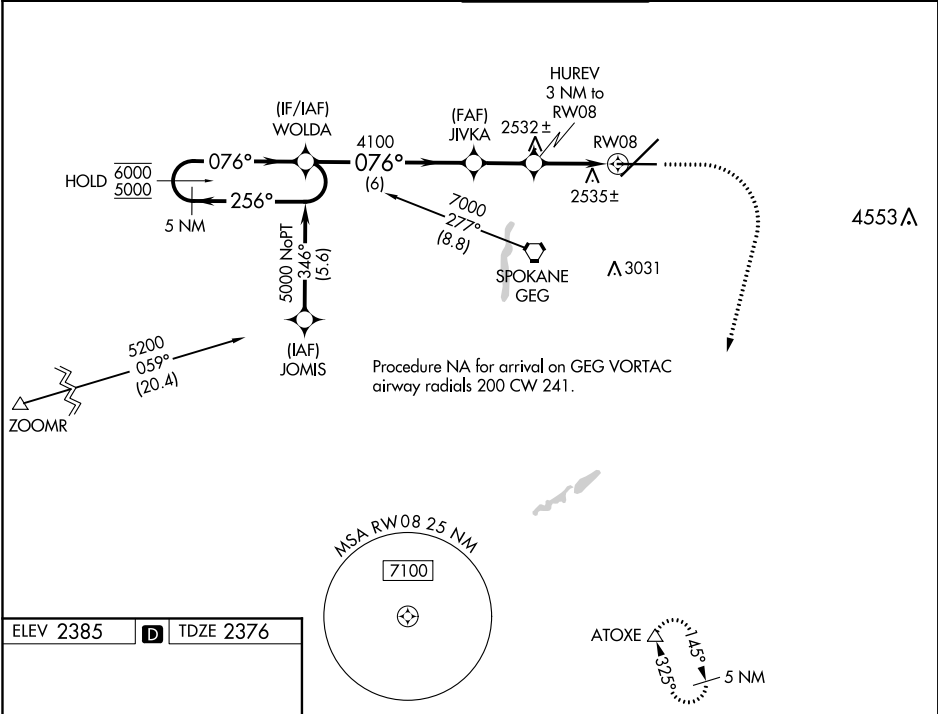
19059

WAAS CH 48801 W08A	APP CRS 076°	Rwy Idg TDZE Apt Elev	8199 2376 2385
--	------------------------	-----------------------------	---

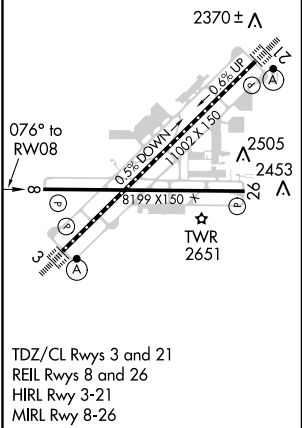
RNAV (GPS) Y RWY 8
SPOKANE INTL (GEG)

RNP APCH.	MISSED APPROACH: Climb to 2900, then climbing right turn to 6000 direct ATOXE and hold.
▼ For uncompensated Baro-VNAV systems, LNAV/VNAV NA below -18°C or above 52°C.	

ATIS 124.325 254.375	SPOKANE APP CON 123.75 282.25 (205°-025°) 133.35 263.0 (026°-204°)	SPOKANE TOWER 118.3 278.3	GND CON 121.9 348.6	CLNC DEL 127.55
--------------------------------	--	-------------------------------------	-------------------------------	---------------------------



ELEV 2385	D	TDZE 2376
-----------	----------	-----------



5 NM Holding Pattern		WOLDA	JIVKA	HUREV 3 NM to RWY 08	2900	6000	ATOXE
6000 ← 256°		076° →	076°	4100	↑	↗	△
GP 3.00° TCH 60		4100	*3400	*1.2 NM to RWY 08	*LNAV only.		
6 NM		2.2 NM	1.8 NM	1.2			
CATEGORY	A	B	C	D			
LPV DA	2576-3/4		200 (200-3/4)				
LNAV/VNAV DA	2834-1 1/2		458 (500-1 1/2)				
LNAV MDA	2800-1	424 (500-1)	2800-1 1/4	424 (500-1 1/4)			
CIRCLING	2960-1 575 (600-1)	2980-1 595 (600-1)	3300-2 3/4 915 (1000-2 3/4)	3400-3 1015 (1100-3)			

SPOKANE, WASHINGTON
Amdt 2B 03JAN19

47°37'N-117°32'W

SPOKANE INTL (GEG)
RNAV (GPS) Y RWY 8

NW-1, 28 MAR 2019 to 25 APR 2019

NW-1, 28 MAR 2019 to 25 APR 2019