


Flight Procedure Tracking Form		Action: AMENDMENT	Task Type: IAP	Date Open: 01/25/2019	Task #: 2019012533704802003	Request #: 20190125337048
Procedure: RNAV (GPS) RWY 23 AMDT 0C			Airport ID: KBOW	Airport: BARTOW EXECUTIVE		Reimbursable #: NO
City: BARTOW	ST: FL	GPS #:	Estimated Chart Date: 08/15/2019		FICO #:	
Fac ID: N/A		Fac. Type:		Specialist: ANTHONY CAPPABIANCO		
Procedure Review						
	Rec'd	Rel'd	Full Name	Comments		
Lead:	02/22/2019	05/03/2019	ANDI LAU	 <i>Digitally signed by</i>		
QA:	05/01/2019			GEORGETTE P BARNETT Jun 21, 2019		
Liaison:						
Procedure Comments: ENROUTE-NON Remark Type: INFORMATION PROCESSED IAW AIRCRAFT OPERATIONS GROUP (AJW-33) MEMO, OCTOBER 3, 2018, SUBJECT: FLIGHT INSPECTION REVIEW NOT REQUIRED. CONTACT DAVID DANNER 405-954-5077 06/19/2019: THIS IS A CORRECTED COPY OF THE FORM APPROVED ON 05/03/2019. 1. CHANGED MISSED APPROACH INSTRUCTIONS TO READ "CLIMB TO 2300 DIRECT FODBI AND HOLD."						

WAAS CH 63112 W23A	APP CRS 230°	Rwy Idg 5000 TDZE 124 Apt Elev 125
--	------------------------	---

OLD

RNAV (GPS) RWY 23

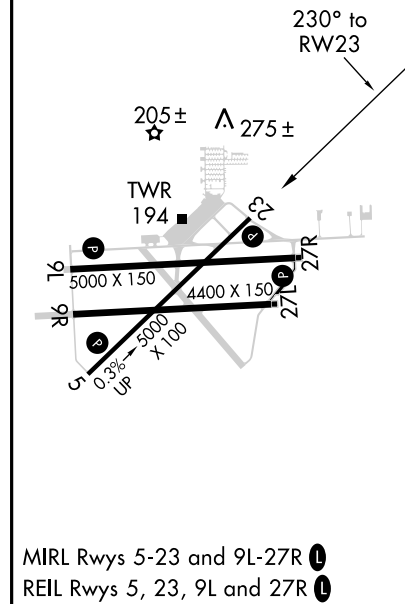
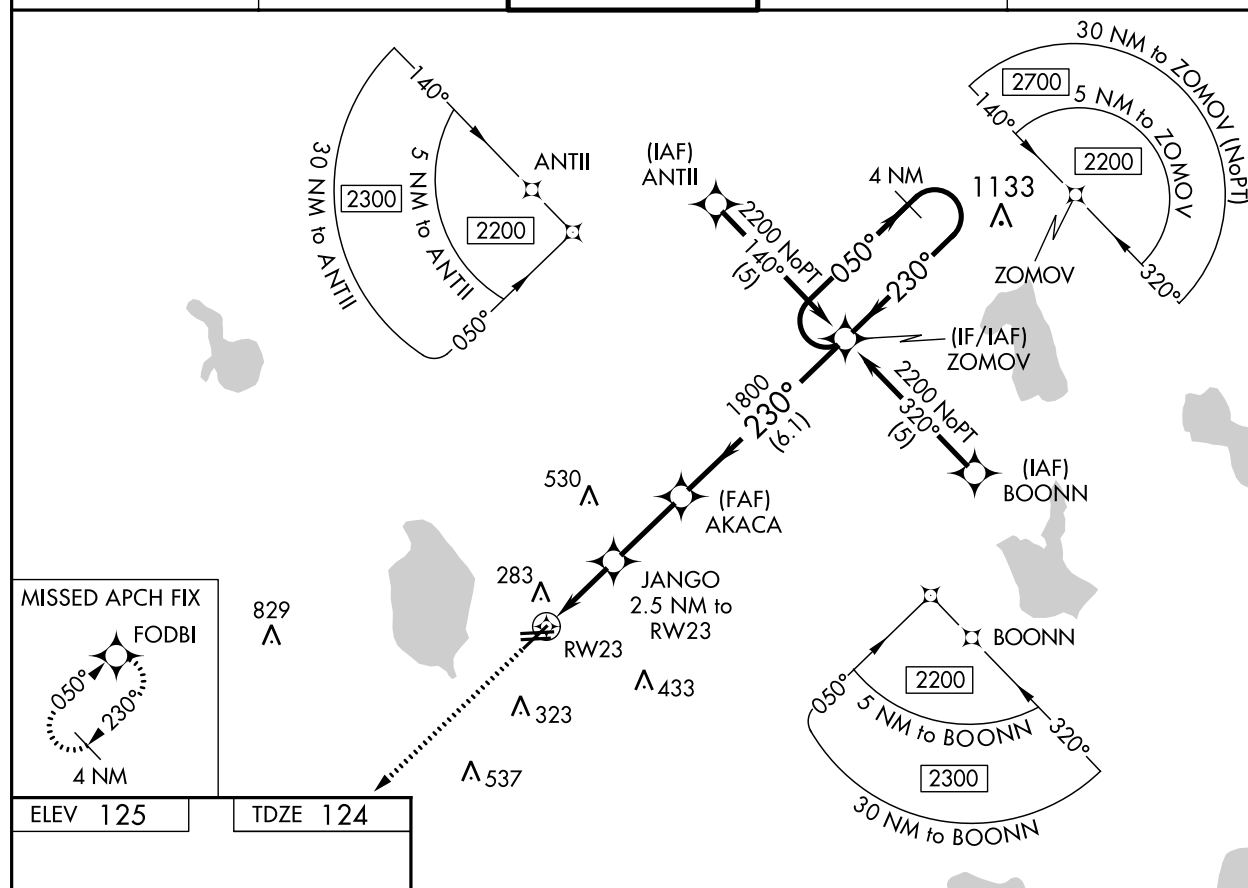
BARTOW MUNI(BOW)



For uncompensated Baro-VNAV systems, LNAV/VNAV NA below -1.5°C (5°F) or above 48°C (118°F). DME/DME RNP 0.3 NA. Visibility reduction by helicopters NA. When local altimeter setting not received; use Tampa Intl altimeter setting and increase all DA 106 feet and MDA 120 feet; increase LPV and LNAV/VNAV visibility all Cats ½ mile, LNAV visibility Cat C and D and Circling Cat D ¼ mile. Baro-VNAV NA when using Tampa Intl altimeter setting.

MISSED APPROACH:
Climb to 2300 direct
FODBI and hold.

AWOS-3 123.775	TAMPA APP CON 120.65 290.3	BARTOW TOWER ★ 121.20 (CTAF)	GND CON 121.9	UNICOM 122.95
--------------------------	--------------------------------------	--	-------------------------	-------------------------



ELEV 125	TDZE 124	230° to RW23	2300 FODBI	VGSI and RNAV glidepath not coincident (VGSI Angle 3.50/TCH 46).	ZOMOV	4 NM Holding Pattern
*LNAV only.						
JANGO 2.5 NM to RW23						
AKACA						
RW23						
*980						
1800						
GP 3.00° TCH 60						
2.5 NM 2.5 NM 6.1 NM						
CATEGORY	A	B	C	D		
LPV DA	454-1 330 (400-1)					
LNAV/VNAV DA	575-1½ 451 (500-1½)					
LNAV MDA	580-1 456 (500-1)		580-1¼ 456 (500-1¼)		580-1½ 456 (500-1½)	
CIRCLING	600-1 475 (500-1)		600-1½ 475 (500-1½)		680-2 555 (600-2)	