


Flight Procedure Tracking Form		Action: AMENDMENT	Task Type: IAP	Date Open: 01/24/2019	Task #: 2019012433064601005	Request #: 20190124330646
Procedure: RNAV (GPS) RWY 31 AMDT 0G			Airport ID: KSUX	Airport: SIOUX GATEWAY/COL BUD DAY FIELD		Reimbursable #: NO
City: SIOUX CITY	ST: IA	GPS #:	Estimated Chart Date: 06/20/2019		FICO #:	
Fac ID: N/A		Fac. Type:			Specialist: RUSSELL ROSLEWSKI	
Procedure Review						
	Rec'd	Rel'd	Full Name	Comments		
Lead:	01/24/2019			<div style="text-align: center;"> <div>QUALITY</div> <div>22</div> <div>CHECKED</div> </div> <div style="text-align: right;"> 3.15.2019 BD </div>		
QA:						
Liaison:						
Procedure Comments: ENROUTE-NON Remark Type: INFORMATION ABBREVIATED AMENDMENT PROCESSED IAW AIRCRAFT OPERATIONS GROUP (AJW-33) MEMO, OCTOBER 3, 2018, SUBJECT: FLIGHT INSPECTION REVIEW NOT REQUIRED. DAVE DANNER, 405-954-4077						

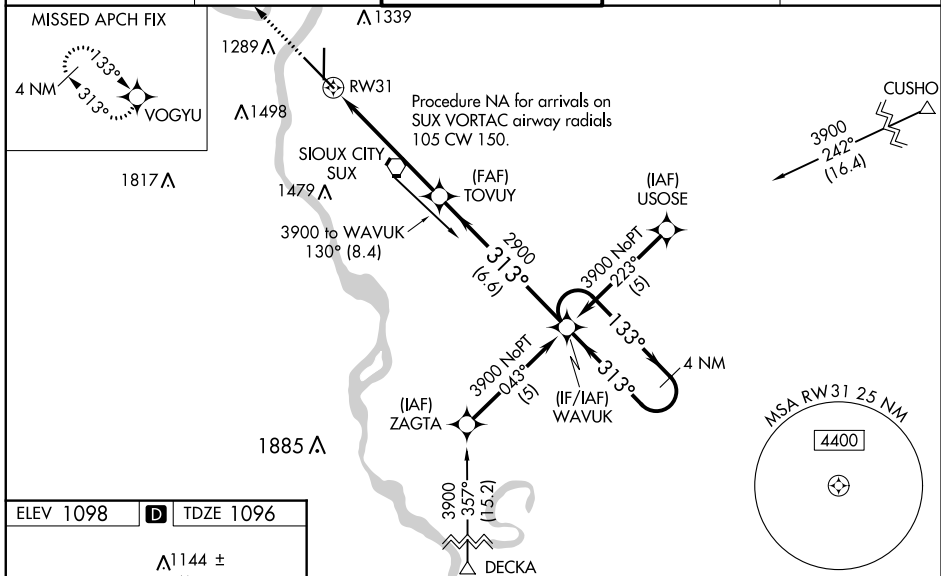
WAAS CH 90211 W31A	APP CRS 313°	Rwy Idg 9002 TDZE 1096 Apt Elev 1098
--	------------------------	---

RNAV (GPS) RWY 31

SIOUX GATEWAY/COLONEL BUD DAY FIELD (SUX)

<p>⚠ For uncompensated Baro-VNAV systems, LNAV/VNAV NA below -21°C (-5°F) or above 54°C (130°F). DME/DME RNP-0.3 NA. When local altimeter setting not received, use Le Mars altimeter setting and increase all DA 70 feet and all MDA 80 feet, increase LNAV/VNAV all Cats visibility to 1½ miles and LNAV Cats C/D/E visibility to RVR 6000, increase Circling Cats C/D visibility ¼ mile. For inop MALSR increase LPV Cat E visibility to RVR 4000; increase LNAV/VNAV Cat E visibility to 1½ miles and LNAV Cats C/D/E visibility to 1¾ mile. For inop MALSR, when using Le Mars altimeter setting, increase LPV all Cats visibility to RVR 4500; increase LNAV/VNAV Cat E visibility to 2 miles; increase LNAV Cat E visibility to 1¾ mile. VDP and Baro-VNAV NA when using Le Mars altimeter setting. ** RVR 1800 authorized with use of FD or AP or HUD to DA, NA when using Le Mars altimeter setting.</p>	<p>MALSR</p> 	<p>MISSED APPROACH: Climb to 3500 direct VOGYU and hold.</p>
--	--	---

ATIS 119.45 270.8	SIoux CITY APP CON ★ 124.6 307.0	SIoux CITY TOWER ★ 118.7(CTAF) 0 254.3	GND CON 121.9 348.6	UNICOM 122.95
----------------------	-------------------------------------	---	------------------------	------------------

[illegible]

SLIUX CITY, IOWA
Orig-F 01FEB18

SIOUX GATEWAY/COLONEL BUD DAY FIELD (SUX)
 42°24'N-96°23'W **RNAV (GPS) RWY 31**

NC-3, 31 JAN 2019 to 28 FEB 2019

NC-3, 31 JAN 2019 to 28 FEB 2019