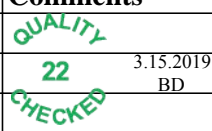


Flight Procedure Tracking Form		Action: AMENDMENT	Task Type: IAP	Date Open: 01/24/2019	Task #: 2019012433064601004	Request #: 20190124330646
Procedure: RNAV (GPS) RWY 17 AMDT 1A				Airport ID: KSUX	Airport: SIOUX GATEWAY/COL BUD DAY FIELD	Reimbursable #: NO
City: SIOUX CITY	ST: IA	GPS #:	Estimated Chart Date: 06/20/2019		FICO #:	
Fac ID: N/A		Fac. Type:			Specialist: RUSSELL ROSLEWSKI	
Procedure Review						
	Rec'd	Rel'd	Full Name	Comments		
Lead:	01/24/2019					
QA:						
Liaison:						
Procedure Comments: ENROUTE-NON Remark Type: INFORMATION ABBREVIATED AMENDMENT PROCESSED IAW AIRCRAFT OPERATIONS GROUP (AJW-33) MEMO, OCTOBER 3, 2018, SUBJECT: FLIGHT INSPECTION REVIEW NOT REQUIRED. DAVE DANNER, 405-954-4077						

SIoux CITY, IOWA

OLD

18144

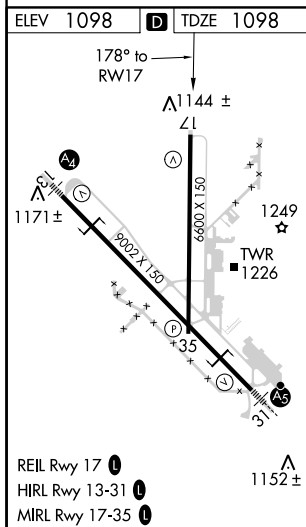
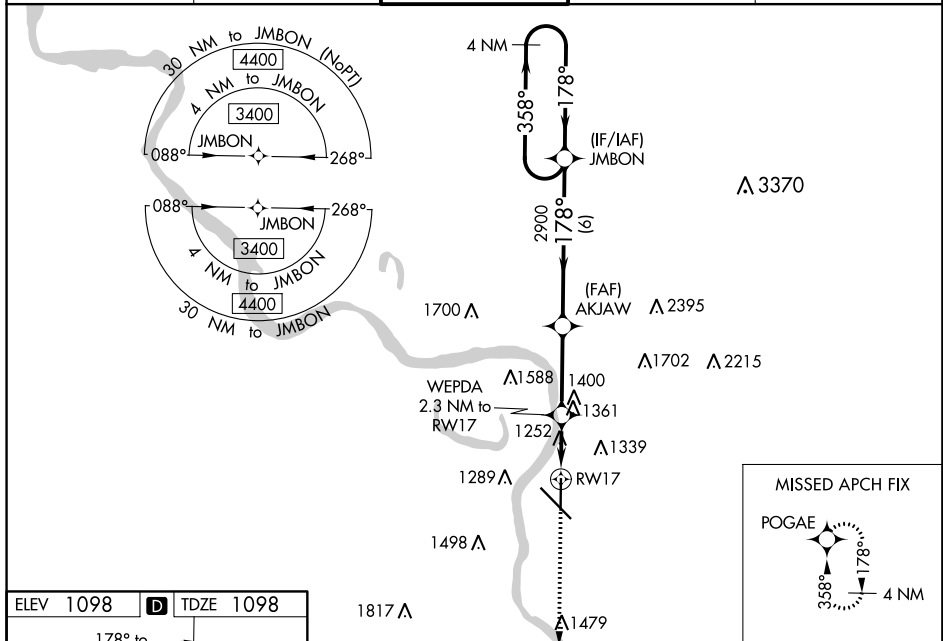
WAAS CH 7783B W17A	APP CRS 178°	Rwy Idg 6598 TDZE 1098 Apt Elev 1098
--	------------------------	---






RNAV (GPS) RWY 17

SIoux GATEWAY/COLONEL BUD DAY FIELD (SUX)

<p>⚠ For uncompensated Baro-VNAV systems, LNAV/VNAV NA below -21°C (-5°F) or above 54°C (130°F). Baro-VNAV and VDP NA when using Le Mars altimeter setting. DME/DME RNP-0.3 NA. Helicopter visibility reduction below $\frac{3}{4}$ SM NA. When local altimeter setting not received, use Le Mars altimeter setting and increase all DA 70 feet and visibility $\frac{1}{4}$ mile. Increase all MDA 80 feet and LNAV Cats C/D visibility $\frac{1}{8}$ mile and Circling Cat C/D visibility $\frac{1}{4}$ mile.</p>	<p>MISSED APPROACH: Climb to 3200 direct POGAE and hold.</p>
--	---

ATIS 119.45 270.8	SIoux CITY APP CON * 124.6 307.0	SIoux CITY TOWER * 118.7 (CTAF) 0 254.3	GND CON 121.9 348.6	UNICOM 122.95
-----------------------------	--	---	-------------------------------	-------------------------



3200	POGAE	VGSI and RNAV glidepath not coincident (VGSI Angle 3.00/TCH 72).		JMBON	4 NM Holding Pattern
			AKJAW		
* LNAV only	WEPDA 2.3 NM to RW17	2900		358° → ← 178°	3400
	* 1.1 NM to RW17		178°	2900	
		1880*			GP 3.00° TCH 54
	1.1	1.2	3.2 NM	6 NM	
CATEGORY	A	B	C	D	
LPV DA	1364-7 ⁸ / ₈ 266 (300-7 ⁸ / ₈)				
LNAV/ VNAV DA	1531-1 ³ / ₈ 433 (500-1 ³ / ₈)				
LNAV MDA	1520-1 422 (500-1)	1520-1 ¹ / ₄ 422 (500-1 ¹ / ₄)			
 CIRCLING	1640-1 542 (600-1)	1700-1 602 (700-1)	1700-1 ³ / ₄ 602 (700-1 ³ / ₄)	1840-2 ¹ / ₂ 742 (800-2 ¹ / ₂)	

SIoux CITY, IOWA
Amdt 1 26MAY16

RNAV (GPS) RWY 17

SIoux GATEWAY/COLONEL BUD DAY FIELD (SUX)

42°24'N-96°23'W

NC-3, 03 JAN 2019 to 31 JAN 2019

NC-3, 03 JAN 2019 to 31 JAN 2019