

<b>Flight Procedure Tracking Form</b>		<b>Action:</b> AMENDMENT	<b>Task Type:</b> IAP	<b>Date Open:</b> 12/26/2018	<b>Task #:</b> 2018122634010301001	<b>Request #:</b> 20181226340103
<b>Procedure:</b> RNAV (GPS) RWY 36 AMDT 0C			<b>Airport ID:</b> KTZT	<b>Airport:</b> BELLE PLAINE MUNI	<b>Reimbursable #:</b> NO	
<b>City:</b> BELLE PLAINE	<b>ST:</b> IA	<b>GPS #:</b>	<b>Estimated Chart Date:</b> 10/10/2019		<b>FICO #:</b> 1229496	
<b>Fac ID:</b> N/A		<b>Fac. Type:</b>		<b>Specialist:</b> BARBARA GORMAN		
<b>Procedure Review</b>						
	<b>Rec'd</b>	<b>Rel'd</b>	<b>Full Name</b>	<b>Comments</b>		
<b>Lead:</b>	03/13/2019	06/14/2019	KISSY MAXFIELD			
<b>QA:</b>	06/14/2019	06/14/2019	KISSY MAXFIELD			
<b>Liaison:</b>	06/14/2019	06/17/2019	MARY MCDONALD			
<b>Procedure Comments:</b>			ENROUTE-NON	<b>Remark Type:</b> INFORMATION		
<p>AMEND TO REMOVE NOTAM 8/4092. CONTACT: ANDREW HENNING: 405.954.9954</p> <p>8/28/2019: THIS IS A CORRECTED COPY OF THE FORM APPROVED ON 6/17/2019: 1. UPDATED THRE 769 TO TDZE 769.</p>						



BELLE PLAINE, IOWA

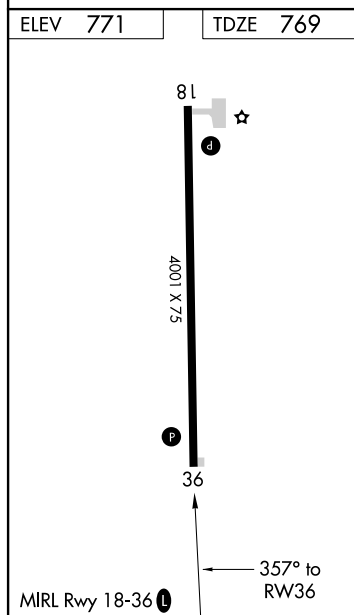
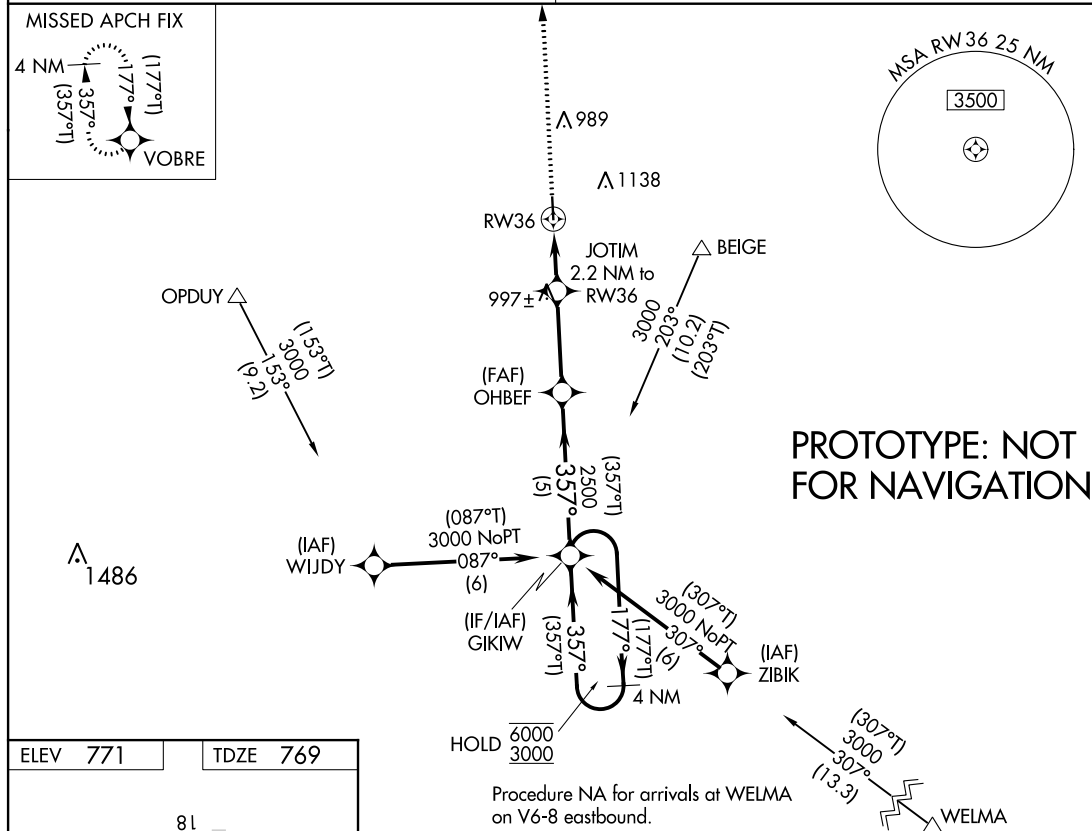
AL-9149 (FAA)



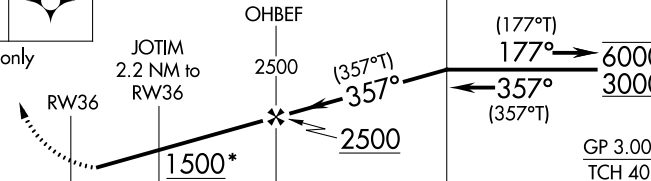

FIG

WAAS CH <b>56426</b> <b>W36A</b>	APP CRS <b>357°</b>	Rwy Idg TDZE <b>769</b> Apt Elev <b>771</b>	<b>4001</b>
--	------------------------	---	-------------

# **RNAV (GPS) RWY 36** BELLE PLAINE MUNI (T'ZT')

RNP APCH.	MISSED APPROACH: Climb to 3000 direct VOBRE and hold.
<p>▼ ▲NA Rwy 36 helicopter visibility reduction below ¾ SM NA. Baro-VNAV NA. Use Vinton altimeter setting</p>	
CEDAR RAPIDS APP CON ★ <b>119.7 266.8</b>	CTAF <b>122.9</b>



3000	VOBRE				
					
*LNAV only					
					
2.2 NM		3.1 NM	5 NM		
CATEGORY	A		B	C	D
LPV DA	1104-1 335 (400-1)			NA	
LNAV/VNAV DA	1083-1 314 (400-1)			NA	
LNAV MDA	1380-1 611 (700-1)			NA	
 CIRCLING	1420-1 649 (700-1)	1520-1 749 (800-1)		NA	

AUTOMATED AL-9149 RNAV (GPS) RWY 36

NC-3  
29 APR 2019  
COMPILER: CG  
REVIEWER:  
DBL CHKR:  
EFF: FIG

BELLE PLAINE, IOWA  
Orig-C FIG

41°53'N-92°17'W

BELLE PLAINE MUNI (T'ZT')  
**RNAV (GPS) RWY 36**

BELLE PLAINE, IOWA

AL-9149 (FAA)

18032

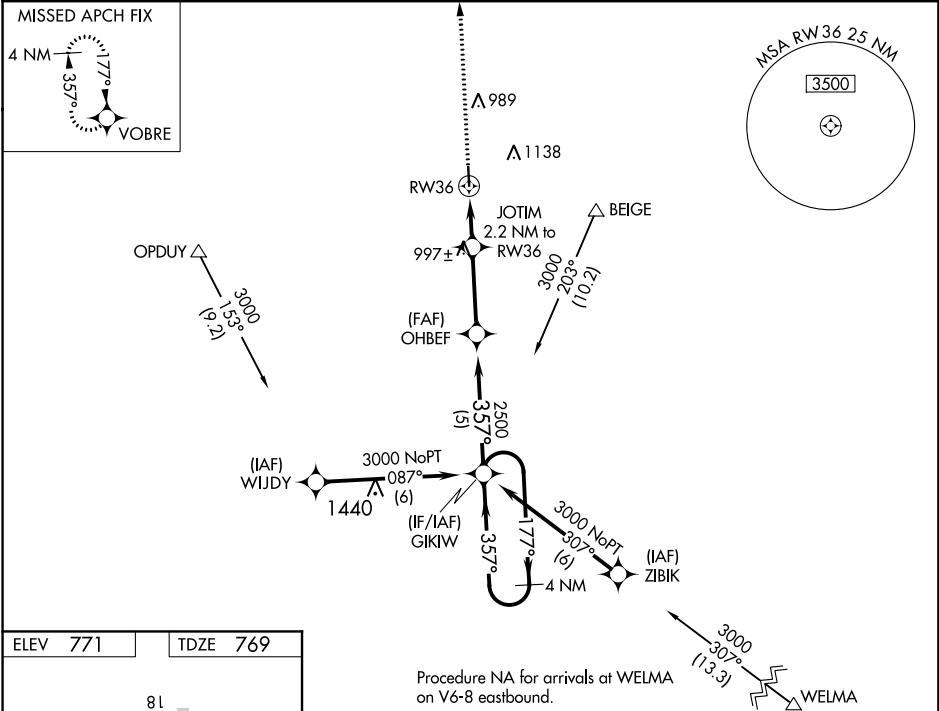
WAAS CH <b>56426</b> <b>W36A</b>	APP CRS <b>357°</b>	Rwy Idg <b>4001</b> TDZE <b>769</b> Apt Elev <b>771</b>
--	------------------------	---

# RNAV (GPS) RWY 36

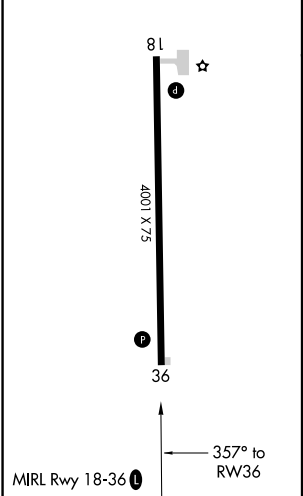
BELLE PLAINE MUNI (T/ZT)

<b>NA</b>	Baro-VNAV NA. Use Vinton altimeter setting; when not received, use Cedar Rapids altimeter setting and increase all DA 9 feet and LNAV MDA 20 feet, increase LPV and LNAV/VNAV all Cats visibility 1/8 mile. DME/DME RNP-0.3 NA. Rwy 36 helicopter visibility reduction below 3/4 SM NA.	<b>MISSED APPROACH:</b> Climb to 3000 direct VOBRE and hold.
-----------	---	---

<b>CEDAR RAPIDS APP CON *</b> <b>119.7 266.8</b>	<b>CTAF</b> <b>122.9</b>
---	-----------------------------



ELEV 771	TDZE 769
----------	----------



3000 ↑ VOBRE		GIKIW 4 NM Holding Pattern		
*LNAV only		JOTIM 2.2 NM to RW36		
RW36		OHBEF 2500		
1500*		357° 2500		
2.2 NM		3.1 NM		
5 NM		GP 3.00° TCH 40		
CATEGORY	A	B	C	D
LPV DA	1083-1	314 (400-1)	NA	
LNAV/ VNAV	1083-1	314 (400-1)	NA	
LNAV MDA	1380-1	611 (700-1)	NA	
CIRCLING	1420-1 649 (700-1)	1460-1 689 (700-1)	NA	

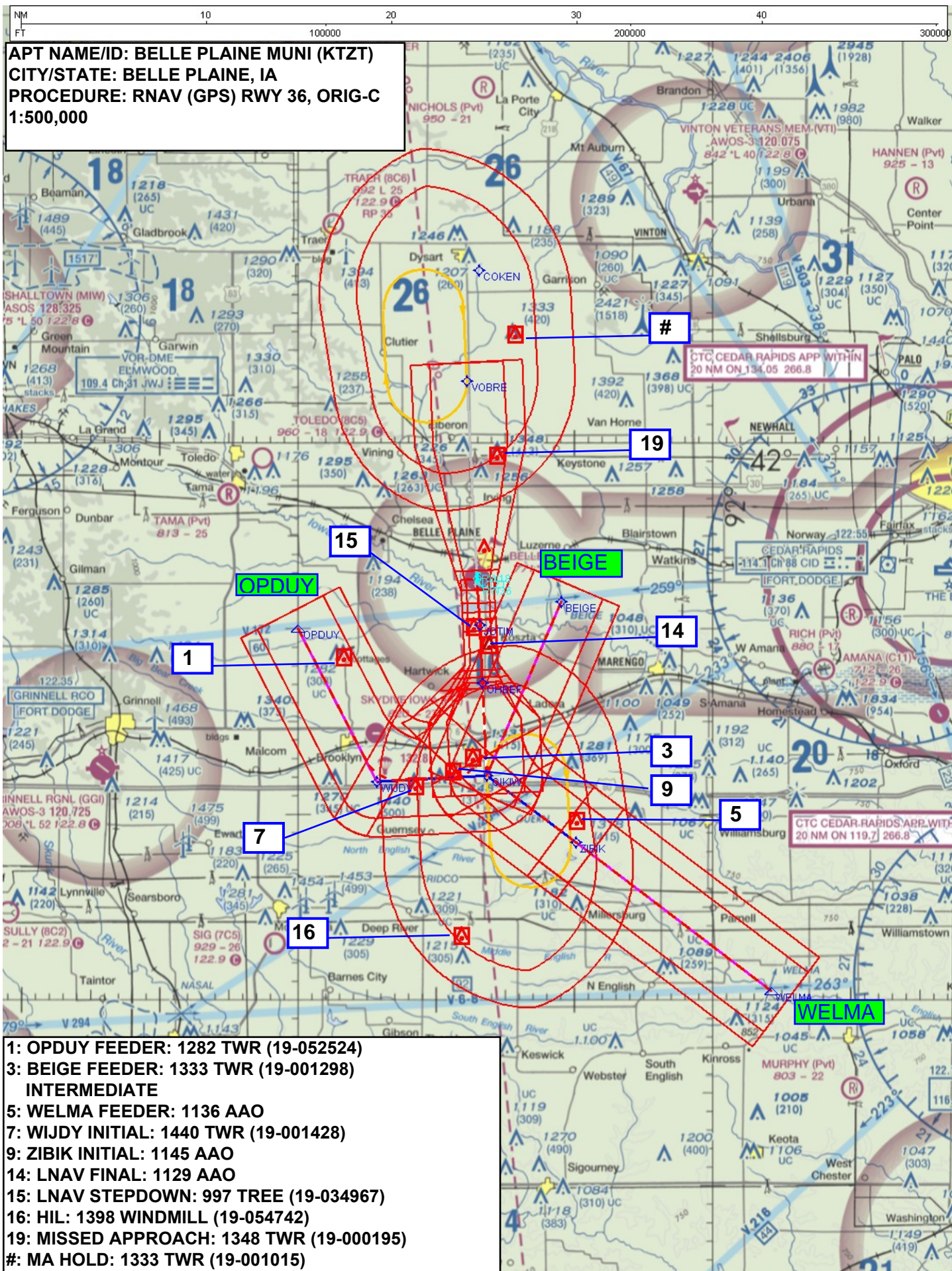
BELLE PLAINE, IOWA  
Orig-B 01FEB18

41°53'N-92°17'W

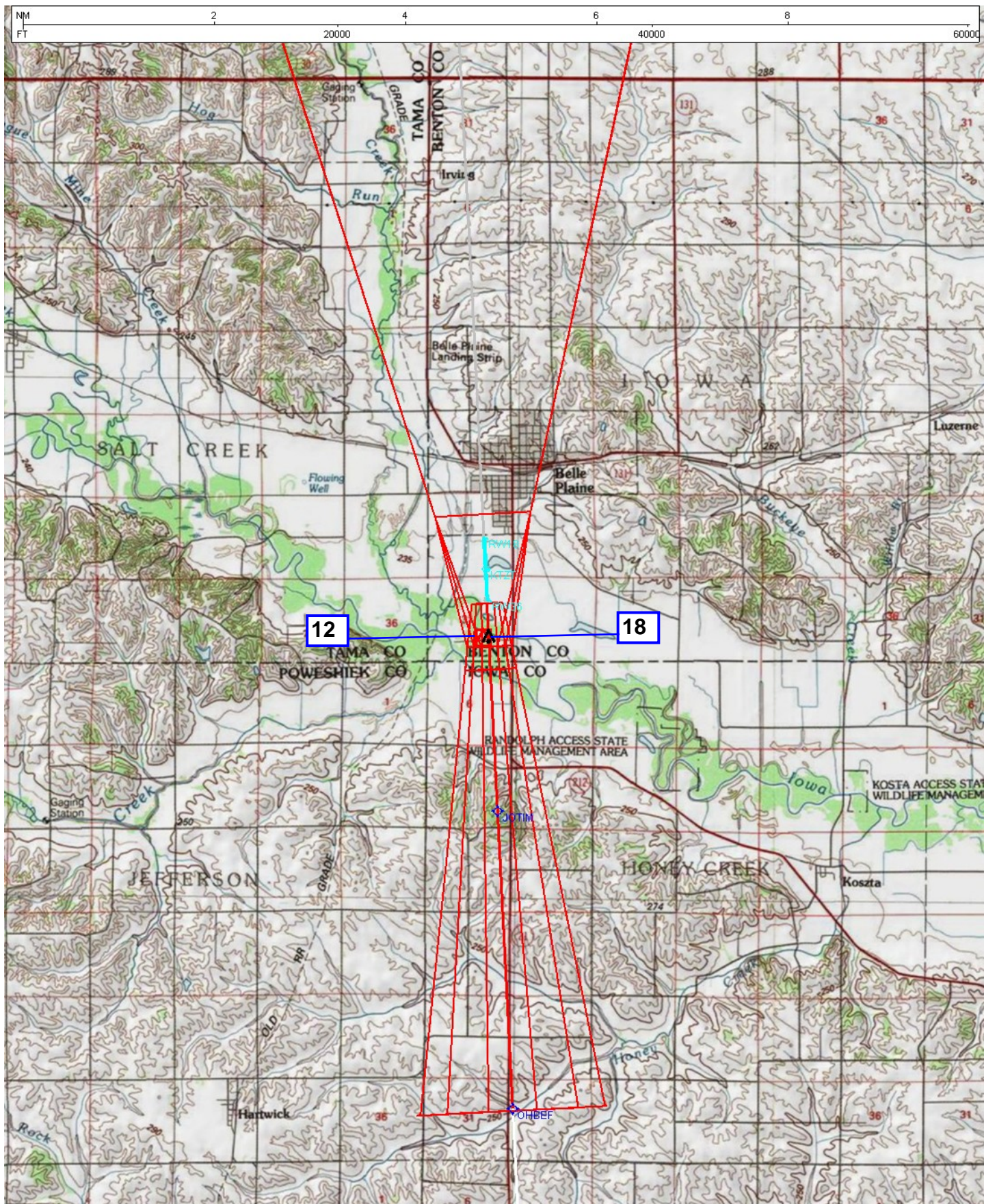
# RNAV (GPS) RWY 36

NC-3: 28 MAR 2019 to 25 APR 2019





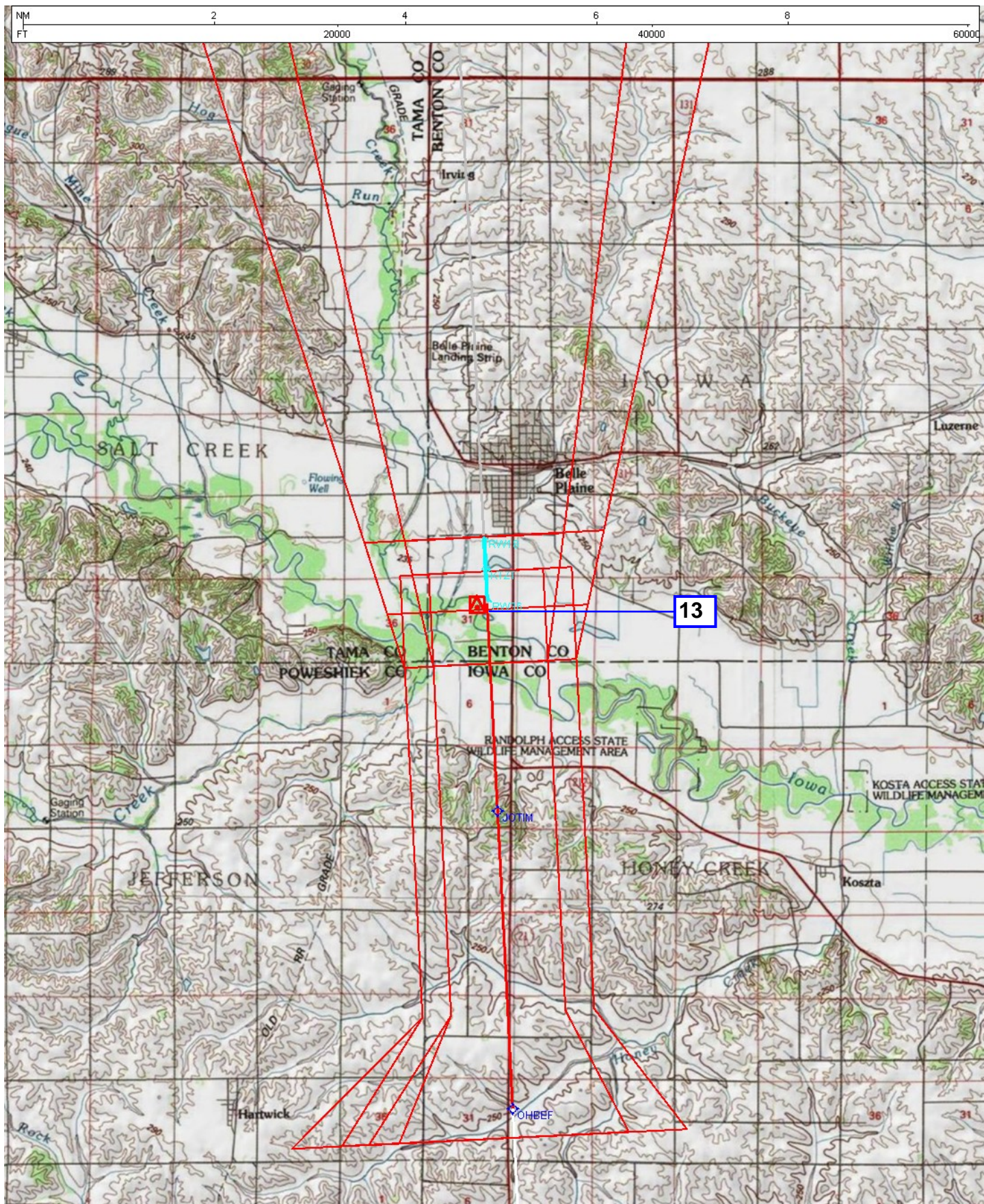




APT NAME/ID: BELLE PLAINE MUNI (KTZT)  
 CITY/STATE: BELLE PLAINE, IA  
 PROCEDURE: RNAV (GPS) RWY 36, ORIG-C  
 1:100,000

12: LPV FINAL: 854 TREE (19-035106)  
 18: LPV MA PENETRATION: 852 TREE (19-034826)





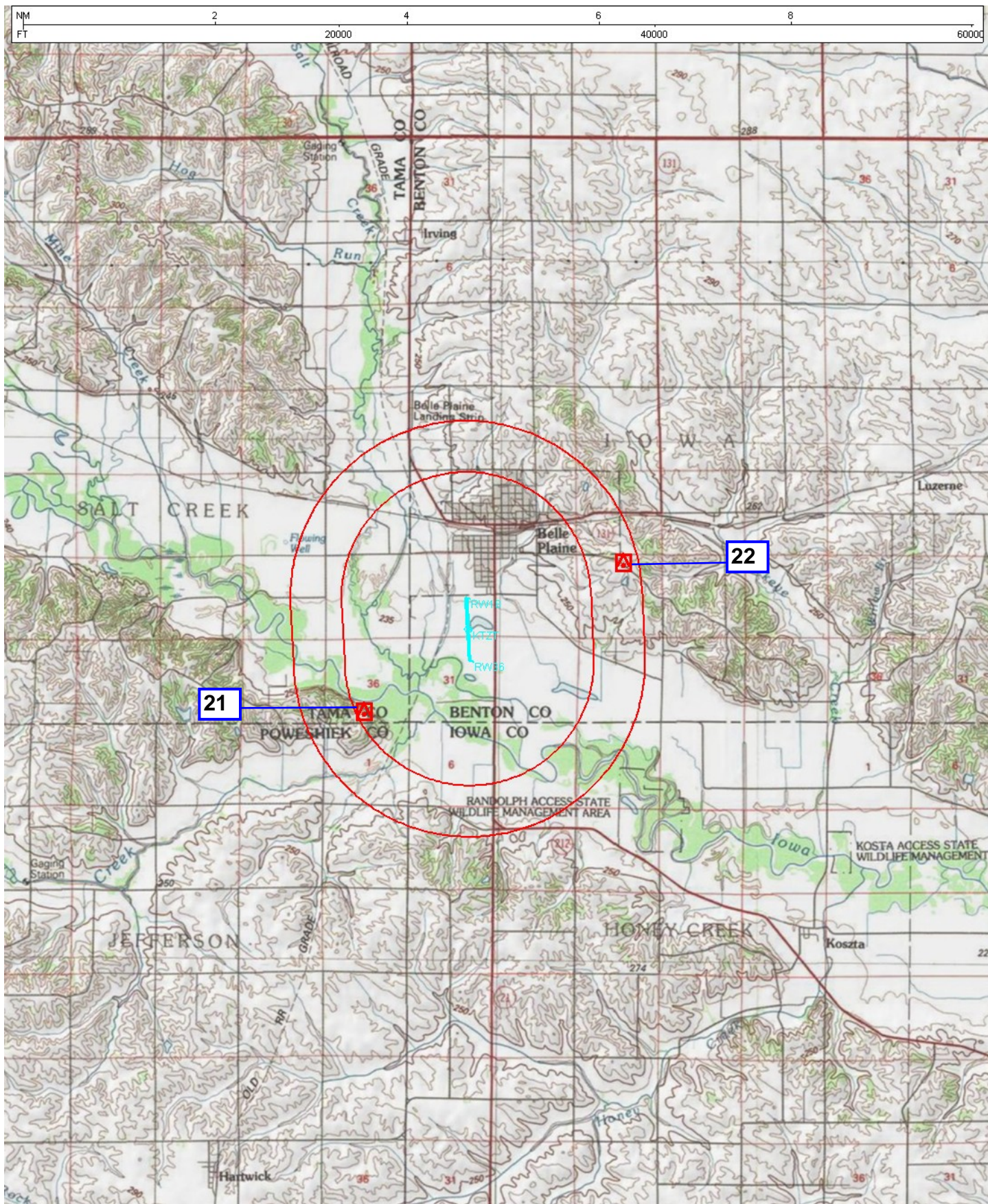
APT NAME/ID: BELLE PLAINE MUNI (KTZT)  
 CITY/STATE: BELLE PLAINE, IA  
 PROCEDURE: RNAV (GPS) RWY 36, ORIG-C  
 1:100,000

13: LNAV/VNAV: 859 TREE (19-034957)









APT NAME/ID: BELLE PLAINE MUNI (KTZT)  
CITY/STATE: BELLE PLAINE, IA  
PROCEDURE: RNAV (GPS) RWY 18, ORIG-C  
1:100,000

21: CIRC CAT A: 973 TREE (19-034991)  
22: CIRC CAT B: 1138 TWR (19-027086)