

Flight Procedure Tracking Form		Action: FLIGHT CHECK	Task Type: IAP	Date Open: 12/18/2018	Task #: 2018121730937301002	Request #: 20181217309373
Procedure: RNAV (GPS) RWY 8 AMDT 1C				Airport ID: KMGJ	Airport: ORANGE COUNTY	Reimbursable #: NO
City: MONTGOMERY	ST: NY	GPS #:	Estimated Chart Date: 01/31/2019		FICO #:	
Fac ID: N/A		Fac. Type:			Specialist: DUSTIN DAVIDSON	
Procedure Review						
	Rec'd	Rel'd	Full Name	Comments		
Lead:	12/17/2018			QUALITY		
QA:				13		
Liaison:				CHECKED		
Procedure Comments:			ENROUTE-NON	Remark Type: INFORMATION		
PENDING DATA USED FOR KMGJ AIRPORT AND RUNWAYS. CONTACT: JACOB POWERS, (405) 954-8702						

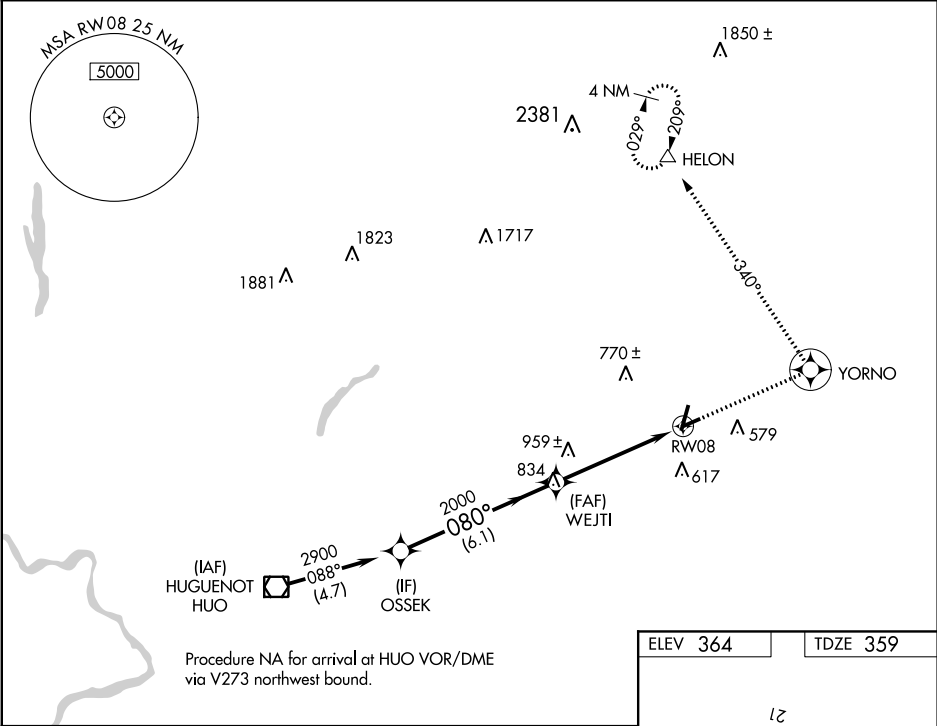
WAAS CH 50216 W08A	APP CRS 080°	Rwy Idg TDZE Apt Elev	3664 359 364
--	------------------------	-----------------------------	---

RNAV (GPS) RWY 8

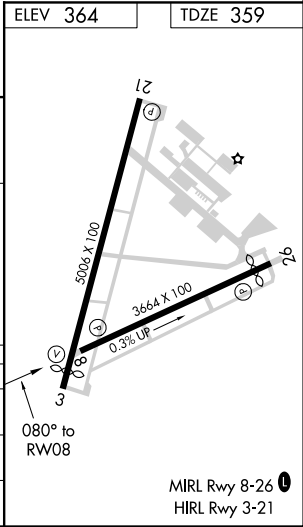
ORANGE COUNTY (MGJ)

<div><div><div></div><div></div></div><div>DME/DME RNP-0.3 NA. Helicopter visibility reduction below ¾ SM NA. When local altimeter setting not received, use Poughkeepsie altimeter setting; increase DA 71 feet and all MDA 80 feet, increase LPV all Cats visibility ¼ mile and increase LNAV and Circling Cats A, C, and D visibility ¼ mile. Night landing: Rwy 21, 26 NA.</div></div>	<div>MISSED APPROACH: Climb to 4900 direct YORNO and left turn via track 340° to HELON and hold, continue climb-in-hold to 4900.</div>
--	--

ASOS 119.275	NEW YORK APP CON 132.75 363.1	CLNC DEL 123.85	UNICOM 122.725 (CTAF)
------------------------	---	---------------------------	---------------------------------



VGSI and RNAV glidepath not coincident (VGSI Angle 3.50/TCH 49).				
<div><div>OSSEK</div><div>WEJTI</div><div>RW08</div><div>2900</div><div>2000</div><div>080°</div><div>6.1 NM</div><div>5 NM</div><div>Procedure Turn NA</div><div>GP 3.00° TCH 40</div></div>				
CATEGORY	A	B	C	D
LPV DA	1059-2½ 700 (700-2½)			
LNAV MDA	1220-1 861 (900-1)	1220-1¼ 861 (900-1¼)	1220-2½ 861 (900-2½)	1220-2¾ 861 (900-2¾)
CIRCLING	1220-1 856 (900-1)	1220-1¼ 856 (900-1¼)	1220-2½ 856 (900-2½)	1220-2¾ 856 (900-2¾)

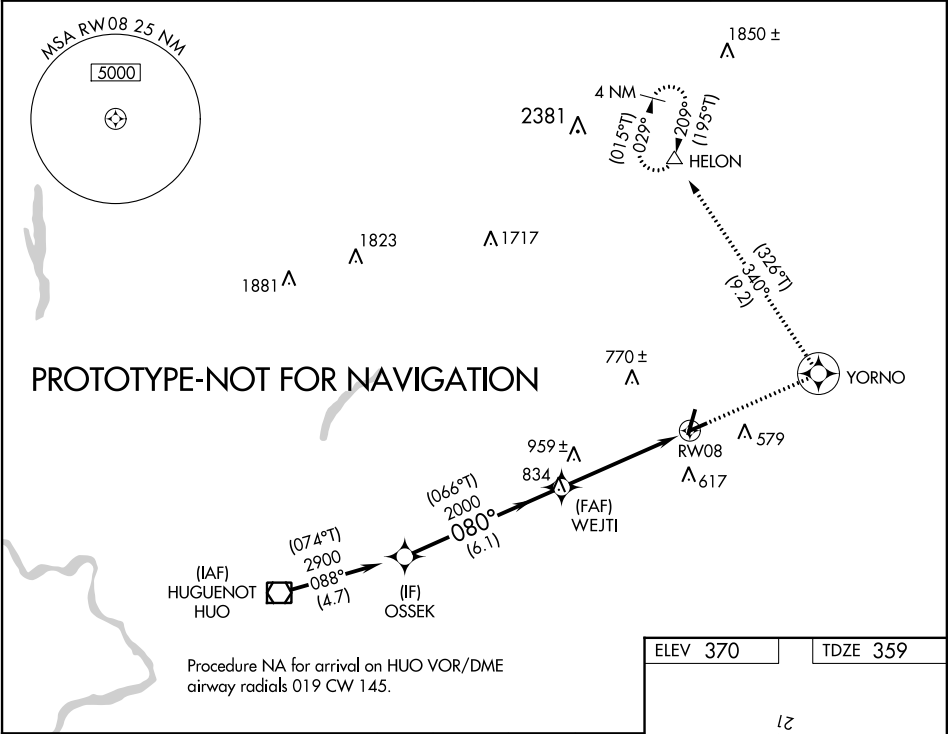



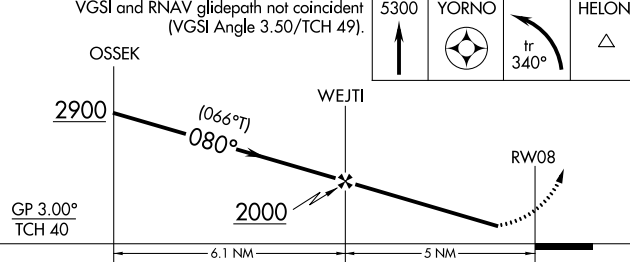

WAAS CH 50216 W08A	APP CRS 080°	Rwy Idg TDZE Apt Elev	3664 359 370
--	------------------------	-----------------------------	---

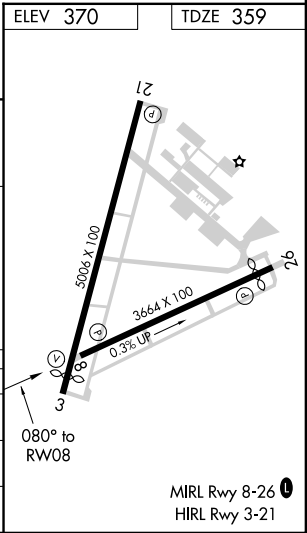
RNAV (GPS) RWY 8

ORANGE COUNTY (MGJ)

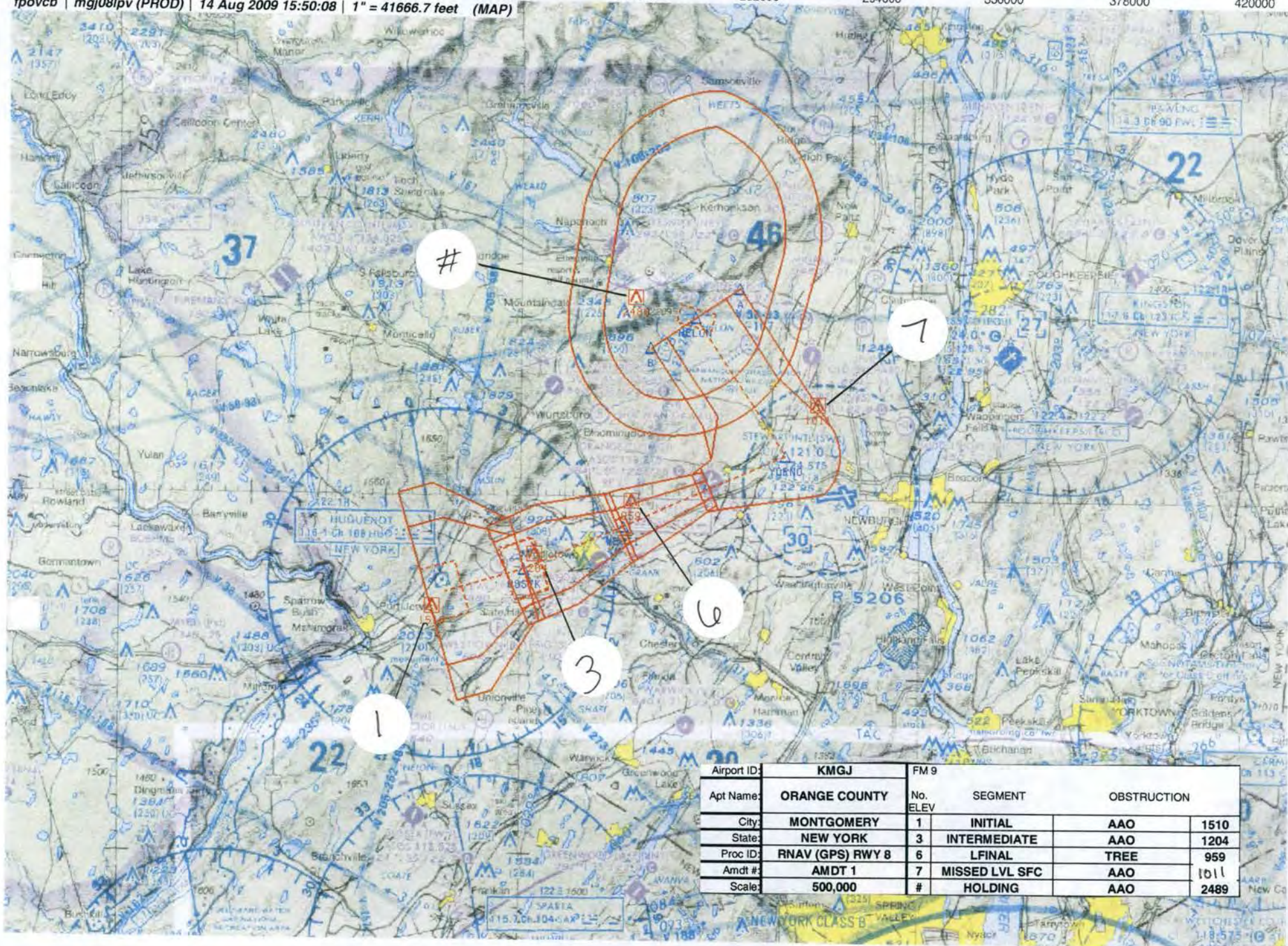
RNP APCH.		MISSED APPROACH: Climb to 5300 direct YORNO and left turn on track 340° to HELON and hold, continue climb-in-hold to 5300.	
<div><div></div><div>Rwy 8 helicopter visibility reduction below 1 SM NA. Straight-in Rwy 8 NA at night, Circling Rwy 8, 22, 26 NA at night.</div></div>			
ASOS 119.275	NEW YORK APP CON 132.75 363.1	CLNC DEL 123.85	UNICOM 122.725 (CTAF) 0



VGSI and RNAV glidepath not coincident (VGSI Angle 3.50/TCH 49).				5300 ↑	YORNO 	HELON △
				tr 340°		
CATEGORY	A		B	C	D	
LPV DA	1059-2½ 700 (700-2½)					
LNAV MDA	1220-1 861 (900-1)	1220-1¼ 861 (900-1¼)	1220-2½ 861 (900-2½)	1220-2¾ 861 (900-2¾)		
 CIRCLING	1220-1¼	850 (900-1¼)	1220-2½ 850 (900-2½)	1220-2¾ 850 (900-2¾)		



NM 7 14 21 28 35 42 49 56 63 70
 FT 42000 84000 126000 168000 210000 252000 294000 336000 378000 420000
 fpovcb | mgj08lpv (PROD) | 14 Aug 2009 15:50:08 | 1" = 41666.7 feet (MAP)



Airport ID:	KMGJ	FM 9			
Apt Name:	ORANGE COUNTY	No. ELEV	SEGMENT	OBSTRUCTION	
City:	MONTGOMERY	1	INITIAL	AAO	1510
State:	NEW YORK	3	INTERMEDIATE	AAO	1204
Proc ID:	RNAV (GPS) RWY 8	6	LFINAL	TREE	959
Amdt #:	AMDT 1	7	MISSED LVL SFC	AAO	1011
Scale:	500,000	#	HOLDING	AAO	2489

