

Flight Procedure Tracking Form		Action: AMENDMENT	Task Type: IAP	Date Open: 12/08/2018	Task #: 2018120829911601001	Request #: 20181208299116
Procedure: ILS OR LOC RWY 31 AMDT 6A			Airport ID: KRYM	Airport: RAY S MILLER AAF		Reimbursable #: NO
City: CAMP RIPLEY	ST: MN	GPS #:	Estimated Chart Date: 10/10/2019		FICO #:	
Fac ID: RYM		Fac. Type: ILS			Specialist: GORDON LEMON	
Procedure Review						
	Rec'd	Rel'd	Full Name	Comments		
Lead:	04/15/2019	05/01/2019	KISSY MAXFIELD	QUALITY Digitally signed by		
QA:	05/01/2019			24 DAVID W SAUER		
Liaison:				CHECKED Jun 13, 2019		
Procedure Comments: ENROUTE-NON Remark Type: INFORMATION ASSIGNED UPDATE PROCEDURE IAW NOTAM FDC 8/0788 - REMOVAL OF AUTOPILOT LIMITATION. PROCESSED IAW AIRCRAFT OPERATIONS GROUP (AJW-33) MEMO, OCTOBER 3, 2018, SUBJECT: FLIGHT INSPECTION REVIEW NOT REQUIRED. CONTACT: WARDELL HENNING: 405.954.9954.						

OLD

CAMP RIPLEY, MINNESOTA

18200

ILS or LOC RWY 31

LOC I-RYM 111.1 Chan 48	APCH CRS 312°	Rwy Idg 6100 TDZE 1149 Arpt Elev 1150
---	-------------------------	--

AL-5226 [USA]

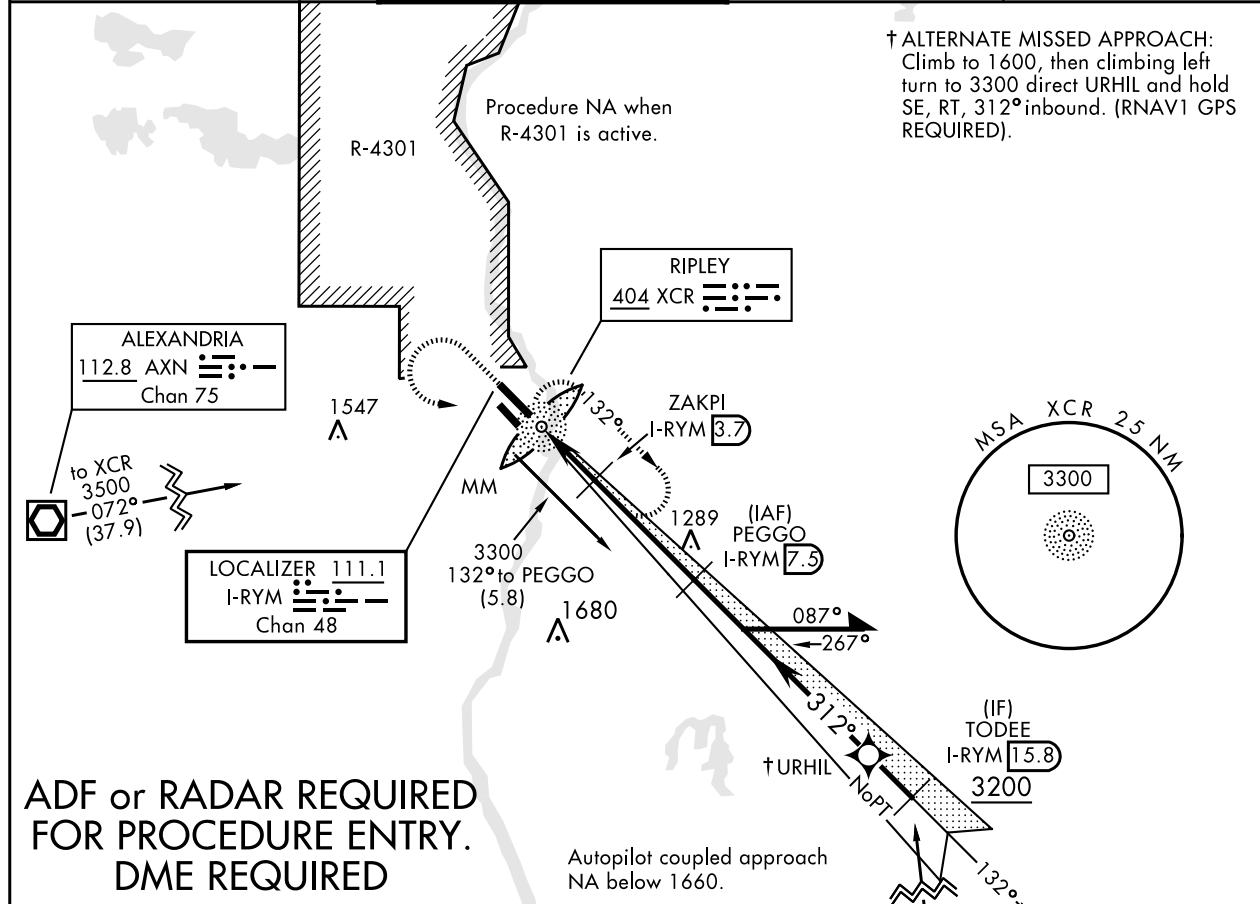
RAY S. MILLER AAF (KRYM)

▼ When local altimeter setting not received,
use Little Falls altimeter setting.
▲ NA

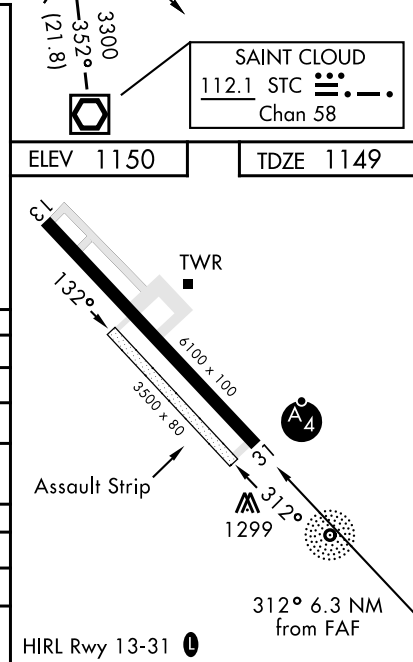


† MISSED APPROACH: Climb to 2000, then climbing
left turn to 3500 direct XCR NDB and hold. Continue
climb in hold to 3500.

MINNEAPOLIS CENTER 118.05 239.0	MILLER TOWER ★ 126.2 254.4 46.7	CLNC DEL 126.2	AWOS-3 142.95
---	---	--------------------------	-------------------------



2000	3500	XCR	†† LOC Only	PEGGO	5000	7.5	132°	3300	Remain within 10 NM of PEGGO
VDP NA with Little Falls altimeter setting.									
I-RYM DME	ZAKPI	3.7	2.4	MM	1345	1.2	312°	3200	GS 3.00° TCH 40
2.5 NM 3.8 NM									
CATEGORY	A	B	C	D					
S-ILS 31	1346-¾		200	(200-¾)					
S-LOC 31	1580-¾	434	(500-¾)	1580-1	434	(500-1)			
CIRCLING	1640-1	1660-1	1720-1½	2080-3					
	490 (500-1)	510 (600-1)	570 (600-1½)	930 (1000-3)					
LITTLE FALLS ALTIMETER SETTING MINIMUMS									
S-ILS 31	1370-¾		224	(300-¾)					
S-LOC 31	1620-¾	474	(500-¾)	1620-1	474	(500-1)			
CIRCLING	1680-1	1700-1	1760-1½	2120-3					
	530 (600-1)	550 (600-1)	610 (700-1½)	970 (1000-3)					



CAMP RIPLEY, MINNESOTA

46°05'N-94°21'W

RAY S. MILLER AAF (KRYM)

Amdt 6 19JUL18

ILS or LOC RWY 31

NC-1, 25 APR 2019 to 23 MAY 2019

NC-1, 25 APR 2019 to 23 MAY 2019