


Flight Procedure Tracking Form		Action: AMENDMENT	Task Type: IAP	Date Open: 12/07/2018	Task #: 2018120733660601004	Request #: 20181207336606
Procedure: RNAV (GPS) RWY 36 AMDT 1A			Airport ID: KAWG	Airport: WASHINGTON MUNI		Reimbursable #: NO
City: WASHINGTON	ST: IA	GPS #:	Estimated Chart Date: 06/20/2019		FICO #:	
Fac ID: N/A		Fac. Type:		Specialist: DEANNA FIELDS		
Procedure Review						
	Rec'd	Rel'd	Full Name	Comments		
Lead:	12/27/2018	02/06/2019	DAVID DANNER			
QA:	02/06/2019					
Liaison:						
Procedure Comments:			Remark Type: INFORMATION			
<p>P NOTAM.</p> <p>ACTIVE AIRNAV DATA, CHART DATE: 03/02/2017.</p> <p>CIRCLING CAT B NEW OBSTACLE DATA: 19-054542, 184 AGL/943 MSL TOWER 411806.76N/0914119.91W, (1A).</p> <p>PROCESSED IAW AIRCRAFT OPERATIONS GROUP (AJW-33) MEMO, OCTOBER 3, 2018, SUBJECT: FLIGHT INSPECTION REVIEW NOT REQUIRED.</p> <p>CONTACT: DAVID DANNER, SUB-TEAM MANAGER, IFP TEAM 2, 405.954.5077 (OR) JULIE MORGAN, MANAGER, AJV-542, INSTRUMENT FLIGHT PROCEDURES TEAM 2, 405.954.8568.</p> <p>THIS CANCEL NOTAM FDC 8/3223.</p>						

RNAV (GPS) RWY 36

WASHINGTON MUNI (AWG)

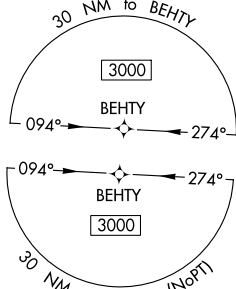
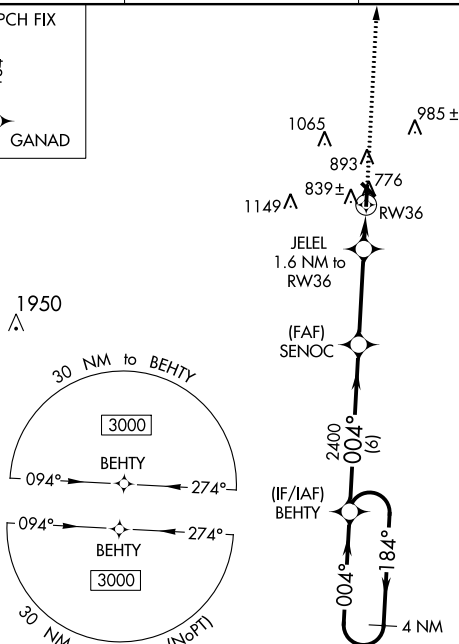
WAAS CH 90416 W36A	APP CRS 004°	Rwy Idg 4000 TDZE 752 Apt Elev 754
--	------------------------	---

T For uncompensated Baro-VNAV systems, LNAV/VNAV NA below -6°C (22°F) or above 54°C (130°F). DME/DME RNP-0.3 NA. Baro-VNAV and VDP NA when using Iowa City altimeter setting. When local altimeter setting not received, use Iowa City altimeter setting: increase LPV DA to 1064 feet, LNAV/VNAV DA to 1072 feet; increase all MDA 80 feet and LNAV and Circling visibility Cat C ¼ mile.

MISSED APPROACH: Climb to 3000
direct GANAD and hold.

AWOS-3 127.825	CHICAGO CENTER 135.6 370.95	GCO 121.725	UNICOM 122.7 (CTAF) 0
--------------------------	---------------------------------------	-----------------------	---------------------------------

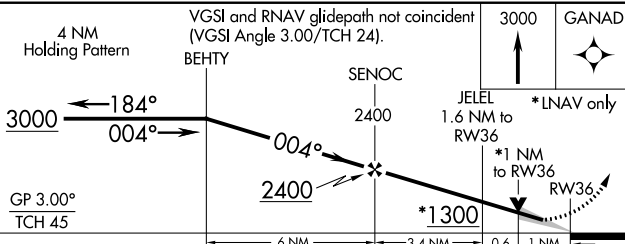
MISSED APCH FIX




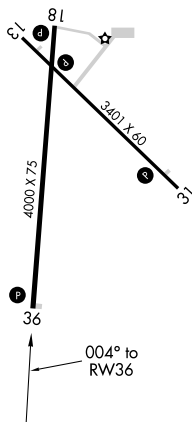
ELEV 754		TDZE 752
----------	--	----------

MIRL R_{WVS} 13-31 and 18-36 **L**

REIL Rwy 18, 13, 31 and 36 L



CATEGORY	A	B	C	D
LPV DA	1002-1 250 (300-1)			NA
LNAV/ VNAV DA	1010-1 258 (300-1)			NA
LNAV MDA	1100-1 348 (400-1)			NA
 CIRCLING	1200-1 446 (500-1)	1240-1 486 (500-1)	1500-2¼ 746 (800-2¼)	NA



WASHINGTON MUNI (AWG)

41°17'N-91°41'W

RNAV (GPS) RWY 36

NC-3, 31 JAN 2019 to 28 FEB 2019

NC-3, 31 JAN 2019 to 28 FEB 2019

AWG
WASHINGTON MUNI
WASHINGTON, IA
RNAV (GPS) RWY 36, AMDT 1A
1:100, 000

CIRCLING

