

Flight Procedure Tracking Form		Action: FLIGHT CHECK	Task Type: IAP	Date Open: 12/07/2018	Task #: 2018120733047701002	Request #: 20181207330477
Procedure: VOR RWY 22 AMDT 1A			Airport ID: KAMA	Airport: RICK HUSBAND AMARILLO INTL		Reimbursable #: NO
City: AMARILLO	ST: TX	GPS #:	Estimated Chart Date: 10/10/2019		FICO #: 1230232	
Fac ID: PNH		Fac. Type: VORTAC			Specialist: STEVEN SCHUTRUM	
Procedure Review						
	Rec'd	Rel'd	Full Name	Comments		
Lead:	12/10/2018	06/12/2019	DONALD LANIER	Digitally signed by		
QA:	06/12/2019	07/08/2019	BEV L BORDY	WARDELL HENNING		
Liaison:	07/08/2019	07/08/2019	MARY MCDONALD	Aug 23, 2019		
Procedure Comments: ENROUTE-NON Remark Type: INFORMATION CLEAR FDC NOTAM 8/0138. ACTIVE AIRPORT DATA USED FOR KAMA ACTIVE DATA USED FOR PNH VORTAC . CONTACT: WARDELL HENNING: 405.954.9954 08/21/2019: THIS IS A CORRECTED COPY OF THE FORM APPROVED ON: 07/07/2019: 1. DELETED MIAOW/PNH 11.00 DME 5300" FROM PROFILE LINE 4.						



QUALITY
 18
 CHECKED

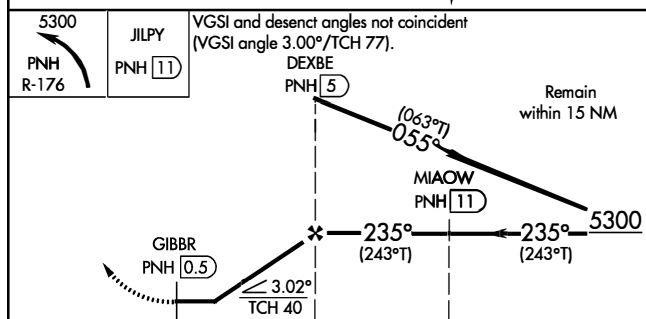
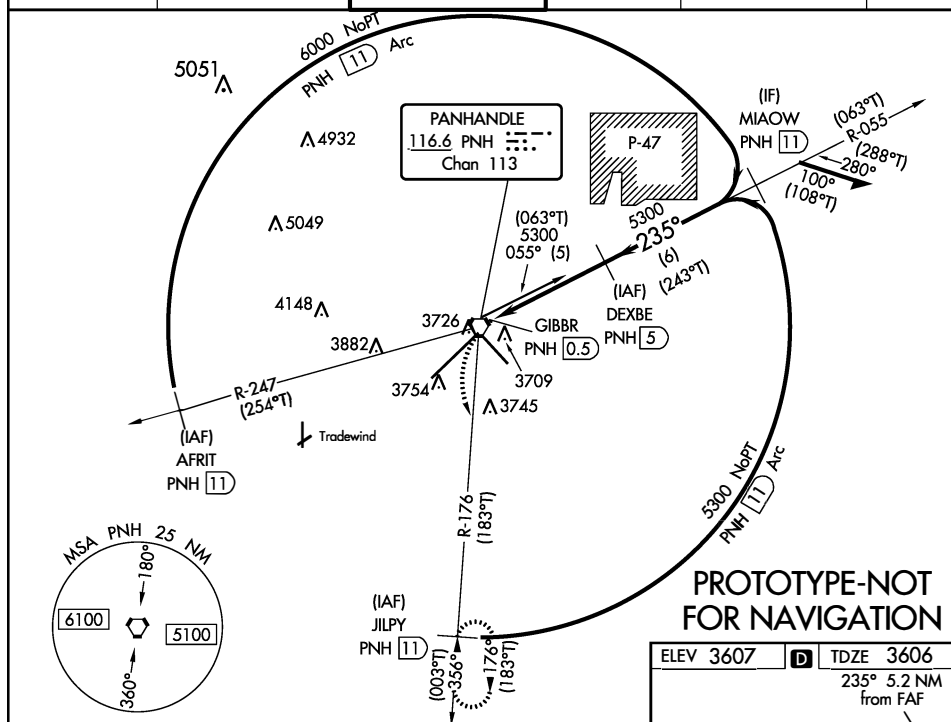
[illegible]

VORTAC PNH 116.6 Chan 113	APP CRS 235°	Rwy Idg TDZE Apt Elev	13502 3606 3607
---	------------------------	-----------------------------	--

VOR RWY 22

RICK HUSBAND AMARILLO INTL (AMA)

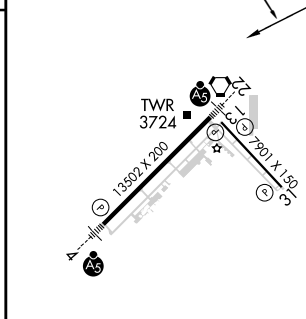
DME required.  For inop ALS, increase CAT C visibility to 1 SM.		MALSR 	MISSED APPROACH: Climbing left turn to 5300 on PNH R-176 to JILPY/11 DME and hold.		
ATIS 118.85 350.3	AMARILLO APP CON★ 119.5 307.0	AMARILLO TOWER★ 118.3 (CTAF) 257.9	GND CON 121.9 348.6	CLNC DEL 121.65 239.275	UNICOM 122.95



CATEGORY	A	B	C	D	E
S-22	3960-1/2 354 (400-1/2)		3960-3/4 354 (400-3/4)	3960-1 354 (400-1)	
CIRCLING	4080-1 473 (500-1)		4240-1 3/4 633 (700-1 3/4)	4280-2 1/4 673 (700-2 1/4)	4460-3 853 (900-3)

ELEV 3607	TDZE 3606
-----------	-----------

235° 5.2 NM from FAF



REIL Rwy 13	
REIL Rwy 31	
HIRL Rwy 4-22 and 13-31	

VORTAC PNH

116.6

Chan 113

APP CRS

235°

Rwy Idg

13502

TDZE

3603

Apt Elev

3605

OLD

VOR/DME RWY 22

RICK HUSBAND AMARILLO INTL (AMA)

ASR

For inop MALSRS, increase S-22 visibility Cat D and E to 1¼.

MALS R

MISSED APPROACH: Climbing left turn to 5100 via PNH R-176 to JILPY/11 DME and hold.

ATIS	AMARILLO APP CON★	AMARILLO TOWER★	GND CON	CLNC DEL	UNICOM
118.85 350.3	119.5 307.0	118.3(CTAF) 257.9	121.9 348.6	121.65 239.275	122.95

The main enroute chart displays the following information:

- Navigation Aids:** VORTAC PNH (116.6 MHz, Chan 113), MALS R, and TWR 3724.
- Altitudes:** 5051, 4932, 5049, 4148, 3882, 3726, 3754, 3697, 3745, 5300, 5055 (5), 5300 (6).
- Obstacles:** P-47, (IAF) DEXBE PNH (5).
- Procedures:** PANHANDLE 116.6 PNH Chan 113, (IAF) JILPY PNH (11), (IAF) DEXBE PNH (5).
- Angles and Distances:** 6000 NoPT Arc, 5300 NoPT Arc, 235°, 055°, 176°, 356°, 100°, 280°, 180°, 360°.
- Other:** Tradewind, R-247, R-055, R-176.

MSA PNH 25 NM diagram showing altitudes of 6100 and 5100, and angles of 180° and 360°.

5100

JILPY

PNH R-176

PNH (11)

DEXBE

PNH (5)

Remain within 15 NM

PNH (0.5)

055°

235°

5300

≤ 3.02°

TCH 40

0.7

4.5 NM

CATEGORY	A	B	C	D	E
S-22	3960-½ 354 (400-½)			3960-1 354 (400-1)	
CIRCLING	4080-1 473 (500-1)	4080-1½ 473 (500-1½)		4240-2 633 (700-2)	4460-3 853 (900-3)

ELEV 3607

D

TDZE 3606

235° 5.2 NM from FAF

TWR 3724

REIL Rwy 31

HIRL Rwy 4-22 and 13-31

REIL Rwy 13

REIL Rwy 31

HIRL Rwy 4-22 and 13-31

13502 X 200

7001 X 150

AMARILLO, TEXAS
Amdt 1 08AUG02

35°13'N-101°42'W

RICK HUSBAND AMARILLO INTL (AMA)
VOR/DME RWY 22

NM 7 14 21 28 35 42 49
FT 42000 84000 126000 168000 210000 252000 294000

fposrs | ama_v22 (PROD) | 7 May 2019 14:31:06 | 1" = 041666.7 feet (MAP)

