

Flight Procedure Tracking Form		Action: FLIGHT CHECK	Task Type: IAP	Date Open: 11/14/2018	Task #: 2018111429968901002	Request #: 20181114299689
Procedure: COPTER RNAV (GPS) Z RWY 32 ORIG			Airport ID: K0B1	Airport: BETHEL RGNL		Reimbursable #: NO
City: BETHEL	ST: ME	GPS #:	Estimated Chart Date: 01/30/2020		FICO #: 1226064	
Fac ID: N/A		Fac. Type:		Specialist: CHRISTINE BAYSE		
Procedure Review						
	Rec'd	Rel'd	Full Name	Comments		
Lead:	11/14/2018	03/21/2019	WARDELL HENNING	Digitally signed by		
QA:	03/21/2019	03/22/2019	KISSY MAXFIELD	WARDELL HENNING		
Liaison:	03/22/2019	03/22/2019	MARY MCDONALD	Jul 19, 2019		
Procedure Comments: ENROUTE-NON Remark Type: INFORMATION SPECIAL USE PROCEDURE ACTIVE DATA USED FOR K0B1 AIRPORT AND RUNWAYS DATED 9/13/18. CONTACT: PAT MULQUEEN 405-954-4073 OR WARDELL HENNING 405-436-1902 03/21/19: THIS IS AN UPDATED COPY OF THE FORM DEVELOPED ON 01/18/19. 1. UPDATED TERMINAL ROUTES FROM 1074 MSL TO ZUVUS ALTITUDE FROM 5000 TO 5700. 2. UPDATED MISSED APPROACH INSTRUCTIONS FROM "CLIMBING LEFT TURN TO 5000 DIRECT ZUVUS AND HOLD, CONTINUE CLIMB-INHOLD TO 5000" TO "CLIMBING LEFT TURN TO 5700 DIRECT ZUVUS AND HOLD, CONTINUE CLIMB-IN-HOLD TO 5700". 03/21/19: THIS IS AN UPDATED COPY OF THE ZUVUS 8260-2 FORM DEVELOPED ON 01/18/19. 1. UPDATED HOLDING PAT 1 MIN AND MAX ALTITUDE FROM 5000/6000 TO 5700/6700. 07/17/19: THIS IS AN UPDATED COPY OF THE FORM DEVELOPED ON 01/18/19. 1. REMOVED CHART NOTE: UTILIZATION OF NIGHT VISION GOGGLES REQUIRED AT NIGHT AND CHART NOTE: MAINTAIN 1220 UNTIL CROSSING RWY 32 THRESHOLD. 2. CHANGED 20:1 IS NOT CLEAR TO 20:1 IS CLEAR. 3. REMOVED CHART 728 TREE 442516N/0704759W, 736 TREE 442515N/0704756W FROM ADDITIONAL FLIGHT DATA.						



From: [Lavielle, Christy CTR \(FAA\)](#)
To: ["AMC-AJV-IFP-ProdCoordTeam"](#)
Subject: OB1
Date: Wednesday, April 24, 2019 9:35:42 AM
Importance: High

Good Morning,

The **COPTER RNAV (GPS) Z RWY 32 ORIG** package is being returned for the following reason(s):

A consensus was reached among the assignees for Copter RNAV (GPS) Z RWY 32 to be sent back for redesign ahead of the PRB.

The design/waiver is not supported in favor of the operational benefits produced. This would include: the use of NVG is not supported on the waiver due to not being allowed operational credit, the increase of altitude on the waiver resulting in an increased descent rate, crossing the threshold at 1220 ft, and the final segment offset causing the 20:1 penetrations.

What *is* supported is the yellow design option identified in separate correspondence. The yellow design would give the operator Day/Night mins, maintain lower mins without the 20:1 penetrations, and a similar final to the public procedure all without the need for a waiver.

We are also returning the **COPTER RNAV (GPS) 317 ORIG** as we don't want it to get separated from the "new" procedure since they need to be processed concurrently. No changes are required for this cancel.

Christy Nettleton-Lavielle
Senior 1 Business Analyst /TEAPSS II Contract
Flight Procedures and Airspace Group (OKC)
Email: Christy.CTR.Lavielle@faa.gov
Phone: 405-954-0642

RNP APCH

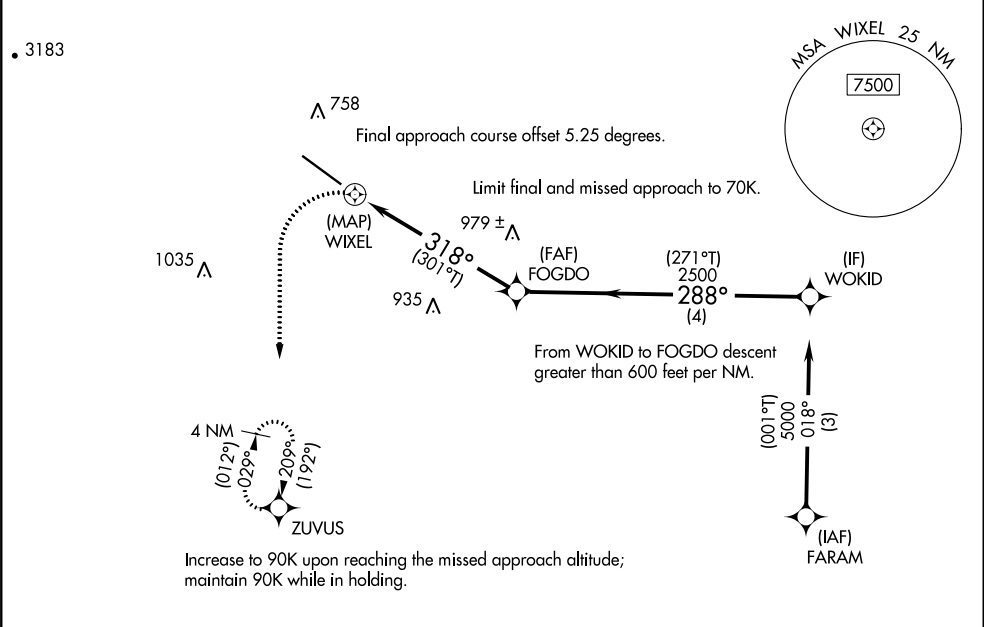
▲ NA

Use of this procedure requires specific authorization by FAA Flight Standards.
When local altimeter setting not received, use Augusta altimeter setting and increase all MDAS 160 feet.

MISSED APPROACH: Climbing left turn to 5700 direct ZUVUS and hold, continue climb-in-hold to 5700.

AWOS-AV
122.9 (CTAF) 0

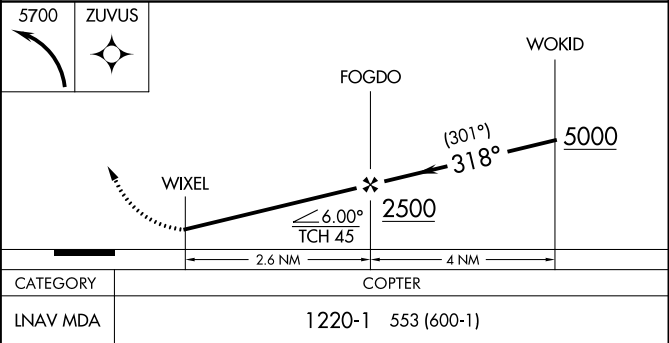
PORTLAND ★
125.5 269.35



ELEV 674

TDZE 667

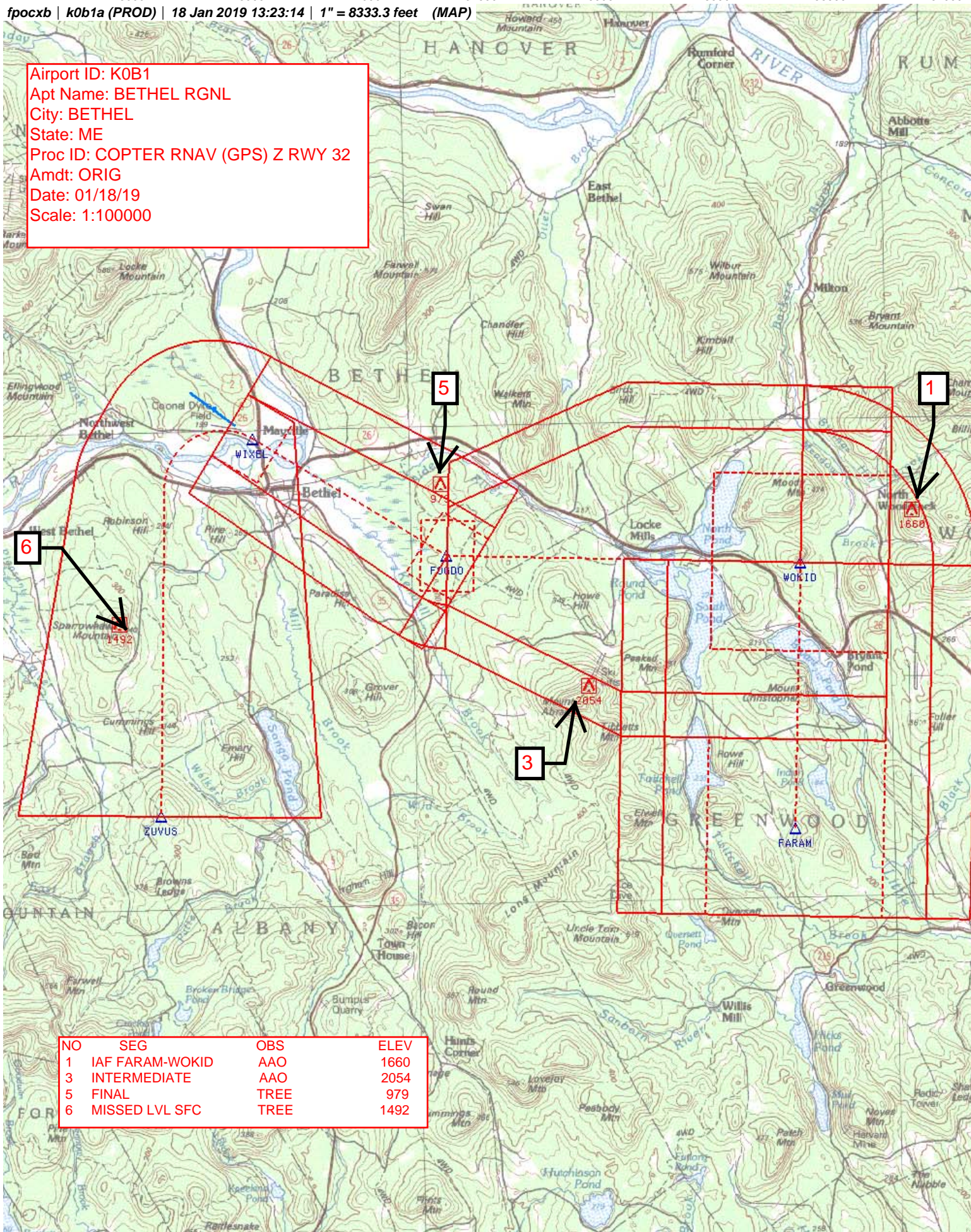
PROTOTYPE- NOT FOR NAVIGATION



NM 1 2 3 4 5 6 7 8 9 10
FT 8000 16000 24000 32000 40000 48000 56000 64000

fpocxb | k0b1a (PROD) | 18 Jan 2019 13:23:14 | 1" = 8333.3 feet (MAP)

Airport ID: K0B1
Apt Name: BETHEL RGNL
City: BETHEL
State: ME
Proc ID: COPTER RNAV (GPS) Z RWY 32
Amdt: ORIG
Date: 01/18/19
Scale: 1:100000



NO	SEG	OBS	ELEV
1	IAF FARAM-WOKID	AAO	1660
3	INTERMEDIATE	AAO	2054
5	FINAL	TREE	979
6	MISSSED LVL SFC	TREE	1492

fpoctxb | k0b1a (PROD) | 18 Jan 2019 13:15:52 | 1" = 41666.7 feet (MAP)

ipocxb | K0b1a (PROD) | 18 Jan 2019 13:15:52 | 1" = 41666.7 feet (MAP)

Stewartstown Hollow power station

Airport ID: K0B1
 Apt Name: BETHEL RGNL
 City: BETHEL
 State: ME
 Proc ID: COPTER RNAV (GPS) z RWY 32
 Amdt: ORIG
 Date: 01/18/19
 Scale: 1:500000

RANGELEY
 221 RCM

SPECIAL MILITARY ACTIVITY
 CONTACT BANGOR RADIO
 ON 122.55 255.4
 * FOR ACTIVITY STATUS

1
 2
 3
 4
 5
 6

NO	SEG	OBS	ELEV
1	IAF FARAM-WOKID	AAO	1660
3	INTERMEDIATE	AAO	2054
5	FINAL	TREE	979
6	MISSIED LVL SFC	TREE	1492
*	MISSIED HOLDING	AAO	3383

NO	SEG	OBS	ELEV
1	IAF FARAM-WOKID	AAO	1660
3	INTERMEDIATE	AAO	2054
5	FINAL	TREE	979
6	MISSSED LVL SFC	TREE	1492
*	MISSSED HOLDING	AAO	3383

Federal Aviation Administration Categorical Exclusion Declaration

Date: 07/11/2018

IFP: Reddinger, Shawn (Shawn.Reddinger@faa.gov)

Airport Contact: N/A

Request ID: 0B1_180402_21

Single or Multiple Procedure:

Multiple

Procedure Name(s):

RNAV (GPS) RWY 32 ORIG, ODP textual non-routed departure

Procedure Request Description:

New RNAV (GPS) RWY 32 approach, 7 NM Initial segments in a "T" configuration. Procedure for life flight operation.

Declaration of Exclusion:

The FAA has reviewed the above referenced proposed action and it has been determined, by the undersigned, to be categorically excluded from further environmental documentation according to FAA Order 1050.1, "Environmental Impacts: Policies and Procedures." The implementation of this action will not result in any extraordinary circumstances in accordance with FAA Order 1050.1.

Basis for this Determination:

This review was conducted in accordance with policies and procedures in Department of Transportation Order 5610.1, "Procedures for Considering Environmental Impacts" and FAA Order 1050.1.

The applicable Categorical Exclusion is:

5-6.5.j: Implementation of procedures to respond to emergency air or ground safety needs, accidents, or natural events with no reasonably foreseeable long-term adverse impacts. (ATO)

The above flight procedure has been developed within the accepted parameters.

Concurrence/Reviewed By: Andrew Pieroni Date: July 11, 2018

Title: Environmental Protection Specialist

Approved By: Debra L Hogan Date: 7/12/18

Title: Manager, Airspace and Procedures (North)