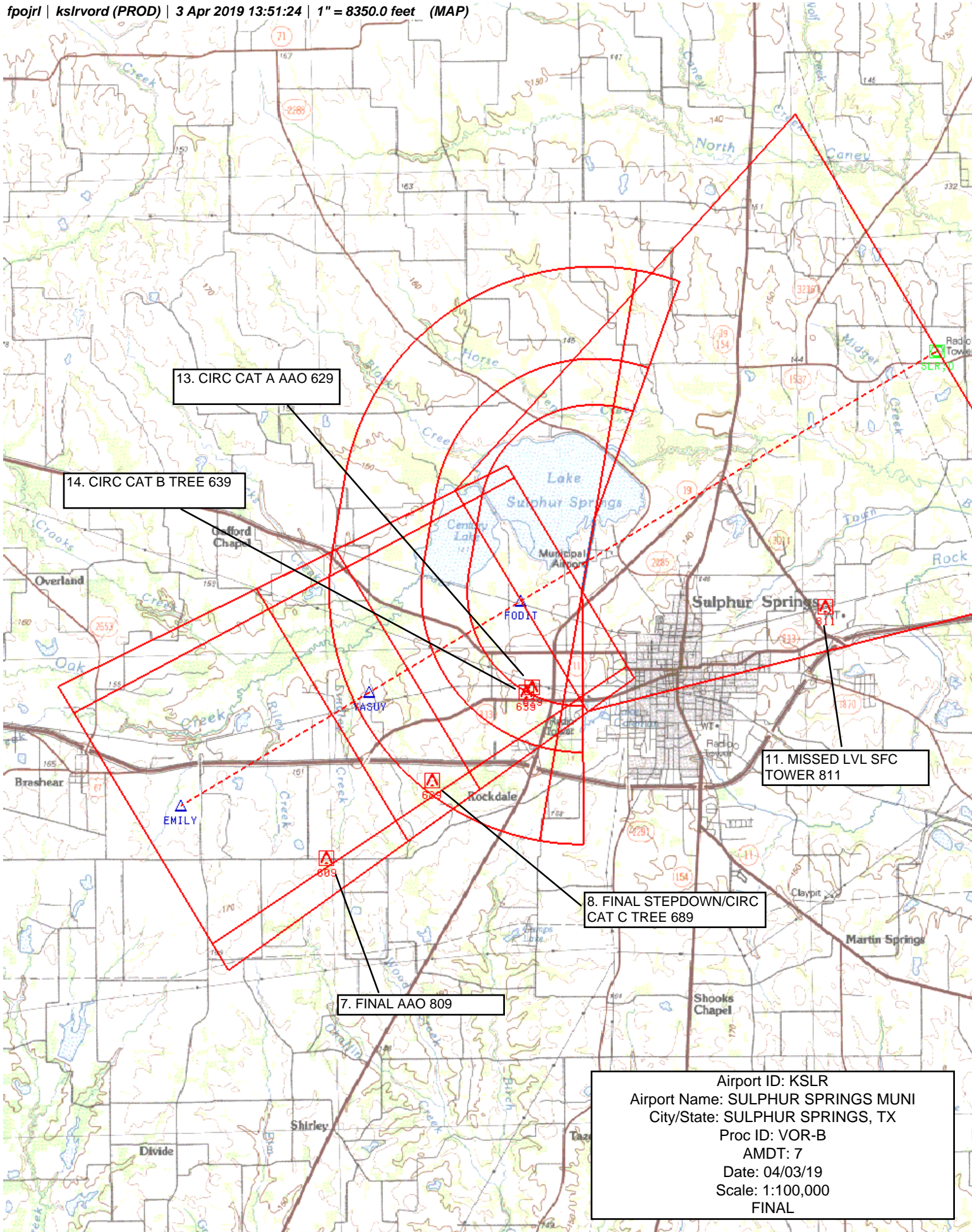


Flight Procedure Tracking Form		Action: AMENDMENT	Task Type: IAP	Date Open: 11/09/2018	Task #: 2018110929573001001	Request #: 20181109295730
Procedure: VOR-B AMDT 7			Airport ID: KSLR	Airport: SULPHUR SPRINGS MUNI		Reimbursable #: NO
City: SULPHUR SPRINGS	ST: TX	GPS #:	Estimated Chart Date: 10/10/2019		FICO #:	
Fac ID: SLR		Fac. Type: VOR_DME			Specialist: JOHN LINDSEY	
Procedure Review						
	Rec'd	Rel'd	Full Name	Comments		
Lead:	11/16/2018			QUALITY		
QA:				22 5.3.2019 BD		
Liaison:				CHECKED		
Procedure Comments: ENROUTE Remark Type: INFORMATION ACTIVE AIRPORT DATA USED ACTIVE SLR VOR/DME DATA USED CONTACT DAVID DANNER (405) 954-5077 OR MARLON J. ROBINSON (405) 954-3636.						

NM 1 2 3 4 5 6 7 8 9 10
FT 8000 16000 24000 32000 40000 48000 56000 64000

fpojrl | kslrvord (PROD) | 3 Apr 2019 13:51:24 | 1" = 8350.0 feet (MAP)



Airport ID: KSLR
 Airport Name: SULPHUR SPRINGS MUNI
 City/State: SULPHUR SPRINGS, TX
 Proc ID: VOR-B
 AMDT: 7
 Date: 04/03/19
 Scale: 1:500,000
 FINAL

7. FINAL AAO 809

5. INTERMED TOWER 941

3. INITIAL TOWER 1011

11. MISSED LVL SFC/
MISS HOLD TOWER 811

8. FINAL STEPDOWN TREE 689

9. PT MANEUVER TOWER 1021

1. FEEDER TOWER 932

SULPHUR SPRINGS, TEXAS

AL-5559 (FAA)

19115

VOR/DME SLR 109.0 Chan 27	APP CRS 051°	Rwy Idg TDZE Apt Elev N/A N/A 489
---	------------------------	---

OLD

VOR/DME-B
SULPHUR SPRINGS MUNI (SLR)

**NA**

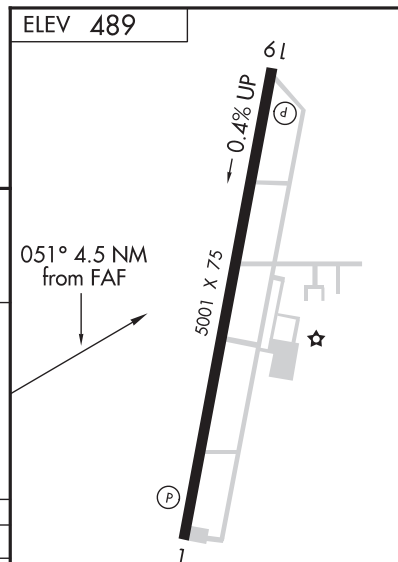
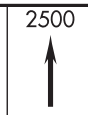
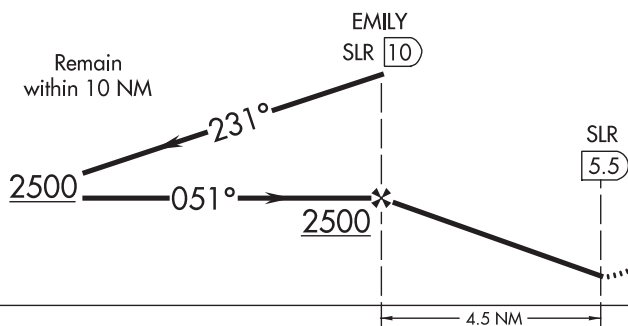
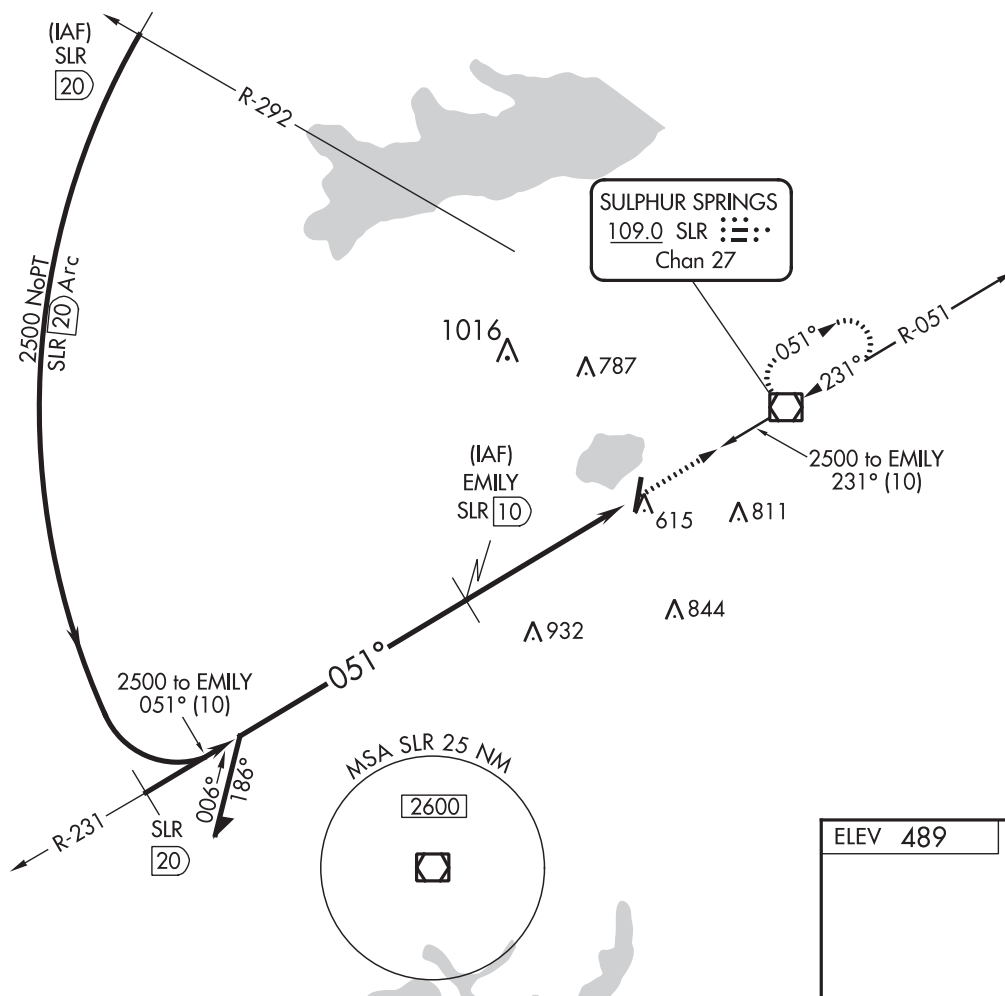
Obtain local altimeter setting on CTAF; when not received, use Cox Field altimeter setting.
Circling not authorized east of Runway 1-19.

MISSED APPROACH: Climb to 2500 direct SLR VOR/DME and hold.

AWOS-3
118.35

FORT WORTH CENTER
132.025 360.75

UNICOM
123.075 (CTAF) 0



CATEGORY	A	B	C	D
CIRCLING	940-1 451 (500-1)	960-1 471 (500-1)	960-1½ 471 (500-1½)	NA
COX FIELD ALTIMETER SETTING MINIMUMS				
CIRCLING	1020-1 531 (600-1)	1040-1 551 (600-1)	1040-1½ 551 (600-1½)	NA

MIRL Rwy 1-19
REIL Rwy 1 and 19 **0**

SULPHUR SPRINGS, TEXAS
Amdt 6 10OCT96

33°10'N-95°37'W

SULPHUR SPRINGS MUNI (SLR)
VOR/DME-B

SC-2, 25 APR 2019 to 23 MAY 2019

SC-2, 25 APR 2019 to 23 MAY 2019

VOR/DME SLR 109.0 Chan 27	APP CRS 051°	Rwy Idg TDZE Apt Elev	N/A N/A 489
---	------------------------	-----------------------------	--------------------------

NEW

VOR-B
SULPHUR SPRINGS MUNI (SLR)

DME required.		MISSED APPROACH: Climb to 2500 direct SLR VOR/DME and hold.
Circling NA east of Rwy 1-19.		
AWOS-3 118.35	FORT WORTH CENTER 132.025 360.75	UNICOM 123.075 (CTAF) 0

